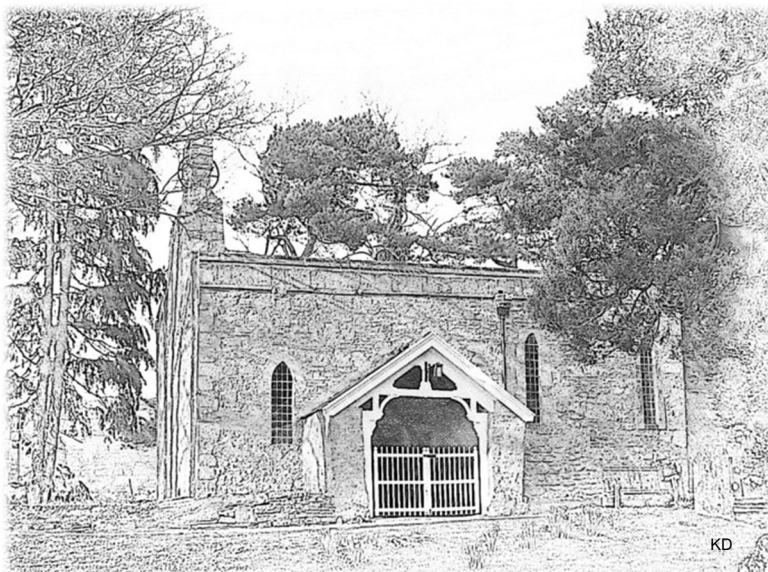


# THE UPPER WENSLEYDALE NEWSLETTER

Issue 286

May 2022

Donation please:  
50p suggested



*Redmire Church*

KD

Covering Upper Wensleydale from Wensley to Garsdale Head plus Walden  
and Bishopdale,  
Swaledale from Keld to Gunnerside plus Cowgill in Upper Dentdale.

## Guest Editorial

### Roads in Wensleydale

Roads have long been the essential means for bringing food and raw materials into the Dales.

When the Romans arrived in the Dales, they built a station in Bainbridge called Bracchium, later known as Brough Hill. From Bracchium, the soldiers built a road going west to what is now called Ingleton, and another one east to Catterick. After the Romans had left, the roads progressively fell into a disrepair.

Through the centuries, travel on drove roads and highways was often treacherous, with routes often taking the most direct line even though this took roads over hostile terrain. Livestock was herded south to larger towns for slaughter, and other produce including textiles was taken out of the Dales by packhorse and later by horse and cart.

The passing of the Turnpike Act in 1662 required tolls to be collected with the money raised used to improve the roads. In 1751, the Richmond to Lancaster turnpike was opened, running through Wensleydale to enable goods to be taken to the port at Lancaster.



Other turnpikes included one from Kirkby Stephen to Gayle (where there was a textile community) which opened in 1825.

Revenue for the turnpikes fluctuated, and so therefore did the quality of the roads. In the late 18th century, the road from Askrigg to Swaledale was described by a local as “fit only

for a goat to travel”, with the journey typically taking seven hours to travel 20 miles. As a result, some of the turnpikes were short-lived, with the Wensleydale turnpike closed by an Act of Parliament in 1868, and maintenance handed over to the local District Highway Board.

Nowadays, roads in the Dales are reasonably good, albeit narrow for modern cars that are wider than their predecessors and the growing volume of lorry traffic. The inevitable congestion at pinch points on the narrow lanes puts pressure on verges.

A further challenge is the emergence of off-road experience activities, whereby groups use 4x4s, quad bikes or motor-cross bikes on byways that were previously peacefully enjoyed by walkers.

In addition to the noise, such vehicle use causes rapid erosion of fragile ancient ways such as the Roman Road from Bainbridge, or the track from Heugh to Castle Bolton. The Yorkshire Dales National Park Authority are increasingly marking such bridleways as being not permitted access for such vehicles. Let’s hope this continues.

**Christine Hallas**

**Wensleydale Concert Series**  
Seven Live Concerts 2022

Piano & Deux

All concerts at St. Andrew's Church, Aysgarth at 7.30pm  
Details & Tickets: [www.wensleydaleconcertseries.co.uk](http://www.wensleydaleconcertseries.co.uk)  
Tickets: £15 adults, £1 under 18 & students

## Dales Quoits League

Always a time to consider summer must be on its way is when we organise the AGM of the Upper Wensleydale Quoits League. This was held at the Dalesman Club, Leyburn on the evening of March 21st with a good turnout from 15 teams. These have been allocated as 7 teams in Division 1 and 8 in Division 2 based on league finishing positions as of the 2019 pandemic season.

The first League games are to be played on **Monday, May 9th** starting at **7.00pm** and the season will run until **Monday, August 8th**.

Additional to the weekly games we will be holding the League Knock Out Cup where teams from Division 1 compete alongside those from Division 2. To equalise any possible disadvantage between Division 2 when playing Division 1 teams, the handicap system, first introduced in the 2019 season, will be adopted again to make it a more equal competition.

To make it a full season there are a number of other opportunities for players from all teams to participate in individual cup matches, details of which will be advised in a future post.

Although no new teams have joined the league there are a number of new players registered with various teams. Should anybody consider joining their local team please do not hesitate to contact Stephen Mason (League Chairman) on **01969 662743** for details.

**Stephen Mason**

### Submission of articles

Please note that all submissions should comply with current copyright legislation. If submitted articles are not the original work of the person submitting them, then all relevant permission should be sought and granted for reproduction.

**DEADLINE FOR COPY FOR THE  
NEXT ISSUE IS**

**TUESDAY MAY 24th  
(Unless we are full earlier)**

**PUBLISHED ON JUNE 1st**



### Eunice the Ewe

Last month I was hiding in the photo of the dog in the Home Run advert on page 32 and the lucky winner of the £10 prize is Paul Hartley of Dent.

Where am I this month? To enter for the £10 prize, please include your postal address if replying by email.

## Applegarth Couture

[www.applegarthcouture.co.uk](http://www.applegarthcouture.co.uk)

Made to measure.

Wedding, evening and daywear,  
tailoring and alterations.

**Contact: Rebecca Atkinson,  
Aysgarth**

**01969 629398 or 07521 030870**

**The accuracy, appropriateness or legitimacy of any product or service advertised in this publication is the sole responsibility of the advertiser and not of the Upper Wensleydale Newsletter.**

### In This Issue

### Page

Guest Editorial	2
Competition	4
Heavens Above	7
Living It Up at Sycamore Hall	8
Upper Wensleydale Benefice Services	10
Hawes Library	15
What's Ons	20
The Norah Worth Collection	20
DCM News	22
Penhill Benefice Services	24
Hawes in Bloom	25
Prunings	27
Mystery Picture	29
Swaledale festival	30
Wensleydale Concert Series	32
Blueboxt Update	35

## April Competition Answers

1. Blea Moor
2. Gearstones
3. Grisedale
4. Widdale
5. Great Knoutberry
6. Chapel le Dale
7. Ribblehead
8. Selside
9. Ingleton Falls
10. Dent
11. Whernside
12. Oughtershaw

Another tricky quiz where nobody managed to get all the answers correct by the closing date. As a result the prize money will rollover again to next month

### Happy Birthday

Happy 60th Birthday Susan

– its time to put your feet up and enjoy retirement in your own cottage in Redmire.

Your dream has come true and the long wait is over.

Enjoy the stress free life.

Love Janet and Julia.

### Drop-off points and contacts

For news, articles, reports, letters, What's On dates, competition entries, suggestions and comments:- All 01969 numbers.

<b>Hawes:</b>	Community Office	667400
<b>Gayle:</b>	Sarah Champion 23, Little Ings	667006
<b>Bainbridge:</b>	Sylvia Crookes, 3, Bainside	650525
<b>Askrigg:</b>	Sykes Shop,	650535
<b>Carperby:</b>	Anthony Abraham Hall Garth	663243
<b>West Burton:</b>	Nadine Bell, Margarets Cottage	663559
<b>Aysgarth:</b>	Hamilton's Tearoom	663423
<b>Redmire:</b>	Kevin Davis Westholme	624165
<b>Thoraby:</b>	Neil Piper	663747
<b>West Witton</b>	Christine Barker, Chestnut Garth	624934

## May Competition

### Fictional Addresses

You won't find these places on Google Street View (although you may find them on Google!). Which characters live at these fictional addresses?

1. Which pair live at 62 West Wallaby Street, Wigan?
2. Which family lived at 368 Nelson Mandela House, Peckham, London?
3. Who lived in Apartment 203 at 56B Whitehaven Mansions, Sandhurst Square, London?
4. Who lives at 124 Conch Street, Bikini Bottoms?
5. Which family lives at 342 Gravelpit terrace?
6. Who lived in Pemberley, Derbyshire?
7. Which family lives at 742 Evergreen Terrace, Springfield, USA?
8. Which hero's London address is The Postbox, Outside 221C Baker Street?
9. Who lives at Bag End, Bagshot Row in The Shire?
10. Who lived at the address 4 Privet Drive, Little Whinging, Surrey?
11. Which animal would be found living at 32 Windsor Gardens, London?
12. Who did the east wind blow to 17 Cherry Tree Lane, London?
13. Who lived at 100 Aker Wood West?
14. Who lived in Danemead Cottage, Old Pasture Lane, St Mary Mead, Downshire?

Please send in your answers to arrive by **Tuesday, May 24th**. Don't forget to nominate your charity which will receive the double rollover £60 prize should you win.



L I S A  
H A R D I

Reflexology

Reiki

The Old Beet House

Askrigg

lisa.hardi@gmail.com

**07791 521310**

## Newsletter Seeks Assistance

The Newsletter is run by a small team of volunteers from up and down Wensleydale. Additional help is sought from individuals, particularly those with a financial background, who would be interested in joining this team and, for a few hours per month, helping us to maintain and develop the Newsletter further.

Contact **Barry** on **01969 667458** for more information.

## Little White Bus Day Trips

The trip in May will take place on **Friday, May 13th** and we will be going to Kendal. Check the posters or call in to the Community Office for more details of this and up and coming trips.

Look forward to seeing regulars and new faces as well!

**Richard - Your Driver**



**We're recruiting!**

### NEW PAY RATES & BENEFITS

Part-time and full-time positions

**Front of House Catering**

**Water Treatment Operative**

**Production Operatives**

**Warehouse Operative**

**NPD Technologist**

Find out more at

[wensleydale.co.uk/work-with-us](http://wensleydale.co.uk/work-with-us)

## The Queen's Platinum Jubilee - Exhibition Celebrating Hawes

As part of the Jubilee celebrations for the town, St Margaret's Church in Hawes will be hosting an exhibition celebrating the variety and richness of the community of Hawes across the last 70 years; its people, its businesses, its farms, its way of life. There will be over 20 businesses and organisations exhibiting information and pictures of how Hawes has changed over the last 70 years.

The exhibition will open the week beginning **May 23rd** and refreshments will be available in St Margaret's throughout the Jubilee weekend.

## MICHAEL MOORE & SON BUILDER AND PLASTERER Family Business Est 1906

Alterations, pointing, stonework,  
Roof work, garden patios, paths,  
plastering, insulated plaster  
boarding,

Over-skimming Artex walls and  
ceilings, tiling walls and floors,  
underfloor heating, PVC sash  
windows.

**NO VAT TO PAY**

**Tel: 01969 667045**

**Mob: 07968 684942**

**Hawes DL8 3NS**



### Mike Addison Optician

Market Street, Kirkby Stephen,

**017683 71555**

Email : [infoks@mikeaddisonoptician.com](mailto:infoks@mikeaddisonoptician.com)

- Providing eye care for all the family
- Private & NHS patients welcome
- Children & over 60's receive free eye examinations
- Supplier of all spectacle & vision related products

or **The Shire Hall, Appleby, 017683 53199**

Mike Addison FRCO C.  
**OPTICIAN**

## H & M CRAFTSMEN KITCHENS | BEDROOMS | STUDIES



Showroom open to browse

**Mon-Fri 9am-5pm; Sat 10am-1pm**

Industrial Estate | Ingleton | LA6 3NU

015242 41535

[kitchensandbedrooms.co.uk](http://kitchensandbedrooms.co.uk)

## Leyburn Arts & Community Centre

Leyburn Arts and Community Centre invite the Community to join in their Platinum Jubilee Festival of Performing Arts to be held over the weekend prior to the main national celebrations. Free events and bacon butties and afternoon tea will be available to mark the occasion and celebrate the Queen's Jubilee.

Beginning on **Friday, May 27th** with a special screening of 'The Queen', starring Helen Mirren in one of her most famous roles, Saturday's events include dancing, ukulele, LADS (Leyburn Amateur Dramatics Society) performing one of their popular mini dramas, all supported by Blueboxt young talented musicians and in the afternoon, a concert by Leyburn Band.

**Sunday, May 29th** also includes the Community Pop Choir, the Platinum Tree planting and the awarding of prizes to the winners of the young people's Art Competition. Full details and a programme will be available on the website and a special flyer. This is a subsidised weekend of free activities supported by Richmondshire District Council, Leyburn Town Council and Leyburn Arts and Community Centre.

Amongst the other events for the month organised by Leyburn Arts and Community Centre include a Dance Celidh, on **Wednesday, May 18th, at 7.00pm** entitled Six Feet, Three Shoes, which is described as a perfect fusion of fun, rhythm, emotion and magic. Please note this is being held at Wensleydale Rugby Club. Tel **01969 624510** to book, tickets £8 adults, £4 for young people.

Also, another Live Cinema Event on **Sunday, May 8th at 4.00pm** - Northern Ballet perform the ballet Merlin, a sweeping epic adventure of heartbreak, hope and magic. Filmed Live at Leeds Grand Theatre. Tickets £12.

## Wensleydale Tournament of Song 2022

To everyone who helped to bring about this year's Tournament.

We had a packed four days of entrants who were, as always, professional and entertaining. Our thanks go out to all those in the audience, whose support made it all worthwhile, and to the volunteers who kept things running smoothly, and who kept us topped up with tea and coffee; also a special thank you to Hewson's Newsagents, who continue to stock the syllabus and programmes each year.

Next year we will be back to full strength with a two-week programme of classes, and we look forward to seeing you all there.

dales **web** solutions  
bespoke web site design

**All aspects of Web site design.**

Visit: [www.daleswebsolutions.co.uk](http://www.daleswebsolutions.co.uk)

Email: [info@daleswebsolutions.co.uk](mailto:info@daleswebsolutions.co.uk)

Tel: **01969 666174** or **07931 822736**



*Hamilton's Tea Room  
At Yoredale House,*

*Aysgarth*

*Licensed Tea Room*

*HOMEMADE FOOD,*

*Light Lunches, Clotted Cream Teas*

*Open Feb-Nov, 10.30am - 4.30pm*

*Closed Tuesdays*

*Tel: 01969 663423*

## Portable Appliance Testing (PAT)

Hawes DL8 3NT

**Certificates & Reports supplied on  
each appliance tested.**

**Please call for free quote and advice**

**Wayne Webster 01969 666020  
or 07766 640905**

ANDREW  
**HAWKINS** BUILDING  
CONSTRUCTION CONTRACTORS

NEW BUILDS | EXTENSIONS  
BARN CONVERSIONS | ROOFING & GROUNDWORKS  
APPROVED DAMP PROOFING & REMEDIAL  
TREATMENT SPECIALISTS

**Tel: 0800 002 9779**

Email: [hawkinsbuilder@hotmail.com](mailto:hawkinsbuilder@hotmail.com)

Unit 5 Haraby Business Park, Haraby Road, Leyburn, North Yorkshire, DL8 5QA

## Heavens Above

There's a total eclipse of the Moon this month, on **May 16th**, but you'll need to be a proper night-owl to catch it as it doesn't get underway until just after **2.30am**.

Lunar eclipses are always a great spectacle no matter how many times you seen one. They occur when the Earth travels directly between the Sun and the Moon and the Earth's shadow passes over the Moon's surface. If the Sun, Earth and Moon lie in a dead straight line we get a total lunar eclipse as the Moon ends up in the darkest part of the shadow, the umbra. Depending on atmospheric conditions, the Moon can take on an eerie rusty-red tint or turn a deep coppery-purple. The more dust and dirt in the atmosphere, the redder the Moon becomes.

This month's eclipse lasts for more than five hours but we'll only see part of it from the

UK as the Moon will have set by the time it ends just before **8.00am**. If you haven't the inclination to watch the show right through you'll get the best view between **4.30am** and **5.00am** when the whole of the fully eclipsed Moon will still be visible low down in the south-west.

There is also the possibility of a spectacular meteor storm this month. On the night of **May 31st / June 1st** the Earth passes through a particularly dense stream of dust particles left behind by a comet Schwassman-Wachman-3 which broke up in 1995. With a bit of luck, we could be treated to display of hundreds of bright meteors shooting across the late evening and early morning sky. Meteor storms can be notoriously unpredictable but you never know, this one could turn out to be a really grand affair. So - here's hoping for clear skies!

Al Bireo

**Hearing loss shouldn't make  
you feel isolated and anxious,  
we are here to help.**



**For all your  
hearing needs!**

- Hearing test
- Free hearing aid trials
- Ear wax removal
- Tinnitus assessment and therapies
- Hearing aid repairs and servicing

 **Hear & Now**  
Independent Hearing & Tinnitus Specialists

**CALL 01765 278 744**

8 Queen Street, Ripon, North Yorkshire HG4 1ED  
info@hearandnowonline.co.uk  
www.hearandnowonline.co.uk

*Rhodes Pet & Wildlife Supplies*  
*The Neukin, Market Place, Hawes*

**07376 056998**

*www.rhodespetshop.co.uk*  
*rhodespetshop@outlook.com*

*Open 9.30am-5.00pm*

*Closed Wed and Sun*



  
**PARKIN & JACKSON**  
MONUMENTAL SCULPTORS

**New Memorials; 2nd Inscriptions  
Cleaning and Repainting; Renovations  
Memorials designed to your specifications**

*Advice freely given*  
**Tel: 01539 722838**  
**14, Appleby Road, Kendal LA9 6ES**  
**email: info@parkinandjackson.co.uk**

## Snaizeholme Joinery

**Kitchen fitting and planning,  
Made to Measure Wardrobes,  
Stairs & Banister Rails,  
Internal & External Doors,  
Windows & Window Repairs,  
General Joinery Works  
Free Quotations**

Low House, Snaizeholme,  
Hawes.

**DL8 3NB 01969 666063**

## Living It Up at Sycamore Hall

Well, the last couple of months have been a bit of a challenge at Sycamore Hall with an outbreak of Covid affecting some of our residents and staff. Unfortunately, this meant we had to go into a local lockdown, but we are now **OPEN FOR BUSINESS AS USUAL!**

We are resuming our social activities with the weekly 'Knit & Natter' taking place every **Monday** afternoon from **2.00pm**, giving our ladies the opportunity to catch up with each other whilst doing something productive. Some have been knitting squares for blankets and others have been knitting teddy bears. One of our ladies suggested that these could be sent to help the children of Ukraine so we hope to have a nice collection of teddies to send in that direction shortly.

Residents have also been very generous in joining others in donating goods and cash to the local appeal for Ukrainian refugees. A staggering amount of money was donated in the local community, allowing medical and hygiene supplies to be purchased and sent over, along with donations of other vital goods. It is so reassuring to know that in an emergency, the people of the Upper Dales come forth to put others first and do their bit to help those in need.

The weekly Coffee Mornings take place on **Thursdays** from **10.30am** and everyone is welcome to come and join us for tea and biscuits and a good old chat.

Meanwhile, Brian has been busy with his quiz or bingo sessions which take place on Tuesday mornings and are enjoyed by a good number of our residents. Competition is fierce and there are one or two regular quiz winners who everyone is trying to beat!! Of course, it is all good fun and a nice opportunity to get together over some light refreshment.

Easter Monday saw another Vintage Afternoon Tea organised by Karen and Sonja who transformed our lounge into a very chic Tea Room for the afternoon. Guests were escorted to their table by our maitre'd, Terry, and a team of hard-working volunteers served a delicious afternoon tea on vintage crockery. The eating and drinking was interspersed with an Easter Quiz and a few little Easter Bunnies turned up to distribute Easter gifts to the guests. Once again, our accomplished local musician, Diana Hartley, performed on the piano - just as you would

expect in all the best Afternoon Tea venues! A big 'Thank You' to everyone who helped make this such a good afternoon.



Our local facilities are open for business - Sykes Village Store (**Monday - Saturday, 9.00am to 1.00pm**), Sonja's Hair Salon (**Thursday - Saturday** by appointment), the Outreach Post Office (**Monday and Wednesday, 9.00am to 11.00am**) and Sycamore Restaurant (**Daily 10.30am - 1.00pm**) - and we hope that you will come to visit us and support these local services.

Don't forget that we also have facilities that you can hire for meetings or events, including our residents lounge. Contact **Nicky Cooper** for more information (Tel: **0370-192-4055**). All money raised from the hire of our facilities is ploughed back to offset the costs to residents.

We are now looking forward to better weather when we can get outside a bit more. Brian is already planting up for the main growing season and we hope to be able to celebrate the Platinum Jubilee outside in June - fingers crossed!

We look forward to seeing you soon!



### Stone House Hotel

Relax and unwind in our classic country house overlooking Wensleydale  
Open daily for :  
Morning Coffee and Afternoon Tea  
Light Lunch: noon -2.00pm  
Dinner: 6.30-8.30pm

**Perfect for** Special occasions. Small meetings.  
Family gatherings... Quiet escapes!  
**Take a fresh look at Stone House Hotel**  
Sedbusk, Hawes, North Yorkshire DL8 3PT  
Please call to book  
**Tel: 01969 667571**  
<https://stonehousehotel.co.uk>





## Yorebridge Sport and Leisure Centre

The Wensleydale Centre, Askrigg.  
Tel. 01969 650060

### Do you want to play tennis this summer?

Our tennis courts are available to all! Come and play on our newly refurbished tennis courts.

Join as an individual for £50 or a family for £70 and use the courts as often as you like during 2022. Daily rates are also available - £4 for an adult and £2 for a child. Visit our website [www.yorebridgesportandleisure.co.uk/membership](http://www.yorebridgesportandleisure.co.uk/membership) where you can get a membership and pay online. Alternatively, please contact us for more information.

The courts are also available to hire for other sports - get in touch if you would like to use them.

Remember we have a fully equipped gym with brand new equipment. There are a number of different gym membership packages to suit your needs.

We are pleased to now also be able to offer Soft Play sessions again which are starting very soon, thanks to funding from North Yorkshire County Council. Please get in touch for more details.

We also have a number of fitness classes on offer - via zoom or live class as indicated:

**Fit for Life - Mondays (zoom) 9.15am - 10.15am.** Building and Maintaining Strength.

**Bootcamp - Tuesdays and Thursdays (live) 6.00am - 7.00am.** High Intensity exercise to build strength and give a good workout to counteract a more sedentary lifestyle or work role.

**Walking Circuit - Wednesdays (zoom) 9.15am - 10.15am.** Exercises to keep active people, active.

**Strong and Steady - Wednesdays (live) 11.00am - noon.** This is geared towards those who have had a fall or are worried about their balance and ability to get out and about. Exercises are based on building strength, stability and mobility to manage everyday life and get back out to social activities. Mostly chair based exercise.

**Bums and Tums 6.50pm - 7.35pm** and Step class **7.40pm - 8.25pm - Thursdays (live).**

Work out to your own level. Come along and improve your fitness. (cost £5 one class or £8 two classes).

**Strong and Able - Fridays (live) 11.00am.** Exercises to help to maintain your ability to get out and enjoy life, build muscle tone, stability around movement and keep flexible and mobile around joints. Standing and chair based exercise.

Costs for fitness classes are £6 per session.

We are also offering:

**Conversational French - Tuesdays 1.30pm - 2.45pm (zoom).** Cost is £5 per session.

Contact us on **01969 650060** or [admin@yorebridge-sport.co.uk](mailto:admin@yorebridge-sport.co.uk) or visit our website [www.yorebridgesportandleisure.com](http://www.yorebridgesportandleisure.com).

## Wensleydale Bridge Club

Meets every Wednesday at 6.45pm

At Wensley Village Hall

Phone **01969 663243** for info

## EFFICIENT HEAT

OIL BOILERS SERVICED  
AND REPAIRED

Contact Nick  
07729 105466 / 01969 667847

## Solid Joinery Solutions

All aspects of joinery and carpentry undertaken.  
Bespoke joinery solutions made to your requirements.

Covering all Yorkshire Dales and surrounding areas  
Contact Paul for a free, no obligation quote  
Mobile: **07980 167987** Landline: **01969 667949**

Email: [enquiries@solidjoinerysolutions.co.uk](mailto:enquiries@solidjoinerysolutions.co.uk)  
Web: [www.solidjoinerysolutions.co.uk](http://www.solidjoinerysolutions.co.uk)



## Upper Wensleydale Benefice Services in May

	<b>St Mary &amp; St John's, Hardraw 9.00am</b>	<b>St Margaret's, Hawes 10.30am</b>	<b>St Oswald's, Askrigg 10.30am</b>	<b>St Matthew's, Stalling Busk 2.30pm</b>
<b>May 1st</b>		<b>The Gathering:</b> Benefice Family Holy Communion		
<b>May 8th</b>	Morning Prayer	Ecumenical Service	Holy Communion	Holy Communion
<b>May 15th</b>	Holy Communion	<b>Family Service</b>	Morning Prayer	
<b>May 22nd</b>	Morning Prayer	Holy Communion	<b>Café Style Outreach</b>	<b>Pathfinders:</b> Young people aged 10+ Activity Friendship Discovery
<b>May 29th</b>	Morning Prayer	Morning Prayer	Morning Prayer	
Evening Prayer is on <b>Sundays at 4.00pm</b> via our telephone conferencing service - for details go to <a href="http://www.upperwensleydalechurch.org/services">www.upperwensleydalechurch.org/services</a> .				

### Something New

As a first-year undergraduate, I joined the Bretton Hall Morris Men and had a great time learning how to tap dance with 6 other men on a table top. Not a silk handkerchief in sight, we focussed on clattering each other with wooden staffs and swords. It was in May that we ventured out of the rehearsal studio and volunteered to perform for a local Mayday parade. We soon discovered that a Mayday parade in South Yorkshire was a very different experience from the pastoral scene we had imagined! Sandwiched between Arthur Scargill's National Union of Mineworkers and the local Anti-Nazi League, we felt a little out of place but did our best to bring something new to the thousands of folks lined up along the roadside.

I love the way that springtime always heralds the promise of something new. After two years of having to react to circumstances dictated to us, the church in the upper dale is beginning a new structure to its services and events to try and offer something for everyone across the benefice. On the first Sunday of the month 'The Gathering' will create an opportunity for the

four churches to join in worship and teaching together in a new way. Our flagship family event is moving from Askrigg to Hawes creating the possibility for new people to engage with its mixture of worship, activity and fun. The recent turbulent events of pandemic, economic hardship and war in Europe has created an environment where many are chatting about the BIG questions in life more openly. The Café style event on the 4th Sunday is designed to encourage and enable discussion around such topical issues and to investigate what the Bible has to say about them, whilst our new Pathfinder event for our older children seeks to provide a similar opportunity through a mixture of activity, friendship and discovery. Traditional services of Communion and Morning and Evening Prayer will continue as usual both in the buildings and by telephone. It is our hope that this new structure will provide the opportunity to enjoy God, to continue to grow in our relationship with him and to enable those who are exploring faith to discover that joy for themselves. It would be lovely to welcome you to there.

*Rev Dave*

## Middleham and the Dales Local History Group

‘Timothy Hutton of Clifton Castle and Marske-in-Swaledale’ by Jane Hatcher

Middleham Key Centre on  
Tuesday, May 17th at 2.00pm

Country squire and agricultural improver, businessman and banker, man of taste and benevolence, developer of a country estate, Timothy Hutton was all of these and more. But not the least of his achievements were the near-daily entries kept in his diaries for over 50 years.

By trawling through thousands of diary entries, we can see through one man's eyes how life was lived in the first part of the 19th century. It is a rare opportunity to understand the rural economy, social and leisure activities, personal relationships and social behaviour - the basic aspects of Yorkshire and Timothy Hutton's world.

Jane Hatcher was born and educated in York. She has a BA(Hons) in Architectural Studies, and a MPhil in architectural history research. Her career in architectural history has included conservation, research, writing, editing and lecturing. She was a Fieldworker for the Re-Survey of Listed Buildings, and served as a member appointed by the Secretary of State on the Yorkshire Dales National Park Committee. For many years she has lived in Richmond, North Yorkshire. In recent years she has widened her work as an architectural historian to encompass local and biographical history.

Annual membership of Middleham and the Dales Local History Group is still only £10, visitors are welcome at £3 per meeting. For more information please contact Tony Keates 01969 640436, [dotandtonyk@btinternet.com](mailto:dotandtonyk@btinternet.com).

## Alex Kravchenko

BSc (Hons) MChS

### Chiropodist / Podiatrist

Member of the Health Professions Council

Practising at

Yorkshire Foot Clinics

25, Frenchgate, Richmond DL10 4NZ  
Bishop Auckland/ Hawes 667449

Clinic Tel 01748 850020

Email: [yorkshirefootclinics@yahoo.com](mailto:yorkshirefootclinics@yahoo.com)

## Handy Man John

### Dales View

Painting and decorating, General repairs,

Locks changed and fitted,

Flat pack assembly, shelving,

broken down window units replaced,

Shed repairs, lawn cutting, pruning,  
fence repairs,

Carpet cleaning, Jet washing, etc etc

For a reliable and great service

Call John on 01969 650416 or Mob 07989383205

## WENSLEYDALE TREE and HORTICULTURAL SERVICES (Est. 1995) DAVID ALLEN (HND Arboriculture)

Fully insured (£5million) professional tree work:  
felling, crown thinning etc.

Petrol log splitter and woodchipper for hire.

Tree stump removal.

Hedge establishment and maintenance.

Supply/ planting of forest/ ornamental trees.

Fruit tree maintenance. Weed control services.

[treesinhawes@gmail.com](mailto:treesinhawes@gmail.com)

01969 667364 or 07811 576108

## McGARRY & Co. Solicitors

From small personal  
matters to larger  
commercial transactions,  
for personal advice in an  
impersonal world.

Market Place, Hawes,  
North Yorkshire DL8 3QS  
Telephone No 01969 666290  
or email

[office@mbmcgarry.co.uk](mailto:office@mbmcgarry.co.uk)

Farm and Home visits by  
appointment

Regulated by The Solicitors Regulation Authority  
No. 553987

## Sedbergh Golf Club News

It is not so long ago that Sedbergh was part of the West Riding of Yorkshire which possibly reinforces the point that it may be “over the hill” but that it's not so very “far away”. A number of Wensleydale residents play their golf at the picturesque Sedbergh Golf Club. Indeed, as the season proper got going, a Hawes resident, Alan Moore, won the first trophy competition of 2022, the Robert Haygarth Trophy.

For those who prefer a relaxed stroll rather than the cut and thrust of friendly competition, the Club is developing a group who meet on a Wednesday morning. “Warriors not worriers”, according to one of its members. The objective is to accommodate those members who do not want to play 18 holes of golf but enjoy playing a shorter round and getting together with friends new and old with the flexibility to simply turn up at **9.30am** and be sure others are on hand to partner you or make up a four.

This Wednesday group also seeks to provide encouragement and guidance to those who may be new to the fun and frustrations of golf. As part of this commitment to inclusivity, the Club is holding an open evening. This will take place on **Thursday, May 12th at 6.30pm**, when we hope anyone who may be interested in playing the game will come down to the club and talk to some of the members, hit a few balls on the practice ground and maybe even play a hole or two. There will be no cost to the evening's golfing activities. Balls and clubs will be provided and coaching will be available for the inexperienced.

For further details call **Steve Gardner on 015396 21551** or **Adrian Braddon 0330 113 8850**.

*Platinum Jubilee Celebrations*

# COMEDY NIGHT

**THURSDAY 2ND JUNE 2022**  
**THE FOUNTAIN HOTEL**  
**Hawes**

Doors 7.30pm  
Start 8pm

**FEATURING**



Jamie Sutherland



Nina Gilligan



Danny Posthill  
*Britain's Got Talent finalist*

**Ticket: £15.00**  
available from  
The Fountain Hotel, The Alchemist's Cottage  
or Forever Growing Children's Clothing

**CHARITY RAFFLE**



## LIBERTY

FABRIC

Quality fabrics for quilting, dressmaking, etc., sewing kits & accessories, plus wool/yarn.

**Abbotstone House Collection**  
**Little Shop on the Hill, Hawes**  
**07921 058803 or 01969 667988**

## Dales Garage

Services we provide

Exhaust, Diagnostics, Brakes, Welding, MOT, Suspension, Timing Belts, Clutches, Batteries, Tyres, Services. All makes and models.

Unit 2, Hawes Ind Estate, Brunt Acres Road  
Hawes DL8 3UZ

[www.facebook.com/dalesgarage1](https://www.facebook.com/dalesgarage1)

**Call – James 07399 513605**  
**Tyler 07376 487776**





## HAIR, NAILS AND AESTHETICS

Aqua Facial  
Micro Needling Facial  
Scalp Micropigmentation  
IPL Laser Treatment  
Thread Vein Removal  
Skin Tag Removal  
Brow Microblading and Ombre

**Tel Hawes 01969 667449**  
**info@twistedah.com**

## News From Gayle Mill

Gayle Mill is open to the public again with tours four days a week throughout the spring and summer.

The Mill will be open on **Thursdays, Fridays, Saturdays and Sundays**, with tours at **10.00am, 11.00am, noon, 1.00pm, 2.00pm and 3.00pm**. The tours cost £5 per adult. "All others are free as we wish to support the educational aspirations of young people," said the manager, Stuart Parsons.

He added that they would be delighted to welcome more volunteers. He said: "We need people who will be happy to operate as tour guides, help with day-to-day maintenance and a programme of long-term maintenance."

For the tours which took place on April 9th and 10th Stuart was joined by new volunteer, Sarah Dashwood.



## WOODCRAFT STUDIO & TIMBER SERVICES

formally Gayle Mill Trust

Gates, posts and fencing to suit all your needs.  
Timber sales of larch and local hardwoods cut and delivered for your own project.

Mobile sawmill to cut your own trees into planks or beams.

Seasoned firewood delivered in dumpy bags and trailer loads throughout the dales.

Ring **01969 667320** or **07967 844636** for further details



## Hall & Birtles -SOLICITORS-



For all your legal requirements offering a full range of services.  
Hawes DL8 3QL, Tel 667171  
email; [hawes@hallandbirtles.co.uk](mailto:hawes@hallandbirtles.co.uk)  
and at Leyburn, Golden Lion Yard, DL8 5AS, Tel 01969 625526.  
email: [Stuart@hallandbirtles.co.uk](mailto:Stuart@hallandbirtles.co.uk)

Regulated and authorised by the Solicitors Regulation Authority

## D BUSHBY Joiner/Cabinet Maker

Doors, windows, staircases etc.  
made to measure.

Skirtings, doors, shelves fitted and many more odd jobs.

For a prompt and efficient service ring

**David Bushby: 01969 666048 or 07980 201579**

## DALE HEAD GARAGE

Turfy Hill, Hawes

Tel.01969 667483

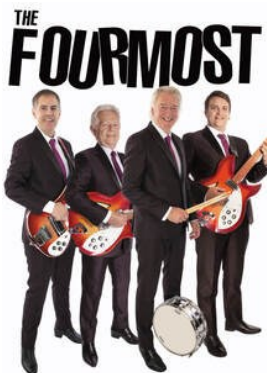
Stocking a wide range of eco cleaning products plus

A REFILLING STATION

Bring your empty bottles and fill again.  
Reduce plastic waste and save money!

## Events in Reeth Memorial Hall

**Friday, May 20th – The Fourmost** – an evening of 60s favourites including their own Top 20 hits (A Little Loving; Hello, Little Girl and I'm In Love). Tickets £15 (£17 door).



**Friday, June 17th – Harp and a Monkey** – Martin Purdy (vocals, glockenspiel, accordion, harmonica and keyboards), Simon Jones (harp, guitar, viola) and Andy Smith (banjo, guitar, melodica and programming). Expect songs of bare-knuckle boxers, evolutionary moths and wife auctions. Tickets £14 (£16 door).

**Friday, June 24th – Tony McManus** (described by John Renbourn as “the best Celtic guitarist in the world”) joins Julia Toasperm

from Berlin (fiddle, guitar, vocals). Tickets £14 (£16 door).

**Saturday, July 2nd – Darren Page** – the Voice of Roy Orbison. One set of Rock ‘n’ Roll favourites and one set of ‘The Big O’. Tickets £13 (£15 door).

**Friday, July 22nd – Michael Messer’s Mitra** are British blues innovator and slide guitarist, Michael Messer, Hindustani slide guitar maestro from India, Manish Pingle, and London-based tabla master, Gurdain Singh Rayatt. Tickets £17 (£19 door).

Tickets are available from Reeth PO or phone John Little **01748 884759** or visit [www.reethmemorialhall.co.uk](http://www.reethmemorialhall.co.uk) – tickets half price for under 16s. All concerts start at **8.00pm**. We continue to follow current Government Covid guidelines.

**Pennine Outdoor Fabrics Ltd**

www.pennineoutdoor.co.uk  
sales@pennineoutdoor.co.uk 015242 63377

The advertisement features a background of various outdoor fabrics in shades of blue, red, and white. A pair of red scissors is positioned over a piece of fabric. A small logo in the top right corner shows a mountain range and the text 'pennine outdoor fabrics'.

### Tuesday Hawes Fish Market

Also door to door delivery every **Friday**. Pre-order or just turn up on a **Friday** at

Askrigg Stone Cross. **9.30am to 10.45am**  
Bainbridge playground. **11.00am to 11.30am**  
West Burton **12noon to 12.30pm**  
Thornton Rust W.I. Hall **12.45pm to 1.00pm**  
Mobile **07711 989590**  
Facebook Hawesfishmarket;  
Email Hawesfishmarket@gmail.com

### FOR ALL YOUR SEWING NEEDS

Contact. Sheila Kearton at  
Woodhall, Askrigg

Alterations and custom soft furnishings  
CURTAINS, ROMAN  
BLINDS, CUSHIONS  
DRESSMAKING AND  
REPAIRS



Tel **01969 663484** or **07800 576925**

## O'REILLY Chartered Accountants

At O'Reilly's we provide a broad range of accountancy and taxation services to our clients.

Our friendly and approachable team are dedicated to delivering a high standard of service throughout the year.

We act for many individuals and businesses with different levels of complexities.

For more information visit our website at [www.o-reilly.co.uk](http://www.o-reilly.co.uk) or contact us on **01969 667428** to arrange a free initial consultation.

## What Can We Do In a Library?

In today's financial climate it's reassuring to know that most of the services offered in a library are still absolutely free and it is one of the few places we can go without the expectation of having to spend any money.

Here at Hawes Library, we have a great Junior Area where children can read, colour, draw and play. Under 5's can join the Busy Bee scheme to collect stickers and earn certificates, and 5 years to 11 year olds can take part in the annual Summer Reading Challenge. Avid bookworms of any age can borrow fiction and non-fiction books, audio books and e-books. If you're not very mobile we can deliver books and audios to your door with our Home Library Service too.

With your library account you can access all of the online resources available to North Yorkshire Libraries: "Borrowbox" for e-books and e-audio, "Libby" for e-magazines and comics, "U-Library" for e-audios and "Pressreader" for e-newspapers and magazines. Other digital resources include dictionaries and encyclopaedias, ancestry resources, Theory Driving Test Pro, Citizenship Test resources and much more.

"But what if I don't have the internet?" If you cannot access broadband at home, we have various subscriptions for you to access the computers in any North Yorkshire library, the best value one being unlimited computer access for 12 months for just £35. Each library member already gets one-hour FREE ACCESS every day. If you don't have a printer at home, we also

have the facility to print.

The world is increasingly reliant on digital service and we understand that not everyone has a computer, much less knows how to use one. If you'd like to learn a little bit about them, we're more than happy to show you what to do. Or if you can use them a little but need some help with a particular website, or accessing a particular resource, we're more than happy to help – no need to be shy, we all need to learn somewhere!

Want to learn more? Come and speak with staff, we are more than happy to offer advice and guidance. Have a skill to share? We're more than happy to provide space for you to run a book club, bring your children or playgroup to a safe space, show a group how to delve into their ancestry.... anything is possible, and it's all FREE!

Hawes Library Team

## WHITE ROSE HOTEL



Askrigg  
01969 650515

FRESH LOCAL  
PRODUCE COOKED TO ORDER

Real ales, friendly atmosphere  
Lunches noon - 2.00pm  
Dinner 6.00pm - 9.00pm

Sunday carvery,  
noon to 2.00pm

**nh flooring**  
Carpets • Laminates • Vinyls • LVT  
Solid & Engineered Wood • Accessories

### For All Of Your Flooring Needs!

NH Flooring in Richmond can fit quality flooring to any Houses, Apartments, Offices, Holiday Lets, Hotels, Pubs, Vans and anywhere else you want it.

We offer a complete flooring service including:

- Supplying, Fitting, Screeding & Levelling,
- Repairing, Uplift & Removals, Trimming,
- Edge Whipping, Cladding and much more.

**NH Flooring - Richmond**

[www.nhflooring.co.uk](http://www.nhflooring.co.uk) 01748 822834  
Unit 6 Borough Court, Borough Road, Richmond. DL10 4SX

### Better Health Massage

Mobile Therapist, 8am to 8pm, 7days  
Improve overall general well being, inside and out.

**Ruth Boddy** MFHT, ITEC Dip. Massage

[ruth@betterhealthmassage.co.uk](mailto:ruth@betterhealthmassage.co.uk)

Fully qualified and insured

07773 781803



[www.betterhealthmassage.co.uk](http://www.betterhealthmassage.co.uk)



## Little White Bus Fare Increases

On **Tuesday, May 3rd**, and for the first time since 2015, all Little White Bus fares will be increased by an average of 5%. This is in line with the increase that North Yorkshire County Council services increased by at the beginning of April.

### Correction

'Best Foot Forward' would like to apologise for a mistake in last issue's article. The river below Cautley Spout is, of course, the Rawthey, not the Lune. Well done to all those of you who spotted this geographical error.

## Queen's Jubilee Celebrations

There will be a "street party" on **Saturday, June 4th** starting at **2.00pm**, in the Pennygarth car park, Hawes. Music by Alison Wade, a quiz, and face painting!

Sandwiches will be provided but please bring a cake and your own cup and saucer! If you can also bring a chair that would be great! If anyone has a garden gazebo we could use it would be much appreciated.

Please contact me, **Jill McMullon**  
**07875344054** or **Brenda Peacock**  
**07519338676**. All are welcome.



## Seasoned Firewood Logs For Sale

Hardwood and Softwood available. Bulk Bags, Bulk Loads and smaller bags available, also kindling bags. Can deliver locally – Hawes Area

**01969 667916** after 5.00pm  
**Mobile: 07974 507825**  
 any time; P.O.A



- \* **Carpet Cleaning**
- \* **Upholstery Cleaning**
- \* **Hard Floor Restoration**
- \* **Mattress Cleaning**
- \* **Rug Cleaning**

**Tel: 01969 622620**  
**Mob: 07944 774947**

[www.ecodrycarpetcare.co.uk](http://www.ecodrycarpetcare.co.uk)

## YOREBRIDGE HOUSE



Nestled in the heart of Wensleydale, Yorebridge House offers a combination of luxury services including overnight stays in our beautiful hot tub rooms or house rooms, fine dining in our 3 rosette restaurant, light bites, afternoon teas, weddings and private functions.

With a welcoming roaring fire and beautiful views across the dales, you can sit back and relax the moment you step through our doors.

We are open seven days a week  
 Light bites served between 12noon - 3pm  
 Dinner is served between 6.30pm - 8.30pm  
 Sunday lunch available 12noon - 2pm

Please contact us using the details below to make a reservation.

[www.yorebridgehouse.co.uk](http://www.yorebridgehouse.co.uk)  
 enquiries@yorebridgehouse.com  
**01969 652060**

## JT ATKINSON

### BUILDERS MERCHANT

### HAWES BRANCH

BRUNT ACRES TRADING ESTATE | NORTH YORKSHIRE | DL8 3UZ  
 TEL: 01969 667413 | EMAIL: [HAWES@JTATKINSON.CO.UK](mailto:HAWES@JTATKINSON.CO.UK)

**BUILDING MATERIALS**

**LANDSCAPING**

**TIMBER & JOINERY**

**ROOFING**

**PLUMBING & HEATING**

**DRAINAGE**

**PAINT MIXING SERVICE**

## TRADE & PUBLIC WELCOME

**WE'RE OPEN WHEN YOU NEED US**  
 MONDAY-FRIDAY 7:30AM-5:00PM | SATURDAY 8:00AM-12:00PM



See our range online: [www.jtatkinson.co.uk](http://www.jtatkinson.co.uk)  
 Join us on social media  
 @JTAMarketing @JTATkinsonBM





## Leyburn u3a Group

The next meeting of Leyburn u3a is its AGM to be held on **Friday, May 21st at 10.00am for 10.30am** start, at the Arts & Community Centre, Leyburn.

Meetings are usually held on the third Friday of every month. Future Meetings: **June 17th** - The Nidderdale Moorland Group; **July 15th** William Wilberforce - A talk by his ancestor Mary Wilberforce.

## Penhill Ladies

**May 18th at 7.30pm** at Carperby Institute  
'Seasonal Singers'

This is an open meeting so guests are very welcome. There is a cover charge of £5 for non members which includes refreshments. Please ring **Ann** on **01969 662625** for more details.



## Visitor Centre Open Daily

### Cheese Shop

Cheese sampling is back!

### Cheese Experience

New daily cheesemaking demonstrations timetable

### Calvert's Restaurant

New Spring & Sunday lunch menu

### 1897 Coffee Shop

New unique cheese themed menus

[wensleydale.co.uk](http://wensleydale.co.uk)

**T: 01969 667664**

## JOHN & TED DINSDALE

Builders ~ Roofers ~ Renovations ~ Extensions

*All aspects of property maintenance.*

*Fireplaces, Wood Burners supplied and fitted*

**01969 667 718 ~ 07511 424 865**

## MOORCOCK INN



Traditional Ales  
Good Home Made Food  
served all day until 8.00pm  
Accommodation

Contact Jo Cox

[Moorcockinn@outlook.com](mailto:Moorcockinn@outlook.com)

**01969 667488**



## J. Parfitt Plumbing & Heating Ltd

All aspects of domestic/commercial plumbing and heating work undertaken

Phone: **01969 650665**

Mobile **07882 005261**

[www.parfittplumbing.co.uk](http://www.parfittplumbing.co.uk)

## CORN MILL TEAROOM



### BAINBRIDGE

Tel: **01969 650769/650212**

[www.cornmilltearoom.co.uk](http://www.cornmilltearoom.co.uk)

email: [james-peacock@btconnect.com](mailto:james-peacock@btconnect.com)

Family run Tearoom, open seasonally  
Breakfasts, Light Lunches, Afternoon Teas, Cakes,  
Pastries and Scones.  
Eat In or Take-Away

## MFW Aga & Boiler Services

Specialising in the servicing of Aga / Rayburn cookers and domestic oil boilers.

All Dales area covered

For service please contact Mike on:

Phone: **01609 779751** Mobile: **07731 349276**

## Friends of the Dales Countryside Museum

Photos and reports about the pantomimes in Hawes until 1997 are among the extensive trove of local history available in the Research Room at the Dales Countryside Museum in Hawes which is now open.



The pantomime archive is in the Norah Worth Collection – a remarkable set of scrapbooks that were donated by Norah to the Dales Countryside Museum (See page 20). These cover so much of the recent history of Hawes and surrounding villages including information relating to its clubs and societies, the Creamery and other businesses, the W.I., hotels and holidays plus “Life in the Dale 1848 to 1991”.

The Research Room was opened in 1994 to be a resource for people who want to research their local and family history. It is an inspiring place for anyone living in the area and well worth a visit.

It contains an extensive collection of church and chapel registers for most of Wensleydale some dating back to the 17th century, as well as information about local families, including the

records kept by the Garth family which farmed the land around Crackpot for several centuries and the Wensleydale Advertiser.

The MacFie Calvert Collection of books expands the Research Room’s resources to encompass Yorkshire including mining in Swaledale, the history of Yorkshire County Cricket Club until 1923, and the Journals of the Royal Agricultural Society from 1939 to 1983.

There is even a full collection of The Dalesman magazines from the 1940s, and a lot of information about Yorebridge Grammar School.

Dales Countryside Museum volunteers assist visitors in the Research Room when it is open on Mondays and Wednesdays providing access to the material held in store and helping with research.

### R and B CONSTRUCTION



Mr R T Parker

**Building and  
Roofing Contractors**

**Excavator and Operator Hire**

**Extensions to Fine Restorations**

**650151 or 07980 801026**

<https://randbconstructionltd.co.uk>

### BLADESDALE KENNELS

Boarding, Day Care,  
Training, Grooming

Local Authority Licenced  
Find us on Facebook

[www.facebook.com/  
Bladesdalekennels](http://www.facebook.com/Bladesdalekennels)

Low House, Snaizholme,  
Hawes DL8 3NB Tel **01969 667996**



### TEASDALE ELECTRICAL

Your local electrician serving the dales and the surrounding areas

Askrigg  
North Yorkshire

**Tel - 07814 184974 (Steve)**

Email - [teasdaleelectrical@icloud.com](mailto:teasdaleelectrical@icloud.com)



## Broadband Comes to Cotterdale

Householders in Cotterdale in the remote centre of the Yorkshire Dales National Park have attained the fastest internet speeds in England.

Local volunteers dug in around three miles of cabling with the support of non-profit community benefit society B4RN using a Government voucher scheme, as well as the National Park Authority's Sustainable Development Fund. They have installed gigabit full fibre broadband to all of the 14 homes in the hamlet, which is situated off the A684 in Upper Wensleydale.

The project began when Mr Colley, a resident of Cotterdale, heard that Broadband for the Rural North (B4RN) were helping the nearby community in Mallerstang, over Lunds Fell, to install fibre optic broadband to houses. Along with other volunteers, he put together a plan, contacted landowners to seek permission to dig

across their land, and raised funds. The fibre optic cabling network was led along the roadside of the A684 from the Moorcock Inn in Upper Wensleydale, where it had previously ended, to Thwaite Bridge Farm, before being led north over the fell and into Cotterdale.

Michael Lee, the CEO of B4RN, said: "What we exist to do is connect the really hard to reach rural properties that other suppliers aren't interested in connecting. We work with communities to enable them to connect".

## Hoppers Removals

Your friendly family removal team  
No job too big, no job too small -  
We like to accommodate all.  
House clearances too.  
Contact Christine on **01969 650893**



### James Peacock SOLID FUEL MERCHANT Bainbridge

Good quality fuels at competitive prices.  
Smokeless Fuel, House Coal, Logs and Sticks all available.

Deliveries in Wensleydale, Swaledale and Coverdale. No delivery too small.

### James Peacock PRIVATE HIRE Bainbridge

4-8 seats, Airport runs, pubs, stations, walking or cycling holiday, luggage transfers.....

**Tel: 01969 650212 / 650465**

Email: [james-peacock@btconnect.com](mailto:james-peacock@btconnect.com)

Web: [www.james-peacock.co.uk](http://www.james-peacock.co.uk)



### Yore Mill Craft Shop and Gallery

Art Classes for Spring  
overlooking the beautiful  
Aysgarth Falls

**Saturday 7<sup>th</sup> May** – Landscape -  
Local Area

**Saturday 4<sup>th</sup> June** – Sketching in Nature

For further details see our website

[www.yoremillcraftshopandgallery.co.uk](http://www.yoremillcraftshopandgallery.co.uk)

Yore Mill, Aysgarth, Leyburn DL8 3SR

**Tel: 01969 662829**

## COPY SHOP

PRINTING ~ PAPER

SCANNING & LAMINATING

*Wensleydale Press*

Burtersett Road, Hawes 01969 667575

[wpress@tiscali.co.uk](mailto:wpress@tiscali.co.uk)

## Cumbria Stove Centre

Supply and installation of wood,  
coal and gas stoves.

- ◆ Flue and chimney lining services.
- ◆ Inglenook specialists.
- ◆ Fully qualified and experienced Hetas engineers

01539 821061 (day) - 01539 625227 (eve)  
SHOWROOM: 34a, Main Street, Staveley

**MAY WHAT'S ON LISTING;**  
*please add these dates to your Diary*

## The Norah Worth Collection at the Dales Countryside Museum

### May

- 4 Church Coffee Morning. Redmire Village Hall. 10.30am.
- 8 Live Cinema - Ballet 'Merlin'. LA&CC. 4.00pm. See p.6.
- 12 Open Evening at Sedbergh Golf Club. 6.30pm. See p.12.
- 13 Little White Bus trip to Kendal. See p.5.
- 14 Daniel Tong Piano Recital. St. Andrew's Church, Aysgarth. 7.30pm. See p.32.
- 14/15 Craft Fair. Market House, Hawes.
- 17 Middleham and the Dales Local History Group meeting. Middleham Key Centre. 2.00pm. See p.11.
- 18 Penhill Ladies - 'Seasonal Singers'. Carperby Institute. 7.30pm. See p.17.
- 18 Church Afternoon Tea. Redmire Village Hall. 2.00pm.
- 18 Dance Celidh 'Six Feet, Three Shoes'. Wensleydale Rugby Club. 7.00pm. See p.6.
- 20 'The Fourmost' concert. Reeth Memorial Hall. 8.00pm. See p.14.
- 21 Leyburn u3a AGM. LA&CC. 10.00am.
- 23 Platinum Jubilee Exhibition opens. St. Margaret's Church, Hawes. See p. 5.
- 27 to 29 Platinum Jubilee Festival of Performing Arts. LA&CC. See p.6.
- 28/29 Craft Fair. Market House Hawes.
- 29 Foyle and Carroll in concert. See p.30.
- 30 Pound and Butterworth in concert. See p.30.
- 31 Bammental School Symphony Orchestra Concert. See p.30.

### June

- 2 Uttley, Smart and Goldscheider in concert. See p.30.
- 2 to 6 Flower Festival. St. Andrew's Church, Aysgarth. 9.00am - 6.00pm. See p.24.
- 4 'Street Party' Pennygarth, Hawes, 2.00pm. See p.16.

### Jubilee Celebrations

If you would like your village's Jubilee event mentioned in the next issue, please send the details to [uwnlinput@gmail.com](mailto:uwnlinput@gmail.com) by **Tuesday, May 24th**.

Tucked away in a cupboard near the Research Room at the DCM there lies a treasure trove that tells the stories of generations of Hawes residents. These are contained in the 150 folders of all shapes, sizes and colours that make up the Norah Worth Collection.

Norah was born at Littleover near Derby in 1909, the daughter of a coal merchant Thomas Betts and his wife Violet. She was educated at Friargate House School in Derby and when her father died, she and her mother moved to Leicester.



She married Thomas Bertram Worth at Billesdon in Leicestershire in October 1934. He was a lecturer in Electrical and Mechanical Engineering who went on to become Pro-Vice Chancellor of the University of Aston. During the war, Norah was involved with the W.V.S and proudly represented them at the Victory Parade in London, as recognition of her hard work. On his retirement, Thomas and Norah Worth came to live in Hawes.

Norah became increasingly involved in local activities, especially St Margaret's Church and the Women's Institute. The scrapbooks began in 1974, when the Federation of Women's Institutes organised a competition to commemorate European Architectural Heritage Year 1975. Local WI groups were asked to record features of local interest in their villages. A scrapbook was duly put together by Hawes WI, and although they did not win the

competition, Norah decided to continue to collect material, and so the scrapbooks steadily grew in number. She organised all her research into themed folders, adding a new one when they became full. Each one contains a myriad of newspaper cuttings, photographs, programmes of events and copies of magazines.

There are 21 folders alone covering the history of St Margaret's Church in Hawes from 1791 to 1997 through extracts and copies of the Hawes Parish Magazine in its various guises. They chronicle the succession of new vicars and numerous repairs to the church roof and tower as well as the building of a new vicarage. Every detail of parish life is explored through reports of Harvest Thanksgiving Services, Whist Drives, Second Hand Clothing Sales (including one in 1907 where parishioners complained that "it is being bought by those who are well able to buy new"), and articles with intriguing titles such as 'Why does the church bell in Hawes ring every day at 8.00am and 5.00pm?' Golden Weddings, Memorial Services and annual elections of church officials are all covered, as well as comments on events of national importance such as the death of Queen Victoria and the Ordination of Women.

Norah was a key organiser of the annual Church Festival and each year she would display her ever expanding collection of folders. These were greatly admired by visitors, and increasing numbers of local people sent her old photographs and other memorabilia which were all duly integrated into her scrapbooks. By 1989, over 73 scrapbooks covered 112 different subjects.

The themes present a truly comprehensive picture of all aspects of life in the Dales. There are folders on Hawes Primary School with lists of pupils, as well as local businesses such as the Hawes Mineral Water Company, the Hawes Dairy, the Ropemakers, the Auction Mart, Post Office and Fire Brigade. Sporting events are covered in folders relating to football, angling, sheepdog trials and fox hunting. There are programmes and cast lists for the productions of Hawes Drama Society from 1944-1996, the Hawes Operatic Society from 1925-1975, the Wensleydale Philharmonic Orchestra and String Quartet and the Hawes Brass Band.

What is especially exciting for family history researchers, is that wherever possible, Norah annotated the photos with the names of the

people in them. So, if a distant relative of yours took part in the 1926 production of *The Mikado*, or played for the Hawes Junior Football Team when they won the cup in 1909, then there could be hidden gems waiting to be discovered.



Particularly poignant are the folders which cover Hawes during the War Years where there are named photos of soldiers killed and reminiscences of the First World War. There is a 1938 Gas Mask Census and lists of Special Constables, Air Raid Wardens and a Rota for manning the Invasion Check Points in Hawes. Copies of wartime posters tell of the hardships endured by local residents.

Professor Worth died in 1980, while they were living at Duerley Beck House, The Hill, Hawes. Norah continued to add to her folders until her death in February 1998, aged 88. She has left a remarkable legacy of life in a Dales market town for future generations to enjoy.

**Val Davis**

## HAWES POST OFFICE in the Community Office

OPENING TIMES:

9.00am to 5.00pm Monday to Friday

9.00am to noon on Saturday

**Phone number: 01969 667201**

## BAINBRIDGE POST OFFICE

Post Office open at Bainbridge  
in Sycamore Hall 9.00am to 11.00am  
Mondays and Wednesdays

## ASKRIGG POST OFFICE

In Sykes House, Noon to 2.00pm  
Mondays and Wednesdays

## News from Dales Countryside Museum

The Dales Countryside Museum and National Park Centre are open daily **10.00am to 5.00pm**.

### Yorkshire Dales Young Archaeologists' Club

In April we explored medieval remedies and plants. We had a quiz and everyone got the chance to plant their own seeds. Hot apple juice (or hot chocolate depending on how "Medieval" people were feeling!) warmed everyone up before playing medieval games which was great fun. Members were also given their pots back from last month to take home.

We meet once a month on a Saturday morning from **10.00am to noon**. If you know a young person who might be interested, please let them know about the club. They're welcome to come along to try a session. May's session will be at Bolton Castle so please call in advance if you'd like to join in.

Email [dcm@yorkshiredales.org.uk](mailto:dcm@yorkshiredales.org.uk) or call **01969 666210** if you'd like to find out more.

**Exhibition** (included in museum admission)

**April 9th to July 10th.**

**Dales, Land and Sky** – contemporary textiles by The Small Group, inspired by the Yorkshire Dales

This is a wonderfully vibrant textile exhibition exploring different aspects of this beautiful Dales landscape. Landforms and dwellings, plants in the wild or cultivated in gardens, living creatures which make their home here and the words found in dialect poetry have all provided a source of inspiration. Each member of this North Yorkshire based group has focused upon their own area of interest, producing work using various techniques ranging from printing and machine appliqué to hand embroidery. The variety of work is stunning.



## Projects.

**In Your Words** - Dialect and Heritage project

May is libraries month for the project and Poppy, our Project Engagement Officer has been busy getting packs together for library visitors and people at home. We had a fabulous day for the Craft and Cloth event with demonstrations of different techniques, including rag rugging, crochet, Yorkshire button making, English paper piecing and spinning. Poppy and volunteer, Colin, welcomed lots of people to the Dialect and Heritage gazebo where they could share their words and have a good dialect related chat. On the Museum's Creation Station you can play with words and contribute your own family words through the Dialect survey.

Watch out for the project website going live via our social media and if you would like to be considered to contribute to our research, then we would love to hear from you.

Please contact our Engagement Officer Poppy Oldham on [p.oldham@leeds.ac.uk](mailto:p.oldham@leeds.ac.uk).

### Family Friendly Project.

Family visitors are enjoying the hands-on activities that have been added into the galleries and are having fun with our age related pick and mix activities. We'll be adding in our squirrel family mascot over the next few weeks as well as creating a club for families.

If you're a local family and would like to help us test out some of our ideas, we'd love to hear from you. Please get in touch by emailing [dcm@yorkshiredales.org.uk](mailto:dcm@yorkshiredales.org.uk)

### Events and Activities.

All events are included in the museum admission unless stated.

**Drawing from the Archives Workshop.**  
**Saturday, 30 April 30th. 10.00am – 1.00pm.**

Experiment with a wide range of mediums, including charcoal, chalk, oil pastels and ink, in the study of monograph photographs taken from our museum archive and the Dales held in Leeds Special Collections, in this morning workshop. This session is suitable for everyone, including those new to drawing or those looking to practice their skills. Techniques such as shading, composition using the grid technique, mark making and building up tone and highlights will be demonstrated, so you have the opportunity to improve on your drawing skills. Booking Essential. Adults £35.

**Basic Navigation Skills Walk. Sunday, May 1st. 2.00pm – 5.00pm.**

Join our expert map readers on this 3 mile (4.8 km) walk to learn basic navigation skills. Using an Ordnance Survey map, learn how to orientate a map, identify features, locate exact positions, and estimate distance and times to take you on your own voyages of discovery. Starts at the Dales Countryside Museum.

Booking Essential. £5. No dogs allowed.

**Traditional Rugmaking Demonstration. Sunday, May 15th. 11.00am – 4.00pm.**

A demonstration of traditional rug making including both proddy and hooked techniques - included in museum admission.

**Barns, Walls and Bridges. Tuesday, May 17th. 1.30pm – 4.00pm.**

Come along on this 4 mile (6.4km) walk in Herriot country and enjoy panoramic views over Upper Wensleydale. Barns, walls and bridges are important features of Wensleydale and played a crucial part in the development of local industry and agriculture. The walk includes the woodland and waterfalls of Shaw Gill. Starts at the Dales Countryside Museum.

Booking Essential. £5. No dogs allowed.

**Trees in the Dales. Friday, May 20th. 7.30pm – 9.00pm.**

An illustrated talk by author David Joy about Trees in the Dales. Part of the Friends of the Museum annual lecture programme.

Free - donations welcome.

**A Woolly Wander Experience. Sunday, May 22nd. 10.00am – 3.00pm.**

Visit a local alpaca farm on Raydaleside, meet the animals and take them for a gentle stroll through the spectacular landscape of the Yorkshire Dales, with stunning views of the Dales' second largest natural lake, Semerwater. Explore the museum textile gallery and learn the techniques and processes to create your own felted picture using fibre from the alpacas you have met!

Lunch is included, provided by the Firebox cafe. Booking essential. £50 per person.

**Drystone Walling Demonstration. Tuesday, May 31st. 11.00am – 3.00pm.**

Join our Dales Volunteers as they showcase the traditional craft of drystone walling and

explain the construction of this iconic feature of the National Park landscape. From the foundations to the top stones, find out how a pile of stones can be turned into something that will last for centuries.

**Flora and Fauna of Upper Wensleydale. Tuesday, June 7th. 11.30am – 3.00pm.**

Join our experienced Dales Volunteers on this 4 mile (6.4km) walk exploring the flora and fauna in this area. The walk follows part of the riverside where flowers and birds can be seen. Walk along Sedbusk lane to Simonstone, taking in the flowers found on the waysides. On to Shaw Ghyll to see the waterfalls and where plants like wild garlic like to grow. Red Squirrels are known to be spotted in this area too! Starts at the Dales Countryside Museum.

Booking Essential. £5 per person. No dogs allowed.



**A personal friendly service for 'all creatures great and small'**

- Small animal consultations, diagnostics, and surgery
- Budget friendly preventative health care plans for dogs, cats, and horses
- Farm Animal routine work
- Ambulatory equine services
- In-house 24-hour emergency service for small animal, farm, and equine

**01969 422201**

**[www.wensleydale-vets.com](http://www.wensleydale-vets.com)**

**[info@wensleydale-vets.com](mailto:info@wensleydale-vets.com)**



**Orthopaedic Massage**

Back & neck pain, strains & sprains  
Nerve injuries, sciatica, chronic pain

**Robust Covid-Secure  
procedures in place**

**Clinic in Hawes**

**07975 999373**

Find me on **Facebook** [www.reflex-om.com](http://www.reflex-om.com)

## **Seven Decades: Celebrating the Reign of Queen Elizabeth II St Andrew's, Aysgarth, Flower Festival June 2nd - 6th**

Twenty talented flower arrangers will be demonstrating their creative skills in a fabulous festival of floristry at St Andrew's Church, Aysgarth, this summer. In celebration of HM The Queen's Platinum Jubilee, displays marking significant royal and social events in each of the seven decades of the Queen's reign will be created by the church team and friends from Wensleydale Flower Club. There'll be something for visitors of all ages to enjoy with arrangements ranging from the Coronation regalia to Coronation Chicken, the Royal Yacht Britannia to Beatlemania, and coming right up to date with the Queen's Green Canopy Initiative to mark her Jubilee.

The Flower Festival runs for five days over the Jubilee Bank Holiday weekend, from **Thursday, 2nd to Monday, June 6th**, and the church will be open daily from **9.00am to 6.00pm**. Entry is free of charge but donations would be appreciated.

We also warmly invite you to join us for our **11.00am** service on **Pentecost Sunday, June 5th**, when, in common with churches throughout the UK and Commonwealth, we will be celebrating our Queen's Platinum Jubilee and her years of faith and service.

### **Church Services in Penhill Benefice**

Before making any journey please check our website [penhillbenefice.co.uk/services](http://penhillbenefice.co.uk/services) for updates.

There will be a Telephone Service each **Sunday** at **9.30am**. Dial **0333 0110 946** and enter room number **61337190#** and PIN **7450#**. Depending on your provider this is either free or costs a local rate phone call.

#### **Sunday, May 1st.**

**9.30am** Morning Prayer, St. Mary's, Redmire.

**9.30am** Holy Communion, St. Margaret's, Preston under Scar.

**11.00am** Holy Communion, St. Andrew's, Aysgarth.

**11.00am** Holy Communion, St. Bartholomew's, West Witton.

#### **Sunday, May 8th.**

**10.30am** Penhill Together Holy Communion, St. Margaret's Preston under Scar with a talk about 'Mary's Meals' a charity who serves nutritious school meals to children living in some of the world's poorest countries.

#### **Sunday, May 15th.**

**9.30am** Holy Communion, St. Mary's, Redmire.

**9.30am** Holy Communion, St. Margaret's, Preston under Scar.

**11.00am** Holy Communion, St. Andrew's, Aysgarth.

**11.00am** Morning Prayer and APCM, St. Bartholomew's, West Witton.

#### **Sunday, May 22nd.**

**9.30am** Holy Communion, St. Bartholomew's, West Witton.

**11.00am** Morning Prayer and 2 Baptisms, St. Andrew's, Aysgarth.

**6.00pm** Evening Prayer, Thornton Rust Mission Room.

#### **Sunday, May 29th.**

**9.30am** United Benefice Services: Book of Common Prayer, Holy Communion, St. Andrew's Aysgarth.

**4.00pm** Messy Church, St. Andrew's, Aysgarth.

### **May Mid-Week Services.**

**Thursday 12th, and 26th at 9.30am.** Holy Communion, at St. Bartholomew's, West Witton.

**Church Coffee Morning: Wednesday, May 4th** from **10.30am to 1.00pm** at Redmire Village Hall.

**Church Afternoon Tea: Wednesday, May 18th** from **2.00pm to 4.00pm**, at Redmire Village Hall.

If you would like to buy a print of St. Oswald's Church at Castle Bolton priced at £20 which is mounted and cellophane wrapped, please ring **01969 663097**. The print can be viewed in colour on the website [www.penhillbenefice.co.uk](http://www.penhillbenefice.co.uk).



## Hawes in Bloom

As we fast approach planting time again I thought I would say a few words about our coming summer display plans.

As I have mentioned in previous articles Hawes in Bloom (H I B) will be going ahead with the usual planters around the Town in the theme of pink (shades including cerise), white and a bit of blue. I am delighted to learn that many businesses are going ahead with their own baskets as I am no longer able to obtain them through Darlington Parks Department.

I have recently had to replace the little van I used for the scheme and other Town projects and now have a second-hand pick up. I am hoping that funds will trickle in to help towards the road tax, insurance and fuelling of this and would just mention too, that funds will be much needed towards the main cost of the summer displays around our town as usual.

Since H I B began some seven years ago we have been very fortunate to have had a temporary base to work from at the end of May for several weeks each year. This has been at the rear premises of G-Tec Training down on the Industrial Estate. Without the generosity of Griff and Tracey Thomas in allowing this space, even during the increasingly busy training periods held there, it would have been impossible to run the scheme. A big thank you to you both.

We have now been kindly offered the use of part of the yard at W. Metcalfe & Sons Ltd at Appersett and I wish to thank Peter Metcalfe for this generous gesture. It has already been a big help in being able to take delivery and store those items purchased with the Welcome Back Fund grant.

I look forward to once again planting up the many flower containers with those ever generous volunteers without whom the scheme could not exist.

Thank you everyone for your support.

**Richard Noble**  
Your resident Plant Pest



### Hawes Countrystore



"For All The Farmers Needs"


**Not Just All Your Agricultural Supplies!**  
Country clothing, work ware & footwear.  
Pet, equine, poultry, wild bird feed,  
garden supplies and household goods!

**Call in & see for yourself!**  
Tel- 01969 667 334 Fax- 01969 667 335  
Monday - Friday 8am - 5pm Saturday 9am - Noon

CBAL Fuels- 01524 599 333
Head Office (Carlisle)- 01228 552 650

Hawes @carrs-billington.com
www.carrs-billington.com Follow us



Sycamore Hall Hair Salon

Unisex

Open Thursday, Friday and  
Saturday

With Sonja

Booking is Advisable on 650158

## Bainbridge Vets Ltd

**A comprehensive, friendly veterinary service treating animals large and small 24 hour emergency service.**

**Open Surgery**  
Monday-Friday 9.00-9.30am and 2.00- 2.30pm  
Saturday morning 9.00-9.30am  
(appointments available at other times)

**01969 650263**



## EDGLEY GARAGE

Edgley Garage, Aysgarth,  
Leyburn, North Yorkshire,  
DL8 3AD  
01969 663094  
[edgleygarage@yahoo.com](mailto:edgleygarage@yahoo.com)  
MOT testing; Full servicing;  
Air conditioning service;  
Brakes, clutches and all  
general repairs to vehicles.



The children have been busy decorating plant pots, planting sunflower seeds, joining in with lots of Easter crafts and we had a visit from the Easter bunny. We have been learning about how things grow and how we need to help take care of them to help them to grow and we have been measuring things to see how big or little they are. We enjoyed a visit from Rachel with her little boy Toby and we are excited that he will soon be joining the setting as Rachel begins a fazed return to work following her maternity leave.

We have been making plans on how we can celebrate the Queen's jubilee next month and learn a little about the Queen and our country.

At Dalesplay will have spaces available in all our rooms from July, so if you need care for your little ones even if it is just one day a week to get used to mixing with peers, get in touch and we can show you around and discuss your requirements. Dalesplay cares for children 0-12 years, before and after school. During the holidays, we provide sessional care and funded places for 2, 3 and 4 year olds. Please call **Joanne or Louise** on **01969 667789** or email us at [dalesplay1@btconnect.com](mailto:dalesplay1@btconnect.com) for more information.



### Wensleydale Craft Fairs

Quality crafts by local and regional makers

at the Market House, Hawes

**14th-15th May 28th-29th May**

[www.wensleyfairs.co.uk](http://www.wensleyfairs.co.uk)

Tel: 07857 439450



### Barn Studio Bookkeeping

Bookkeeping | Tax Returns | VAT Returns  
Company and Sole Trader Accounts

*Friendly service in the Yorkshire Dales*

Terry Newman MICB | 07572 842398  
[barnstudiobookkeeping@gmail.com](mailto:barnstudiobookkeeping@gmail.com)

Bolton House, West Burton, DL8 4JU



Family run Teashop situated next to the magnificent Aysgarth Falls

Light Lunches ~ Soup & Sandwiches ~ Afternoon Teas

Cakes, Scones, Biscuits & Traybakes

Muddy Boots & Dogs Welcome ~ Card Payments Accepted

01969 663446



### M Fothergill

**Building Services**

All aspects of building work undertaken **667936 / 07966 624649**

Hawes DL8 3RP

Plastering Alterations Extensions  
Roof work General Maintenance

### J. W. COCKETT & SON

**Family Butchers**

Estd. 1854

**Wholesale & Retail Bakers**

**Main Street, Hawes**

**Tel 01969 667251**

**Best Quality Meats**

**High Class Baking**

**Freezer Orders Supplied**

travel counsellors ⇌

Hi I'm Dinah

*Your local Travel Counsellor based in Wensleydale*

*I offer a personal, bespoke travel service, From city breaks to cruises, luxury beach holidays to staycations - taking care of everything from start to finish.*

*Following the Covid-19 pandemic, it's has never been more important to book with your local travel agent*



**Tel. 01969 678060**

[dinah@travelcounsellors.com](mailto:dinah@travelcounsellors.com)

## Prunings

I have taken a slice off down one side of the box hedge. It doesn't look much narrower, but at least it is a start. I think it will need another shave later in the year when I may feel a bit braver, but at least some of the thicker stems are now near the surface. Time will tell.

Last year I had a small patch of wood sorrel near the front door. It's a pretty little thing with

shamrock like leaves and curled up white flowers. My Grandma would have said, "pull it out - it's a weed." Well I didn't, and now it has spread along the front bed under the house



wall, it seems to be everywhere. When the sun shines the beautiful delicate flowers open with a faintly blue tinge. Some of it will have to go, but I love the way it insinuates itself between the old flagstones. Nature is very good at filling gaps, even though some of the fillers are much more evil and difficult to extract.

The white lilac is about to burst into frothy white and smell gorgeous. Shortly afterwards it will put on its leaves and much of the blossom will be hidden, and I shall wonder why I got so excited. The purple variety does not hide its flowers in the same way, but it is not as near to the house, and I don't see it.

The wooden tubs have been lovely, - first little blue irises, then the tête à têtes, and now they are filled with natural invaders - the lesser celandine. Given that the strappy leaves of the iris and the daffs will have to stay a while to feed the bulbs, the celandines keep them looking cheery and will have to remain until I choose something for the Summer.

### The Iron Maiden

*Not enough hours in the day?  
Fed up of never ending ironing?*

My ironing service is definitely a way of buying back much needed quality time in a busy life!

**Tracy Hume**

**07527 796523 or 01969 666048.**

Can arrange collection/delivery

Following on from the information about harmful plants, I was intrigued to read in Garden News (April 16th) that Hemerocallis (Day Lilies) are common ingredients in Asian cuisine. It seems that all parts are edible (for humans but not cats). The roots taste like sweet potatoes and the unopened buds are used in stir fries. Who would have known?

This is when I notice all the jobs I haven't done. I had ignored the Philadelphus Aurea. Now it is huge, but will have to wait for a clip until after flowering as I don't want to lose the delicious scent. The Rose of Sharon, on the other hand will survive another attack, and if I don't do it soon we shall not be able to get to the dustbin! Now the table is back on the patio I realise that I'll need to clip some more off the Weigelia as it will interfere with the parasol, and some of the shrubby potentillas need a clip. Perhaps when I've got through most of that I can start preparing a home for the sweet peas, which were delivered the day before we woke up to 3 inches of snow. You couldn't write it!

Whatever you grow, take time to enjoy it!

**Rose Rambler**

## Firewood

**Seasoned hardwood logs**

**Tel: 01969 662692**

**Mob: 07970 629227**

## J R IVESON TV & AUDIO SERVICES

**Main Street Hawes North Yorkshire DL8 3QL  
Telephone: 01969 667409**

Televisions • Satellite Equipment  
Hard Drive Recorders • DVD Recorders & Players  
Compact Hi Fi Systems • Cameras • Camcorders  
Washing Machines • Dishwashers • Cookers  
Fridges • Freezers • Microwaves  
Vacuum Cleaners

Cookshop and Soft Furnishings  
Come and visit us for all your  
kitchen and soft furnishing needs  
Visit us on Facebook

**SALES • SERVICE • SATELLITE • AERIALS**



## Police Report

Incidents of note over the last month;

1 reported theft from the Co-op in Leyburn on March 8th - an unknown male took 2 bottles of Jack Daniels.

1 report of theft of cooking oil from the public house in Wensley.

There was a total of 30 crimes recorded in the area during March. I do not report crimes whereby victims could potentially be identified for example, domestic violence or harassment, although they are included in the totals below.

5 crimes were recorded as Fraud whereby people have reported telephone scams. These include eBay and Amazon scams.

A full breakdown by category is as follows:

- 11 - Violence
- 2 - Criminal Damage
- 5 - Fraud
- 2 - Burglary
- 4 - Theft
- 2 - Drugs possession
- 4 - Others

Throughout March there were 10 road traffic collisions reported on our roads. 9 resulting in damage only, and 1 resulting in injuries.

**PC1192 Gary Hankin**

**PCSO 5232 Don Watson**

**PCSO 5550 Tracie Taylor-Page**

**Leyburn and the Dales Safer  
Neighbourhood Team**

# PENNINE PRINT



Full Colour Print  
Invites - Tickets  
Brochures - Leaflets  
Menus  
*all at affordable Prices*  
**simon@pennineprint.co.uk**  
Tel: 07860 620 411

## Gutters Cleared!

We remove:-

Moss, Leaves, Grass,  
Growth & Debris

We can also clean drives and patios

**Tel: 01969 715008**



Get an instant price  
on our website

[www.gutterpro.co.uk](http://www.gutterpro.co.uk)

## Bainbridge Village Store

Located within Sycamore Hall

**Monday to Saturday  
9.00 am to 1.00 pm**


We offer a wide range of groceries, including  
fresh fruit & veg,  
Dairy, ice cream, pet supplies, alcohol, bread  
and Frozen meals

Everyone Welcome  
Please Support our Local Business



**Edie Peacock  
Hairdressing  
At the Parlour**

Call: 07817 312906

**D MOORE & M BLACKHURST**  
BUILDERS  GENERAL  
MAINTENANCE

*All types of building work undertaken  
25 years' experience ~ Free Estimates*

**07772 284602 ~ 07975 897715**

3 Woodburn, Hawes. 01969 667505

## Mystery Picture

Last month's Mystery Picture was of Eller Beck waterfall on the south side of the A684 near Burtersett.

Where would you find this collection of chimney pots?



## Welcome Back Fund

I am pleased to report that the permanent planters that were purchased with some of the Fund money are now in place in Hawes High Street and also around the bus shelter in the Holme. Thanks are due to the usual band of cheerful volunteers who helped with this.

This now completes the 'spend' of funds that were allocated under the Government post Covid lock-down initiative to help towns like ours to welcome people back. We now have two new picnic tables for the Children's Playground, four new hardwood street benches and two custom made notice boards. I am happy to say that there are also some suitable plants that were purchased to fill in gaps in George's Garden above the Penny Garth car park too. I will be in touch with members of that gardening volunteer team.

Thanks are also due to Richmond District Council who administered the Fund and helped with advice for our application and then promptly forwarded the money.

**Richard Noble**

### **W.S.HARTLE FAMILY BUTCHER, WEST BURTON**

Best Quality Meat, West Burton Lamb,  
Homemade Sausages and Burgers,  
Free Local Delivery and Freezer Orders  
Tel: David on **01969 663302** or visit  
[www.hartlebutchers.co.uk](http://www.hartlebutchers.co.uk)



**Robin Jessop**

### **Free Market Appraisals**

For Selling & Letting Rural Property.  
Specialists in Selling by Auction.

Market Valuations for Tax Planning,  
Lending, Compensation and Council Tax  
purposes

Marwood House, Railway Street, Leyburn  
Tel: 622800



**Seasonal Bedding, Shrubs & Sheds**  
**Perennials, Pots & Peat Free Compost**  
**Roses, Ronseal Paint & Recycled Pots**  
**Ideas & Inspiration**  
**National Garden Gift Vouchers**  
**Gifts, Gloves & Greetings Cards**  
**Trees, Tools, Twine & Tomatoes**  
**It's The Perfect Time To Visit**  
**Multibuy Offers Always Available**  
**Everything for your Garden!**

*10am—5pm Mon-Sat/10am-4pm Sun & Bank  
Holiday*

Station Yard, Harmby Road, Leyburn DL8 5ET  
[wensleydalegardencentre2015@gmail.com](mailto:wensleydalegardencentre2015@gmail.com)  
Tel: 01969 625397  
[www.wensleydalegardencentre.co.uk](http://www.wensleydalegardencentre.co.uk)



**SWALEDALE  
FESTIVAL**

**50TH ANNIVERSARY  
1972 - 2022**

**May 28th to June 11th**

This year's Festival features 50 music, arts and walking events in celebration of the organisation's 50th anniversary. With not long to go until the fields dance with buttercups and the merriment begins, you may be wondering where to start, so we've picked out some gems that are sure to entertain and inspire.

The Festival's Young Artists Platform, which showcases tomorrow's stars, sees Bammental School Symphony Orchestra travelling from Germany with their inspirational conductor to perform a combination of orchestral classics, tangos and Irish folk tunes on **Tuesday, May 31st**.

Also taking their place on the YAP stage are maestros Richard Uttley, Callum Smart, and Ben Goldscheider on **Thursday, June 2nd**. Pianist Uttley played in the Festival in the early days of what is now a stellar career. He is joined by two more fast-rising stars - the superb violinist (and Instagram king!) Smart, and the gifted French horn player and BBC Young Musician finalist Goldscheider.

Another bright young concert not to be missed will be given by the Magnard Ensemble, a talented woodwind group with great chemistry.



They will perform a mouthwatering programme of Byrd, Mozart and Stephen Dodgson on **Tuesday, June 7th**.

This year's programme includes some Festival favourites who have produced some truly memorable shows in past years. Aurora Percussion Duo return to share their beautifully choreographed music on a myriad of instruments from maracas to marimbas on **Monday June 6th**, and the world-renowned vocal ensemble VOCES8 will lead a relaxed singing workshop for all abilities on **Friday, June 3rd**.

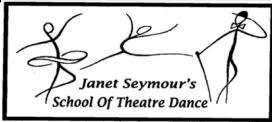
Friends since they were neighbours in the sixties, guitarist Dave Kelly and keyboardist Bob Hall have had illustrious careers in the British blues scene and have won many awards for their artistry. These living legends, who cut their teeth with the likes of Howlin' Wolf, Buddy Guy, John Lee Hooker and Muddy Waters will be jamming with bassist Hilary Blythe on **Monday, June 6th**.

There are some great duos in the line-up this year. Violinist Michael Foyle and cellist Thomas Carroll - two exceptional players who are in great demand around the world - will perform duets by Ravel, Martinu and Kodaly on **Sunday, May 29th**. And the amazing folk harmonica wizard Will Pound will spar with the superb young guitarist Jenn Butterworth on **Monday, May 30th**.

The wonderful young Australian soprano Lotte Betts-Dean will sing with her father, the violist and famous composer Brett Dean. Their performance on **Saturday, June 11th** will include the world premiere of a piece which Brett Dean has composed especially for the Festival's 50th anniversary.



All this, plus exhibitions, walks, talks, film, poetry, a Family Fun Day in Reeth and a whole lot more. Tickets for under 25s are available for just £3. For information and bookings please visit [www.swalefest.org](http://www.swalefest.org).



**Ballet for boys and girls  
From the age of 3 years**

**Modern Dance/Jazz  
For children and teenagers**

**Tap for children and adults**

**For more information please contact:**

**Janet Seymour LRAD AISTD  
tel: 01748 884677 mobile: 07958 145752  
www.swaledaledance.co.uk**



**TIMBER BUILDINGS**

Swan Farm, Redmire,  
Leyburn DL8 4HA  
**01969 625647**  
castletimberbuildings@mail.com  
castletimberbuildings.com

All of our products are hand made to order,  
from the smallest of sheds to the more  
elaborate designed summer houses. Our team  
of experienced joiners and specialists are on  
hand to advise and guide you, to help get the  
most of your product.

We aim to deliver the highest quality buildings,  
tailor-made to your requirements using only  
the finest quality timber and ethically sourced.  
You can be reassured that we also care for the  
environment.



Your local family owned Coach Opera-



**COACH HOLIDAYS &  
FULL DAY EXCURSION PROGRAMME**

**Call 015242 41330 for our current brochures or  
visit our website to view up and coming Holidays  
& Day Trips**

**Email: [enquiries@bibbys.co.uk](mailto:enquiries@bibbys.co.uk)  
Website: [www.bibbys.co.uk](http://www.bibbys.co.uk)**

**Aysgarth Garage - Tel 663900**

Our store offers a wide range of goods from  
fresh food to frozen. We stock:

Fresh sandwiches, pies, sausage rolls and  
pasties, fruit and vegetables, milk and dairy  
products. A wide range of cheese and cooked  
meats.

An excellent selection of beer and wine and  
soft drinks plus snacks, crisps, and confec-  
tionery. Stationery, crossword puzzles, greet-  
ing cards and stamps.

Barbecue essentials, charcoal, firelighters,  
instant barbecues logs and kindling. Dog food,  
Cat food and bird food with a selection of pet  
toys and treats. Tools, hardware, and garden  
implements.

**We are open 7 days a week from 7.30am to  
6.00pm.**

**THE HEALING COLLECTIVE**

Encouraging health and well being  
with a range of therapies.

*Therapies for animals also available.*

Coach House, Berry's Farm Shop & Café,  
Swinithwaite, DL8 4UH. t.0845 474 2383

[info@healingcollective.co.uk](mailto:info@healingcollective.co.uk)  
[www.healingcollective.co.uk](http://www.healingcollective.co.uk)



## DENTURE PROBLEMS?



Denture Studio

**Are you unhappy with the look or fit of your existing dentures?**

**WE CAN HELP**

Our in-house Clinical Dental Technician Mark can provide quality bespoke dentures designed to your individual needs



To Book  
**FREE**  
Consultation CALL  
**01677 422968**

**Website: [www.orcharddentallab.co.uk](http://www.orcharddentallab.co.uk)**  
**Email: [info@orcharddentallab.co.uk](mailto:info@orcharddentallab.co.uk)**  
**1 The Villas, Bridge Street, Bedale, DL8 2AB**



# Home Run

*Pet sitting, House sitting, Dog walking*

I offer a friendly, personalised pet and house sitting service in Wensleydale and further afield.

Nicola – 07866 336924

[nicola@homerundogsitting.co.uk](mailto:nicola@homerundogsitting.co.uk)

[www.homerundogsitting.co.uk](http://www.homerundogsitting.co.uk)



- City & Guilds qualified
- Fully insured ● Certificates issued
- Prompt professional service
- Bird guards and cowls fitted
- NO MESS - NO FUSS!

**Martin Tradewell**

**QUALIFIED CHIMNEY SWEEP**

**01969 640099**

Glenside, Horsehouse, Leyburn. DL8 4TS

Email: [martin@daleschimneysweep.co.uk](mailto:martin@daleschimneysweep.co.uk)



## Wensleydale Concert Series

Our 2022 concert series starts on **Saturday, May 14th at 7.30pm** in St. Andrew's Church Aysgarth with a piano recital by Daniel Tong.



Daniel was due to visit Wensleydale Concert Series last year with cellist Robin Michael but a last minute illness prevented him coming so we are pleased to welcome him to open our series with a lovely programme of piano music by Beethoven, Schubert and Brahms.

Daniel has made numerous recordings as a soloist and is also a prolific chamber musician (he recently recorded 3 Beethoven sonatas Op. 10 for Resonus Classics, and is including the first sonata in our concert). Tickets are £15 (£1 for anyone in full time education).

**Please buy tickets in advance** - with Covid still a present danger we are, as last year, reducing the number of tickets for sale to allow social distancing and so we want to avoid queuing at the door for tickets. Please note last year most concerts sold out so buy your tickets early - the current number of available tickets for each concert is shown live on our website.

In addition to single tickets we have a £65 season ticket available to purchase until the first concert. This gives a substantial discount of £40 for all 7 concerts in the series. See our website for details - if you want to buy by phone, please quote May 14th and Wensleydale Concert Series 2022 Season Ticket.

Tickets are now on sale at our website [www.wensleydaleconcertseries.co.uk](http://www.wensleydaleconcertseries.co.uk) (you can purchase online, by phone or by post). If you do not have access to the internet, you can purchase tickets by phone on **0333 66 3366** (this uses our ticket agent Ticketsource - please quote the date and Daniel Tong).





TOM ADDISON

FINE FURNITURE

Fine quality furniture handcrafted in the heart of  
Wensleydale.

Free standing and fitted furniture designed &  
handmade to your requirements.



All enquiries welcome: 07585952951



tom@tafinefurniture.co.uk www.tafinefurniture.co.uk



rural landscapes

## DESIGN, BUILD & MAINTAIN

Est since 2008. 5 Star Rated.

Professional, polite team offers a  
comprehensive supply and install service for  
all hard landscaping, planting, advice, **bespoke  
projects**, custom garden buildings, driveways,  
patios, steps, rendering and block work.

**FULLY INSURED & EQUIPT.**

[www.rurallandscapescumbria.co.uk](http://www.rurallandscapescumbria.co.uk)

**017683 89100 / 07377 566417**

Find us on Yell.com



Yorkshire Dales Accountancy  
Chartered Accountants

### taxation & business advisors

We provide a broad range of accountancy  
and taxation services to our clients.

Please feel free to contact Martin or Hazel.

E-mail:

[info@yorkshiredalesaccountancy.co.uk](mailto:info@yorkshiredalesaccountancy.co.uk)

**Telephone: 01969 678128**

Website:

[www.yorkshiredalesaccountancy.co.uk](http://www.yorkshiredalesaccountancy.co.uk)

## Arena Physio and sports rehab.

physiotherapy & sports rehabilitation clinic

Assessment, treatment and rehabilitation of  
musculoskeletal pain, injury and dysfunction.

*Appointments available at:*

Carperby Football Club, Carperby,  
Leyburn, North Yorkshire. DL8 4DJ.

or

Darlington Mowden Park RFC  
Darlington Arena, Neasham Road,  
Darlington. DL2 1DL

**Tel: 01325 728092 Mob: 07799767075**

[www.arenaphysio.co.uk](http://www.arenaphysio.co.uk)

## WANTED - SCRAP CARS AND COMMERCIALS

FREE collection from all areas.

[www.scrapcarmacumbria.co.uk](http://www.scrapcarmacumbria.co.uk).

**07825 293099**

## The Alchemist's Cottage



Tea and Coffee  
Merchant.

**Tel 01969 667182**

**Mob 07518 602594**

**Town Foot, Hawes**  
**Open everyday 9.30 to 5.30**

Tea, Coffee, Takeaway hot  
drinks, Gifts and much more.

[www.thealchemistscottage.com](http://www.thealchemistscottage.com)

# Index to Advertisers

	Page		Page
Accountants, O'Reilly, Hawes	14	Joiner and Cabinet Maker, Bushby	13
Accountancy, Yorkshire Dales	33	Joiner, Snaizeholme	7
Advertising Rates and Contacts	36	Joiner, Solid Joinery Solutions	9
Alchemist's Cottage Tea and Coffee Merchant	33	Kennels - Bladesdale	18
Atkinson J.T., Builders Merchant	36	Logs, Springbank Logs, Hawes	16
Aysgarth Garage	31	Logs, Seasoned Hardwood	27
Bainbridge Village Store	28	Massage, Mobile Therapist	15
Boiler Service – Efficient Heat	9	Monumental Sculptors, Parkin and Jackson	7
Boiler and Aga Service, M.F.W.	17	Moorcock Inn	17
Bookkeeping, Barn Studio	26	Music Tuition, Colin Bailey	35
Bridge Club, Wensley	9	Optician - Mike Addison	5
Builder and Plasterer, M. Moore and Son	5	Orthopaedic Massage, Reflex	23
Builder, Dinsdale John & Ted	17	Pet and Wildlife Supplies, Rhodes, Hawes	7
Builder, R&B Construction	18	Pet & House Sitting, Home Run	32
Builders, Moore and Blackhurst	28	Physio - Arena	33
Building Contractor, Andrew Hawkins	6	Plumbing and Bathrooms - Greiff	31
Building Services, Fothergill M	26	Plumbing and Heating, Parfitt J	17
Butchers , Cocketts, Hawes	26	Portable Appliance Testing	6
Butchers, Hartle, West Burton	29	Post Office, Hawes, Bainbridge and Askrigg	21
Carpet Cleaning, Eco Dry	16	Print Services, Pennine Print	28
Chimney Sweep, Dales Sweep	32	Print Sevices, Wensleydale Press	19
Coach Travel and Holidays – Bibbys	31	Reflexology and Reika, Askrigg	4
Coal Merchant, Peacock	19	Removals, Hoppers	19
Cumbria Stove Centre	19	School of Dance	31
Dales Garage	12	Scrap Car and Commercials Collection	33
Dales Web Solutions	6	Sewing Needs; Kearton	14
Dental Lab, Orchard	32	Solicitor, Hall & Birtles	13
Eco Cleaning Products	13	Solicitors, McGarry	11
Edgley Garage, Aysgarth	25	Stone House Hotel	8
Electricians - Teasdale	18	Sykes House, Askrigg	36
Estate Agent, Jessop Robin	29	Tailoring - Applegarth Couture	3
Fabrics for sale	12	Taxi, Peacock, Bainbridge	19
Fabrics – Pennine Outdoor	14	Tea Room, Corn Mill, Bainbridge	17
Fish Market, Hawes	14	Tea Room, Hamiltons, Aysgarth	6
Flooring - NH	15	Tea Room, Mill Race, Aysgarth	26
Furniture, Handcrafted, Tom Addison	33	Timber Buildings, Castle	31
Garden Centre Wensleydale, Leyburn	29	Travel Counsellors	26
Garden Landscaping & Design	33	Vets Bainbridge	25
Gutter Cleaning	28	Vets, Wensleydale	23
Hawes Country Store	25	Wensleydale Craft Fairs	26
H&M Craftsmen, Ingleton	5	Wensleydale Creamery, Hawes	17
Hairdressing, Edie Peacock	28	Wensleydale Tree Services, D. Allen	11
Hairdressing, Sycamore Hall	25	White Rose Hotel, Askrigg	15
Hairdressing, Twisted	12	Woodcraft Studio & Timber Services	13
Handyman – Dales View	11	Yorebridge House	16
Healing Collective, Swinithwaite	31	Yore Mill Craft Shop & Gallery	19
Hearing Tests and Aids	7	Yorkshire Foot Clinic	11
Ironing Service–Tracy Hume	27		
Iveson, J.R, T.V. and Audio	27		



## Blueboxt Productions – May Update

### ‘Decades – A Musical Celebration’

Calling interested young people and volunteers who would like to take part... Last month we launched our ambitious youth led project ‘Decades – a musical celebration’. The aim is to create a fully staged concert incorporating imagery and video projection, scripted narration, sound and lighting, set and costumes. The chosen programme will be performed in community venues across North Yorkshire and celebrate popular music and key moments that form the backdrop to the Queen’s historic seventy-year reign. We had a great response to the article and the group are working hard to create their presentation as part of the year-long Platinum Jubilee celebrations.

We are still accepting expressions of interest from young people, and the young at heart, who would like to be part of this special production. There are a range of front and backstage roles which includes everything from performing to design, film and video editing, programming, marketing, finance, event management and logistics. If you are not quite sure how you would like to be involved that’s fine too, simply get in touch and we can explore the possibilities together (see below for contact details).

Our first concert is on **Saturday, May 28th at 7.30pm**, at Leyburn Arts & Community Centre as part of their Platinum Jubilee Festival of Performing Arts. The weekend starts on Friday evening with a cinema presentation of ‘The Queen’ starring Helen Mirren and runs to **Sunday, May 29th**. During the weekend there will be dance exhibitions, live theatre and live music performances from the Dales Community Pop Choir, Yoredale Strummers and Leyburn Band as well as solo and group performances from our young people. Most events are free to attend with refreshments available. See [www.leyburnartscentre.com](http://www.leyburnartscentre.com) for full details and come along and celebrate with us.

**Musical Cultures- workshops and concerts.** We had great fun delivering the final two of our world music workshops which took place in March supported by NYMAZ and Youth Music, using public funding from the National Lottery through Arts Council England. Folk Music was led by Rebecca Denniff and David Owen – Storm Chorus (Whitby) and Samba drumming

by Sam Ward-Hardy and James Lane from Jack Drum Arts (Crook).

Rebecca and David are also delivery partners with NYMAZ and it was great to finally invite them over to work with our young creatives. They brought a different energy and music making experience to the sessions. The group worked together to explore traditional folk songs and David’s Periodic Table of Folk which outlined the key essential elements often used in compositions before splitting into two groups to create their own compositions with a modern-day twist. It was great to see participants developing their ideas together and sharing them with the group. Their haunting tales of broken romance and ghostly revenge in local woodland captivated the audience who attended the informal sharing concert.

Our final workshop in the series was led by Sam and James the youngest leaders, who had a great rapport with the young people. Sam shared his experiences from his gap year travelling to Brazil and playing music with different bacteria. The group quickly got into the groove and had the opportunity to shape the second day’s activities. They chose to compose a song with lyrics devised from answers they gave to a series of questions. The weekend finished with another opportunity for family and friends to be part of the sharing concert. It was great to see community representatives who made the effort to travel from Leyburn to West Burton just to support the young people and see what they had created in the final workshop.

We hope to be able to offer a further series of workshops later in the year. Next month, we will be able to finally share some Fell-Foss Theatre news too!

To book tickets, to find out more information or to support our activities please contact **Colin Bailey on 07711 211169**, email [info@blueboxt.co.uk](mailto:info@blueboxt.co.uk) or book online at [www.blueboxt.co.uk](http://www.blueboxt.co.uk).

**Online Video Lessons**  
Contact me to find out more...

Music Tuition for all ages with  
**[www.colinbaileymusic.co.uk](http://www.colinbaileymusic.co.uk)**  
**[info@ckmservices.co.uk](mailto:info@ckmservices.co.uk)**  
**07711 211169**



**LEYBURN ARTS & COMMUNITY CENTRE**  
 Tickets & Info: **01969 624510** [leyburnartscentre.com](http://leyburnartscentre.com)



(£6, or 60+/U14 £5)

**FRI 6 MAY** 6pm **Belfast** (12A) 1hr 38m  
**FRI 13 MAY** 6pm **Master Cheng** (PG) 1hr 53m  
**FRI 20 MAY** 6pm **Ali & Ava** (15) 1hr 34m  
**FRI 27 MAY** 6pm **The Queen (2006)** (12) 1hr 39m

**OTHER EVENTS**

**SUN 8 MAY** 4pm **Northern Ballet: Merlin** £12

Live event cinema. Filmed live at Leeds Grand Theatre.

**WED 18 MAY** 7pm **Dance Exhibition & Ceilidh: 6 Feet, 3 Shoes** £8 / £4  
 Fusion of fun, rhythm, emotion & magic. Note, the venue is Wensleydale Rugby Club.

**THU 26 MAY** 7pm **Straight Line Crazy** £12

Live event cinema, with Ralph Fiennes. Live broadcast from London's Bridge Theatre.

**SAT & SUN 28 & 29 MAY** **The Queen's Platinum Jubilee Celebrations**

A Festival of Performing Arts: Dancing Exhibitions, Live Drama, Live Music, Pop Choir, Afternoon Tea Party and more, see our website for details.

Please Book Tickets in Advance. Call us Mon-Fri 1-4pm

**Sykes House in Askrigg**  
**Grocery Shop, Tea Room and B&B**

Shop Open 7 days a week  
 Tearoom open Tuesday-Sunday, .  
 Enquire for group bookings  
 B&B bookings at  
[www.sykeshouse.co.uk](http://www.sykeshouse.co.uk)  
**01969 650535**

**Advertising**

**Boxed adverts: £6, £12, £18**  
**(dependent on size)**

There is a big reduction for six issues or more, so for six issues the totals are:  
**£25, £50 or £75**

**Greetings etc. £2**  
**What's ons (non-commercial) are free**

**Contact for adverts:**  
**Barry Cruickshanks**  
**01969 667458**  
**[uwnlinput@gmail.com](mailto:uwnlinput@gmail.com)**

*Whilst we try to ensure that all information is correct we cannot be held legally responsible for omissions or inaccuracies in articles, adverts or listings, or for any inconvenience caused. Views expressed in articles are the sole responsibility of the person by-lined. Articles by committee members carry just their initials. We appreciate being asked before any part of the Newsletter is reproduced.*

**Postal Subscriptions**

If you would like to receive the Newsletter by post every month the cost is £14 per annum. Please pay by BACS (**Account 41055771, sort code 40-23-23**) and send your full address details to [uwnlinput@gmail.com](mailto:uwnlinput@gmail.com). Or send a cheque for this amount (made out to the Upper Wensleydale Newsletter) plus your details to Janet Thomson, Stone House, Thornton Rust, DL8 3AW.

**Published by**

The Upper Wensleydale Newsletter  
 Lilac House, The Holme, Hawes, DL8 3QR  
**01969 667458**

Email for submission of articles, what's ons, letters etc.: [uwnlinput@gmail.com](mailto:uwnlinput@gmail.com)

Newsletters on line, simply search on "Upper Wensleydale Newsletter"  
 Archive hard copies back to 1995 are in the Dales Countryside Museum resources room.

**Editors:** Barry Cruickshanks,  
 Kevin Davis,

**Committee:** Malcolm Carruthers, Karen Jones,  
 Alastair Macintosh, Neil Piper, Karen Prudden,  
 Janet W. Thomson (Treasurer),

Postal distribution: Karen Prudden

**Founded in 1995**  
**by the late Alan S. Watkinson**