

THE UPPER WENSLEYDALE NEWSLETTER

Issue 320

June 2025

**Donation please:
50p suggested**



Covering Upper Wensleydale from Wensley to Garsdale Head plus Walden
and Bishopdale,
Swaledale from Keld to Gunnerside plus Cowgill in Upper Dentdale.

Guest Editorial

When we go for a walk round this beautiful dale it is only too easy to chat and miss what is under our feet, what you've passed and what's over your head looking down at you.

When I started to make a list of the wonderful things I've seen, I was stunned by the diversity here. I'm sure that there are other people who have seen more than I but, well I'm the one who's writing!

One of the first things we saw was a furry rear end disappearing into the undergrowth on the way up to Mill Gill in Askrigg. As it went it turned its head slightly and we saw it was an otter. One of the older residents here, an acknowledged wildlife expert, later confirmed this.

Later in the year I was swimming in the Ure, casually floating downstream towards the rocks a couple of feet away from a group of oyster catchers. Because only my head was visible they didn't seem scared and I was treated to a close-up of these beautiful birds. The same year I heard the oscillating boom of snipe diving down from above me. If you've never heard it, it's an unnerving sound made by its wings as it dives. They also came for shelter into my garden when we had a bad winter. Huddled together sheltering under a large bush opposite our front door, they looked very sorry for themselves.

Swaledale provided a lovely scene of two baby owls stood in the middle of the road at night time. We stopped the car until they moved away in case another car came and hadn't noticed. Thinking of owls, we actually saw a barn owl framed in the window of a barn looking for all the world like it had been put there. We also had a barn owl settle on our roof near the chimney. When he started to hoot it was amplified down the chimney and very loud. We went outside and he looked at us as if to say "alright, I'll move on", flapped his huge wings and disappeared into the night.

Another encounter with an owl was with a little owl which had somehow managed to go down the chimney of an elderly lady and flap soot everywhere. She had put it into a box and come down to the shop where I was working to relate her tale of woe. A lovely man cleaned up the mess for her and my good friend took the boxed owl to the vet who cleaned it up and released it back into the wild after a week.

I've been spat at by a baby weasel, caught a polecat in a humane trap in my field, seen deer vault over walls as easily as breathing and altogether seen and heard far too much mating of hedgehogs I've got a pair of red-legged partridges pecking at my spring flowers and occasionally a hummingbird moth comes into my garden. These are really incredible creatures. Very large and easily recognisable, they could be mistaken for hummingbirds. We've come to like beeflies which are flies but resemble bees in their buzz, proboscis and furry body and totally harmless.

One of our trips to the 'Wensleydale Lido' caught us looking down into the water by the rocks only to see a crayfish! Only this crayfish was munching the skeleton of another crayfish benefitting no doubt from an intake of calcium from the body.

I have recently acquired a microscope and this has opened a whole new world. On the first effort I captured a Tardigrade which Wikipedia describes as 'a phylum of eight-legged segmented micro-animals.' They can survive in space, radiation and extreme temperatures - and my microscope. Pond water stirred a bit and captured in a jam-jar provides numerable exciting action shots. Even without looking through a microscope it provides a fascinating soap opera of water lice, leeches and phantom midge larvae. When magnified these creatures take on a grotesque persona. From being terrified of spiders I now welcome them as gifts from friends, the bigger the better. Flies are more welcome than before and the carpet moths that ate large swathes of the lounge carpet look rather cute.

Once we've seen all the crayfish, polecats, snipe we go and look at the scenery at different times of the year.

In the wintertime with a hard frost you can see not only the huge icicles that form on porches and garages but turn waterfalls into static scenes to marvel at. Great sheets of ice cover the river through which the moving water might be seen. Spiders' webs are of exquisite beauty when covered in a thick rimy frost decorating the trees and gates. Sloping fields suddenly hold potential to become the scene of fun providing hours of sledging and snowboarding, so long as it's the right kind of snow. Then in a long dry summer all the water evaporates and it's sometimes possible to walk up the dry riverbed that

just a few months ago gave you ice and freezing water.

Not forgetting to look up every now and then. Look out for shooting stars which are quite numerous and, more reliably, the International Space Station comes over regularly. There are Apps available that show what date, what time and what direction the ISS will travel in, which makes it worthwhile to look up and watch it travelling from one side of the horizon to the next. The Station is easy to spot as it is a constant light and travels faster than any aeroplane. See it and wonder what the astronauts are all doing. This world is full of wonder, which brings me to my final wondering.

‘Ants are found almost everywhere on Earth, with the exception of Antarctica, the high Arctic and a few islands’ according to Wikipedia so why are there none in my garden or my field? I’m not complaining, I don’t want any but maybe it would be a good idea to know! Maybe Wikipedia hasn’t come across Askrigg and Wensleydale yet.

Rachel Dechezeaux



Amy Cockett
Vocals

Join Amy and Mal
for an evening of
Songs from the Shows
(also feat. Rev. Dave Clark)



Mal Carruthers
Keyboard

MUSICALS

FOR A MIDSUMMER'S EVENING

Saturday 21st June, 7pm St Margaret's, Hawes

Entrance is free with retiring donations towards the Organ Restoration fund

This event is supported by J. BLADES & SONS

Submission of articles

Please note that all submissions should comply with current copyright legislation. If submitted articles are not the original work of the person submitting them, then all relevant permission should be sought and granted for reproduction.

**DEADLINE FOR COPY FOR THE
NEXT ISSUE IS
TUESDAY JUNE 24th
PUBLISHED ON JULY 2nd**



Eunice the Ewe

Last month I was hiding in the Precious Pals advert on page 16. Only two correct entries and the lucky winner of the £10 prize is Leyton Parish of Hawes.
Where am I this month? To enter for the £10 prize, please include your postal address if replying by email.

Exhibition of the Talents

We would like to invite you to take part in an Exhibition of the Talents in Bainbridge Friends Meeting House on **June 14th and 15th** which is Father’s Day and the Beamish Heritage Car Rally in Bainbridge.
We are excited to have you showcasing your talents between **11.30am and 4.30pm** on both days, along with local school children’s exhibits.

Please bring contributions on **Wednesday, June 12th and Thursday 13th**, between **noon and 4.00pm** or phone **Gwen Clark** on **01969 667411** to try to arrange collection.

The accuracy, appropriateness or legitimacy of any product or service advertised in this publication is the sole responsibility of the advertiser and not of the Upper Wensleydale Newsletter.

In This Issue

Page

Guest Editorial	2
Competition	4
Penhill Benefice Services	6
Out West	8
Heavens Above	9
Hawes Primary School News	10
George’s Garden Update	11
Putting Villages on the Map	14
What’s On	20
Blueboxt (Inc. Wensleydale Community Arts Festival)	21
DCM News	22
Upper Wensleydale Benefice Services	28
Mystery Picture	31

June Competition

Rollover £100 prize!

Below are clues to the names of capital cities around the world.

1. It's just more muddled (4)
2. The post got mixed up (4)
3. A cutting tool for armed conflict (6)
4. Royal weight (8)
5. A recent delicatessen? (3,5)
6. A result in a campanologist exam? (8)
7. Increasin' by 100% (6)
8. Not a woman (5)
9. Sounds like the place where old vehicles are buried (8)
10. Is this the way to a coastal inlet? (6)
11. Put father in a paper receptacle (7)
12. Reserve a peaceful break (9)
13. Sounds like asking if Mary's animal is not good (9)
14. A badly behaved child is before molten rock (10)
15. Do you know the way to here? (3,4)
16. A male became more sick (7, can be 6)
17. Sounds like an annoying person was jeered (8)
18. Goa saint unravels the answer (8)
19. The most commonly used letter in English - 3 times and it has none! (7)
20. Mr Laurel is in the roadside assistance company (6)

Please send in your answers to arrive by **Tuesday, June 24th**. Remember to include the details of your nominated charity which will receive the £100 prize should you win.

Wensleydale Arts Society

The Princes in the Tower – The Missing

Princes Project

Tuesday, June 24, - 2.00pm.

The Garden Rooms, Leyburn

Steve Ward

Decorating and Woodwork

Mobile 07964 931461

Email :- stevenwardwensleydale@gmail.com

May Competition Answers

- | | |
|------------------|------------------|
| 1. Dent | 9. Castle Bolton |
| 2. Reeth | 10. Kettlewell |
| 3. Gunnerside | 11. Cam End |
| 4. Newbiggin | 12. Clapham |
| 5. Cray | 13. Deepdale |
| 6. Oughtershaw | 14. Blea Moor |
| 7. Gearstones | 15. Marsett |
| 8. Thornton Rust | |

Last month's competition must have proved particularly difficult as there were no correct entries received so the prize for the June Competition is raised to £100.

Firewood

Seasoned hardwood logs

Tel: 01969 662692

Mob: 07970 629227

EFFICIENT HEAT

**OIL BOILERS SERVICED
AND REPAIRED**

Contact Nick

07729 105466 / 01969 667847

SANDERSON & CO.

FUNERAL DIRECTORS

A complete and caring funeral service
provided by an independent
family business established in 1879.



For personal and
dignified attention
in time of need
please contact

Richard Sanderson

Leyburn Business Park DL8 5QA

Tel: 01969 623143 (24hrs)

Mobile: 07710 652348

Email: sandersonandcoleyburn@gmail.com

We offer Golden Charter Pre-payment Funeral
Plans Please ask for further (written) details.

North Yorkshire Open Studios

**June 7th, 8th, 14th and 15th,
10.00am to 5.00pm.**

An annual event enabling artists and makers to open their studios, meet, promote and sell their work direct to the public. With studios located across the county, visitors have the opportunity to visit unique and varied artist venues. Open studios in the local area are:

Hannah Scully - Duerley Farm, Gayle, Hawes, DL8 3SG. Hannah is an artist based in the North of England. Her practice explores printmaking and sculpture. She is passionate about working with low impact and recycled materials as well as found objects.

Rachel Morrell - Whitfield, Helm, Askrigg, DL8 3JF. Rachel is inspired by the scars, desolate moorland, coastline, ruins and industrial remains of North Yorkshire. She uses oil, acrylics and textiles to suggest an impression of the landscape and the many layers in her work are representative of the strata of its history.

Julie Edwardson - Yore Mill Craft Shop and Gallery, Church Bank Aysgarth, DL8 3SR. Julie is fascinated by the effects of light through the trees and reflecting off water. She records memories and experiences of being immersed in the landscape.

For further details, see NYOS.org.uk.

Drop-off points and contacts

For news, articles, reports, letters, What's On dates, competition entries, suggestions and comments:- All 01969 numbers unless stated.

Hawes:	Community Office	667400
Bainbridge:	Sylvia Crookes, 3, Bainside	650525
Askrigg:	Sykes Shop,	650535
Carperby:	Anthony Abraham Hall Garth	663243
West Burton:	Nadine Bell, Margarets Cottage	663559
Aysgarth:	Hamilton's Tearoom	663423
Redmire:	Kevin Davis Westholme	624165
Thoralby:	Neil Piper	663747
West Witton	Christine Barker, Chestnut Garth	624934
Preston and Castle Bolton	Alastair McLachlan	07817 709167

Events at Hawes Junction Chapel

Mount Zion, Garsdale Head, LA10 5PT

Sunday, June 8th

Walk in Upper Swaledale. Meet at Hoggarth's Bridge (above Keld) at **1.30pm**.

Walking up to Smithy Holme, then passing Anty John's and up to Ravenseat, return via Harker's House. All welcome.

Sunday June 22nd

East Witton Male Voice Choir. **6.30pm**.

Light refreshments will be served at the close.



We have had a very busy half term after the Easter holidays. We have had some new children settling in and some of our 2-year-olds have made the transition from our Ducklings room into the Sunshines room. All of this has gone well and it hasn't taken long for everyone to settle in.

Our theme this month has been based around dinosaurs. The role play area was transformed into a swamp dinosaur area with costumes and masks for the children to wear. There was also a volcano in there for the dinosaurs to wander around hoping it was not going to erupt.

We have played our dinosaur dominoes and our new dinosaur shape game. The children also enjoyed trying to break our dinosaur eggs to hatch out the baby dinosaur and then they watched them melt outside in the sunshine.

Due to the wonderful weather we have been enjoying, we have been able to get outside a lot to play. The children have loved water play and have been paying special attention to watering our flowers and strawberries and watching them grow.

We will be holding an open morning at Dalesplay on **Saturday, July 5th from 10.00am to noon**. Everyone is welcome to drop by to have a look around and see what we have to offer and the things that we do at Dalesplay.

If you are looking for childcare, funded or non-funded, please call Dalesplay on **01969 667789** or email dalesplay1@btconnect.com.

Penhill Benefice

Church Services: In case of bad weather, please check our website for updates at penhillbenefice.co.uk/services.

There will be a Telephone Service each **Sunday at 9.30am**. Dial **0333 0110 946** and enter room number 61337190# and PIN 7450# (local charges apply).

Sunday, June 1st

9.30am Holy Communion,
St. Margaret's, Preston under Scar.

9.30am Morning Prayer, St. Mary's,
Redmire.

11.00am Holy Communion,
St. Andrew's, Aysgarth.

11.00am Holy Communion,
St. Bartholomew's, West Witton.

Sunday, June 8th Pentecost

9.30am Holy Communion Penhill Together
Service, St. Margaret's, Preston under
Scar.

Sunday, June 15th Trinity Sunday

9.30am Holy Communion,
Holy Trinity, Wensley.

9.30am Holy Communion,
St. Mary's, Redmire.

11.00am Holy Communion,
St. Andrew's, Aysgarth.

11.00am Morning Prayer, St. Bartholomew's,
West Witton.

Dales Charity



Wednesday 11th June 2025

Hawes Market Hall

Entry from 7.00 pm, for

Eyes down at 7.30pm

Tea, coffee available during the break

In Aid of Hawes In Bloom

Sunday, June 22nd

9.30am Holy Communion,
St. Bartholomew's, West Witton.

11.00am Morning Prayer with a baptism,
St. Andrew's, Aysgarth.

4.00pm Evening Prayer,
Thornton Rust Mission Room.

Sunday, June 29th

11.00am Holy Communion Benefice,
St. Andrew's, Aysgarth.

June Mid-Week Services:

Thursday, 5th and 19th at 9.30am.

Holy Communion, at St. Bartholomew's,
West Witton.

Church Coffee Morning: **Wednesday, June 4th, 10.30am to noon** at Redmire Village Hall.

Church Afternoon Tea: **Wednesday, June 18th from 2.00pm to 4.00pm** at Redmire Village Hall.

MICHAEL MOORE and SON BUILDER AND PLASTERER Family Business Est 1906

Alterations, pointing, stonework,
Roof work, garden patios, paths,
plastering, insulated plaster
boarding,
Over-skimming Artex walls and
ceilings, tiling walls and floors,
underfloor heating, PVC sash
windows.

**Tel: 01969 667045
Mob: 07968 684942**

Hawes DL8 3NS

**ANDREW
HAWKINS BUILDING
CONSTRUCTION CONTRACTORS**

NEW BUILDS | EXTENSIONS
BARN CONVERSIONS | ROOFING & GROUNDWORKS
APPROVED DAMP PROOFING & REMEDIAL
TREATMENT SPECIALISTS

Tel: 0800 002 9779

Email: hawkinsbuilder@hotmail.com

Unit 5 Hamby Business Park, Hamby Road, Leyburn, North Yorkshire, DL8 5QA

Bainbridge WI

So, here we are - half way through another year, but not worn out yet!

As always, we have been very busy! The 'Lunch Clubbers' got a late pass to enjoy dinner rather than lunch at The Bay Horse in Ravensworth. It was a glorious evening for a drive and we all thought the village looked lovely in the evening sun. We settled into the restaurant and then enjoyed a delicious meal, which we actually struggled to fault! Some ladies managed to squeeze in three courses, but most of us only managed two, with those 'in the know' saving space for the amazing puddings!

The keen gardeners have been to Marsett to look around the gardens of some of our members. They are now looking forward to visits to Birstwith Hall Gardens near Harrogate and 'Just the Job' community gardens in Richmond. It is always good to get ideas for our own gardens!

The Theatre Group are off to see 'Switcheroo' and 'The Housewife at War' at The Georgian Theatre Royal in Richmond in June and will be planning further visits for the next few months.

Our intrepid walkers have been out and about too but, just for a change, the problem this year isn't too much rain, but not enough! The ground is very hard and cracked in many places and a bit of rain wouldn't go amiss! Still, at least they can enjoy walking without loads of layers and waterproofs!

We had 35 guests at the last Soup and Sweet lunch of the season who all enjoyed catching up with friends over a delicious homemade soup and pudding. It was actually a 'sell-out' with everything consumed!

Hopefully, we will have a programme of dates for lunches during the autumn/winter months but this is very much dependent on having sufficient volunteers to help. Look out for further information in due course.

Our May meeting was linked to the WI Resolution this year which is to try and encourage people to learn how to do CPR in the hope that lives can be saved by bystanders in our communities. Consequently, we had a visit from Phil of the Yorkshire Ambulance Service who came to talk to us about CPR and provide some training. It was scary to hear the statistics of how many cardiac arrests happen each year and just how low the survival rates are for those

who have one outside of a hospital. So many more lives could be saved if everyone knew how to carry out vital CPR until an ambulance can arrive. So, we found ourselves on our knees practising CPR on some dummies and realised just how physically draining this is! Amazingly, most of us managed some sort of effort which we were reassured would be much better than doing nothing!

As usual, we will be catering for the lunch stop of the Beamish Reliability Rally on Bainbridge Village Green on **Sunday, June 15th**. Again, we would like some good weather please!! Do come and visit us for delicious sandwiches and cakes whilst you check out the fascinating old cars. We are usually there between about **11.30am and 2.00pm**.

Our June meeting will be held at Bainbridge Village Hall on **Thursday, June 19th**, when we will be doing something a bit different. We are hosting our 'twin' WI - Killinghall, near Harrogate. The meeting will start at Bainbridge Village Hall at **1.00pm** with light refreshments and a talk by botanical expert and RHSS Gold Medal winner Martin Allen. This is followed by a guided walk in the meadows around Askrigg before returning to Bainbridge for Afternoon Tea. Fingers crossed for good weather!

If you would like more information about our busy and friendly WI or any of our events and activities, please contact our President, **Sue Stokes** on **07816 955723**. We would be delighted to welcome you and can assure you of a warm welcome, lots of fun and plenty of opportunities.



WOODCRAFT STUDIO and TIMBER SERVICES

formerly Gayle Mill Trust

Gates, posts and fencing to suit all your needs.
Timber sales of larch and local hardwoods cut
and delivered for your own project.

Mobile sawmill to cut your own trees into
planks or beams.

Seasonal firewood delivered throughout the
Dales

Ring **07967 844636** for further details

Out West

What an amazing discovery we made last week; out for a ride in beautiful rural Lancashire, just north of Blackburn and Bury (local pronunciation), we came across the most incredibly progressive garden centre. The omens were good as we pulled into an immaculate car park, with spick and span flower beds softening and separating parking bays, all set against a background of taller shrubs and white bark birch trees. How tragic that I get enthused by parking space, I really ought to ditch the 'net and get out more.

Right, on through reception, heroically resisting the pull of coffee and cake at the bright, cheerful cafe (later, later!) and into an absolutely stuffed shrub and perennial area, all SO healthy and, very importantly, clearly priced – this was heaven. I was sorely tempted, first off, by vast banks of scented azaleas, gleaming camellias and wow, the most show stopping viburnum 'farreri', all billowing white and scented. 'Let's not get carried away' I muttered to myself – they're all a bit soft for where I live and some hate limey soil, so we'll keep tight hold of that wallet for now and, phew, would you look at that – aren't the larger conifers getting fantastically expensive? Either that or I'm becoming my dad, who wouldn't have it that we'd pay over '10 bob' for a mug of coffee; £85 for a potted silver fir would have him chuntering. Finally, success as I come across a very appealing golden yew, taxus baccata 'semperparva', pot bound so reduced, and what a cheapskate I am, but after its roots are liberated into open ground, it should flourish in a shady corner, reach 10ft and see me out, gulp.

Next up are rows of perennials and annuals colourfully rioting – spend begets spend so I'll gather up a few fancy leaved geraniums for the borders; 'Henry Cox', gold on brown and a real sweetie, and 'Happy Thought', emerald green with a white splash. Back home they will oversee a rabble of wild thyme, lobelia and carpeting campanula and then gracefully retire to a cosy bedroom window for a welcome winter break.

Best of all, and top marks for innovation, was the next section, where separately themed borders i.e. dry, damp, shade loving were laid out and priced...by the square yard – short of pure merlot coming out of my cold-water tap, that's the best development ever; I was goggle

eyed with admiration. So, what you did was make your choice on what would suit your location and then order – simple. The garden centre would then come out with the spec. and just lay out your chosen scheme – a true 'off the peg' garden.

Thankfully my garden's established so on to the checkout. They are savvy though, aren't they? Just like a supermarket, at the tills you'll find the reductions, odds and ends, the usual impulse buy stuff. Well, moth to flame I'm afraid – victim here couldn't resist a couple of tiny hollies on the cheap: 'Blue Maid' and 'White Cream' will both eventually reach 6 ft so good choices, although maybe I will have to watch for wild shoots at the base if they are grafts (must check) and cut them out before any reversion.

Well-run garden centres are a pleasure to walk round – I'm surprised there isn't an entrance fee.... you plunder ideas, splurge and reward yourself with a tasty treat from the cafe. My special diet demands regular coffee and bun intake but that's something I'm prepared to bravely endure.

Fatefully, we encountered a small houseplant section on the way out, where I rather overhastily picked up a showy 'sunny star' croton. I'm a sucker for the Codiaeum's gold/green foliage so couldn't resist this charmer. Back to that adorable carpark and loading up where I took a closer look at the label... 'Essential to mist regularly, moisten compost with warm water, wash leaves occasionally and avoid temperatures below 13 degrees C, toxic' etc, etc. Hmm, this is not a plant, it's a spoiled brat.

Ed Gardener

D MOORE & M BLACKHURST

BUILDERS



**GENERAL
MAINTENANCE**

*All types of building work undertaken
25 years' experience ~ Free Estimates*

07772 284602 ~ 07975 897715

3 Woodburn, Hawes. 01969 667505

Heavens Above

If you're out and about late on in the evening on **June 10th** take a look at the Moon. It's the lowest Full Moon for nearly 19 years and won't be as low as this again until 2034. Astronomers call this rare event a Major Lunar Standstill as the positions of moonrise and moonset are also at their closest together for some days around **June 10th**. You might also find the Moon appears to look a good deal larger than usual due to the well known optical illusion which makes it appear much bigger when it's close to the horizon than when it's higher up in the sky. As far as I know nobody has come up with a really satisfactory explanation for this effect. Can you?

Unlike the Moon, the Sun reaches its highest point in the sky this month, at the summer solstice on **June 21st** when we get the most daylight hours and the shortest night. Not the best time of the year for a spot of stargazing unless you're prepared to stay out that little bit later. If you do venture out, you'll find the southern sky is now dominated by golden-orange Arcturus, the main star in the kite-shaped constellation of Bootes the Herdsman who was said to have invented the plough according to the old Greek myths. Arcturus is the fourth brightest star in the sky, a Red Giant much bigger and about 200 times more luminous than our own Sun. Its name comes from the Greek for 'The Guardian of the Bears' as it follows the constellations Ursa Major and Minor – The Greater and Lesser Bears around the sky.

High in the north-east you'll find the famous Summer Triangle, a large asterism or star-pattern formed by Vega, Deneb, and Altair, the three brightest stars in the constellations of Lyra (The Lyre), Cygnus (The Swan) and Aquila the

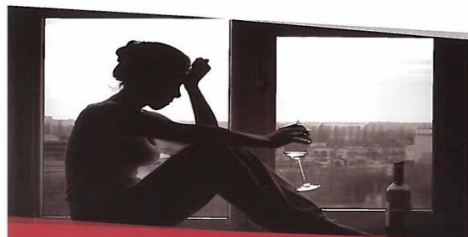
Eagle. The Summer Milky Way runs through this part of the sky so it's well worth exploring with binoculars. You'll get some spectacular views if you slowly sweep up from the southern horizon to where the Milky Way splits in the constellation of Cygnus the Swan (often called the Northern Cross due to its large cruciform shape).

There's a scarcity of bright planets once again in the evening sky this month apart from Mars which is travelling through the constellation of Leo at present. On **June 17th** it lies extremely close to Leo's brightest star, Regulus. A striking sight in binoculars as the redness of Mars contrasts strongly with Regulus' blue-white hue.

Have clear skies though we've had plenty of these recently.

Al Bireo

IS ALCOHOL COSTING YOU MORE THAN MONEY?



Alcoholics Anonymous

0800 917 7650

www.alcoholics-anonymous.org.uk

Email: help@aamail.org

SCAN HERE FOR
LOCAL MEETINGS



ALL ENQUIRIES ARE TREATED IN THE STRICTEST CONFIDENCE

Solid Joinery Solutions

All aspects of joinery and carpentry undertaken.

Bespoke joinery solutions made to your requirements.

Covering all Yorkshire Dales and surrounding areas

Contact Paul for a free, no obligation quote on **07980 167987**

Email: enquiries@solidjoinerysolutions.co.uk

Web: www.solidjoinerysolutions.co.uk



Hamilton's Tea Room At Yoredale House,

Aysgarth

Licensed Tea Room

HOMEMADE FOOD,

Light Lunches, Clotted Cream Teas

Open Feb-Nov, 10.30am - 4.30pm

Closed Mondays and Tuesdays

Tel: 01969 663423

info@yoredalehouse.co.uk

Hawes Primary School News

EYFS: Our EYFS children have been enjoying their outdoor learning area since Easter after the scaffolding was removed. All the children are talking excitedly about what they experience in the world around them. They are sharing their ideas and playing happily with others. At Hawes Primary School we have both Reception and Nursery children in EYFS developing their learning successfully together.



Stem Day - Settlebeck: Our Year 4 and 5 children travelled to Settlebeck School for a STEM (Science Technology Engineering and Maths) day. The children were split into groups and worked well with children from four other schools that were attending the day. They all worked hard and enjoyed finding fingerprints as clues, an escape room experience, exploring the planets and they also made cars.

Gardening Club: Our successful gardening club is well under way this term with nearly half of the school joining in every Monday after school. They aim to work on improving the school grounds at the same time as learning new

knowledge about gardening, plants, and wildlife. They have been looking at birds and setting up a bird station in school. We would like to thank Mick Rhodes and Ellie Bates for volunteering to run this club for the children.

Retirement News: At half-term we said goodbye to Dawn Alderson our school administrator as she retired from school. Dawn has worked at Hawes for over 25 years and has been a crucial part of our team supporting children, parents, staff, governors and the wider school community. We are all really going to miss her but want to wish her well in her retirement, spending precious time with her family and travelling.

Please keep up to date with our school news via our website <https://www.hawesprimary.co.uk/> or contact school via email – hawes@ycatschools.co.uk. We also have a school Facebook page where you can view our learning in school.

**SCOTTS
HALL
& BIRTLES**
SOLICITORS

**For all your legal requirements
offering a full range of services.
Hawes DL8 3QL, Tel 667171
and at Leyburn, Golden Lion Yard,
DL8 5AS, Tel 01969 625526.
email; info@shblegal.co.uk**

**Regulated and authorised by the
Solicitors Regulation Authority**



**Friday 13th June 2025
ASKRIGG VILLAGE HALL**

Entry from 7.00 pm, for
Eyes down at 7.30pm

*Tea, coffee available during the break
In Aid of Yorebridge Sport & Leisure Centre*

**Portable Appliance
Testing (PAT)**

Hawes DL8 3NT

**Certificates & Reports supplied on
each appliance tested.
Please call for free quote and advice**

**Wayne Webster 01969 666020
or 07766 640905**

George's Garden Hawes - An Update

There is good news sprinkled with bad news! Our D-Day was the April 23rd when Richard Noble arrived with 104 plants with a value of £785. Richard has a gold star with his plant wholesaler so they were excellent value! Shannon at Fern and Feathers kindly donated a tray of lavender. The George's Garden team comprising Gwen, Lily, Ian, Maureen, Lyn, Robin and a press ganged Bob went to work planting with Richard setting the plants out. Three hours of very hard work later the pub called and we left four to plant another day. The next day we only had three to plant as one went AWOL. Over the course of the next week another two were dug up.

These thefts were very disappointing. They were reported to the police and we would like to thank our PCSO's Tracie and Don for taking this seriously. We posted on Facebook and we would like to thank everyone for their positive

responses. We became rising contributors on Facebook which we otherwise barely use! We even raised a further £60 in kind donations and thoughtful Shannon at Fern and Feathers provided a further three plants to make up for our losses.

A final heart felt thank you to the Chippy at Hawes. Absolutely no rain since we planted and we would be looking at very limp and dead plants if it wasn't for them. They have let us tap into their water supply and we have been watering three times a week!!

Overall, our faith in humanity has been restored! A big thank you!

George's Garden Team

STURDY TRAVEL

INDEPENDENT TRAVEL SPECIALISTS

Now at Toll House (Next to Spar)

Market Place, Hawes DL8 5QX

Also at 1, Golden Yard, Market Place,
Leyburn, DL8 5AS

For all your travel needs, home and
abroad

Call: 01677 422826

Email: robert@bakewelltravel.co.uk

Part of Bakewell Travel

ABTA No. P8596

Alex Kravchenko

BSc (Hons) MChS

Chiropodist / Podiatrist

Member of the Health Professions Council

Practising at

Yorkshire Foot Clinics

**25, Frenchgate, Richmond DL10 4NZ
Bishop Auckland/ Hawes 667449**

Clinic Tel 01748 850020

Email: yorkshirefootclinics@yahoo.com



Upper Wensleydale Property Services

**All aspects of domestic plumbing
and heating work undertaken
Bathroom supply and fitting, wet
room installation and tiling
Heating systems, and oil boilers
and tank installations**

**Please contact Malcolm
Grant on 07855 191466**

email: mgwensleydale@gmail.com

McGARRY & Co. Solicitors

**From small personal
matters to larger
commercial transactions,
for personal advice in an
impersonal world.**

**Market Place, Hawes,
North Yorkshire DL8 3QS
Telephone No 01969 666290
or email
office@mbmccgarry.co.uk**

**Farm and Home visits by
appointment**

Regulated by The Solicitors Regulation Authority
No. 553987

News From Sycamore Hall

How on earth have we got half way through the year so quickly? Time just flies when you are having fun!

We have been busy again, filling our days with all sorts of opportunities. We had a wonderful afternoon of 'Songs From the Musicals' when Amy Cockett and Malcolm Carruthers came along to give us a preview of their summer show taking place in Hawes. What a wonderful treat that was for us! They are both very talented and we enjoyed the chance to singalong! Get your tickets soon as we can highly recommend this show!

We were also able to celebrate the 80th Anniversary of VE Day when Poppy and Debs organised a film and food afternoon, marking this big day in our history. Poppy even dressed for the occasion!

As this Newsletter goes to print, we are having a Coffee Morning to raise money for the Bainbridge Christmas Lights Appeal. Hopefully, there will be a good crowd there to enjoy the refreshments and raise money to ensure that Bainbridge is once again a wonderful twinkly sight for the festive period.

We are hoping that the wonderful weather we have been enjoying doesn't turn out to be our summer! It has been great to be able to sit outside and soak up the rays, enjoying the fresh air and the birdsong. However, we would really like to think that there will be another good long spell of glorious weather over the summer months - we have everything crossed!

Plans are being put together for future events and activities but we haven't yet managed to firm up dates and details, so please check out local posters and our Facebook page so that you don't miss anything!

Our regular weekly events are as follows:-

Mondays at 2.00pm - 'Knit & Natter' and Dominoes

Tuesdays at 10.30am - Bingo or Quiz

Thursdays at 10.30am - Coffee Morning

Fridays at 11.00am - Gentle Seated Exercise with Janet Seymour

Monthly services take place with Revd Dave Clark and the local Methodist Preachers. Please check for dates each month.

You are very welcome to join us for any of these events and activities. We love to meet new

faces as well as familiar ones and can offer a warm welcome.

Don't forget to put your name on our mailing list for the new Community Cinema - forms available from Karen or Sonja or email sycamorecountrystore1@outlook.com.

Our independent businesses are open, as usual. Sycamore Country Store is open **Monday to Friday, 9.00am to 1.00pm** for your everyday shopping needs with regular deliveries of fresh milk, eggs, bread, pasties, pies and cakes. Come and visit us to see our range!

Our restaurant is open for lunch **Tuesday to Friday and Sunday**. Perhaps you have seen information on Facebook and boards locally but why not come along and try it for yourself?

Maisy's Little Gift Shop is open at Sonja's Hair Salon (generally **Thursday, Friday and Saturday**). Call in to see the range of toiletries, make-up, jewellery, candles, scarves, cushions and other gifts available. There is an extensive range of greetings cards, including some with local scenes. You could also make an appointment to have your hair done while you are there!

The Post Office is with us on **Mondays and Wednesdays** between **9.00am and 11.00am** for your posting and banking needs, and the library is open every day from **8.30am to 7.00pm**. Come and pay us a visit - you don't know what you are missing!

If you have any queries or want to discuss the availability of apartments, contact the Manager, **Nicky Cooper**, on **0370-192-4055**.

**AYSGARTH
FALLS
HOTEL**

**PALMERS
RESTAURANT**

**Now serving Afternoon Tea by advanced booking
Wednesday - Saturday 12pm - 4pm**



Food served daily from 12pm

www.aysgarthfalls hotel.com
01969 663775

Reeth Memorial Hall

All concert details are on our website.

Friday, June 20th – The Often Herd.

Vibrant, transatlantic bluegrass style music, deeply coloured by the striking natural and industrial landscapes of Northern England. Tickets £16 (£18 at door).

Friday, July 4th – O’Hooley and Tidow

Much loved Yorkshire folk duo, famed for their close harmonies and moving, dramatic songwriting including the theme tune to hit BBC1 drama ‘Gentleman Jack’. Tickets £20 (£22 door).

Saturday, July 5th – Baldy Holly Band

Rock and Roll comes to Swaledale when YouTube sensations The Baldy Holly Band return with 1950s classics from the likes of Buddy Holly, Elvis Presley, Chuck Berry, Gene Vincent and Eddie Cochran. Tickets £16 (£18 door).

On **July 18th** a chance to dust off the flares and 70’s dresses - The Abba Girls 4 piece Band (the original Abba tribute band).

Tickets for concerts are available from Reeth PO or phone **Glen Steward 01748 884989** or visit www.reethmemorialhall.weebly.com – tickets half price under 16s. **All concerts 8.00pm** unless otherwise stated.



HAIR, NAILS AND AESTHETICS

All ladies and gents hair services

Manicures and Pedicures

I Nails Express

Thread Vein Removal

Skin Tag Removal

Tel Hawes 01969 667449

info@twistedah.com

Applegarth Couture

www.applegarthcouture.co.uk

Made to measure

Wedding, evening and daywear, tailoring and alterations.

**Contact: Rebecca Atkinson,
Aysgarth**

01969 629398 or 07521 030870

Your local family owned Coach Operator



COACH HOLIDAYS and FULL DAY EXCURSION PROGRAMME

Call 015242 41330 for our current brochures or visit our website to view up and coming Holidays and Day Trips

Email: enquiries@bibbys.co.uk

Website: www.bibbys.co.uk

DALE HEAD GARAGE

Town Head, Hawes

Tel.01969 667483

Fuel Available 24/7

D BUSHBY Joiner/Cabinet Maker

Doors, windows, staircases etc.
made to measure.

Skirtings, doors, shelves fitted and
many more odd jobs.

For a prompt and efficient service ring

**David Bushby: 01969 666048 or
07980 201579**

WANTED - SCRAP CARS AND COMMERCIALS

FREE collection from all areas.

www.scrapcarmcumbria.co.uk

07825 293099

Putting Villages on the Map

I ordered a new wheelbarrow from Hawes. When it came I helped the driver lower it from his truck. "Are you familiar with my maps?" I asked him. "No", was the reply. "The maps that show where all the houses are in each village?" "No", he insisted. "I use the 'colinday' maps. Use them every day." Then he discovered who had ordered the wheelbarrow!

It all began in 2004. The National Park had circulated their local plan. In the folder there were maps of each village with the houses and their names shown. I realised what a help it could be if we had such a map of Thornton Rust, so I copied theirs. I went on to copy all those maps. They were derived from the Ordnance Survey who gave me permission to produce such maps without payment. I put the maps on my web site and added others to them when people requested more. When I had done the maps of Wensleydale and Swaledale, an oil delivery driver asked me to do the same for his area, Wharfedale.

He told me that at one time he had been asked to deliver oil to a village near York which was quite unknown to him. There were no names on the houses and not a soul around. He had to resort to phoning, then going round all the houses finding where the phone was ringing. He rooted through all the dustbins looking for letters addressed to them. He explained that if

you delivered a package to the wrong door, neighbours would pass it on. If you filled the wrong tank with oil, boy, you were in trouble! When I had supplied maps of Wharfedale he told me I was saving him several hours per day.

On my website, colinday.co.uk, I now have (free of charge) 2762 maps showing the names of 103,069 properties. They cover the area from coast to coast, from the Scottish border to Lincolnshire. You can view the villages in Wensleydale at <https://www.colinday.co.uk/maps/Wensleydale.shtml>. They are used not only by delivery drivers, but also by GPs, clergy, district nurses, estate agents, First Responders, some ambulances etc. I have even provided maps on request to a local Fire Service. My biggest problem is getting them known by those who need them.

From time to time I am contacted by village residents requesting me to update their map, which I am always glad to do. The changes needed may range from one house changing its name to a new housing estate being built. Sometimes I am asked why I have carried out this service and not made a penny from it. My reply is that God has been so good to me I wanted to do something in return.

A young man emailed me. He had been a delivery driver for just a few months. "The first three weeks", he said, "were hell! Then I discovered your maps"

Colin Day

Tuesday Hawes Fish Market

Also door to door delivery every **Friday**. Pre-order or just turn up on a **Friday** at

Askrigg Stone Cross. **9.30am to 10.45am**

Bainbridge playground. **11.00am to 11.30am**

West Burton **12noon to 12.30pm**

Thornton Rust W.I. Hall **12.45pm to 1.00pm**

Mobile **07711 989590**

Facebook Hawesfishmarket;

Email Hawesfishmarket@gmail.com

FOR ALL YOUR SEWING NEEDS

Contact. Sheila Kearton at
Woodhall, Askrigg

Alterations and custom soft furnishings
CURTAINS, ROMAN
BLINDS, CUSHIONS
DRESSMAKING AND
REPAIRS



Tel **01969 663484 or 07800 576925**

O'REILLY

Chartered
Accountants

At O'Reilly's we provide a broad range of
accountancy and taxation services to our clients.

Our friendly and approachable team are
dedicated to delivering a high standard of
service throughout the year.

We act for many individuals and businesses
with different levels of complexities.

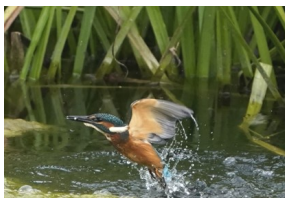
For more information visit our website at
www.o-reilly.co.uk or contact us on **01969
667428** to arrange a free initial consultation.



YDRT Rivers4Life Photography Competition

Yorkshire Dales Rivers Trust (YDRT) is running a competition to find the best photographs of Yorkshire Dales rivers and wildlife, to be included in its Rivers4Life exhibition - the name given to its new education and engagement project, funded by The National Lottery Heritage Fund, thanks to players of the National Lottery.

It is inviting you to submit your favourite photos of our beautiful rivers, streams and their wildlife taken in the catchments of the Trust which includes the rivers Swale, Ure, Nidd, Wharfe and Ouse and associated tributaries. (NB. Please do not include people in your images).



All entrants will have the chance to feature in the Rivers4Life summer exhibition taking place at the Dales Countryside Museum in Hawes from late June to early September 2026, and in a future Yorkshire Dales Rivers Trust calendar!

There are four stages to the competition, covering all the seasons. The spring season covers March to May and the deadline for entries is **June 5th, 2025**.

Please submit your competition entries at link: www.ydrt.org.uk/photography-competition/.

You can also sign up for the YDRT monthly e-news at: www.ydrt.org.uk.

Withywood Stores

West Witton



Proud to stock local produce

Fresh bread, cakes and savouries

Local milk, dairy and cold meats, fresh fruit and vegetables
Masham sausages, free range eggs, honey made in West Witton

Selection of wines, Wensleydale Brewery ales
Newspapers, magazines, stationery and greetings cards
Selection of household items. New lines added weekly.

Please support your village shop, to keep it secure for the future.

Opening: Mon-Friday 8am-6pm
Saturday 8am-6pm
Sundays 8am-12 noon

withywoodstores@mail.com

01969 326484



touching hearts, changing lives

Leyburn
Methodist Hall

Every
Wednesday
9.00am, 4.30pm
and 6.00pm

No need to book Just come along and start your journey to a slimmer you.

Call Helen for more info **07969 559998**

Better Health Massage

Mobile Therapist, 8am to 8pm, 7days
Improve overall general well being, inside and out.

Ruth Boddy MFHT, ITEC Dip. Massage
ruth@betterhealthmassage.co.uk

Fully qualified and insured

07773 781803

www.betterhealthmassage.co.uk



For All Of Your Flooring Needs!

NH Flooring in Richmond can fit quality flooring to any Houses, Apartments, Offices, Holiday Lets, Hotels, Pubs, Vans and anywhere else you want it.

We offer a complete flooring service including:

Supplying, Fitting, Screeding & Levelling,
Repairing, Uplift & Removals, Trimming,
Edge Whipping, Cladding and much more.

NH Flooring - Richmond

www.nhflooring.co.uk **01748 822834**
Unit 6 Borough Court, Borough Road, Richmond. DL10 4SX



Carpets • Laminates • Vinyls • LVT
Solid & Engineered Wood • Accessories

**FREE
QUOTES**

Music for a Summer Afternoon

in St Andrew's Church, Aysgarth

Sunday, July 13th at 3.00pm

The Richmond Chamber Orchestra play in Wensleydale for the first time, bringing a varied programme with something (and a tune) for every taste.

Elgar	Introduction & Allegro
Bach	E major violin concerto
Tchaikovsky	Andante Cantabile for solo cello
Janacek	Idyll Suite
Percy Grainger	Molly on the Shore.

Three soloists are led by the orchestra's director, international solo violinist Philippa Mo, and there is an additional mystery piece. After four sell-out concerts, they are very much looking forward to playing in perhaps the loveliest of the Dales churches. Refreshments available in the interval.



Tickets £15.00, U18 £7.50 from www.ticketsource.co.uk, by phone on 0333 666 3366, or at the door. More information at www.richmondchamberorchestra.co.uk.

Dales Charity Bingo Report

Our May bingo night was for Hawes Xmas Lights and the hall was full of players and supporters, including a group of yarn bombers from Doncaster who did their best to clean up all the prizes. Our caller for the night was Stephen Reynolds who cleverly managed to incorporate a few facts about the Xmas lights, such as it has been running 28 years and takes 26 volunteers to make it happen each year.

Hawes Xmas Lights would like to thank everyone who came out in support of the night and for their generous donations also. A total of £500 was raised.

Our next Bingo night will be in Hawes on **Wednesday, June 11th** for Hawes in Bloom and we have a second Bingo night on **Friday, June 13th** in Askrigg Village Hall for Yorebridge Sports and Leisure. – please see our adverts on pages 6 and 10.

We hope you can come and support these causes. If you would like to know more, please email us at dalescharitybingo@gmail.com.

MFW Aga & Boiler Services

Specialising in the servicing of Aga / Rayburn cookers and domestic oil boilers.

All Dales area covered

For service please contact Mike on:

Phone: 01609 779751 Mobile: 07731 349276

Precious Pals



Dog walking & pet visits

Fully Insured
DBS Checked
Pet First Aid
10 years experience

Serving Hawes and the surrounding area

www.preciouspals.co

Contact Vanessa & Sally Fawcett

Email: nessie184@gmail.com

Tel: 07443 956898

Wensleydale Concert Series

Our next concert is on **Saturday, June 14th at 7.30pm** in St Andrew's Church, Aysgarth, and features the extraordinary Jordanian-Palestinian pianist Iyad Sughayer. His exciting and varied programme includes music by Mozart, Schubert, Sibelius and Khachaturian.

Chosen as 'One to Watch' by International Piano Magazine, Iyad's debut album of music by Khachaturian was described by Gramophone as "exhilarating and delivered with perfect clarity" and "an outstanding debut" by BBC Music Magazine. Nominated as a 2022 'Rising Star' by Classic FM, Iyad was a prize-winner at the Young Classical Artists Trust international auditions in 2021.



Iyad is visiting Wensleydale after his debut recital in Bogota in Colombia, as well as a successful tour of North America, including recitals in Toronto, Vermont, Florida, California and Washington DC.

For further details and tickets online and by post, please check out our website www.wensleydaleconcertseries.co.uk. Tickets can also be bought by phone on **0333 666 3366**. If you have any questions, please call **Carol Haynes** on **01969 663026**.

Music Tuition for all ages with
www.colinbaileymusic.co.uk
07711 211169

**Drums & Percussion; Vocals;
Piano & Keyboards; Music Theory;
'Get Musical' Workshops.**

BARTLETT & ELECTRICALS

| Domestic Appliance Servicing |
| Installation |
| Electrical Services |
| Repairs |
| Sales |
| All makes and models |

www.BartlettElectricals.co.uk

Tel : 07920 401042

Email: Ben@BartlettElectricals.co.uk



**Springbank
Logs**

Seasoned Firewood Logs For Sale

Hardwood and Softwood available.
Bulk Bags, Bulk Loads and smaller
bags available, also kindling bags.
Can deliver locally – Hawes Area

01969 667916 after 5.00pm
Mobile: 07974 507825
any time; P.O.A



Registered
Heating
Business



J.Parfitt Plumbing & Heating Ltd

All aspects of domestic / commercial
plumbing and heating work undertaken

Phone: **01969 650665**

Mobile: **07882 005261**

www.parfittplumbing.co.uk

JOHN & TED DINSDALE

Builders - Roofers - Renovations - Extensions

*All aspects of property maintenance.
Fireplaces, Wood Burners supplied and fitted*

01969 667 718 ~ 07511 424 865

Leyburn Arts and Community Centre

May was a month full of all sorts of activities and June looks like being the same. We had our regular Tuesday and Friday films and also our special VE day celebrations, a screening of 'The Dam Busters' and afternoon tea and cake. There was also an 'Exhibition on Screen' focusing on Michelangelo's works.

Twangtown Paramours, the Soulful Duo from Nashville, were excellent and the Plant Fayre also a great success. For a younger audience, we screened a brand new 'Peppa Meets the Baby' Cinema Experience. Lovely to see younger cinema goers enjoying themselves!

June continues with a war themed Exploring Film about an Italian soldier escaping the war; a National Theatre Live screening of the Tennessee William's masterpiece, 'A Streetcar Named Desire' starring Gillian Anderson; regular Friday films including the acclaimed 'Mr Burton', the story of a young Richard Burton, starring Toby Jones and Lesley Manville. For good music lovers we have Edwina Hayes, back by popular demand on **June 28th**.

Our informal Digital Support continues for those with questions and topics they wish to ask about. Also the Carer's Plus coffee morning, the monthly support sessions from Citizen's Advice, Wednesday Walking sessions and Book Club. Some volunteer holiday relief is available if you have a few hours to spare. And the Community Shed is open if you wish to see what goes on there, Phone **01969 624510** for more information, see our website or sign up for our flyer.

Leyburn and District u3a

The Quirks and Pitfalls of Great War Family History Research by Steve Erskine

Friday, June 20th

at Leyburn Arts and Community Centre

This month we have a different view of family history. Steve Erskine has been involved with Richmond's Green Howards' Museum for over 20 years, initially as a volunteer, then as Assistant Curator and currently the Museum Researcher.

In 'The Quirks and Pitfalls of Great War Family History Research' – anonymised to protect the innocent – he will describe unexpected and interesting stories which have come to light during his researches.

Seemingly 'run of the mill' enquiries led to helping in identifying remains found on the Somme in 2017; questions about parentage, and the legacy of dubious medical conditions.

Steve is also an experienced battlefield guide after conducting tours of the Dunkirk, Normandy, the Somme and Ypres battlefields. He is currently working on a regimental perspective of the Sicily landings and how they influenced the later Green Howard landings on Gold Beach on June 6th, 1944.

Doors open at **10.00am for 10.30am** at Leyburn Arts and Community Centre, Leyburn. Visitors and new members are always welcome. For details contact the membership secretary at www.leyburn.u3a.site.uk.

Arena Physio and sports rehab.

physiotherapy & sports rehabilitation clinic

Assessment, treatment and rehabilitation of musculoskeletal pain, injury and dysfunction.

Appointments available at:

Carperby Football Club, Carperby,
Leyburn, North Yorkshire. DL8 4DJ.

or

Darlington Mowden Park RFC
Darlington Arena, Neasham Road,
Darlington. DL2 1DL

Tel: 01325 728092 Mob: 07799767075

www.arenaphysio.co.uk



Village Pub, Restaurant and Hotel
Located in Askrigg, in the heart of Wensleydale

12 Comfortable En-Suite Bedrooms

Double & Twin Rooms

Pub & Restaurant

Great Food and Drinks

Private Car Park

Beer Garden

Main Street | Askrigg | DL8 1HG

01969 650515 | info@middlehouseaskrigg.co.uk

www.middlehouseaskrigg.co.uk

Book For Our Next Events

Yorkshire Dales environmental campaigning charity, Friends of the Dales are excited to announce its next two outdoor events:

Walk: Peregrine Watch at Malham Cove - Thursday, June 12th.

Ian Court, Wildlife Conservation Officer for the Yorkshire Dales National Park Authority, will lead a scenic circular guided walk to Malham Cove offering a rare opportunity to learn more about one of the Yorkshire Dales most majestic birds of prey.

Accessible Walk around Aysgarth Falls - Thursday, July 17th.

Jonathan Smith of Where2Walk and Yorkshire Dales disability access charity Access

the Dales will lead a four mile circular walk exploring a short stretch of the River Ure and its waterfalls. This leisurely paced, stile free route is suitable for most electric wheelchairs as well as being suitable for those who want to walk over less arduous terrain with time to chat and socialise. Two Trampler wheelchairs are also available to hire from the Yorkshire Dales National Park Centre at Aysgarth Falls.

For more details or to book your place/s click visit: www.friendsofthedales.org.uk/events.



**James Peacock SOLID FUEL
MERCHANT Bainbridge**

Good quality fuels at competitive prices.
Smokeless Fuel, Logs and Sticks all available.
Deliveries in Wensleydale, Swaledale and
Coverdale. No delivery too small.

**James Peacock PRIVATE HIRE
Bainbridge**

4-8 seats, Airport runs, pubs, stations, walking
or cycling holiday, luggage transfers.....

Tel: 01969 650212 / 650465
Email: info@james-peacock.co.uk
Web: www.james-peacock.co.uk



UPPER DALES HOME CARE



Home care services are specifically designed to provide assistance with daily living activities in the comfort of an individual's home.



OUR SERVICES



Help at Home includes:

Cleaning
Laundry
Light Chores
Meal Prep



Company & Support:

Companionship
either in person
or by phone



**Carers' Break
Sitting Services:**

Support for those
caring for loved
ones



CONTACT US
01969 667400
or 07817 711227



VISIT OUR WEBSITE
www.udcp.co.uk

**COPY SHOP
PRINTING ~ PAPER
SCANNING & LAMINATING**

Wensleydale Press

Burtersett Road, Hawes **01969 667575**
wpress@tiscali.co.uk

Cumbria Stove Centre

Supply and installation of wood,
coal and gas stoves.

- ◆ Flue and chimney lining services.
- ◆ Inglenook specialists.
- ◆ Fully qualified and experienced Hetas engineers

01539 821061 (day) - 01539 625227 (eve)
SHOWROOM: 34a, Main Street, Staveley

***JUNE WHATS ON LISTING;
please add these dates to your Diary***

June

- 5 Closing date for photography competition. See p.15.
- 6 Concert. Grinton Church. See p.27.
- 7 & 8 Open Studios. 10.00am. See p.5.
- 7 - 22 Wensleydale Community Arts Festival. Numerous events. See p.21.
- 8 Upper Swaledale walk. 1.30pm. See p.5.
- 10 Creative Hub Feasibility Study results. Askrigg Village Hall. 7.00pm. See p.21.
- 11 Bingo. Hawes Market Hall, 7.00pm. See p.16.
- 13 Bingo. Askrigg Village Hall, 7.00pm. See p.16.
- 14 Concert. St Andrew's Church Aysgarth. 7.30pm. See p.17.
- 14 & 15 Exhibition of the Talents. Bainbridge Friends Meeting House. 11.30am. See p.3.
- 14 & 15 Open Studios. 10.00am. See p.5.
- 15 Beamish Reliability Rally lunch stop. Bainbridge, 11.30am. See p.7.
- 18 Lecture. Harmby Village Hall. 2.00pm. See p.26.
- 18 Fashion Show. West Burton Village Hall. 7.00pm. See p.21.
- 19 Bainbridge WI Meeting. Bainbridge Village Hall. 1.00pm. See p.7.
- 20 Concert. Reeth Memorial Hall. 8.00pm. See p.13.
- 20 U3a Meeting. LA&CC. 10.00am. See p.18.
- 20 Ladies only Talk. West Witton Village Hall. 7.30pm. See p.30.
- 21 Musicals Concert. St Margaret's, Hawes. 7.00pm. See p.24.
- 22 Choir Concert. Hawes Junction Chapel. 6.30pm. See p.5.
- 24 Wensleydale Arts Society Talk. Garden Rooms, Tennants. 2.00pm.
- 28 Concert. LA&CC. See p.18.
- 29 Afternoon Tea. Keld Public Hall. 2.00pm. See p.24.

Hawes Christmas Lights present

Nikki Brown is



HAWES MARKET HALL

SATURDAY 16th AUGUST 2025

7.00 for 7.30pm

Ticket £25 Entry by Ticket only

from lizlawson@hotmail.co.uk

Wensleydale Press: 01969 667575

No Bar - Bring your own drinks



Wensleydale Craft Fairs

Quality crafts by local and regional makers
at the Market House, Hawes

14- 15 June

28 -29 June

www.wensleyfairs.co.uk

Tel: 07857 439450

The Moorcock

Garsdale Head

Our licensed Tea Room is open daily
(according to season) from 11.00am to 5.00pm.

We serve light meals, snacks, tea and coffee and a range of beers and spirits.
Bed and Breakfast facilities are also available.

Tel 07960 930047

www.the-moorcock.co.uk

Email. Themoorcock@outlook.com



Blueboxt – June Update

Wensleydale Community Arts Festival

From **Saturday, June 7th to Sunday, June 22nd**. Wensleydale will be host to a series of events around the Dale celebrating the arts in our local communities. Now in its third year, it is another packed programme – see the website for the full programme or pick up a leaflet. Unless stated, all events are offered on a ‘pay as you can afford’ basis (suggested donation £5).

Highlights for St. Matthew’s Church include:

Friday, June 13th - an evening concert from **7.00pm** with Simon Lister, The Pearls (Margaret Forward, Sarah Allinson and Jill Lundberg) and Somewhere Road (Paul Greenwood).

Saturday, June 14th - from **2.00pm** including Easy Listening with Angela Horner (Trumpet) and Steve Wright (Saxophone). At **2.30pm**, songs from the movies with Gail Barlow and Colin Bailey. Organ recital by Geoff Hirst (**4.00pm**) and Poetry, Prose and Readings with Donovan Leaman (**5.00pm**). All Time Favourites with the Colin Bailey Band (**7.30pm**).

Sunday, June 15th - Tea and Cake with the Leyburn Band (**2.00pm**).

Tuesday, June 17th from 7.00pm, ‘Music for a Summer’s Evening’ with The Yoredale Strummers and Liffy.



Sunday, June 22nd - The Dales Community Pop Choir (**2.00pm**).

At Leyburn Methodist Church Hall: **Friday, June 20th, from 7.00pm** - Friends of Dave (Elizabeth Carter) and Light My Choir! Wensleydale’s mixed voice community choir.

Saturday, June 21st from 7.00pm, The Dales Variety Show with Young People from Dales Dance and BlueBoxt.



There will also be workshops from local artists and makers from **10.00am to 1.00pm**. Places cost £20 including refreshments and materials.

Saturday, June 7th - ‘Flowers and Fancies’ cake decorations with Joanne.

Saturday, June 14th - ‘Inspired by the Dales’ with Lynn Ward.

Saturday, June 21st - ‘Exploring Watercolours’ with Maxine Ahmed.

Switcheroo - Theatre performance by Clap Trap Theatre in association with York Theatre Royal. We are thrilled to welcome back popular actors Dominic Goodwin, Thomas Frere and Cal Stockbridge with their latest touring production. Switcheroo, written by Tom Needham and directed by Paul Birch, is a story told twice! “It’s not what you say, it’s how you say it.” Witness this emotional rollercoaster of live theatre as a family’s secrets are revealed and presented as both a drama and a comedy on **Wednesday, June 11th at 7.30pm** in Askrigg Village Hall. Tickets £15 | U18s £7.50.

Sharing the results of our Enterprise and Creative Hub Feasibility Study - On **Tuesday, June 10th at 7.00pm** at Askrigg Village Hall we will be sharing the results of the study and consulting on the options for developing an enterprise and creative hub to support rural arts provision and career pathways for employment across Wensleydale and Swaledale. Is there a future use for Uredale Mill - the Carrs Billington food mill site? Everyone welcome to come along, find out more about our plans and how you could be part of it too. Thanks to everyone who has taken part so far and to Ryedale Creative who were commissioned to undertake the research funded by the UK Strategic Prosperity Fund..

Colours [Fun]draising Fashion Show – **Wednesday, June 18th at 7.00pm** at West Burton Village Hall. We have teamed up with Colours, a nationwide retail organisation that specialises in supporting charities to raise funds. “Our ladies fashion show and shopping events are uniquely designed to offer a fun and entertaining experience. We bring premium high street brands to you at great prices!” There will be a Bar and Refreshments, Raffle, local makers stalls and entertainment with vocalist Bee Darceey. Ticket: £5.00 including a welcome drink.

To find out more or book places for our events and activities visit www.wensleydale.org or contact **Colin Bailey** on: **01969 745810/ 07711 21169** or email: info@wensleydale.org.

Dales Countryside Museum News

Opening times: Daily **10.00am to 5.00pm**
February to October, Last entry one hour before closing.

Contact: hawes@yorkshiredales.org.uk or call **01969 666210**.

Exhibition: Inspiration – From Past to Present. **Until June 13th.**

Don't miss this stunning exhibition of textiles inspired by the Museum collection. Members of The Small Group came along for several research visits, investigating the museum's archive and artefact collections to find things that sparked their imaginations. 'Inspiration-from past to present' is their response. It showcases vintage garments repurposed to illustrate facets of the collection alongside contemporary textile and mixed media pieces.

Yorkshire Dales Young Archaeologists' Club:

The club meets once a month on a **Saturday morning, 10.00am - noon**. At our meeting in May, Steve Collison, Archaeologist for North York Moors, led the group at a dig at Sutton Bank. It was fascinating to see the trenches made in World War 2 to protect the airfield and everyone had the chance to get down to some digging, helping reveal features within the trenches. Please call **01969 666210** or email dcmm@yorkshiredales.org.uk if your child might be interested in joining us.

Education and community engagement:

We're thrilled to be part of The HERDS. This is an international creative initiative on an unprecedented scale – an ambitious coming together of culture and climate action.

Children from Drumrane school had a great time exploring the history of the area with Jane. Dairying was a main focus and they had fun making butter. Lots of our object loan boxes are out with local schools, but if you're interested in borrowing one for your class or community group, just get in touch.

We're also over the moon to be part of the Going Places project, an ambitious, UK-wide programme that will engage new and underrepresented audiences with museum collections across the country through collaborative touring exhibitions. DCM is part of the Green Spaces Shared Places network and will co-create 2 touring exhibitions with young people in a celebration of our collections. We

will be working with Sunderland Culture, Arlington Court and the National Trust Carriage Museum, Exmoor, and The National Memorial Arboretum, Staffordshire. The positive impact that nature and the outdoors can have on mental and physical health, and the ways in which our interactions with outdoor spaces can be transformed and enriched by our social, industrial and agricultural heritage will be a key focus, as well as exploring new ways to use collections, exhibitions and outside spaces to engage with young audiences. The project is supported by The National Lottery Heritage Fund and the Julia Rausing Trust with Art Fund.

Here are the DCM events coming up in June and early July. Events are included in the Museum admission unless otherwise stated and bookings can be made via hawes@yorkshiredales.org.uk unless otherwise stated.

Flora and Fauna Walk:

Tuesday, June 3rd, 11.30am – 3.00pm.

Join Dales Volunteers for a 4 mile walk from the Museum exploring plants, waterfalls and possibly red squirrels. £6. No dogs allowed.

Quilt Workshop:

Saturday, June 7th, 10.00am – 4.00pm.

Traditional North Country Quilting Workshop - Practice all the techniques used to design and make a quilted cushion, which you will start on the day and finish at home. All fabrics and materials provided. £50 Lunch included. Booking essential.

Recipes and Remedies from the museum archives:

Tuesday, June 10th, from 10.00am
(popping up through the day).

Join Jane at a pop-up session in the museum to talk about some weird and wonderful recipes from our archives including those for tasty traditional favourites, writing ink or poisons and remedies for aches, pains, coughs and colds for humans and animals.

Hawes Town Trail:

Tuesday, June 17th, 2.00pm – 4.00pm.

Join our experienced Dales Volunteers on this short 2.5 mile (3.5km) guided walk and explore the history of Hawes and the village of Gayle.

Walking through this lovely market town,

discover the origins of Wensleydale cheese, see where the railway once went and follow a section of the Pennine Way. Starts at the Dales Countryside Museum. £5. No dogs allowed.

FDCM talk and walk around Gayle:

Wednesday, June 18th, 2.00pm – 3.30pm.

An afternoon event with the Friends of the DCM. Rob Ward will lead a walk around Gayle. Meet on the green at **2.00pm**. Donations welcome from non-members.

Recipes and Remedies from the museum archives:

Tuesday, July 8th, From 10.00am and throughout the day.

Once again, join Jane for a pop-up session in the museum to talk about some weird and wonderful recipes from our archives including those for tasty traditional favourites, writing ink or poisons and remedies for aches, pains, coughs and colds for humans and animals.

J. W. COCKETT and SON

Family Butchers

Estd. 1854

Wholesale and Retail Bakers

Main Street, Hawes

Tel 01969 667251

Best Quality Meats

High Class Baking

Freezer Orders Supplied

H & M

CRAFTSMEN

Ingleton | Est. 1987

KITCHENS · BEDROOMS · STUDIES

**High Quality, Bespoke Furniture With
Full Design And Fitting Service**



Showroom: Ingleton Industrial Estate, LA6 3NU
015242 41535 · kitchensandbedrooms.co.uk

Geology walk:

Tuesday, July 15th, 11.00am – 4.00pm.

Please note the change of time – this walk will finish at **4.00pm** and not 3.00pm as stated on the leaflet. Starts at the Dales Countryside Museum. £10 plus a payment to enter Hardraw force. No dogs allowed.

North Yorkshire Open Studios

Julie Edwardson



Preview Evening Friday 6th June 6pm-9pm

Saturday 7th June/Sunday 8th June 11am – 4.30pm

Saturday 14th June/Sunday 15th June 11am – 4.30pm

Yore Mill Gallery

Church Bank Aysgarth DL8 3SR

01969-662829

<https://yoremillcraftshopandgallery.co.uk>



**A personal friendly service for
'all creatures great and small'**

- Small animal consultations, diagnostics, and surgery
- Budget friendly preventative health care plans for dogs, cats, and horses
- Farm Animal routine work
- Ambulatory equine services
- In-house 24-hour emergency service for small animal, farm, and equine

01969 422201

www.wensleydale-vets.com

info@wensleydale-vets.com

Afternoon Tea

Afternoon Teas will be served in

Keld Public Hall

on **Sunday, June 29th from 2.00pm**

to raise money for the Alzheimers Society.

Everyone welcome.

Gayle Methodist Church – Camp Meeting

Please come and join us, everyone is welcome at **2.00pm** on **Sunday, July 6th** at Gayle Methodist Church for our annual outdoor Camp Meeting this year led by the Rev. David Clark accompanied by Hawes Silver Band.

For those visiting or new to the area, this is a quintessentially Wensleydale event not to be missed. The service will be followed by a traditional 'bring and share' tea in the chapel schoolroom. We hope to see you there.



Mike Addison FRCO.C.
OPTICIAN

Mike Addison Optician

Market Street, Kirkby Stephen,

017683 71555

Email : infoks@mikeaddisonoptician.com

- Providing eye care for all the family
 - Private & NHS patients welcome
 - Children & over 60's receive free eye examinations
 - Supplier of all spectacle & vision related products
- or The Shire Hall, Appleby, 017683 53199

PENNINE PRINT



Full Colour Print
Invites - Tickets
Brochures - Leaflets
Menus

all at affordable Prices

simon@pennineprint.co.uk

Tel: 07860 620 411



Musicals for a Midsummer's Evening

On **Saturday, June 21st at 7.00pm**, at St. Margaret's Church, Hawes, Amy Cockett (vocals) and Mal Carruthers (Keyboard) will present "Musicals for a Midsummers Evening".

Whatever your tastes, whether it be the music of Lloyd-Webber or Sondheim, or iconic solo's from hit shows such as Les Miserables and My Fair Lady, there will be something for everyone to enjoy. Amy's soaring yet sensitive vocals paired with Mal's powerful but passionate keyboard accompaniments are sure to enhance the selection of songs performed. As an additional bonus, Rev. Dave Clark will also lend his vocal talents to a couple of classic songs as well as singing a duet with Amy.

Entry to the concert is free, with retiring donations towards the Organ Restoration Fund at St. Margaret's. This event is kindly supported by J. Blades and Sons, Hawes who in conjunction with the Wensleydale Pantry, will be providing the interval refreshments. So, why not celebrate the midpoint of summer and come and join us at St Margaret's Church for a musical feast.

TEASDALE ELECTRICAL

Your local electrician serving the dales and the surrounding areas

Askrigg

North Yorkshire

Tel - 07814 184974 (Steve)

Email - teasdaleelectrical@icloud.com



Unit 2, Store 3,
Washfold Farm,
Leyburn, DL8 5JZ

All vehicles catered for

- * Servicing, Tyre Supply & Fitting,
- * Design & Fabrication, Mechanical

07717 474823



OUSEWEM

Turning Insight Into Action - Funding the Future of NFM

Natural flood management (NFM) uses natural processes - like leaky dams and tree planting – to slow water and reduce flood risk. It also brings other benefits, from supporting wildlife to improving soil health. But to secure long-term investment, we need to prove that that NFM works.

That's why Ousewem is developing a clear and consistent way to measure NFM's impact. Through our recent projects, we know first-hand how modelling is helping identify where NFM measures make a real difference in Wensleydale.

Now we are inviting insights to help improve how we track NFM's impact and how funding can be scaled up to support more delivery.

Along side this, we are exploring how NFM is currently funded and how investment can be expanded. If you are a project manager, fund manager, policymaker or investor involved in NFM or nature-based solutions, we would like to hear from you. Join us in shaping the future of NFM monitoring and build on our ongoing research into modelling and monitoring.

Visit www.ousewem.co.uk or email us at ousewem@york.gov.uk.

Read more in our latest blog: [Measuring what matters: choosing the right indicators for NFM success.](#)

Hawes Countrystore

"For All The Farmers Needs"

Not Just All Your Agricultural Supplies!

Country clothing, work ware & footwear.

Pet, equine, poultry, wild bird feed,

garden supplies and household goods!

Call in & see for yourself!

Tel- 01969 667 334 Fax- 01969 667 335

Monday – Friday 8am – 5pm Saturday 9am - Noon

CBAL Fuels- 01524 599 333

Head Office (Carlisle)- 01228 552 650

Hawes @carrs-billington.com

www.carrs-billington.com Follow us

SANDERSON & CO.

"Decorating Supplies"

**DULUX COLOUR
ADVICE CENTRE**

Scanner Colour
Matching & Paint Mixing



Stockist of Leading Brands including,
**Dulux, Crown, Leyland,
Ronseal, Cuprinol**

Extensive Wallpaper Pattern Library
Trade & Quantity Discounts Available

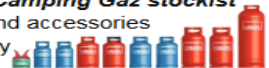
High Street, Leyburn DL8 5AQ
01969 623143

Email: sandersonandcoleyburn@gmail.com

Also CALOR & Camping Gaz stockist

Mobile heaters and accessories

Free local delivery



Bainbridge Vets Ltd

**A comprehensive, friendly veterinary
service treating animals large and small**
24 hour emergency service.

Open Surgery

Monday-Friday 9.00-9.30am and 2.00- 2.30pm

Saturday morning 9.00-9.30am

(appointments available at other times)

01969 650263

EDGLEY GARAGE



Edgley Garage, Aysgarth,
Leyburn, North Yorkshire,
DL8 3AD

01969 663094

edgleygarage@yahoo.com

MOT testing; Full servicing;

Air conditioning service;

**Brakes, clutches and all
general repairs to vehicles.**

Christian Fellowship Meeting

Come and join us at Bainbridge Village Hall on **Sunday, June 15th at 2.30pm** for an afternoon of Christian Fellowship. Singing your favourite hymns with refreshments.

**M Fothergill**
Building Services
All aspects of building work undertaken
667936 / 07966 624649
Hawes DL8 3RP

Plastering Alterations Extensions
Roof work General Maintenance

Nature helps lessen flood risks – let's harness its power together 🌿

Take our quiz to test your knowledge ✅

Scan me



or text
hello ousewem 13
to 07700 137 717



OUSEWEM

SEWEM is a registered charity. All proceeds from the quiz will be donated to the charity. For more information, please contact the charity.

Craniosacral Therapist

Craniosacral Therapy and SCENAR (Self Controlling Energy-Neuro-Adapting Regulator) reflexotherapy now available in Hawes or at your home.

Finding your way to new health.

Call/text **07850 421925** for appointment/voucher

Sykes House in Askrigg

Grocery Shop and B&B
Shop Open 7 days a week

Enquire for
B&B bookings at
www.sykeshouse.co.uk
01969 650535

Middleham and The Dales Local History Group

Wednesday, June 18th, 2.00pm
at Harmby Village Hall

The Isobel Jenkins Lecture:
Lady Isobel Chaytor – Pioneering Aviatrix
by Georgie Sale

Whilst living in Croft-on-Tees, Georgie Sale helped with an oral history project recording memories of Croft by older members of the community. The local landowners there are the Chaytor family and through an eBay 'hit' she came across a postcard of Lady Isobel Chaytor, 'Aviatrix'.

The book on Croft is now written and published, but the research into this fascinating woman, born 1890, who started life as a baker's daughter in Darlington and married into the titled Chaytor family continues. She took full advantage of all the life a titled lady could offer; she threw herself into all the current trends for 'bright young things', which included flying. At the age of 42, she and a young pilot flew in an open topped Gypsy Moth to Australia.

This was her greatest adventure but there were lots of others.

She died in Madeira in 1968 and only the undertaker and a hotel manager attended her funeral. This is the story of a woman who lived life to the full.

Members, new members and visitors are always welcome. Annual membership is £12 for 9 meetings and visitors can attend for £3 per meeting.

For more information contact **Tony Keates**
01969 640436, or dotandtonyk@btinternet.com.

S Peacock Woodwork and Decorating

- Fitting of skirting/architrave, doors, shelving
- Wood panelling •Bespoke Furniture
- Painting •Wallpapering

Contact Shaun on: **07794 246392**

Email: shaunpeacock1983@gmail.com

Amjad Ali Khan - An Opportunity Not to be Missed

Let's face it: the Dales aren't noted for their diversity. I'll admit it's one of the things that I miss most as an 'incomer'. So the imminent arrival of Amjad Ali Khan, one of the greatest living musicians from India may either pass unnoticed, or create a stir. I hope it's a stir, because a 70-year-old grand master who comes from a family that has produced superb musicians over the last 200 years has to be seen. You'd go and see the Kanneh-Masons, the UK's most famous musical family: they're beginners by comparison!

Amjad Ali Khan gave his first recital aged 6; 64 years later he has played in New York's Carnegie Hall, London's Festival Hall and Wigmore Hall, and virtually every major venue across the world. He has played for UNESCO, the United Nations, countless major world events, Princess Diana... It's pretty extraordinary that he will be in the Dales on **June 6th**.

His instrument is the Sarod, a sweeter and smaller instrument than the sitar that is what identifies Indian music for many people. Less jangly, more melodic; Sarod means 'melody'. It has 19 strings, some sympathetic (they reverberate in response to what is played), and looks something like a very large mandolin and a cello played on your lap, with a plectrum. But different. Anyone who plays the instrument now was taught by one of Amjad's ancestors, including his two sons who will also be in Grinton Church on **June 6th**.



Amjad's virtuosity is extraordinary, though he doesn't use it only for effect, and has some wise words about the music he plays. "I want to communicate with the listener who finds Indian classical music remote. There is no essential

difference between classical and popular music. Music is music." The music he and his sons play casts a spell, often building gradually from a slow, contemplative, exploratory beginning to something fast and driving. It has a sense of humour; it's essentially improvised. It will certainly make you see and hear the familiar surroundings of Swaledale in a new light when you emerge into the night air.

You can buy tickets on the www.swalefest.org website, by calling **01748 880019**, or by email at enquiries@swalefest.org. **Friday, June 6th** at Grinton Church: something completely different.

A.M.

The Iron Maiden

*Not enough hours in the day?
Fed up of never ending ironing?*

My ironing service is definitely a way of buying back much needed quality time in a busy life!

Tracy Hume

07527 796523 or 01969 666048.

Can arrange collection/delivery



JB TV AERIAL & SATELLITE SERVICES



John Banks
Proprietor

Telephone: 07891 944175
Email: johnbankshawes@gmail.com



J. Wilman Property Services

Domestic and Commercial
Clearances, Removals and
Fencing. Garden and Property
Maintenance. Scrap Metals
and Waste Disposal.

All Work Considered

**Tel 07791656380 or email
jtw9@live.co.uk for a
Free No Obligation Quote.**



Upper Wensleydale Benefice Services in June

	St Mary & St John's, Hardraw 9.00am	St Margaret's, Hawes 10.30am	St Oswald's, Askrigg 10.30am	St Matthew's, Stalling Busk 2.30pm
June 1st	The Gathering – Benefice Family Communion, St Oswald's Church 10.30am			
June 6th	Communion at Sycamore Hall TV Lounge 10.00am			
June 8th	Morning Prayer	Holy Communion	Holy Communion	Soup followed by Communion 12.30pm
June 15th	Holy Communion	Family Service	Morning Prayer	
June 22nd	Morning Prayer	Holy Communion	Holy Communion	Afternoon Prayer Pathfinders and Explorers
June 29th	Songs of Praise	Morning Prayer	Forest Church	
Evening Prayer by telephone is held at 4.00pm every Sunday. For details see the website www.upperwensleydalechurch.org/services				

Hope

I've been thinking about Hope. We all need it. We all have it. What's yours I wonder? Back in February there was hope for helpful weather during the lambing season. Now in June after one of the driest Spring's in living memory there is hope for rain! On the morning of the Eurovision Song Contest Final, the Band of the Irish Guards played a joyful rendition of our entry outside Buckingham Palace just hours before the public jury handed us the infamous 'Nil Point'. Supporters of Crystal Palace football team however, are revelling in a different experience of hope. For the first time in their history they have won the coveted FA Cup and pictures of their celebrations filled the media.

The writer of the book of proverbs in the Bible records these well used words: 'Hope deferred makes the heart grow sick but a longing fulfilled is a tree of life.'

For the 1.4 billion Catholics on the planet, the recent announcement of Pope Leo XIV as their spiritual head rekindles a hope in time honoured

tradition as well as a new future. Amongst his first words to the media comes this statement: "Brothers, sisters, I speak to you, especially to those who no longer believe, no longer pray, no longer hope because they think God has left them I'm asking you not to close the door. Give a chance to the God who waits for you, without judgement.'

Now there's something I can definitely hope for.

Reflex Dave

reflex
orthopaedic massage

Orthopaedic Massage

Back & neck pain, strains & sprains
Nerve injuries, sciatica, chronic pain

**Robust Covid-Secure
procedures in place**

Clinic in Hawes

07975 999373

Find me on Facebook www.reflex-om.com

Hawes in Bloom

Just to remind my faithful band of volunteers that the delivery of plants will take place on **May 28th** at Metcalfe's Yard at **9.00am**. If you cannot make this date or time, just give me a call so I can sort numbers.

If anyone else who hasn't helped before, but would like to join in the fun, either planting or distributing the troughs, just give me a call. Don't worry if you haven't got green fingers, I will set the plants out as usual.

We will again hold a Bingo Night in aid of funds for Hawes in Bloom on **Wednesday, June 11th**. Doors open at **7.00pm** and play starts at **7.30pm** prompt. There will be (amongst other things), plants and a lovely planted trough as a star prize. Hope to see you there!

We will be holding our 'Sale of Surplus Plants' on **Saturday, May 31st** at the Penny Garth car park in the High Street from **4.00pm** onwards. There will also be bags of compost (we can deliver) and a few different sized empty and planted troughs as well.

Let's hope we can look forward to more of the weather we've been having in April and May!

Richard, your resident Plant Pest



Visitor Centre This Spring Open Daily

Yorkshire Wensleydale Cheese Experience
Enjoy daily demos, try our Cheese Trail Quiz and peek inside the Creamery. **Children go FREE at weekends.**

NEW 'Nifty Norbot'

Come get your picture taken with the newest member of the Wallace and Gromit crew in our Yorkshire Wensleydale Cheese Experience.

Cheesy Afternoon Tea

Try our Cheesy Afternoon Tea for Two. Featuring a range of sweet and savoury cheesy goodness for just £17 per person.

1897 Coffee Shop and Garden

Enjoy a coffee, cake and a range of lite bites inspired by our cheese.

Cheese and Gift Shop

Everything you need to find the perfect gift. Enjoy complimentary sampling as you shop and find a new way to perfectly pair your cheese.
find a new way to perfectly pair your cheese.
wensleydale.co.uk

Bear Cottage Interiors

Curtains and Blinds,
Fabric and Interiors
Market Place Hawes

01969 666077

Email julie@bearcottageinteriors.co.uk
Website www.bearcottageinteriors.co.uk

HAWES POST OFFICE in the Community Office

OPENING TIMES:

9.00am to 5.00pm Monday to Friday

9.00am to noon on Saturday

Phone number: 01969 667201

BAINBRIDGE POST OFFICE

Post Office open at Bainbridge
in Sycamore Hall 9.00am to 11.00am
Mondays and Wednesdays

ASKRIGG POST OFFICE

In Sykes House, Noon to 2.00pm
Mondays and Wednesdays



Sycamore Country Store

Now Open Inside Sycamore Hall

OPENING HOURS:

MONDAY TO FRIDAY. 9.00 am to 1.00 pm

Selling a wide range of everyday essentials, including dairy products, fruit & veg, bread, cakes & savouries, sandwiches and sweets

WENSLEYDALE TREE and HORTICULTURAL SERVICES (Est. 1995)

DAVID ALLEN (HND Arboriculture)

CHARLIE ALLEN (BSc Arboriculture)

Fully insured (£5million) professional tree work:
felling, crown thinning etc.

Petrol log splitter and woodchipper for hire.

Tree stump removal.

Hedge establishment and maintenance.

Supply/ planting of forest/ ornamental trees.

Fire tree maintenance. Weed control services.

treesinhawes@gmail.com

01969 667364 or 07811 576108



Marie Curie Wensleydale Fundraising Group

Thanks to many generous people, the group has raised £5,380.04 since April 2024. Considering the grim news about financial hardships, this is an amazing amount, only a little less than what was raised from 2023-24.

Over the next month or two, the fundraising group has a few events planned:

June 20th - the duo 'Cutting It Fine' are talking and demonstrating from the inside out, how a Victorian lady would dress for Afternoon Tea. This is a ladies only evening, starting at **7.30pm** at West Witton Village Hall. Tickets - £7.50 - light refreshments included. Contact: Mary Sadler – **01969 623813**.

June 28th - Car Boot Sale at Leyburn Auction Mart. This is to raise money for Marie Curie, and will be supported by Leyburn Arts & Community Centre, just across the road. Sellers - £10 per vehicle. Buyers - bucket donation. If wet, the stalls can be undercover in the livestock area. The fundraising group is very grateful to both the auction mart and LACC for the use of the facilities.

Moving to July, there are street collections in Hawes and Leyburn:

July 22nd - Hawes Market Day, **10.00am** and finishing at **2.00pm** and **July 25th** - Leyburn Market Day, **9.00am** and finishing at **3.00pm**.

If you're able to spare an hour to help at either of these, either sign up via

www.mariecurie.org.uk/get-involved/fundraise/collect or contact: Gemma Hewitt at gemma.hewitt@mariecurie.org.uk.

The money raised from these events will be used locally to help those who are living with any terminal illness. The Marie Curie Nursing Service will give Hospice Care at Home to those in need.

If you are interested in helping Wensleydale Fundraising Group to raise more money for Marie Curie, can help with any of the above, or are interested in bringing things to sell at the car boot, please email: wensleydale.mariecurie@gmail.com.

Helping to organise, or to help at, events, holding a tin at a street collection, putting up a poster, etc., if you're able to give an hour or two here and there, you'll be very welcome.

www.facebook.com/Marie-Curie-Wensleydale-Fundraising-Group.

Registered Charity No: 207994.

Yogafusion *Fitness, yoga and meditation*

Guided by James your friend in fitness

- A *dance-inspired warm-up* to energize your body and awaken your spirit
- *Yogaflow* to let go of any tension and stress.
- *Guided meditation* to cultivate inner peace

The Nash Hawes

Monday Evening 18:00 - 19:00

Where Movement Becomes Medicine, and Fitness Feels Like Friendship

Book Now

yogafusionbyje@gmail.com



Robin Jessop

Free Market Appraisals

For Selling & Letting Rural Property.
Specialists in Selling by Auction.

Market Valuations for Tax Planning,
Lending, Compensation and Council Tax
purposes

Marwood House, Railway Street, Leyburn
Tel: 622800

**Hearing loss shouldn't make
you feel isolated and anxious,
we are here to help.**



For all your hearing needs!

- Hearing test
- Free hearing aid trials
- Ear wax removal
- Tinnitus assessment and therapies
- Hearing aid repairs and servicing

Hear & Now
Independent Hearing & Tinnitus Specialists

CALL 01765 278 744

8 Queen Street, Ripon, North Yorkshire HG4 1ED

info@hearandnowonline.co.uk

www.hearandnowonline.co.uk

Upper Wensleydale Ladies Luncheon Club

The next meeting of the Luncheon Club will be on the **24th September and thereafter on the 4th Wednesday in the month** at the Street Head Inn at **noon for 12.30pm** lunch.

Why not come along and join us, we are a small group and would make you very welcome. Anyone wishing to join please contact **Ray Wilkinson** on **01969 663613**, or **Sue Ryding** on **01969 663551**.

Marie Winspear - Home Help

Looking for Home Care? 🏠

Richmondshire/Wensleydale area 🌍
Can also cover areas of Cumbria 🏡

✓ DBS checked

We are a Local Team of Self Employed Carer's.
Working in the community to help your nearest and dearest to be able to stay at home and deliver a high level of care.

We offer a range of services including:

- ✓ support for hospital appointments
- ✓ companionship
- ✓ household support
- ✓ help with day to day tasks
- ✓ palliative care
- ✓ night care is available too.

We always strive to go the extra mile ❤️

We currently have availability if you need support or a loved one needs caring for...we hope we are the perfect team for you!

Tel: 07853379607



Swan Farm, Redmire,
Leyburn DL8 4HA
01969 625647
castletimberbuildings@mail.com
castletimberbuildings.com

All of our products are hand made to order, from the smallest of sheds to the more elaborate designed summer houses. Our team of experienced joiners and specialists are on hand to advise and guide you, to help get the most of your product.

We aim to deliver the highest quality buildings, tailor-made to your requirements using only the finest quality timber and ethically sourced. You can be reassured that we also care for the environment.

Mystery Picture

Last month's Mystery Picture was of Disher Force above Woodhall.

Where can you find this view of Penhill?



CHAPEL GALLERY

Work from local artists and crafters. Bespoke Workshops available. Coffee and cakes. Dogs and children welcome.

Open daily (except Sundays)
11am to 4pm

Burtersett Road, Hawes, DL8 3NP

Tel: 07474 138536

info@chapelgalleryhawes.com

www.chapelgalleryhawes.com

THE HEALING COLLECTIVE

Encouraging health and well being
with a range of therapies.

Therapies for animals also available.

Coach House, Berry's Farm Shop & Café,
Swinithwaite, DL8 4UH. t.0845 474 2383

info@healingcollective.co.uk
www.healingcollective.co.uk



Upper Dales Health Watch

The Patient Participation Group for the
Central Dales Practice

Synopsis of the minutes of the meeting
held on April 29th

- The Central Dales Practice is planning an annual community event to which a wide range of agencies would be asked. The first one looking at support for carers will hopefully be on **Monday, September 22nd** in the West Burton Village Hall **11.00am to 2.00pm**. Venue to be confirmed.
- Collective Action has not needed to start. The GP settlement seems to have taken with one hand and given with another. The actual situation will be clearer after Q1 when the situation will be reviewed.

- Three members of staff will be undertaking a nutrition course to enable them to advise patients on exercise and diet.
- Weight loss medication is only funded privately. Patients with some conditions could be adversely affected. If patients give permission for the CDP to be informed that they are taking this medication, patients at risk will be contacted. .
- The uptake for 2025 'Flu jabs was less than hoped, and some vaccine had to be returned. The Covid jabs were Moderna this year and again the uptake was somewhat disappointing. It is felt that job fatigue was the main reason.

Jane Ritchie,

Hon Secretary, Upper Dales Health Watch

Dales Garage

Services we provide

Exhaust, Diagnostics, Brakes, Welding, MOT, Suspension, Timing Belts, Clutches, Batteries, Tyres, Services. All makes and models.

Unit 2, Hawes Ind Estate, Brunt Acres Road
Hawes DL8 3UZ

www.facebook.com/dalesgarage1

Call – James 07399 513605

Tyler 07376 487776



DENTURE PROBLEMS?



Denture Studio

**Are you unhappy with the look or fit
of your existing dentures?**

WE CAN HELP

Our in-house Clinical Dental Technician Mark
can provide quality bespoke dentures
designed to your individual needs



To Book
FREE
Consultation **CALL**
01677 422968

Website: www.orcharddentalab.co.uk

Email: info@orcharddentalab.co.uk

1 The Villas, Bridge Street, Bedale, DL8 2AB



- **City & Guilds qualified**
- **Fully insured** • **Certificates issued**
- **Prompt professional service**
- **NO MESS - NO FUSS!**

Martin Tradewell

QUALIFIED CHIMNEY SWEEP

01969 640099

5, The Row, Horsehouse, Leyburn. DL8 4TT
Email: martin@daleschimneysweep.co.uk



Home Run

Pet sitting, House sitting, Dog walking

I offer a friendly, personalised pet and house
sitting service in Wensleydale and further afield.

Nicola – 07866 336924

nicola@homerundogsitting.co.uk

www.homerundogsitting.co.uk



Dalesbus

Saturdays only - Dalesbus No 80 from Lancaster and Ingelton to Hawes. This new scheduled service - operated for DalesBus by Lonsdale Coaches - began on May 3rd. It is already proving its value with a variety of journey opportunities to destinations and activities along the route.

For example, on its morning journey from Lancaster, the bus calls at Ribbleshead Station, bringing walkers and other rail passengers from Rochdale, Manchester and Clitheroe down to Hawes (arriving market place/ Board Inn at **10.45am** and NP Centre/museum **10.50am** and then connecting with the LWB for Bainbridge, Askrigg and Leyburn.

On the first return journey to Lancaster, departing from Hawes NP Centre and museum at **11.05am** (Market Hall **11.08am**), the No 80 bus reaches White Scar Cave, near Ingelton, at **11.40am**. The cave was discovered in 1923 and in 2025 is celebrating its Centenary Year of being open as a Show Cave. Return bus for Hawes departs White Scar Cave **4.30pm** (it's essential to put your hand out in good time so the driver knows you want to board the bus) and for Ingelton/Lancaster at **5.30pm**; this bus service ends **Saturday October 18th**.

Ruth Annison



TOM ADDISON

FINE FURNITURE

Fine quality furniture handcrafted in the heart of Wensleydale.

Free standing and fitted furniture designed & handmade to your requirements.

All enquiries welcome: 07585952951

www.tafinefurniture.co.uk

W.S.HARTLE

FAMILY BUTCHER, WEST BURTON

Best Quality Meat, West Burton Lamb,
Homemade Sausages and Burgers,
Free Local Delivery and Freezer Orders

Tel: David on **01969 663302** or visit
www.hartlebutchers.co.uk

Come and see





An Exhibition of the Talents

Quaker Meeting House in Bainbridge

June 14 & 15 11.30am - 4pm

that's the weekend of Father's day and The Beamish Car Rally





You can get there on Little White bus 156 bus on Saturday
for Sunday look at DalesBus routes www.dalesbus.org

Do you sculpt, whittle, draw, sew, knit, pot, write, paint,
take photos, colour in, upcycle, quilt, tat,
make lace, weld or create in any other medium?

YOU

are invited to exhibit anything that you have made

Please bring your exhibits to the Meeting House
Thursday or Friday June 12 or 13 11am-4pm

We are delighted children from local schools will be exhibiting.
We are really excited to see what you can make!

For further details please contact: Gwen Clark 01969 667411

GS PAT TESTING

**HOLIDAY LETS
LANDLORDS
SMALL BUSINESS**

FULLY INSURED

☎ 07984214960

✉ gspattesting@gmail.com





Yorkshire Dales Accountancy
Chartered Accountants

taxation & business advisors

We provide a broad range of accountancy and taxation services to our clients.
Please feel free to contact Martin or Hazel.

E-mail:
info@yorkshiredalesaccountancy.co.uk

Telephone: 01969 678128

Website:
www.yorkshiredalesaccountancy.co.uk

Index to Advertisers

	Page		Page
Accountants, O'Reilly, Hawes	14	Logs, Springbank Logs, Hawes	17
Accountancy, Yorkshire Dales	33	Logs, Seasoned Hardwood	4
Advertising Rates and Contacts	36	Lord Automotive	24
Alcoholics Anonymous	9		
Appliance Repairs, Bartlett	17	Massage, Mobile Therapist	15
Aysgarth Falls Hotel	12	Middle House, Askrigg	18
		Music Tuition, Colin Bailey	17
Bear Cottage Interiors	29		
Boiler Service – Efficient Heat	4	Optician - Mike Addison	24
Boiler and Aga Service, M.F.W.	16	Orthopaedic Massage, Reflex	28
Builder and Plasterer, M. Moore and Son	6	Ousewem, Flood Resilience	26
Builder, Dinsdale John and Ted	17		
Builders, Moore and Blackhurst	8	Pet and House Sitting, Home Run	32
Building Contractor, Andrew Hawkins	6	Physio, Arena	18
Building Services, Fothergill M	26	Plumbing and Heating, Parfitt J	17
Butchers, Cockett, Hawes	23	Plumbing & Heating, Upper Wensleydale	11
Butchers, Hartle, West Burton	33	Portable Appliance Testing (PAT)	10
		PAT Testing	33
Chapel Gallery	31	Post Office,	
Chimney Sweep, Dales Sweep	32	Hawes, Bainbridge and Askrigg	29
Coach Travel and Holidays – Bibby's	13	Print Services, Pennine Print	24
Coal Merchant, Peacock	19	Print Services, Wensleydale Press	19
Craniosacral Therapist	26	Property Clearance Solutions	27
Cumbria Stove Centre	19		
		Scrap Car and Commercials Collection	13
Dales Garage	32	Sewing Needs; Kearton	14
Decorating Supplies. Sanderson & Co	25	Solicitors, Scotts, Hall and Birtles	10
Dental Lab, Orchard	32	Solicitors, McGarry	11
Dog Walking – Precious Pals	16	Slimming World	15
		Sycamore Country Store	29
Edgley Garage, Aysgarth	25	Sykes House, Askrigg	26
Electricians - Teasdale	24		
Estate Agent, Jessop Robin	30	Tailoring - Applegarth Couture	13
		Taxi, Peacock, Bainbridge	19
Fish Market, Hawes	14	Tea Room, Hamilton's, Aysgarth	9
Flooring - NH	15	Tea Room, Moorcock	20
Fuel Available, Dale Head Garage	13	Timber Buildings, Castle	31
Funeral Directors, Sanderson and Co.	4	Travel Specialists – Sturdy Travel	11
Furniture, Handcrafted, Tom Addison	33	TV Aerial & Satellite Services. J.Banks	27
Hawes Country Store	25	Vets Bainbridge	25
H&M Craftsmen, Ingleton	23	Vets, Wensleydale	23
Hairdressing, Edie Peacock	36		
Hairdressing, Twisted	13	Wensleydale Craft Fairs	20
Healing Collective, Swinithwaite	31	Wensleydale Creamery, Hawes	29
Hearing Tests and Aids	30	Wensleydale Tree Services, D. Allen	29
Home care, Upper Dales	19	Withywood Stores, West Witton	15
Home Help, Marie Winspear	31	Woodcraft Studio & Timber Services	7
		Woodwork and Decorating. S. Peacock	26
Ironing Service—Tracy Hume	27	Woodwork and Decorating. Steve Ward	4
Joiner and Cabinet Maker, Bushby	13	Yogafusion	30
Joiner, Solid Joinery Solutions	9	Yorkshire Foot Clinic	11



Yorebridge Sport and Leisure Centre

The Wensleydale Centre, Askrigg.
Tel. 01969 650060

Bingo! We are looking forward to our fundraising bingo with Dales Charity Bingo on **Friday, June 13th**, at Askrigg Village Hall, eyes down at **7.30pm**. Everyone is very welcome at this family friendly event.

Parlez-vous francais? Fancy learning or improving your French speaking skills? Come along and join our friendly group for French conversation with experienced tutor Liz Sowter in a relaxed and supportive environment. The emphasis is on communication, but we will work on vocabulary and structure to give you confidence and help you progress. Sessions are **every Tuesday from 9.30am to 10.45am**. The cost is £7 per week. Booking is essential.

Planning to play regularly during the year? Our tennis membership includes LTA membership, free court bookings for 12 months and membership of our tennis club, which includes weekly club night and the opportunity to book lessons with our Level 4 Coach, Mark.

Tennis membership can be purchased on our ClubRight website, we have individual and family memberships available: - yorebridgesportandleisure.co.uk/membership.

Can I come to the gym? Yes. A gym is a safe place to exercise for anyone of any fitness level. All gym users must receive an induction, this will build your confidence and understanding of how to get the best out of the equipment and machines. If you are visiting the Dales and would like to keep your regular gym sessions going during your stay, we have a self-certification form for those who have undertaken an induction in their local gym and are confident and competent gym users. This is available on the sign-in desk. Please don't hesitate to get in touch with any questions.

Gym membership – purchased through ClubRight gym management system <https://www.yorebridgesportandleisure.co.uk/>.

We have a variety of gym memberships including monthly, couples, student, and junior memberships, as well as pay as you go vouchers. These allow you to use the gym in a way that suits you and have a great workout to meet your needs.

Fitness classes - via zoom or live class as indicated. Booking is essential for all classes. Email admin@yorebridge-sport.co.uk or phone **01969 650060**. Classes are: (£9 pay as you go or class membership option available.)

Fit for Life - **Mondays** (live and on zoom) **9.15am - 10.15am**. Building and maintaining strength to live life your way. Weights, resistance bands and equipment available to borrow in the gym.

Warm and Well – **Mondays** (live) **11.00am – noon**. Enjoy a social, active class building core strength. Standing and chair-based exercise.

Tennis – **Mondays** (live) **6.00pm – 7.00pm**. Social tennis, weather permitting. Get in touch to join the group: yorebridgetennis@gmail.com.

High Intensity Bootcamp **Tuesday and Thursday** (live) **6.00am – 7.00am**. Get that morning metabolism boost.

Circuits – **Wednesdays** (live and on zoom) **9.15am - 10.15am**. Exercises to keep active people, active. Work at your level through a mix of cardio and strengthening exercises. Weights, resistance bands and equipment available to borrow in the gym.

Yogafusion – (£6) **Thursdays** (live) **9.30am – 10.30am** with Janesse. To book please email yogafusionbyj@gmail.com.

Strong and Able – **Fridays** (live) **11.00am – noon**. Maintain your ability to get out and enjoy life, build muscle tone, stability around movement and keep flexible and mobile around joints. Standing and chair-based exercise.

Over 40's Walking Football (£3) **Fridays** (live) **6.30pm – 7.30pm** with Glenn on the MUGA, yorebridgetennis@gmail.com.

Facebook - We are on Facebook, Yorebridge Sport and Leisure, give us a follow to keep up to date with the news from the centre.

Fundraising - We have an Easyfundraising account for The Yorebridge Sports Development Association Ltd. It is simple to join, doesn't cost you a penny and will help us to keep delivering. Simply scan the QR code and follow the steps, thank you so much for all your support!





LEYBURN ARTS AND
COMMUNITY CENTRE

Cinema & Events



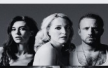
Tuesday 3 June 7pm
Vermiglio (15) 1hr 59m



Coming Soon:
The Penguin Lessons



Friday 6 June 6pm
A Real Pain (15) 1hr 30m



Thursday 5 June 7pm 3hrs 23m
National Theatre Live: A Streetcar
Named Desire (15)



Friday 13 June 6pm
Widow Clicquot (15) 1hr 30m



Saturday 28 June 7.30pm
Live Music Event: An Evening with
Edwina Hayes



Friday 20 June 6pm
September 5 (15) 1hr 35m



Coming soon: Saturday 19 July
Live Music Event: Liffy Live!



Friday 27 June 6pm
Mr Burton (12A) 2hrs 04m



Coming soon: Saturday 2 August
Live Music Event: Jayne Darling



Coming Soon:
Bridget Jones: Mad About The Boy



Coming soon: Saturday 9 August
Live Music Event: Snake Davis

Please book tickets online where possible. You can book & pay online via our website.
Our licensed café/bar opens 30 minutes before all events & screenings.

The Old School House, Richmond Road, Leyburn, DL8 5DL

www.leyburnartscentre.com



Edie Peacock Hairdressing At the Parlour

Call: 07817 312906

Advertising

Boxed adverts: £6, £12, £18
(dependent on size)

There is a big reduction for six issues or
more, so for six issues the totals are:

£25, £50 or £75

Greetings etc. £2

What's ons (non-commercial) are free

Contact for adverts:

Barry Cruickshanks

01969 667458

uwnlinput@gmail.com

*Whilst we try to ensure that all information is correct
we cannot be held legally responsible for omissions
or inaccuracies in articles, adverts or listings, or for
any inconvenience caused. Views expressed in articles
are the sole responsibility of the person by-lined.
Articles by committee members carry just their
initials.*

*We appreciate being asked before any part of the
Newsletter is reproduced.*

Postal Subscriptions

If you would like to receive the Newsletter
by post every month the cost is £16 per annum.
Please pay by BACS (Account 74237721, sort
code 51-61-33) and send your full address
details to uwnlinput@gmail.com. Or send a
cheque for this amount (made out to the Upper
Wensleydale Newsletter) plus your details to
Karen Jones, Skellgill Cottage, Skellgill Lane,
Askrigg, DL8 3JG.

Published by

The Upper Wensleydale Newsletter
Lilac House, The Holme, Hawes, DL8 3QR
01969 667458

Email for submission of articles, what's ons,
letters etc.: uwnlinput@gmail.com

Newsletters on line, simply search on
"Upper Wensleydale Newsletter"
Archive hard copies back to 1995 are in the Dales
Countryside Museum resources room.

Editors: Barry Cruickshanks,
Kevin Davis,

Committee: Malcolm Carruthers, Roy Chapman,
Tony Hutchinson, Alyson Jones, Karen Jones
(Treasurer), Alastair McLachlan
Neil Piper, Karen Prudden,

**Founded in 1995
by the late Alan S. Watkinson**