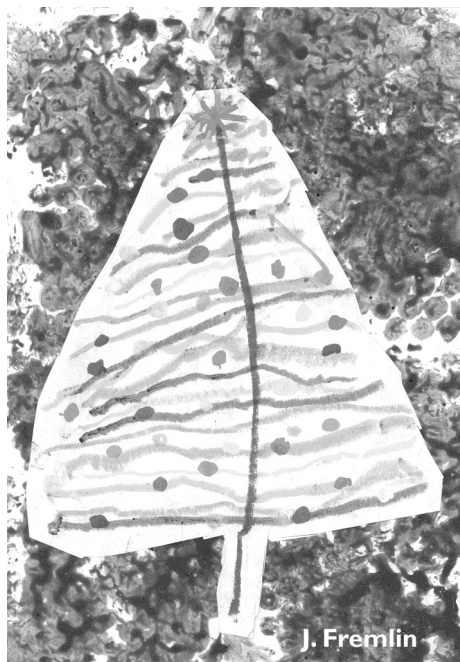


THE UPPER WENSLEYDALE NEWSLETTER

Issue 326

December 2025/January 2026

**Donation please:
50p suggested**



Covering Upper Wensleydale from Wensley to Garsdale Head plus Walden
and Bishopdale,
Swaledale from Keld to Gunnerside plus Cowgill in Upper Dentdale.

UWNL Xmas Editorial



Surprise! ... it's Christmas

Are you ready? No matter what at stage our preparations for Christmas might be, things will always come along to surprise us.

I remember quite vividly the surprise I had one Christmas morning when I excitedly unwrapped a carpentry set from my mum and dad. I also remember the surprise *they* had when they discovered I had sawn halfway through the dining room table leg just as they were bringing out the Turkey!

Christmas still holds surprises for me. I love the surprise of the Christmas TV adverts as we're treated to the diverse range of what our retailers think we will find attractive and important this Christmas. '*We've got Christmas covered!*' proclaims one confidently - Hmmm. I wonder?

As I scrolled my way through the festive video feast it was interesting to see some common themes appearing; the need for careful preparation, how to deal with unexpected problems, value for money, the joy of sharing and the challenge of finding the perfect gift all featured. Once again the images of plenty, combined with a high level of indulgence, is a common denominator and one that seems to mark our modern understanding of the season.

As the cost of living continues to dominate UK household budgets and economic advisors imply that many of us will be downsizing our celebrations and festive spending this year, do these images bear any reality to what is actually happening? Did they ever?

Are we able to enjoy Christmas without responding to the massive commercial hype? Perhaps the economic situation can help create the opportunity for us to re-examine *what* we do and *why* we do it and perhaps ask the timeless question afresh: 'What's it *really* all about'?

Gervase Phinn, the former Yorkshire Dales school inspector has many amusing tales from his visits at Christmas. He tells of one occasion where he overheard a conversation between a mother and the Head-teacher concerning the Nativity play that the children were just about to

perform. So, she asked in all seriousness, "*what's this play all about then?*"

And on another occasion he witnessed a father complaining about the entertainment that he had arrived to see.

*"Tha allus does t'same play every Chris'mas. Tha needs to do summat different!"**

I wonder if it's not the play that needs changing but perhaps our attitude towards it. We can think we know a story so well that we actually miss what it's really all about. So ... what is Christmas all about? Can it still hold a surprise?

The short answer is YES ... but do we want it to? Let me try and explain from a Christian Biblical perspective. Christmas is nothing unless it speaks to us of **Love** and **Hope**. Love and hope for now *and* Love and Hope for the future and in a world that is so desperately in need of both the Christian belief and (crucially) the Christian experience, is that the birth of Christ changed and *changes* everything. The American Methodist minister Revd Ralph Sockman described it like this: "*The hinge of human history is to be found on the back of a stable door in Bethlehem.*" The world was surprised by the nature of Jesus' arrival. One of the names used to describe him is 'Immanuel', which means '*God with us*'. 'What's Christmas all about? ... It's about God's love.

The carols we will sing tell us that he came for a purpose; to restore a broken relationship with God, to reconnect us, to birth Hope, to shine a light into our world and the way in which we live our lives. In the familiar words from John's Gospel that will be heard again this season, he created an opportunity to transform our identity ^{Jnl 1:12} 'What's Christmas all about? ... It's about God's love.

Back to the school Nativity: "Ya can't be leavin' that Donkey theear. Yull 'ave to move it" said the Innkeeper. "Well, give us a room then ... She's 'avin a babby tha knaws" replied Joseph. "I can't help that" answered the innkeeper, "It's got nowt to do wi' me". "I know", sighed Joseph turning to the audience, "an' it's got nowt to do wi' me neither!"*

Just like the TV adverts we can become so wrapped up in the busyness and the activity of it all that we can so easily lose sight of what it's really all about, where it began and why and

conclude ... 'It's got nowt to do wi' me'.

Scrooge's nephew Fred in Dickens' classic 'A Christmas Carol', is desperate for his uncle to experience the love and joy that is at the heart of the Christmas message and he never gives up hope that one day he will. The 'surprise' of Christmas remains for us all to experience but we have to *want* to do so. Sadly, in our modern world so many people live their lives with a sense of isolation and loneliness. They may be surrounded by activity but still feel that nobody knows, nobody *wants* to know and that nobody cares. That name given to the baby whose birth is at the centre of our activity reminds us that this is not true and, most importantly, it need never be so.

So, wherever you are and whatever you might be doing this Christmas, I invite you to take some time from your crowded schedule and consider why billions of people alive right now believe that God came to earth that night to change things for the better and that we might know him, close up and personal. Why not pay a visit to a church service in your area and discover and experience some more?

Until next time: Sarah and I wish you all a very **Happy Christmas**. May you know the peace and the presence of Immanuel 'God with us' in your hearts and in our homes this Christmas and His blessing in the New Year. Here's to a Christmas surprise!

Per Dave.

* *Extract from 'A Wayne in a Manger' – Gervase Phinn. Penguin Books.*

Reg Fagg Trophy Winners

The winner of the Reg Fagg Trophy was Jack Fremlin whose winning entry is our cover picture this month.

Nursery and Reception Joint Winners: Winnie Calvert and Teddy Calvert

Class 1 Winner: Skye Hetin

Class 2 Winner: Bob Fremlin

With a very high standard judging was very difficult. Well done to all the entrants.

The accuracy, appropriateness or legitimacy of any product or service advertised in this publication is the sole responsibility of the advertiser and not of the Upper Wensleydale Newsletter.



Eunice the Ewe

In November I was hiding in the Wensleydale Creamery advert on page 24. And the lucky winner of the £10 prize is Molly Day of Stokesley who has donated her £10 to Hawes Christmas lights.

Where am I this month? To enter for the £10 prize, please include your postal address if replying by email.

Submission of articles

Please note that all submissions should comply with current copyright legislation. If submitted articles are not the original work of the person submitting them, then all relevant permission should be sought and granted for reproduction.

**DEADLINE FOR COPY FOR THE
NEXT ISSUE IS**

**TUESDAY JANUARY 20TH
PUBLISHED ON JAN 28th**

In This Issue

Page

| | |
|---------------------------------|----|
| Guest Editorial | 2 |
| Competition | 4 |
| Thorney Mire Notes | 5 |
| Ed Gardener | 8 |
| Hawes Christmas Lights | 9 |
| Hawes Panto | 10 |
| Hawes Market House Appeal | 12 |
| Askrigg Christmas Tree Festival | 15 |
| Feather and Fern Award | 17 |
| Hawes Pharmacy Opening Hours | 19 |
| What's On | 20 |
| DCM News | 21 |
| Mystery Picture | 22 |
| Heavens Above | 28 |
| Sycamore Hall—History | 34 |
| Wensleydale Concert Series | 35 |
| 'The George' at Thoralby | 37 |
| Hawes School News | 41 |
| Swaledale Festival | 43 |
| Rail Diversions | 43 |

December Competition

Here's something to keep the brain cells occupied over Christmas. Can you unravel these anagrams of well known charities.

- 1 Stir Shod Scriber
- 2 Veil drench haste
- 3 Hence dinner lid
- 4 Hot fed after shiner
- 5 Hat malty aversion
- 7 Fir lice come
- 8 I.e. manual crab
- 9 Draw I ate
- 10 Chucker nears care
11. I can't hold forcer in
- 12 Make Untied

Please send in your answers to arrive by **Tuesday, January 20th**. Remember to include the details of your nominated charity which will receive the £50 prize should you win.

November Competition Answers

1. Open and shut case
2. No two ways about it
3. Criminal
4. Too big to ignore
5. For ever and ever
6. One foot in the grave
7. Right between the eyes
8. Bad spell of weather
9. Middle age spread
10. In one ear and out the other
11. A small world after all
12. Income tax
13. Three men in a boat
14. Gold rush
15. Who's in charge
16. Thin line between love and hate
17. Honour among thieves
18. Nothing to worry about
19. Painless Operation
20. Grave Error

Only a few correct entries this month. The winning entry chosen at random was from Rob Elphick of Burtersett whose nominated charity to receive the £50 prize is Cancer Research UK.

Upper Wensleydale Ladies Luncheon Club

The Luncheon Club will meet on **Wednesday, December 17th** at the Street Head Inn at **noon for 12.30pm** lunch. Entertainment from Colin Bailey.

Why not come along and join us, we are a small group and would make you very welcome. Anyone wishing to join please contact **Ray Wilkinson** on **01969 663613**, or **Sue Ryding** on **01969 663551**.

SANDERSON & CO. FUNERAL DIRECTORS

A complete and caring funeral service
provided by an independent
family business established in 1879.



For personal and
dignified attention
in time of need
please contact

Richard Sanderson
Leyburn Business Park DL8 5QA

Tel: 01969 623143 (24hrs)

Mobile: 07710 652348

Email: sandersonandcoleyburn@gmail.com

We offer Golden Charter Pre-payment Funeral
Plans Please ask for further (written) details.

Drop-off points and contacts

For news, articles, reports, letters, What's On dates, competition entries, suggestions and comments:- All 01969 numbers unless stated.

| | | |
|--------------------------------------|-------------------------------------|-----------------|
| Hawes: | Community Office | 667400 |
| Bainbridge: | Sylvia Crookes, 3, Bainside | 650525 |
| Askrigg: | Sykes Shop, | 650535 |
| Carperby: | Anthony Abraham Hall Garth | 663243 |
| West Burton: | Nadine Bell, Margarets Cottage | 663559 |
| Aysgarth: | Hamilton's Tearoom | 663423 |
| Redmire: | Kevin Davis Westholme | 624165 |
| Thoralby: | Neil Piper | 663747 |
| West Witton | Christine Barker, Chestnut Garth | 624934 |
| Preston and Castle Bolton | Alastair McLachlan | 07817 709167 |

Notes From Thorney Mire

Autumn

In the middle of September there were nine swallows sitting on the wires waiting to fly south. Not as many as some years but, an improvement on the four I saw last year. At the end of September I heard the first few notes of a curlew's call. For a couple of seconds I thought it was a curlew late in returning to the coast, but remembering that I had been fooled like this before, I looked up to see two starlings sitting on the wires. I watched and caught one in the act of its curlew impersonation. They were then joined by two more starlings. The second starling, now having an audience and not to be outdone by its companion was doing a quick fire, chit, chit, chit sound like the alarm cry of another bird. It is thought that some birds impersonate other species, often larger than themselves to frighten away predators, often from the nesting area. It is also thought that starlings impersonate other birds because it makes them look more intelligent and attractive to the females. Whether this is true or not I wouldn't like to say. You would have to ask a female starling. We have a very small bird flitting in and out of the large cypress tree. It doesn't stay in view for very long, but from its size I think it must be a goldcrest.

On a recent visit to Switzerland, walking through a wood by the side of a lake, I had a close encounter with some red squirrels. These squirrels were the same size as our red squirrels, but their fur was much darker, almost black. They were very tame and came right up to our feet to look at us. They were not afraid, they equated humans with food as the locals were taking bags of food for them. They were also very cheeky and tried to climb into one lady's bag which was on the ground, because they knew there was food in there. Fortunately, at the moment red squirrels are not endangered in Switzerland because grey squirrels are not widely distributed in the country, but they are expected to spread from neighbouring Italy over the coming years.

It was nice to see our red squirrels when I returned home. Scampering under the washing line one day and on another day, running on the top of the wall. Was this the same squirrel? I got my answer one morning when I saw two squirrels together by the barn. They were not aggressive towards each other, but happily playing together, jumping around, climbing up

and down the ash tree, full of energy before leaping over the gate and disappearing into the field.

I was hoping to see Red Admiral butterflies on the sedum in early Autumn, but this was not to be. It rained a lot in September so this is maybe why we didn't have large numbers of them like last year. Fashions, fads and ideas come and go, but the one I am embracing at the moment is, not to make your garden too tidy. After tidying up the courtyard I had missed cutting down the mint and I'm so glad I did because we had several small tortoiseshell butterflies visiting the pink flowers.

Looking through the window in the middle of October, just as it was getting dark, I saw an indistinguishable shape of something motionless, sitting on top of the wheelie bin. At first I thought it was a dead rabbit. How a rabbit, especially one in the last throes of life could climb onto a wheelie bin never occurred to me at the time! When the bundle of what turned out to be feathers eventually moved, it revealed itself to be a large baby bird. In spite of the fading light I took a photograph of it and later identified it as a wood pigeon. Thinking that the middle of October was a little late for a baby bird I discovered that wood pigeons have a long breeding season, from February to November. The pairs mate for life and both the female and male help rear the chick, feeding them on pigeon "milk" which is regurgitated from the crop. I have seen collared doves do this and it is not a pretty sight. The female never lays more than two eggs in a clutch, but if these eggs are destroyed she will lay again and can have up to three broods a year. They build flimsy nests of twigs and sometimes the eggs can be seen from below.

They have a dry diet so drink a lot of water. Unlike other birds which scoop up water and throw their heads back and let the water run down their throats, wood pigeons use their beak like a straw and suck up the water. They are also known to be intelligent birds and can recognise themselves in a mirror and human faces. Now, it's not that I don't like wood pigeons, but I don't like them destroying my plants. If they are as intelligent as they are supposed to be, the ones which frequent our garden will by now recognise my face and know that my expression is saying "Go back to the wood", or words to that effect.

Sylvia Turner

Bellerby Study Group Spring Programme 2026

Our programme starts on **January 21st** when Georgina Sale talks about Lady Isobel Chaytor. Born in 1890, Isobel started life as a Darlington's baker's daughter; met and married one of the Chaytor family from Croft and moved into Croft Hall and Witton Castle. She was a daring and some would say fearless woman, who at the age of 42 survived a flight to Australia in an open topped Gypsy Moth. Along the way she lived the 'high life' and had many adventures. A life if not well lived, was lived to the full.

And now for something completely different; on **January 28th**, Chris Freeman in 'History by Design' takes a sideways look at how history and nature have shaped some of the things we often wonder about. Like why is a CD 12cms and not the intended 10cms, which was more compact? And why are the space shuttle booster rockets long and thin when the engineers wanted them to be short and fat? All will be revealed.

Our meetings start at **7.30pm** in Bellerby Memorial Hall, Church Street DL8 5BX and are followed by free refreshments and a time to chat. Membership for eight talks is £15, visitors are welcome for £3 per talk. For more information contact **Judy Asher 07968 596676**.

Hawes Junction Chapel

Mount Zion, Garsdale Head, LA10 5PT

Sunday, December 14th at 2.30pm

Carols by Candlelight with

Rev. Andy Burgess, Vicar of Sedbergh

Plus Askrigg Ladies Sing for Pleasure

Light refreshments will be served
at the close.

ANDREW
HAWKINS BUILDING
CONSTRUCTION CONTRACTORS

NEW BUILDS | EXTENSIONS
BARN CONVERSIONS | ROOFING & GROUNDWORKS
APPROVED DAMP PROOFING & REMEDIAL
TREATMENT SPECIALISTS

Tel: 0800 002 9779

Email: hawkinsbuilder@hotmail.com

Unit 5 Harmsby Business Park, Harmsby Road, Leyburn, North Yorkshire, DL8 5QA

Dales Charity Bingo Report

We have 2 bingo nights in December, the first in Askrigg, in support of the Salvation Army Christmas Appeal on **Friday, December 5th** and the second in Hawes in aid of the Burtsett Village Hall on **Wednesday, December 10th**.

Please see our advert on page 29. We have a few seats available in our vehicles going to Askrigg on December 5th if anyone would like a ride.

The 2026 bingo nights are all now locked in : **Friday, January 16th** – in Bainbridge Village Hall – see advert on page 29. The bingo nights from February to December are all on the 2nd Wednesday of the month: - **February 11th, March 11th, April 8th, May 13th, June 10th, July 8th, August 12th, September 9th, October 14th, November 11th and December 9th**.

If anyone would like to book one of these dates for a bingo fund raising event next year, please let us know as the dates will be assigned on a first come basis. We have 4 charities allocated so far.

And lastly, thank you and Merry Christmas to all who supported us this year, charities, players, the guest raffle ticket callers, everyone who has donated prizes and to the bingo buddies who so generously give their time to make these nights possible – Liz Lawson, Linda and Stephen Reynolds, Lesley and Bob Barber, Noel Barrett, Mark Murphy, Suzanne Excel, Maureen Stephens and Jan Shipard. None of it would have been possible without everyone one of you and our wonderful community.

If you would like to know more, please email us at dalescharitybingo@gmail.com.

Gayle Club

At the Bingo night held on November 12th there was a near record number of people coming along to enjoy the night and support the Gayle Institute / Club. The raffle table was very well laden, and the raffle callers Lily and Olivia did a great job calling out the winning tickets.

£440 was raised for Gayle Club funds. Thank you to everyone who attended and/or donated raffle prizes. Special thanks to the Dales Charity Bingo team for all they do throughout the year.

The Farmer Network to support the Next Generation in the Dales

For several years the Farmer Network has created and facilitated unique programmes designed to support young people at the start of their farming career. Now in the current climate with agricultural policies, new environmental schemes and the direction of UK food production unclear at this moment in time, it has never been as important to support younger farmers to enable the next generation to gain a foothold in the industry.

This winter The Yorkshire Dales Farmer Network with funding support from the Yorkshire Dales National Park Farming in Protected Landscapes Fund, is about to begin a new and wide-ranging programme to support the next generation of farmers. Ten Business Support vouchers worth up to £500 are immediately available to be spent on 'one to one' support. This might include looking at farm diversification, learning new practical farming skills or business advice. Farmers will be offered mentoring support from experienced advisors some of whom can share their own experiences.

The Farmer Network will also be running two on-farm events starting on **December 8th** at High Hall Farm, Croglin in Cumbria. Here the Stobart family will showcase their many diversifications, share their business ethos behind their farming systems, and overall farm profitability. A minibus will provide transport leaving Hawes at **10.00am** on the day.



WOODCRAFT STUDIO and TIMBER SERVICES

formerly Gayle Mill Trust

Gates, posts and fencing to suit all your needs.
Timber sales of larch and local hardwoods cut
and delivered for your own project.

Mobile sawmill to cut your own trees into
planks or beams.

Seasonal firewood delivered throughout the
Dales

Ring **07967 844636** for further details

The second event will be decided by the group themselves and could again be business focussed or may cover animal health or a policy and schemes update when more information is released by the government in future.

Carol Moffat is coordinating the programme for the Yorkshire Dales Farmer Network and says, "We are keen to work with the young farmers to understand their individual business needs and to support them throughout the programme. We will develop a network of young farmers wanting to progress a farming related business and help them to communicate with each other. This will include signposting to opportunities for funding, training and equipment as required".

Firewood Seasoned hardwood logs

Tel: 01969 662692

Mob: 07970 629227



For those of you who haven't visited Hawes recently here is the latest Christmas effort of the Hawes Yarnbombers to be found on the bridge opposite the Conservative Club.

Purple Patch

The new addition, a tiny, purple hazel tree, will eventually be pushing its chest out at the head of the garden. Sited in an elevated position looking across to Whitfield Gill, it's replacing a golden elm, which seemed like a good planting idea at the time; four years on and it's getting far too big so now's the time for removal. Cutting hard back and getting as much root as possible may guarantee survival – if you have room for a freebie give me a shout, otherwise it's going to be relocated in a farmer's field down by the river. The *Ulmus aurea* makes an elegant specimen in summer, with those long, graceful branches laden with bright gold foliage; a sure-fire, attractive addition wherever it ends up, so don't be shy.

Corylus purpurea, the hazel, has all the attributes to do well in the new colour scheme: damson dark leaves, striking autumn colour and, on a naively optimistic note, a good crop of hazelnuts in the season. This specimen I've standardized, cutting off any lower branches to ensure a single trunk to grow on as a 15ft tree. It's to be planted in what is, at the moment, a 'pending' border, an area stuffed with sad transients, lost souls all searching for a permanent location; here numerous weedy sprigs of berberis desperate for a sunny, fertile site, there, four orphan golden privet cuttings from last year, all anxious to join their grown-up family in a recently planted hedge – no worries, your time will come.

Skip a month and all's complete; the purple hazel's master of all it surveys, the elm absconded so sorry for being so fickle, scrub that offer of a freebie, and all those pining transients have been re-homed. I've packed in clumps of fearsome *Lysimachia* 'Firecracker', a two-foot-high herbaceous terminator which will bully its way around the border, hunting down and dispatching any open space. Those dark leaves contrast pleasingly with sprays of long lasting bright yellow flowers – however, that thuggish streak will meet its match in an unruly gang of stout, woody fuchsias I've accumulated over the years, all discarded from hanging baskets and troughs. They seem perfectly hardy in recent winters so how about a bank of them; all that purple, red and blue with a sprinkling of yellow – now you're talking.

I've left three large gaps to fill with contrasting shrubs. In the corner will be the

smoke bush, *Cotinus* 'Royal Purple', in summer boasting a mist of grey blooms atop deep burgundy foliage. This is as good as it gets in shrub world, believe me; I've had my eye on such a specimen in deepest Brentwood when wandering down to pick up the grandkids; a right pair of confirmed non gardeners they are, yet even they comment on Old Smokey's exhibition.

Two golden shrubs I'll plant to emphasize all that purple are a golden *Berberis* 'aurea' and *Spirea* 'goldflame'. *Berberis* are out for blood with all those punishing thorns so that's well to the rear; let's be greedy and have an extra spiraea as they're daintier and perhaps lower growing, so we'll stick one down at the front. To oppose aforementioned firecracker's aggression, I'm using clumps of *Hosta* 'Gold Standard' for a mass explosion of colour amongst all the gloom. Bigger than your average cabbage, these will illuminate all throughout the growing time and also save on weeding; hostas can end up carpeting and that's good news for us creaky back types.

I considered the darker and brighter elderberries which I do love, but they're rapid growers and far too large for this smaller border – 'Sutherland Gold' and 'Black Lace' are outstanding and deserve their own article, so I'll file that away for later.

So why purple, what's the big attraction? Well, it's always been a favourite ever since childhood Christmases when that big bass drum sized tin of 'Quality Street' appeared. I was a sneaky kid and would spend half an hour rooting around for the purple ones before anyone else got a look in... a hazelnut soaking in soft toffee smothered in milk chocolate, yummy; usually six per tin there was, oh my poor tum.

Ed Gardener



Hamilton's Tea Room At Yoredale House, Aysgarth

Licensed Tea Room

HOMEMADE FOOD,

Light Lunches, Clotted Cream Teas

Open Feb-Nov, 10.30am - 4.30pm

Closed Mondays and Tuesdays

Tel: 01969 663423

info@yoredalehouse.co.uk

Hawes Christmas Lights

Saturday, December 6th

From **10.00am** onwards we will be situated outside The Bay Tree Café, in the Market Place. With a Tombola and a couple of entertaining games. We hope you will have time to come and see us.

Santa's Sleigh Route

Santa will arrive opposite Allen's (Hawes Central) at **4.30pm**.

The Route will be from Hawes Central back down the Holme, out of Hawes to Old Gayle Lane.

Follow Old Gayle Lane to Gayle Bridge,

To Little Ings Entrance (Flats) to Little Ings.

Entrance (Playground).

To Gayle Lane (Entrance Car Park).

Down Gayle Lane to Town Head onto Hawes.

Santa will stop outside Cocketts Hotel (Hawes Central) for 30 minutes giving a photo opportunity for anyone. Gifts will be given out en route – and at the end.

Stops

Estimated times

| | |
|--|--------------------|
| Opposite Allen's, with Hawes Silver Band and Community Carol Singing | 4.00-4.30pm |
| Santa arrives in the Market Place | 4.30pm |
| Town Foot Car Park | 4.35pm |
| Herriot's | 4.40pm |
| Auction Mart | 4.50pm |
| Gayle Bridge | 5.00pm |
| Little Ings Entrance (Flats) | 5.05pm |
| Little Ings Entrance (Playground) | 5.10pm |
| Creamery Entrance | 5.15pm |
| Gayle Lane (Entrance Car Park) | 5.20pm |
| Cocketts Hotel | 5.30-6.00pm |

There will also be fireworks on Santa's arrival, from **4.30pm**, we hope your pets are not too worried.

We will be taking down the Christmas displays on **Wednesday, January 7th**. If you can help please meet at Town Foot at **8.30am**.

Reconnecting the Floodplain at Hauxwell Estate

Ousewem has partnered with Hauxwell Estate near Leyburn to restore a watercourse to its floodplain for the first time in more than a century, creating a new nine-hectare wetland and bringing back the meanders and habitats that once shaped the landscape.

The project will store around 2,992 cubic meters of water – more than an Olympic-sized swimming pool – helping to reduce flood risk and create new homes for wildlife including wading birds and amphibians.

"It's been a real pleasure to work with Ousewem on this project. The new wetland fits perfectly with our ambition to manage the estate in a more wildlife-friendly way," said Kevin Birch, Estate Manager.

Will Dalton, of Hauxwell Estate, added: "The wetland will be transformational to the landscape and nature restoration in the heart of the estate and really enhances what we're trying to achieve with regenerative farming and woodland creation. The Ousewem team and Kevin have worked really hard to design and create a fantastic project and I'm very grateful for the opportunity we've had to do this."

SCOTT'S HALL & BIRTLES SOLICITORS

**For all your legal requirements
offering a full range of services.**

**Hawes DL8 3QL, Tel 667171
and at Leyburn, Golden Lion Yard,
DL8 5AS, Tel 01969 625526.**

email; info@shblegal.co.uk

**Regulated and authorised by the
Solicitors Regulation Authority**

Solid Joinery Solutions

All aspects of joinery and carpentry undertaken.
Bespoke joinery solutions made to your
requirements.

Covering all Yorkshire Dales and surrounding
areas

Contact Paul for a free, no obligation quote
on **07980 167987**

Email: enquiries@solidjoinerysolutions.co.uk

Web: www.solidjoinerysolutions.co.uk



Hawes Amateur Operatic Society

It's Panto Time Again!

We are busy rehearsing for our next production, a pantomime by Limelight Scripts, Robinson Crusoe and the Pirates. Adapted, produced and directed by our very own Amy Cockett, it will be performed at Hawes Market House from **Wednesday, January 28th to Saturday, January 31st 2026** - oh yes, it will!

This hilarious show tells the tale of Robinson Crusoe, his family and friends sailing on Captain Codpiece's ship, The Jolly Pollock, which gets attacked by Redbeard and his pirates - boo!! It includes sailors, pirates, music, a giant man-eating stinkwort plant and lots of surprises, fun and farce to suit all age ranges.

Souvenir programme adverts: If any local business has not received an email or letter from us and would like to take out a half-page advert, please email haos.sar@proton.me for an application form. We are asking for a minimum £30 donation.

Tickets will be available from **December 1st** via: <https://www.ticketsource.co.uk/hawes-pantomime>. This is the best way of obtaining the performance of choice. There are various options for Adult and U16 tickets and bundles including souvenir programme, ice-cream and sweets.

The programme will be £2 in advance (£2.50 on the door) and will have a lucky number for a draw taking place during the Saturday evening performance - good luck!

Each show will have wheelchair space available. For those lovely peeps without internet access, we strongly suggest you ask family or friends to go online on your behalf, or, as a last resort, as we cannot guarantee your choice will be available, please get someone to email haos.sar@proton.me and leave your name and contact details for us to get back to you.

We thank you for your ongoing support and wish everybody a Happy Christmas and a Peaceful Panto New Year.

Hawes Amateur Operatic Society



Protecting Birds of Prey – Inside the Work of UK Wildlife Crime Policing

Following on from its 'Eyes on the Skies' campaign launch in October (watch at: www.youtube.com/@friendsofthedales), Friends of the Dales next campaign event will be an online talk taking place on **Tuesday, January 27th, 5.30pm – 7.00pm**.

Join Detective Inspector Mark Harrison of the UK National Wildlife Crime Unit for insight into the real-world challenges of protecting vulnerable and endangered birds of prey in North Yorkshire.

In this exclusive online talk, Mark will share true stories from the frontline of wildlife crime policing, revealing the realities, challenges and successes faced by officers working to safeguard some of our most at-risk species.

He will also address common misconceptions on the role of policing in tackling birds of prey persecution. Expect an honest and informative discussion about:

- the key challenges in investigating bird of prey crimes;
- what's working well and where improvements are needed;
- future plans, strategies, and innovative policing tactics;
- and, a look at a few fascinating real-life cases.

Book your free place here: www.friendsofthedales.org.uk/events. You can also sign up to Friends of the Dales monthly e-newsletter on its website homepage to be kept up to date with all Eyes on the Skies campaign developments and future events.

Thornton Rust Institute

Christmas Wreaths

Hand-made natural Christmas wreaths. £20. All money for charity. Please phone Paul Raven on **07786 353987** to order your festive wreath.

Bainbridge Motorfest

It seems a long time ago now, but on August 17th, Bainbridge and District Motor Club held their annual MotorFest on the village green. It was a glorious day with lovely weather and a good crowd of visitors.

A small group of volunteers were asked to provide refreshments for this event and did very well, selling out of just about everything available! A grand total of £270.50 was raised which has now been presented to the Bainbridge Christmas Lights committee. This will help to ensure that this year's display will be even better than previous years.

The official 'switch-on' of this year's lights will take place on **Sunday, December 7th, 4.00pm for 4.30pm** on the village green opposite the Rose and Crown. Come along and sing some carols.

STURDY TRAVEL

INDEPENDENT TRAVEL SPECIALISTS

Now at Toll House (Next to Spar)

Market Place, Hawes DL8 5QX

Also at 1, Golden Yard, Market Place,
Leyburn, DL8 5AS

For all your travel needs, home and
abroad

Call: 01677 422826

Email: robert@bakewelltravel.co.uk

Part of Bakewell Travel

ABTA No. P8596

Alex Kravchenko

BSc (Hons) MChS

Chiropodist / Podiatrist

Member of the Health Professions Council

Practising at

Yorkshire Foot Clinics
25, Frenchgate, Richmond DL10 4NZ
Bishop Auckland/ Hawes 667449

Clinic Tel 01748 850020

Email: yorkshirefootclinics@yahoo.com

TEASDALE ELECTRICAL

Your local electrician serving the dales
and the surrounding areas

Askrigg

North Yorkshire

Tel - 07814 184974 (Steve)

Email - teasdaleelectrical@icloud.com



Upper Wensleydale Property Services

All aspects of domestic plumbing
and heating work undertaken
Bathroom supply and fitting, wet
room installation and tiling
Heating systems, and oil boilers
and tank installations

**Please contact Malcolm
Grant on 07855 191466**

email: mgwensleydale@gmail.com

McGARRY & Co. Solicitors

**From small personal
matters to larger
commercial transactions,
for personal advice in an
impersonal world.**

Market Place, Hawes,
North Yorkshire DL8 3QS
Telephone No 01969 666290
or email

office@mbmcgarry.co.uk

**Farm and Home visits by
appointment**

Regulated by The Solicitors Regulation Authority
No. 553987

Hawes Market House

Our constant battle to keep the Market House in tip top condition marches ever onwards!

We currently need to repair the floor, which had gone through to the bare boards and needs to be sanded back, resealed with commercial grade sealer and then, so we don't have a revolt from Badminton and Pickleball users, the lines need to be repainted. This is going to cost in the region of £5000.

We are looking at a different way to fundraise for this project and are asking people to sponsor the 315 lines of floorboard that run from the door to the stage. Minimum sponsorship is £5 for 1/3 of a floorboard, a whole board is £15. As a sponsor you will have your name on a board that will be on display in the hall for a year and as a thank you for sponsoring your name will be placed in a hat and you will have the chance to receive £500.

Those of you with mathematical brains will see that the amount that we will raise with the sponsorship doesn't match the amount we need. Daryl and I have been busy fundraising with coffee mornings and jumble sales and will be having a raffle and refreshments at the Saturday Market on **December 6th**.

If you would like to help keep the Market House running and would like to sponsor the floor, please either call in to the Community Office, or The Old Sweetshop with your donation or if you would prefer to pay by BACs the details are:

Hawes Market House

Sort code 20-25-29 Account 40659207

Please use "floor" and your name as a reference.

We hope to have the floor repaired after the Pantomime has finished their 2026 run in February.

Hawes Market House Trustees and Manager

Dales Garage

Services we provide

Exhaust, Diagnostics, Brakes, Welding, MOT, Suspension, Timing Belts, Clutches, Batteries, Tyres, Services. All makes and models.

Unit 2, Hawes Ind Estate, Brunt Acres Road
Hawes DL8 3UZ



www.facebook.com/dalesgarage1

Call – James 07399 513605

Tyler 07376 487776

**Hearing loss shouldn't make
you feel isolated and anxious,
we are here to help.**



**For all your
hearing needs!**

- Hearing test
- Free hearing aid trials
- Ear wax removal
- Tinnitus assessment and therapies
- Hearing aid repairs and servicing

 **Hear & Now**
Independent Hearing & Tinnitus Specialists

CALL 01765 278 744

8 Queen Street, Ripon, North Yorkshire HG4 1ED
info@hearandnowonline.co.uk
www.hearandnowonline.co.uk



Hawes Silver Band

**Hawes Christmas lights
switch on and Christmas
Charity Concert.**

Hawes Christmas Lights switch on. Hawes Market Place **Saturday, December 6th at 4.00pm**. Hawes is rightly proud of its Christmas lights and the band enjoys getting the Christmas festivities off to a melodious and seasonal start.

Hawes Christmas Charity Concert.

The Market Hall, Hawes on **Sunday, December 21st at 3.00pm**. The band gets into the Christmas spirit and helps you to do the same with a concert of carols and other seasonal music. No entry charge but charitable donations requested.

The band plays for local events and celebrations and enquiries are welcome, see hawessilverband.org.uk. New players with any level of skill on a brass instrument are welcome at our regular practice sessions, 7.30pm at the Market House, Hawes most Sunday evenings. We can also help complete beginners to maintain the great tradition of brass banding in the Dales. Instruments can be loaned. Contact Sue Woof at bandswoof@gmail.com.

Wensleydale Railway - Christmas Gift Ideas

Looking for Christmas gift ideas that are a bit different? Why not choose a gift that's not only unique but one that helps your railway too? In this post we offer you a few gift ideas that will make someone's Christmas or just your own! Please don't forget to join and use Easyfundraising when you do your online shopping. We've raised over £9,000 to-date and it costs you nothing to use: <https://www.easyfundraising.org.uk/causes/wrat/>.

The Polar Express: This Christmas, treat the family to a magical journey on board the Polar Express Train ride at Wensleydale Railway. Step into a world of enchantment where the beloved holiday story comes to life! Tickets available at <https://yorkshiredalesthepolarexpressride.com/>.

Steam and Diesel Special Trains (28th-30th December). End the year in style with a mince pie and hot drink on one of our steam and diesel hauled trips through the Yorkshire Dales! The **28th December** train will be diesel hauled. The **29th and 30th** trains will be steam hauled.

Afternoon Teas: Enjoy a scenic journey through the Yorkshire Dales whilst being served

a glass of fizz and a selection of sandwiches, scones and cakes on vintage china with unlimited tea and coffee. 2026 dates and booking information coming soon.

Fish and Chips Trains: Experience a scenic journey through the Yorkshire Dales whilst enjoying locally supplied fish and chips, mushy peas, bread and butter and unlimited tea or coffee served at your table. 2026 dates and booking information coming soon.

Driver Experience Days: drive one of our heritage diesels and enjoy the experience of a lifetime - <https://wensleydale-railway.co.uk/driver-experiences/>.

Gift Vouchers: we offer vouchers for a variety of uses including afternoon teas, railway events and our normal service trains. Email admin@wensleydalerailway.co for more information.

Membership: Give the gift of annual membership from only £22. Help secure the railway for future generations to enjoy and get 50% off travel - <https://wensleydale-railway.co.uk/membership-join/>.

For more information, please contact our office at admin@wensleydalerailway.com or call **01677 425805**.

Applegarth Couture

www.applegarthcouture.co.uk

Made to measure
Wedding, evening and daywear,
tailoring and alterations.

**Contact: Rebecca Atkinson,
Aysgarth
01969 629398 or 07521 030870**

DALE HEAD GARAGE

Town Head, Hawes

Tel.01969 667483

Fuel Available 24/7

Your local family owned Coach Operator



**COACH HOLIDAYS and
FULL DAY EXCURSION PROGRAMME**

**Call 015242 41330 for our current brochures or visit
our website to view up and coming Holidays
and Day Trips**

**Email: enquiries@bibbys.co.uk
Website: www.bibbys.co.uk**

WANTED - SCRAP CARS AND COMMERCIALS

FREE collection from all areas.

www.scrapcarmumbria.co.uk

07825 293099

Christmas Concertos and Carols

Sunday, December 7th at 4.00pm

in the Gallery at Tennants Garden Rooms.

Richmond Chamber Orchestra - Director and soloist Philippa Mo with members of the Swale Singers and Richmond Choral Society, conducted by Ben Noble.

North Yorkshire's unique orchestra presents an early celebration of Christmas, a mixture of traditional favourites and less familiar gems.

Baroque music in the first half, with Corelli's Christmas Concerto, Vivaldi's Concerto for 4 Violins, Telemann's Trumpet Concerto and the dance movements from Bach's Suite in B minor. After the interval there's music with a Christmas theme by Vaughan Williams and Florence Price. The singing starts with carols by John Rutter sung by members of the Swale Singers and Richmond Choral Society conducted by Ben Noble, and then finally it's the audience's turn to join in some traditional carols, with some sparkling trumpet descants!

With Michael Atkinson (trumpet), David Francis (harpsichord), Sue Francis (flute) and Georgina Wells (harp).

Tickets £15.00 (Under 18 £5.00), from Tennants Garden Rooms - **01969 621146**, www.tennantsgardenrooms.com.

Tuesday Hawes Fish Market

Also door to door delivery every **Friday**. Pre-order or just turn up on a **Friday** at

Askrigg Stone Cross. **9.30am to 10.45am**

Bainbridge playground. **11.00am to 11.30am**

West Burton **12noon to 12.30pm**

Thornton Rust W.I. Hall **12.45pm to 1.00pm**

Mobile **07711 989590**

Facebook [Hawesfishmarket](https://www.facebook.com/Hawesfishmarket);

Email Hawesfishmarket@gmail.com

FOR ALL YOUR SEWING NEEDS

Contact. Sheila Kearton at

Woodhall, Askrigg

Alterations and custom soft furnishings



**CURTAINS, ROMAN
BLINDS, CUSHIONS
DRESSMAKING AND
REPAIRS**

Tel 01969 663484 or 07800 576925

A New Farmer Network Business Support Scheme for Dales Farmers

Yorkshire Dales farmers thinking of accessing farm business advice from professional organisations may be able to claim a new Farmer Network Farm Business voucher towards the cost of the advice.

This might include legal or accountancy advice on succession planning before the proposed changes to Inheritance Tax rules in April 2026. It could also include advice on how to adapt farm businesses as support payments change, looking at the current farm enterprises and possible re-structuring options.

The Yorkshire Dales National Park is supporting the voucher scheme through the Farming In Protected Landscapes Programme. They will fund 40% of the cost of advice to a maximum value of £500. Farmers within the Yorkshire Dales National Park are invited to apply for a voucher immediately as there is a limited number available.

Farmer Network project manager Carol Moffat says "I would urge any Dales farmers thinking about asking for professional business support to contact me, have a chat and claim a voucher as soon as possible. In these uncertain times, it is important to get the right, trusted advice to ensure a positive future for your farm business and your family".

Carol can be contacted by telephone on **07917 666514** or by emailing: carol@thefarmernetwork.co.uk.



PROUDLY YORKSHIRE FOR 140 YEARS

Throughout the Dales, WDS is your partner for every part of your financial life.

Tax returns, bookkeeping, payroll, business growth, wealth planning—we bring it all together so nothing is missed.

From Making Tax Digital to the latest Budget updates, let our local experts guide you now.

01969 623636

WALTERDAWSON.CO.UK

Accounts Clerk/Receptionist Wanted

J. W. Alderson and Sons, Woodhall Garage,
DL8 3LA
24 hours per week over three days (Monday,
Tuesday, Wednesday).
Start date February 2026. Salary negotiable.
Duties to include:
Customer Service, Diary Management
Purchase and Sales Invoice processing
For more information or to apply please
contact Philip Alderson on **01969 663227**
or woodhall.garage@jwalderson.co.uk

WITHYWOOD STORES West Witton

We Stock Local Produce:

Fresh groceries, bread, dairy, meat, deli,
fruit and veg
Eggs, West Witton honey.
A selection of wines, local ales,
takeaway coffee,
newspapers, magazines, stationery and greetings cards.
Selection of household / Diy items. New lines constantly added.
Please support your village shops, to keep them secure for the
future.

Opening: Mon-Friday 8 am - 6 pm
Saturday 8 am - 6 pm
Sundays 8 am - 12 noon

withywoodstores@mail.com
withywoodstore.co.uk

01969 326484



**FREE
QUOTES**

**Carpets • Laminates • Vinyls • LVT
Solid & Engineered Wood • Accessories**

For All Of Your Flooring Needs!

NH Flooring in Richmond can fit quality flooring
to any Houses, Apartments, Offices, Holiday Lets,
Hotels, Pubs, Vans and anywhere else you want it.

We offer a complete flooring service including:

Supplying, Fitting, Screeding & Levelling,
Repairing, Uplift & Removals, Trimming,
Edge Whipping, Cladding and much more.

NH Flooring - Richmond

www.nhflooring.co.uk **01748 822834**
Unit 6 Borough Court, Borough Road, Richmond. DL10 4SX

ST OSWALD'S CHURCH CHRISTMAS TREE FESTIVAL

Sunday 14th December at 5pm
Community Christingle Service and Christmas Tree
Festival light big switch on.

Monday 15th December at 7pm
'A Christmas Cracker' - Concert featuring Mal
Carruthers, Amy Cockett, Askriigg Handbells and
Rev Dave. Refreshments

Tuesday 16th December 4-6pm
Have a Hot Chocolate and cake, or Mulled Wine and a
mince pie whilst you wander amongst the trees

Wednesday 17th December 7.30pm
An Evening of Christmas Music - Askriigg Ladies Sing for
Pleasure with guests from the East Witton Male Voice
Choir and carols for all - Refreshments Available

Thursday 18th December 12-2pm
Come and enjoy a Soup Lunch

Friday 19th December 6-8pm
View the Christmas Trees whilst listening to Mal
Carruthers playing music on the Church Organ.
Refreshments Available

Saturday 20th December at 5pm
Candlelight Evening Prayer

Sunday 21st December at 9am
Book of Common Prayer Communion

Christmas Eve
'Carols on the Cobbles' at 5pm
Holy Communion at 11.30pm

WANTED

Records & Music Memorabilia

All types of Music Wanted

Paul; Tel 01748 825672

Mob 07774 070875

Email: p.c.b@talktalk.net

Better Health Massage

Mobile Therapist, 8am to 8pm, 7days
Improve overall general well being, inside and out.

Ruth BoddBy MFHT, ITEC Dip.
Massage

ruth@betterhealthmassage.co.uk



Fully qualified and insured
07773 781803

www.betterhealthmassage.co.uk



Saturday Evening With Movie Music - Part 3

With two previous 'Music from The Movies' evenings already enjoyed, the packed audience were wondering excitedly how this next offering could possibly be as successful as numbers one and two, and would there be anything new in the format and content of the evening's entertainment?

Well, the 'Musical Trinity' of Mal Carruthers, Amy Cockett and Rev Dave served up a feast of film themes old and new, along with some cutting-edge features in the show. The audio/visual link between the pieces – informing us of the choice and details of each one – was shot live with Mal and Amy at the team's Planning Headquarters - 'The Green Dragon' at Hardraw. (I have been informed that much time was spent there, ensuring that all aspects of the musical offering were fully covered.)

The opening items on the menu included pieces from 'Star Wars', 'Love Actually' and 'From Russia with Love' then we had one of those 'curved ball' moments, which really surprised and delighted the assembled throng. For the performance of 'I See the Light' from 'Tangled', both Amy and Rev Dave took up

their positions on the stage with Mal commencing accompaniment on keyboard and Amy singing the first bars. Then, amazingly, Mal left the keyboard (which was still performing musical support), encouraged Rev Dave away from his microphone and proceeded to duet with Amy himself. Despite having been informed that his voice was 'less than adequate', the experience proved to be most certainly 'not objectionable', and perhaps a new 'Star is Born'.



The rest of the programme gave offerings from composers including Ennio Morricone, Kate Bush, Vangelis and Irving Berlin, to name but a few, and all were delivered impeccably and professionally by our talented triumvirate. As the evening's efforts were all co-ordinated towards boosting the 'Organ Restoration Fund', it was fitting that Mal ended the programme on the 'Old Girl' with his favourite - the theme from 'The Magnificent Seven', played whilst showing clips from the film on the screen.

The performers' efforts were greeted with wild applause, whistles and cheers by a warm and appreciative audience, and those present witnessed yet another evening of 'five star' entertainment and will be wondering how their enjoyment can be piqued any further. We'll just have to make sure we're there at 'Music from The Movies 4'.

Peter Summers



Visitor Centre Open Daily

Festive Cheesy Afternoon Tea and Christmas Specials

Christmas Shopping Evening

18th Dec 5-8pm - Calvert's open till 7pm

From 5th JANUARY

Coffee Shop

£10 Winter Warmer Offers:

Soup, Scone, Drink or
Cheese on Toast, Soup, Drink
2 x scones and tea for 2 £12.95

See website for more info

Yorkshire Wensleydale Cheese Experience

Children Free | Adults ½ Price

wensleydale.co.uk

Wensleydale Tournament

March 9th to 20th.

Entries for the Wensleydale Tournament should reach the secretary by **January 31st** please. The syllabus is available on our website or from Hawes Community Centre, as well as from Hewsons of Leyburn.

We would like to wish everyone a joyful Christmas and a peaceful New Year.

Feather and Fern Wins Award

Hawes Florist, Feather and Fern has been announced as the Yorkshire and NE Regional Winner at The Wedding Industry Awards 2026 in the Wedding Florist of the Year category. Regional Winners now go through to the National Final in Liverpool in January 2026.



Shannon Beth Acton, owner of Feather and Fern says "I am deeply honoured to have been named a Regional Finalist in The Wedding Industry Awards 2026 for Yorkshire and the North East. As a young, self-trained florist, having set my business up in lockdown to now

receive this recognition is both humbling and incredibly meaningful. Working with couples to design and create their wedding florals is truly a dream come true, and to have been nominated and voted for by my brides and grooms is an honour beyond words. Their trust and support inspire me every day to continue growing, creating, and bringing each couple's vision to life."

"TWIA is the most rigorous, respected and coveted award in the UK wedding industry so the regional Winners really are at the top of their game," says Founder of TWIA, Damian Bailey. "The competition is tough, the standards very high indeed, but thanks to over 26,747 client votes and our panel of more than 160 expert judges, the Regional Winners have risen to the top in an industry that absolutely demands the best."



Registered
Heating
Business



J.Parfitt Plumbing & Heating Ltd

All aspects of domestic / commercial plumbing and heating work undertaken

Phone: **01969 650665**

Mobile: **07882 005261**

www.parfittplumbing.co.uk

S Peacock

Woodwork and Decorating

- Fitting of skirting/architrave, doors, shelving
- Wood panelling •Bespoke Furniture
- Painting •Wallpapering

Contact Shaun on: **07794 246392**

Email: shaunpeacock1983@gmail.com



Seasoned Firewood Logs For Sale

Hardwood and Softwood available.
Bulk Bags, Bulk Loads and smaller bags available, also kindling bags.
Can deliver locally – Hawes Area

01969 667916 after 5.00pm

Mobile: 07974 507825

any time; P.O.A

JOHN & TED DINSDALE

Builders ~ Roofers ~ Renovations ~ Extensions

All aspects of property maintenance.

Fireplaces, Wood Burners supplied and fitted

01969 667 718 ~ 07511 424 865

MFW Aga & Boiler Services

Specialising in the servicing of Aga / Rayburn cookers and domestic oil boilers.

All Dales area covered

For service please contact Mike on:

Phone: **01609 779751** Mobile: **07731 349276**

Thoraby Snowdrop Trail

Thoraby village has devised a Snowdrop walk around the village to help attract visitors in support of their newly re-opened pub.

The walk is around 1.25 miles with the option of extending the walk for a further 1.5 miles. The walk is down lanes and across fields, with uneven ground in places, so boots are recommended. There are some stiles and narrow gaps in walls to pass through.

Car parking is available behind the village hall, opposite the George Inn. A map and directions will be available near the car park. Just follow the black signs with a white snowdrop logo.

Snowdrops usually flower late January/early February and last for about six weeks, but it all depends on the weather. So why not beat the winter blues and enjoy a walk around Thoraby, and visit our local pub.

Kathy Fawcett
Financial Adviser



EMERALD
ASSOCIATES

01969 624242  07866 132787

Christmas Choir Concerts

Askrigg Ladies Sing for Pleasure at Marsett Christmas Sing a Long in Bainbridge Village Hall on **Sunday, December 7th at 2.30pm**. Light refreshments at the close. Collection for Salvation Army.

Also on **Sunday, December 14th at 2.30pm** at Junction Chapel, Garsdale and on **Wednesday, December 17th at 7.30pm** at Askrigg Church with guests East Witton Male Voice Choir.

East Witton Male Voice Choir - Christmas Concert on **Saturday, December 13th at 7.30pm** at Leyburn Methodist Hall.

Leyburn and District u3a

On **Friday, December 19th** members are invited to a social get-together with mince pies and coffee. If you are not already a member come along and find out how you can get involved in u3a.

Our 2026 programme starts on **Friday, January 16th** with a talk on Fraud – something that affects every one of us on a daily basis; scam emails, phone calls, text messages. You can find out how to spot a fraud and how best to protect yourself.

Andy Fox will explain how fraud works, how to spot a fraud and what you should do if you become a victim.

After retiring as a Police Inspector from Cleveland Police in 2013 Andy worked for four years in Trading Standards investigating rogue traders followed by a further six years in Economic Crime at North Yorkshire Police and the Regional Organised Crime Unit helping victims of fraud.

Visitors and new members are always welcome. Doors open at **10.00am** for **10.30am** at Leyburn Arts and Community Centre, Richmond Road, Leyburn DL8 5DL.

For details contact Membership secretary www.leyburn.u3asite.uk



PUB · DINING · HOTEL

Village Pub, Restaurant and Hotel
Located in Askrigg, in the heart of Wensleydale

12 Comfortable En-Suite Bedrooms

Double & Twin Rooms

Pub & Restaurant

Great Food and Drinks

Private Car Park

Beer Garden

Main Street | Askrigg | DL8 3HG
01969 650515 | info@middlehouseaskrigg.co.uk
www.middlehouseaskrigg.co.uk

News from the Central Dales Pharmacy, Hawes

Winter Opening Hours

Due to increasing financial pressures on the Community Pharmacy sector, and lower footfall through the winter months, a decision has been made to reduce our opening hours during this time.

As such, we will be CLOSING on Saturdays from Saturday, December 27th, through until the beginning of April.

We very much regret having to make this decision, and apologise for any inconvenience this may cause, however remaining open during these quieter months is not financially viable.

Festive Opening Hours.

We will be closed from 5.30pm on Christmas Eve and reopen on Monday, December 29th at 9.00am.

We will also be closed on Thursday, January 1st.



James Peacock SOLID FUEL MERCHANT Bainbridge

Good quality fuels at competitive prices.
Smokeless Fuel, Logs and Sticks all available.
Deliveries in Wensleydale, Swaledale and
Coverdale. No delivery too small.

James Peacock PRIVATE HIRE Bainbridge

4-8 seats, Airport runs, pubs, stations, walking
or cycling holiday, luggage transfers.....

Tel: 01969 650212 / 650465

Email: info@james-peacock.co.uk

Web: www.james-peacock.co.uk

COPY SHOP PRINTING ~ PAPER SCANNING & LAMINATING

Wensleydale Press

Burtersett Road, Hawes 01969 667575
wpress@tiscali.co.uk

The Little White Bus

To all our customers of 2025, Thank you for supporting us this year. We wish you peace and calm this Christmas season and hope for a bright year ahead, from all the staff at Little White Bus. We look forward to seeing you on our Service routes and Excursions in 2026. To get in touch with us, our contact details are bookings@udcp and 01969 667400.



UPPER DALES HOME CARE



Home care services are specifically designed to provide assistance with daily living activities in the comfort of an individual's home.



OUR SERVICES



Help at Home
includes:
Cleaning
Laundry
Light Chores
Meal Prep



Company &
Support:
Companionship
either in person
or by phone



Carers' Break
Sitting Services:
Support for those
caring for loved
ones



CONTACT US
01969 667400
or 07817 711227



VISIT OUR WEBSITE
www.udcp.co.uk

Cumbria Stove Centre

Supply and installation of wood,
coal and gas stoves.

- ♦ Flue and chimney lining services.
- ♦ Inglenook specialists.
- ♦ Fully qualified and experienced Hetas engineers

01539 821061 (day) - 01539 625227 (eve)
SHOWROOM: 34a, Main Street, Staveley

**DECEMBER/JANUARY WHATS ON
LISTING;**

please add these dates to your Diary

December

- 5 Dales Charity Bingo. 7.30pm. Askrigg Village Hall. See p.29.
- 5 Christmas Dominoes. Carperby Institute, 7.30pm.
- 5 LACC Fundraising Coffee Morning. 10.00am. Leyburn Methodist Hall.
- 6 Hawes Christmas Lights Switch On. See p.9.
- 6 Magic of Christmas Concert. St Margaret's, Hawes. 2.00pm. See p.40.
- 6 Concert. Reeth Memorial Hall. 7.30pm. See p.29.
- 7 Churches Together Toy Service, 10.30am. St. Margaret's Church, Hawes. See p.24.
- 7 Christmas 'Sing-a-long' with Askrigg Ladies. 2.30pm. Bainbridge Village Institute. See p.18.
- 7 Christmas Concertos and Carols, 4.00pm. Tennant's Garden Rooms. See p.14.
- 7 Bainbridge Village Xmas Lights switch on. 4.00pm. See p.11.
- 8 Farmers Network Meeting. See p.7
- 10 Dales Charity Bingo. 7.30pm. Hawes Market House. See p.29.
- 11 Westlife filmed 25th anniversary concert at LACC. See p.32.
- 11 Gayle Institute. Charity Coffee Morning. 10.00aam. See p.22.
- 13 Concert. East Witton Male Voice Choir. 7.30pm. Leyburn Methodist Hall. See p.18.
- 14 Christmas 'Sing-a-long' with Askrigg Ladies. 2.30pm. Junction Chapel, Garsdale. See p.6.
- 15 Christmas Whist Drive. 7.30pm. Gayle Institute.
- 15 Gurkha Band Concert. Tennants. 7.00pm. See p.23.
- 15 Askrigg Handbell Ringers. Askrigg Church. 7.00pm. See p.15.
- 17 Ladies Luncheon Club. Noon. Street Head Inn. See p.4.

- 17 Concert. Askrigg Ladies and East Witton Men. 7.30pm. Askrigg Church. See p.18.
- 19 u3a. Mince pies and coffee. 10.30 am. LACC. See p.18.
- 19 Olive's Café. Sycamore Hall. Christmas Winter Wonderland. 3.00pm. **See p.38.**
- 20 Domino Drive. 7.30pm. Thoraby Village Hall
- 21 Abba Forever Tribute Concert. Tennants. 7.00pm.
- 21 Hawes Silver Band Christmas Concert. Hawes Market Hall. 3.00pm. See p.12.
- 21 Local History Group Talk. 2.00pm. Harmby Village Hall. See p.23.
- 22 Leyburn Band concert at Tennants. 7.30pm.

January 2026

- 7 Hawes Christmas Lights dismantled. 8.30am. Town Foot. See p.9.
- 16 Dales Charity Bingo. 7.30pm. Bainbridge Village Hall. See p.29.
- 16 u3a. Talk on Fraud. 10.30 am. LACC. See p.18.
- 20 Swaledale Festival. Volunteer's Briefing. 2.30pm. Reeth Memorial Hall. See p.43.
- 21 Bellerby Study Group. Talk. 7.30pm. Bellerby Memorial Hall. See p.6.
- 21 Local History Group talk. 2.00pm. Harmby Village Hall. See p.23.
- 22 National Theatre 'Hamlet' at LACC. 7.00pm. See p.32.
- 27 Arts Society talk, 7.00pm. Tennants. See p.33.
- 28 Bellerby Study Group. Talk. 7.30pm. Bellerby Memorial Hall. See p.6.
- 28-31 Hawes Panto. Market Hall, See p.10.
- 31 Quiz night at LACC. See p.32.

**Dales Countryside
Museum News**

Opening times: Daily **10.00am to 4.00pm** in December. Closed Christmas Eve to Boxing Day, New Year's Day and January 6th to 31st. Open **10.00am to 5.00pm** February to October. Last entry one hour before closing. Contact: hawes@yorkshiredales.org.uk or call **01969 666210**.

Exhibitions:

Underground Worlds: from here to Vietnam! Caves from a major part of the limestone landscape of the world. Those in the Yorkshire Dales National Park are some of the finest and include the longest system in Britain: Three Counties. Vietnam's Phong Nha cave system is home to the world's biggest cave: Hang Son Doong. This exhibition explores the link and history between the two National Parks. Come along to see stunning photos of Yorkshire Dales and Vietnamese caves alongside archive material from Ingleborough cave, archive photos from the museum collection and equipment borrowed from cavers and caving clubs.

Yorkshire Dales Young Archaeologists' Club:

We had a fun October session exploring surveying and the Roman fort at Bainbridge including having a go at making a Roman snack! The club meets once a month on a Saturday morning, 10-12. Please call **01969 666210** or email dcm@yorkshiredales.org.uk if your child is interested in joining us for a trial session.

Young Creatives:

In October, our Young Creatives group met with Justine Boussard of Climate Museum UK. We had an interesting session looking at our collection through an eco-lens, thinking about the way objects connect, what the future could be and what everyone hoped it would be. Our next session is to be held at Nethergill with the Yorkshire Wildlife Trust, to learn more about peatlands and get creative with collagraph printing led by Charlotte Wilkinson. Supported by The National Lottery Heritage Fund and the Julia Rausing Trust with Art Fund, this UK-wide programme is engaging new and underrepresented audiences with museum collections across the country through the creation of collaborative touring exhibitions. If you're aged 18-30 and are interested in getting involved, just get in touch - we'd love to hear from you! We're also looking to meet with groups of young people so that their voices can be shared through the project. If you're in a group or lead a group and would be interested in having a chat, just get in touch.

Rural women research project:

We're uncovering some fascinating stories

through our research project into Rural Women and have been connecting with other museums and galleries. If you have any stories to share from within your family, village or local community, please get in touch at dcm@yorkshiredales.org.uk.

Learning:

Our object boxes have been out and about, inspiring children at schools across the area. We're looking forward to welcoming children from Hawes school in December. If your school is interested in a free led session or in using our loan boxes, just get in touch.

DCM events coming up in December:

Events are included in the Museum admission unless otherwise stated and bookings can be made online and via hawes@yorkshiredales.org.uk.

Hang Son Doong Cave virtual tour:

Thursday 4th, Tuesday 9th, Thursday 11th, Tuesday 16th and Thursday 18th December.

Sessions are from 10.30am – 11.30am and 2.00pm – 3.00pm.

In celebration of our exhibition showcasing our connections with Phong Nha Ke Bang National Park we are delighted to invite our museum visitors to experience the world's largest cave, Hang Son Doong with our virtual tour. The virtual tour lasts approximately 3 minutes. Included in museum admission.

Mother Christmas:

Saturday, December 6th, 10.30am - 3.30pm.

Come along to meet Mother Christmas, write and post your letter to Santa, have fun doing some Christmas crafting and enjoy a luxury hot chocolate at the Firebox café. Time slots available from **10.30am–3.30pm**.

Booking essential £8 per child. Once booked, please email hawes@yorkshiredales.org.uk with your child's age so they receive an age appropriate gift.

Accessible Mother Christmas:

Sunday, December 7th, 10.30am - 3.30pm.

Bespoke SEND event for your family to make memories with Mother Christmas.

Please email the museum to discuss your individual needs and to book your timed slot hawes@yorkshiredales.org.uk. Booking essential £8 per child.



Mystery Picture

The carving of the owl in last month's picture can be found near the quoits pitches at Carperby Pavilion. Where is this quiet lane?

MICHAEL MOORE and SON **BUILDER AND PLASTERER** **Family Business Est 1906**

Alterations, pointing, stonework,
Roof work, garden patios, paths,
plastering, insulated plaster
boarding,

Over-skimming Artex walls and
ceilings, tiling walls and floors,
underfloor heating, PVC sash
windows.

Tel: 01969 667045
Mob: 07968 684942

Hawes DL8 3NS

H & M

CRAFTSMEN

Ingleton | Est. 1987

KITCHENS · BEDROOMS · STUDIES

High Quality, Bespoke Furniture With
Full Design And Fitting Service



Showroom: Ingleton Industrial Estate, LA6 3NU
015242 41535 · kitchensandbedrooms.co.uk

Thank You Everyone

Thank you to everyone who recently attended our 'Music From The Movies 3' concert on October 25th in St. Margaret's Church Hawes. As always, Amy Cockett, Dave Clark and I really appreciate the loyal following that we seem to have acquired over the years and it really helps us to raise our performance levels and to provide what we hope will be a great evening's entertainment. On the night, with an audience of 170+, we managed to raise donations of £1,010 which is absolutely brilliant and will help to swell the coffers of the organ restoration fund.

My grateful thanks to our sponsors for the evening – The Roundthorn Country House Hotel, Penrith, and of course to the 'Maggies' Angels' team and Sarah Clark for their organisation and help on the day. We did have a number of teething technical problems during set-up on the day, but as always a massive thank you to Mike Hirst for pulling it all together and for all that he does with the audio and visuals to give our events such a professional feel. Huge thanks to Dave Clark for his performance contributions also.

And last but certainly very much not least, heartfelt thanks to my incredible 'musical partner in crime' Amy Cockett, without whom none of this would be possible, and who never ceases to amaze me and very gamely takes on board and delivers any weird and wonderful performance suggestions that I might throw at her.

Hope to see you at one of our next performances – 'Carols by Candlelight' – Hardraw Church on **Wednesday 3rd December at 7.00pm**; 'The Magic Of Christmas' – Hawes Church on **Saturday 6th December 2.00pm** and together with the Askrigg Handbell Ringers at Askrigg Church on **Monday 15th December at 7.00pm**, as part of the week's event for the Christmas Tree Festival.

Mal Carruthers

Gayle Institute

Coffee morning. **December 11th, 10.00am till noon** with a suggested donation of £5 per person for coffee and cake. All proceeds go to Sarcoma UK Cancer.

The Gurkha Band Concert

Monday, December 15th at 7.00pm at the
Garden Room, Tennants

Join us for another evening of incredible music at the Garden Rooms at Tennants. This popular annual event sees a lively performance from the Band of the Brigade of Gurkhas, featuring a unique selection of lively Western and Nepali music, rousing military tunes, and traditional Gurkha songs. This year, the Band will bring a Festive programme, delivered with their trademark blend of professionalism, enthusiasm, and sense of fun to get everyone into the Christmas spirit.

Proceeds from the concert will help The Gurkha Welfare Trust provide vital support to Gurkha veterans, their families, and communities in Nepal. With your support, the Trust enables people to live with dignity by delivering essential financial and medical aid, and works with local communities to provide access to clean water and education.

The Farm Lasses in Hawes

Dog Walking
Dog and Pet Drop-off
Home Pet Calls



Plus 'Bark 'n' Lark Dog Play Field

Middle Slippon, Hawes DL8 3QR

Get in touch www.thefarmlasses.com

07853 379607

AYSGARTH

FALLS

HOTEL



Now serving Afternoon Tea by advanced booking
Wednesday - Saturday 12pm - 4pm



Food served daily from 12pm

www.aysgarthfallshotel.com
01969 663775

Middleham and the Dales Local History Group

Wednesday, January 21st
Harmby Village Hall at 2.00pm

Thornborough Hall and its families by Marjorie Iveson

Our AGM will be followed by a short talk by Marjorie Iveson, a founder member of the Group, on the origins and history of Thornborough Hall and its families. At the end there will be an opportunity to consult copies of historic related documents.

We meet on the third Wednesday of the month. New members and visitors are always welcome, annual membership is £12 for nine meetings and visitors can attend for £3 per meeting. For more information contact **Tony Keates:** dotandtonyk@btinternet.com or phone 01969 640436.



A personal friendly service for 'all creatures great and small'

- Small animal consultations, diagnostics, and surgery
- Budget friendly preventative health care plans for dogs, cats, and horses
- Farm Animal routine work
- Ambulatory equine services
- In-house 24-hour emergency service for small animal, farm, and equine

01969 422201

www.wensleydale-vets.com
info@wensleydale-vets.com



Orthopaedic Massage

Back & neck pain, strains & sprains
Nerve injuries, sciatica, chronic pain
**Robust Covid-Secure
procedures in place**

Clinic in Hawes

07975 999373

Find me on Facebook www.reflex-om.com

International Caving Exhibition Opens In Hawes

Where in the world is most like the Yorkshire Dales National Park? The best answer is possibly Phong Nha-Ke Bang National Park in Vietnam, as illustrated in the latest special exhibition at the Dales Countryside Museum in Hawes.

“Underground worlds – caves of the Yorkshire Dales and Vietnam” showcases how both national parks have large tracts of limestone underfoot and boast some of the world’s largest and longest cave systems. The exhibition was officially opened this week and will run until January 4th. Featuring top class photography and video footage of cavers and caving systems in the Yorkshire Dales and Phong Nha-Ke Bang National Parks, the exhibition celebrates 35 years of exploration and exchange between British and Vietnamese cavers.

Chair of the Yorkshire Dales National Park Authority, Derek Twine, opened the exhibition and said “We might be 6000 miles apart, but we have been learning from each other. Phong Nha-Ke Bang is probably the best-preserved limestone cave system in the world. In the Yorkshire Dales, we’ve got the longest cave system in Britain.”

“An international caving community began in 1990 when Howard and Deb Limbert were given permission by the Vietnamese

government to lead parties of cavers in explorations. That led to the discovery of the expanse of the caves. “Full compliments to those who put this exhibition together. We are grateful to the film makers and photographers who have kindly presented their work for free at this exhibition.”

The partnership between the Yorkshire Dales National Park Authority and Phong Nha-Ke Bang National Park has developed from a cooperation agreement established in January 2024.

Mr. Dinh Huy Tri, Deputy Director of the Phong Nha-Ke Bang National Park Management Board said: “The exhibition is very impressive, very special, and not just for the caving, but how it presents the history, conservation values and the indigenous people of Phong Nha-Ke Bang National Park. We are hoping to build our first interpretation centre in the National Park, and the partnership with the Yorkshire Dales National Park Authority means we can learn much that will help us to progress our plans and ultimately secure funding.”

The Yorkshire Dales National Park has three show caves where people can get underground without crawling or expertise: Ingleborough Cave near Clapham,

Stump Cross Caverns near Greenhow and White Scar Cave near Ingleton. For the more adventurous, there are caving clubs including Bradford Pothole Club and Craven Pothole Club.

Myra Staveley 90th Birthday

Many thanks to you all for the many cards and best wishes received for my 90th Birthday. A special thanks to the hub for a lovely afternoon and to Stone House Hotel for a beautiful evening meal, completing a special day.

Myra

Bainbridge Vets Ltd

**A comprehensive, friendly veterinary
service treating animals large and small
24 hour emergency service.**

Open Surgery

Monday-Friday 9.00-9.30am and 2.00- 2.30pm
Saturday morning 9.00-9.30am
(appointments available at other times)

01969 650263

Churches Together Toy Service

This year the Churches Together in Upper Wensleydale Toy Service will be held on **Sunday, December 7th at 10.30am** at St. Margaret’s Church, Hawes. All toys donated will be taken by The Salvation Army for distribution.

A particular request has been made for suitable gifts for 8+ years including teenagers. All are welcome to attend this service. All donations of new toys will be gratefully received and help make the Christmas of children who might not otherwise receive a present.

Please leave the toys unwrapped so the distributors can choose the appropriate age and sex of the children who will receive them but you may wish to donate wrapping paper with the toys.

Bainbridge Womens Institute

We have come to the end of another busy year for our members. There hasn't been a dull moment and our diaries have been bulging with the opportunities we have had this year. In fact, we recently had a count-up and realised that we have had over 120 events and activities this year.

Before we wind down for the festive period, our walking group ventured to Coverdale, between showers, for a gentle walk, followed by refreshments at The Saddle Room. The lunch club ladies paid a visit to Hamiltons for an Afternoon Tea rather than a lunch (something to do with the fantastic cakes.). The garden group seem to be visiting places with cafes and tea rooms at the moment, rather than lovely gardens but perhaps that is due to the weather at this time of year.

We have held another Soup and Sweet Lunch in the Village Hall where members of our communities, and occasional visitors, can enjoy some delicious homemade offerings.. Hopefully, these will resume in 2026.

We had a really successful Christmas Craft Fayre at the beginning of November where Bainbridge Village Hall was filled with local craftspeople offering numerous gift ideas. Needless to say, there was also plenty of home-baking available to enjoy on the day, or take home for later. The event raised over £500, including a donation of £182 to Cancer Research from the sale of crafts.

Our last meeting of the year was the AGM where we followed the necessary business with a delicious meal provided by Olive's Cafe. Our President was re-elected and we welcomed some new members to our committee, whilst saying goodbye to others. Seemingly, we are a rarity in having so many keen committee members, not to mention, such a busy programme for our members,

We still have a few events to fit in before the Big Day as we will be holding our annual Christmas Coffee Morning at Sycamore Hall on **Saturday, December 6th from 10.30 am**. That afternoon, some of our members are also taking part in a wreath-making workshop - a busy day. Our groups also have things planned before we finish the year so we will be glad of the rest by Christmas. We still have our Christmas Party to look forward to which, this year, is going to take

place at The Middle House in Askrigg. We can then relax before launching our new programme in January. The first meeting of the year will be on **Thursday, January 15th** at Sycamore Hall, starting at **7.30 pm**. This will be a Members Meeting when we will entertain ourselves with an activity and/or a quiz. It will be a casual evening, so if you are thinking of joining us, do come along and meet us, and find out what we have planned for 2026.

If you are interested in joining our busy and friendly group you will be very welcome to come along to any of our monthly meetings and see what we get up to. There is no commitment to join on the day, so give us a try. You can get further details from our President, **Sue Stokes on 07816-955723**. We would be delighted to see you and offer a warm welcome and lots of opportunities. Do come along.

Upper Dales Health Watch

Synopsis of the minutes of the meeting held on November 11th.

- Meeting for Careers Spring 2026 is being planned for March, probably in West Burton Village Hall. Information to follow.
- Staffing – Katrina Metcalfe is the new Dispenser. Interviews for a part time Receptionist at Hawes are imminent. So far, the Practice has had no success in recruiting another GP / ANP. Locums are too expensive.
- 'Flu jabs are going well.
- The planned Nutrition course will be undertaken by 3 members of staff, and they should be able to give patients advice by the Spring 2026.
- AJM Healthcare is providing wheelchairs. Patients must be referred to Secondary Care to be assessed for one.
- The D&S had reported plans for the Friary Hospital in Richmond to house both the town's GP Practices. They had also reported the ongoing push for more civilian dentistry to be offered at the Catterick Integrated Care Centre (CICC).

Jane Ritchie, Hon. Secretary.

HANDY IN HAWES

HOME & GARDEN
REPAIRS & MAINTENANCE
FLAT PACK ASSEMBLY
NEW PROJECTS

DAMIAN : 07421 768511
handyinhawes@outlook.com

Wensleydale Railway and The Chips Express

In October, a national Blue Plaque was unveiled on the Stroud home of the late Rev. Wilbert Awdry, to mark 80 years since publication of the first of the famous Thomas the Tank Engine books.

After his father's death, Christopher Awdry took over the writing of the Thomas books - and developed many more stories about railway engines. Two of those engines were Jack and Lucy and the story of their exploits on the Wensleydale Railway is told in *The Chips Express*. This book was launched with a Meet-the-Author event in Askrigg Village Hall on May 25, 1996. This was followed by Christopher's second book about the Wensleydale Railway, *Heave-Ho Hamish* (published 2005).

The origins of the real-life story of Christopher Awdry's contact with the railway in Wensleydale lie in an invitation from Elizabeth Carter, Director of the 1993 Swaledale Festival, to the author to visit a number of primary schools in the dale, including Bainbridge primary school where David Jackson was then headmaster. The outcome of collaboration between established author and local children was a storyline and pictures on panels for exhibition in that year's Swaledale festival. Subsequently Christopher Awdry re-wrote the story, published in 1996 as *The Chips Express*.

If you - or a member of your family was at Bainbridge School in 1992-3, you may remember meeting Christopher Awdry - or even have a copy of one of these books tucked away with your childhood mementoes? Alternatively, perhaps you can find a copy in a second-hand charity bookshop. **Ruth Annison**

Nature helps lessen flood risks - let's harness its power together 

Take our quiz to test your knowledge 

Scan me 

or text
hello ousewem 13
to 07708 137 717

OUSEWEM

SEWAGE WATER TREATMENT PLANT, 10, WENSLEYDALE ROAD, BAINBRIDGE, NORTH YORKSHIRE YO21 2JH. TEL: 01937 540000. WWW.OUSEWEM.CO.UK

Craniosacral Therapist

Craniosacral Therapy and SCENAR (Self Controlling Energy-Neuro-Adapting Regulator) reflexotherapy now available in Hawes or at your home.

Finding your way to new health.

Call/text **07850 421925** for appointment/voucher

J. W. COCKETT and SON Family Butchers

Estd. 1854

Wholesale and Retail Bakers
Main Street, Hawes
Tel 01969 667251

Best Quality Meats
High Class Baking
Freezer Orders Supplied

Slimming
WORLD

touching hearts, changing lives

Leyburn
Methodist Hall

Every
Wednesday
9.00am, 4.30pm
and 6.00pm

No need to book Just come along and start your journey to a slimmer you.

Call Helen for more info **07969 559998**



Blueboxt - December Update

It can't be that time again? The festive period is upon us and our thoughts are already looking well ahead into 2026. To all our volunteers, participants, audiences and supporters thank you, we couldn't do it without you! We hope you join us again before the year is through - registration is open for all upcoming events and activities so please book early and support us to keep community arts happening in the Dales.

Events

Christmas Together Concert - Join Light My Choir!, Musical Director Colin Bailey, and special guests The Stanley Duo, Gail Barlow and Bee Darcey, for an afternoon of classic Christmas songs and festive cheer with a glass of mulled wine and a mince pie. The concert takes place at St. Matthew's Church, Leyburn on **Saturday, December 6th at 2.00pm (doors open 1.30pm)**. Tickets: Pay as you feel (suggested donation £10.00). The concert follows the Church's Christmas Coffee morning with local craft stalls. All Welcome.

A Christmas Cracker - The Garden Rooms at Tennants, Leyburn. BlueBoxt are thrilled to be joining the Service Children's Community Choir and friends for a heart-warming evening of festive music and community spirit. The concert takes place on **Wednesday, December 17th at 7.30pm**. Tickets are available from

The Iron Maiden

*Not enough hours in the day?
Fed up of never ending ironing?*

My ironing service is definitely a way of buying back much needed quality time in a busy life!

Tracy Hume

07527 796523 or 01969 666048.

Can arrange collection/delivery



JB TV AERIAL & SATELLITE SERVICES

John Banks
Proprietor

Telephone: 07891 944175
Email: johnbanksawes@gmail.com



www.tennantsgardenrooms.com or from the reception and cost £10.00 - Adults | £5.00 - Children.

Feast Christmas Party: Start the holidays with some festive fun for ages 4 to 12 on **Monday, December 22nd from 11.00am - 3.00pm** at Leyburn Methodist Church Hall. Enjoy an action packed few hours as a family or, let them have all the fun while you sneak in some last-minute preparations for the big day! There will be festive activities including Christmas cards and decorations to make and take home. A family friendly disco with traditional party games, challenges, and plenty of singing and dancing. All fuelled by healthy snacks, biscuit icing, and chance to prepare the party tea.

The session will finish with a visit from Mother Christmas for a special festive story time and a gift to take home. Places cost £20 inc. gift and party tea. FEAST voucher places are available from Schools or North Yorkshire Together - contact us to find out more.

To find out more or book places for our events and activities visit www.blueboxt.org or contact **Colin Bailey on: 01969 745810/ 07711 211169.**



Outdoor Clothing,
Footwear and Accessories

SALE SALE SALE SALE

Huge Discounts throughout

Up to
50% OFF RRP

Starts 1st Dec
While Stocks last

Riverside House
Town Foot
Hawes

Skogstad, Craghoppers, Berghaus, Silverpoint
AKU, Mountain King, Viking and many more

Heavens Above

We're treated to the best meteor display of the year this month, when the annual Geminids shower reaches its peak on the night of **December 13th/14th**. If it's a good year you're almost certain to spot over a 100 multi-coloured shooting stars an hour. You'll get the best view of what should be a really spectacular show before midnight when the Moon is still out of the way. On the night of **January 3rd/4th** next year we're due another major annual shower, the Quadrantids. Unfortunately this time round its badly affected by moonlight which will wash out all but the brightest meteors.

Right at the beginning of this month on **December 4th** we have the last of this year's three 'supermoons'. Lets hope it won't be clouded out like the one on **November 5th**. We're treated to three more in 2026 with the first one falling on **January 3rd**. Supermoons tend to be slightly over-hyped in the media but they're always worthwhile taking a look at especially just after they've risen and are still close to the horizon.

The solar system's biggest and smallest planets put on a great show during the next few months. Mighty Jupiter, the largest planet, dominates the southern sky right through the winter. You can't really miss it, shining brighter than any of the stars, in the constellation of Gemini the Heavenly Twins. It's at its brightest high in the south around **January 9th/10th** at

opposition when the Sun, Earth and Jupiter lie in a dead straight line and it's visible all night long. Venus and Mars are lost in the Sun's glare this month but Mercury, the smallest planet, puts on its best morning display of the year. Look for it during the first part of December very low down in the east just after its risen around **6.00am**. Not many people get to see this elusive little world so catch it if you can.

Nothing quite matches the view south on a cold, clear winter's night. Orion, the Mighty Hunter of the old Greek myths, and his retinue of bright constellations – Taurus the Bull, Auriga the Charioteer, Gemini, Canis Major and Minor (The Greater and Lesser Dogs) - are all well on view by the middle of the evening. See if you can spot the Red Giant star, Betelgeuse, marking Orion's left shoulder and his 'Sword', a vast cloud of interstellar gas and dust hanging below the middle star of the sloping line of three forming the Hunter's 'Belt'. A great binocular target. Sirius the Dog Star, trailing behind Orion, becomes really prominent in the weeks following the New Year. It's by far the brightest star in the sky, flashing like a diamond in the frosty air. To the east of Sirius you'll find the pale ribbon of the winter Milky Way. It winds its way right across the sky from Cygnus high in the north-west and then through Cassiopeia, Perseus, Auriga and Gemini down towards the south-eastern horizon. A wonderful sight from a dark rural location. Have a Happy Christmas and let's hope we have lots of clear skies in 2026.

Al Bireo

Steve Ward

Decorating and Woodwork

Mobile 07964 931461

Email ; - stevenwardwensleydale@gmail.com

D MOORE & M BLACKHURST
BUILDERS GENERAL MAINTENANCE

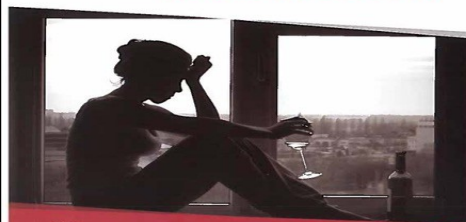


All types of building work undertaken
25 years' experience ~ Free Estimates

07772 284602 ~ 07975 897715

3 Woodburn, Hawes. 01969 667505

**IS ALCOHOL
COSTING YOU MORE
THAN MONEY?**



Alcoholics Anonymous

0800 917 7650

www.alcoholics-anonymous.org.uk

Email: help@aamail.org

SCAN HERE FOR
LOCAL MEETINGS



ALL ENQUIRIES ARE TREATED IN THE STRICTEST CONFIDENCE

Dales Charity



Friday 5th December 2025

In Aid of Salvation Army Xmas Appeal

Askrigg Village Hall

Wednesday 10th December 2025

In Aid of Burtersett Institute

Hawes Market Hall

Friday 16th January 2026

In Aid of Bainbridge Xmas Lights

Bainbridge Village Hall

Entry from 7.00 pm, for
Eyes down at 7.30pm

Reeth Memorial Hall

**Our last concert of the year,
Saturday, December 6th,**

The Wilderness Yet.

Vocals, fiddle, guitar and flute weave a tapestry of traditional and original songs and tunes; from a cappella three-part harmonies to luscious instrumental arrangements, to welcome the Christmas season.

All concerts **8.00pm** unless otherwise stated – doors **7.30pm**.

Tickets **£17**(£19 door) – half price under 16s.
Also available from Reeth PO or phone **Glen Steward 01748 884989** or visit www.reethmemorialhall.weebly.com.

Thank you to everyone who has been to one or more of our concerts during 2025. Your support helps us to raise much needed funds for the hall that are used for ongoing maintenance and improvements.

Wishing you all a Merry Christmas and a Happy New Year on behalf of the Memorial Hall committee.

Glen Steward

Bear Cottage Interiors

Curtains and Blinds,
Fabric and Interiors
Market Place Hawes

01969 666077

Email julie@bearcottageinteriors.co.uk
Website www.bearcottageinteriors.co.uk

**HAWES POST OFFICE
in the Community Office**

OPENING TIMES:

9.00am to 5.00pm Monday to Friday

9.00am to noon on Saturday

Phone number: 01969 667201

BAINBRIDGE POST OFFICE

Post Office open at Bainbridge
in Sycamore Hall 9.00am to 11.00am
Mondays and Wednesdays

ASKRIGG POST OFFICE

In Sykes House, Noon to 2.00pm
Mondays and Wednesdays



**Sycamore
Country Store**

Now Open Inside Sycamore Hall

OPENING HOURS:

MONDAY TO FRIDAY. 9.00 am to 1.00 pm

Selling a wide range of everyday essentials,
including dairy products, fruit & veg, bread,
cakes & savouries, sandwiches and sweets

**WENSLEYDALE TREE and
HORTICULTURAL SERVICES (Est. 1995)
DAVID ALLEN (HND Arboriculture)
CHARLIE ALLEN (BSc Arboriculture)**

Fully insured (£5million) professional tree work:
felling, crown thinning etc.

Petrol log splitter and woodchipper for hire.

Tree stump removal.

Hedge establishment and maintenance.

Supply/ planting of forest/ ornamental trees.

Fruit tree maintenance. Weed control services.

treeshawes@gmail.com

01969 667364 or 07811 576108



**WENSLEYDALE
SCHOOL**
LEYBURN

New Year 2026 'Shout outs'

The Guardian newspaper ran an article on November 13th, explaining that schools who are wholly inclusive have become victims of their own success, putting ever more strain on school budgets. As I reach my milestone 10th year as Headteacher and as someone who wholeheartedly believes in inclusive education provision, I can absolutely concur. We continue to be oversubscribed, have some of the highest school attendance figures locally AND nationally, with a 4 year upward trend of GCSE academic outcomes.

After putting social media post asking for donations of unwanted cooking aprons, I would like to thank those members of our community who have donated over 40 aprons for our school to use in cooking lessons. I am extremely grateful to all of you.

Therefore, I am unashamedly putting a few more 'shout outs' for items that will have a significant impact on the education provision in school without breaking budgets. As Christmas has passed and there may well be old and unwanted items in our homes, that still have 'life' in them please read our few 'shout outs' and if you can help - thank you and Happy New Year.

*Bookworms, Unite! Wensleydale School is calling on our wonderful community to help us expand our library collection! We're looking for good quality, clean copies of fiction and non-

fiction books suitable for 11-16 year olds.

Do you have any pre-loved adventures, captivating histories, intriguing science reads, or compelling stories gathering dust on your shelves? Please drop off your generous contributions at the Wensleydale School office during school hours. Thank you for helping us build a thriving library for our students.

*Attention Former Wensleydale School Students! Our Year 11s are gearing up for mocks in January and getting into serious revision mode! We're putting out a special appeal to our alumni: do you still have any old GCSE revision books gathering dust?

Not every student can afford new revision guides, and your pre-loved books could make a huge difference to our current students. If you have any books you no longer need, please drop us a message or simply bring them to Wensleydale School reception during school hours.

Thank you in advance for supporting our next generation of successful students.

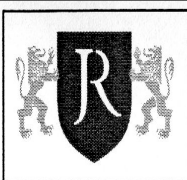
***Tech Upgrade? Donate Your Old Laptop!**

Did you get a shiny new laptop for Christmas? If so, your old working laptop could find a new, vital purpose at Wensleydale School!

We're appealing for donations of any unwanted laptops that are in good working order. These devices would be of huge benefit to our students, providing essential support for exam software, in-class learning, and homework.

Every laptop helps bridge the digital divide and ensures our students have the tools they need to succeed. If you have a working laptop you're willing to donate, please contact us via [email address/phone number] or drop it off securely at Wensleydale School reception during school hours.

Thank you for your incredible generosity and for empowering our students this New Year!



Robin Jessop

Free Market Appraisals

**For Selling & Letting Rural Property.
Specialists in Selling by Auction.**

Market Valuations for Tax Planning,
Lending, Compensation and Council Tax
purposes

Marwood House, Railway Street, Leyburn
Tel: 622800

Sykes House in Askrigg Grocery Shop and B&B Shop Open 7 days a week

Enquire for
B&B bookings at
www.sykeshouse.co.uk
01969 650535



Yorebridge Sport and Leisure Centre

The Wensleydale Centre, Askrigg,
Tel 01969 650060

The weather is AWFUL - I don't want to go to a gym! You don't have to! We have two classes a week which we live stream on Zoom - Fit 4 Life and Circuits. These are included in the Zoom Membership, Premier Plus Membership and Pay as you Go vouchers. The link is emailed out and there is even a recording made available after the class, so it can fit round your other commitments, and you don't even have to leave your house.

Gym membership - purchased through the ClubRight gym management system <https://www.yorebridgesportandleisure.co.uk/>. We have a variety of gym memberships including monthly, couples, student, and junior memberships, as well as pay as you go vouchers. These allow you to use the gym in a way that suits you and have a great workout to meet your needs. Our fully equipped gym and studio space is open 6am to 10pm, 7 days a week. A live Membership / Voucher, set up through ClubRight, is required to access the electronic door.

Class Timetable - via Zoom or live class as indicated. Booking is essential for all classes. Email admin@yorebridge-sport.co.uk or phone **01969 650060**. Classes are: (£9 pay as you go or class membership option available.)

Fit for Life - Mondays (live and on zoom) **9.15am - 10.15am**. Building and maintaining strength to live life your way. Weights, resistance bands and equipment available to borrow in the gym.

Warm and Well - Mondays (live) **11.00am - noon**. Enjoy a social, active class building core strength. Standing and chair-based exercise.

Adult Tennis Club - Mondays (live) **6.00pm - 7.00pm**. Social tennis, weather permitting. To join the group: yorebridgetennis@gmail.com.

High Intensity Bootcamp Tuesday and Thursday (live) **6.00am - 7.00am**. Get that morning metabolism boost.

Circuits - Wednesdays (live and on Zoom) **9.15am - 10.15am**. Exercises to keep active people, active. Work at your level through a mix of cardio and strengthening exercises. Weights, resistance bands and equipment available to borrow in the gym.

Yogafusion - (£6) Thursdays (live) **9.30am - 10.30am** with Janesse. To book please email yogafusionbyvj@gmail.com.

Strong and Able - Fridays (live) **11.00am - noon**. Maintain your ability to get out and enjoy life, build muscle tone, stability around movement and keep flexible and mobile around joints. Standing and chair-based exercise.

Over 40's Walking Football (£3) Fridays (live) **6.00pm - 7.00pm** with Glenn on the MUGA, yorebridgetennis@gmail.com.

We are on Facebook, 'Yorebridge Sport and Leisure', give us a follow to keep up to date with the news from the centre.

Fundraising - We have an Easyfundraising account for The Yorebridge Sports Development Association Ltd, it is simple to join, doesn't cost you a penny and will help us to keep delivering. Simply scan the QR code and follow the steps, thank you so much for all your support.



| | | |
|---|--|--|
| Digestive Disorders Indigestion Heartburn Infant Colic - Counselling Only Constipation Diarrhoea Haemorrhoids | Mouth Problems Oral Fungal Infections Mouth Ulcerations/Inflammation Teething Oral Thrush | Skin Allergy / Itch Hay Fever Acne Eczema Allergy/Itch Nappy Rash Scalp Disorders Bites and Stings |
| Eyes Hay Fever - Eye Symptoms Bacterial Conjunctivitis Dry Eyes (Children under 2 years need to visit their GP) | Ear Wax | Nasal/Cough Congestion Hay Fever Cough Cold Flu Sore Throat |
| In Pregnancy Heartburn Constipation Haemorrhoids Coughs and Cold Headache and Backache Hay Fever Head Lice | Pain & Inflammation | Children Pain Fever Earache Coughs, Colds & Snuffles |
| Infections Vaginal Thrush Fungal Skin Infections Cold Sores Warts or Verrucas Threadworm Head Lice Scabies Crab Lice Cystitis / Urinary Infections Athletes foot | | |

Free Advice & Treatment*

If you do not pay for your prescriptions, you can get a wide range of medication free without the need to visit your GP.

* For minor conditions only, ask pharmacy staff for details.



DENTURE PROBLEMS?



Denture Studio

Are you unhappy with the look or fit of your existing dentures?

WE CAN HELP

Our in-house Clinical Dental Technician Mark can provide quality bespoke dentures designed to your individual needs



To Book
FREE
Consultation **CALL**
01677 422968

Website: www.orcharddentallab.co.uk

Email: info@orcharddentallab.co.uk

1 The Villas, Bridge Street, Bedale, DL8 2AB



Home Run

Pet sitting, House sitting, Dog walking

I offer a friendly, personalised pet and house sitting service in Wensleydale and further afield.

Nicola – 07866 336924

nicola@homerundogsitting.co.uk

www.homerundogsitting.co.uk



- City and Guilds qualified
- Fully insured ● Certificates issued
- Prompt professional service
- NO MESS - NO FUSS!

Martin Tradewell

QUALIFIED CHIMNEY SWEEP

01969 640099

5, The Row, Horsehouse, Leyburn. DL8 4TT

Email: martin@daleschimneysweep.co.uk



Leyburn Arts and Community Centre

Leyburn Arts and Community Centre are slowing down ready for Christmas and the New Year break. Some groups and activities finish early but the ones who celebrate with Christmas festivities or nibbles, a party or lunch do not. These include our Tuesday Club and Lunch Club whose members look forward to something special.

We shall be **closing from Monday, December 20th and re-open on Friday, January 2nd**, refreshed and eager for 2026 to begin.

Before then we have a lots going on - the Community Shed members have been making items for the Christmas craft fairs; a Xmas Wreath workshop is planned; Exhibition on Screen is screening Caravaggio on **Thursday, December 4th**; we are hosting the regular Friday Coffee Morning at the Methodist Hall at **10.00am on December 5th**; the French Film Festival comes to a close on **Friday, December 12th**; we have an evening's entertainment with Paul Sowden on **Saturday 6th**.

Westlife come to Leyburn on **Thursday, December 11th** with a Cinema Live screening of the their 25th anniversary concert from the Royal Albert Hall; the Celebrating 100 years of Community Cinema finishes with the wonderful classic Singin' in the Rain on **Friday, December 5th** with a special £3 ticket, free refreshments and a free raffle!

Not forgetting as it wouldn't be Christmas without him, the wonderful Andre Rieu's Piece of Magic, his 2025 Merry Christmas concert is on **Sunday, December 7th**.

Once into January, amongst other events, we get all serious again with National Theatre Live: Hamlet on **Thursday January 22nd at 7.00pm** and on **Saturday January 31st** we look forward to hosting another of our very popular Quiz evenings - with delectable supper included!

Thank you to all who have supported us during the year and we look forward to seeing you again in 2025.

If you haven't yet been to the Centre or Community Shed, then give us a try, we are a friendly volunteer led charity supporting our local communities.

Best wishes from us all.

Arts Society Wensleydale

The wonderful world of Heath Robinson

The first lecture of 2026 for Arts Society Wensleydale is on the cartoons and contraptions of the English cartoonist, illustrator and artist, W. Heath Robinson.

Famous for drawing rickety, bizarrely complicated devices that carry out the simplest of tasks, Heath Robinson even has his own noun in the Oxford English Dictionary. Join us on **Tuesday, January 27th at 2.00pm** at Tennants Auction House, Leyburn, to find out more about 'the immortal contraptioneer', and discover his connection to code-breaking at Bletchley Park, and to Wallace and Gromit!

Non-members/guests are always welcome at our lectures. For more information on Wensleydale Arts Society, visit <https://theartssociety.org/wensleydale>.



TOM ADDISON
FINE FURNITURE

Fine quality furniture handcrafted in the heart of Wensleydale.

Free standing and fitted furniture designed & handmade to your requirements.

All enquiries welcome: 07585952951

tom@tafinefurniture.co.uk www.tafinefurniture.co.uk

Music Tuition for all ages with
www.colinbaileymusic.co.uk
07711 211169

**Drums & Percussion; Vocals;
Piano & Keyboards; Music Theory;
'Get Musical' Workshops.**

W.S.HARTLE FAMILY BUTCHER, WEST BURTON

Best Quality Meat, West Burton Lamb,
Homemade Sausages and Burgers,
Free Local Delivery and Freezer Orders
Tel: David on **01969 663302** or visit
www.hartlebutchers.co.uk

GS PAT TESTING

HOLIDAY LETS
LANDLORDS
SMALL BUSINESS
FULLY INSURED

☎ 07984214960

✉ gspattesting@gmail.com



EFFICIENT HEAT

OIL BOILERS SERVICED
AND REPAIRED

Contact Nick

07729 105466 / 01969 667847



M Fothergill

Building Services

All aspects of building work undertaken **667936 / 07966 624649**

Hawes DL8 3RP

Plastering Alterations Extensions
Roof work General Maintenance



Yorkshire Dales Accountancy
Chartered Accountants

taxation & business advisors

We provide a broad range of accountancy and taxation services to our clients. Please feel free to contact Martin or Hazel.

E-mail:

info@yorkshiredalesaccountancy.co.uk

Telephone: 01969 678128

Website:

www.yorkshiredalesaccountancy.co.uk

Sycamore Hall - A Place Not to be Missed

Every month, I write about what is going on at Sycamore Hall in Bainbridge, but it has dawned on me that there may well be some of you who do not actually know what I am talking about! If you are new to the area, or just passing through on your holidays, it is more than likely that you have never heard of the place, least of all visited, so I thought I would put you right.

A good number of years ago, Bainbridge benefited from a care home at High Hall (previously the old village workhouse). Opposite High Hall was a small development of sheltered accommodation called Sycamore Close.

Back in 2006 plans were submitted to demolish the sheltered housing to create space for a new facility which was fresh on the scene around the country. Once completed, this would take some of the residents from High Hall and that building would then be converted into homes for local people. After much discussion and negotiation, the plans were accepted and work started, in a partnership between Housing 21, North Yorkshire County Council and Richmondshire District Council. The new facilities at Sycamore Hall officially opened on September 27th 2007.

The idea of this new facility was to provide independent living opportunities for local people. The building provides 42 one or two bedroomed apartments, along with guest rooms, a launderette and communal facilities including two lounges, a cafe, treatment room, shop, hair salon and library. The intention was for this new facility to become firmly entrenched in the village with local residents able to utilise many of the services sited there.

In 2023/24, a significant refurbishment project took place which involved the replacement of all windows and doors, new ecofriendly lighting in all the communal areas along with new flooring, specially commissioned local photographs for the walls, refurbished guest rooms, lounges, cafe and creation of a dedicated TV lounge. This has turned the place into a very impressive, luxurious and comfortable place to spend time.

In the main, residents come from the local communities, although there is a qualifying criteria which means that every applicant for an apartment is assessed to ensure they meet those criteria. There is an office with North Yorkshire

Council staff who provide care services where needed (following individual assessments). Care staff are on-site 24 hours a day.

Each apartment has its own front door and letterbox which opens into a hallway from where it is possible to access a sitting/dining room, kitchen, one or two bedrooms and a wet room. All have lovely views of the gardens and surrounding countryside.

Residents are responsible for flooring, curtains and furniture in their apartment and can decorate it to their own taste. Each resident pays rent for their apartment along with a service charge which covers the cost of maintenance of the communal areas etc.

In respect of the other facilities, these add a whole new dimension to this community, offering residents the opportunity to be independent and to interact with local residents. The library, shop, hair salon and cafe are all open to the public. The Post Office visits twice a week, the guest rooms are available for overnight stays (primarily for family/friends of residents) and many of the events and other activities are available to members of the local community as well as residents. Indeed, we welcome everyone to come along and join us. (See our 'News From' article for details of regular and 'ad hoc' events, and opening times of the businesses). We have secured funding to develop our new TV Lounge as a Community Cinema and we have spaces that can be hired for events etc.

There is also a Respite Flat where members of our local community can book for respite care whilst their main carer has a break. We are also really fortunate to have a 'Step Up, Step Down' flat which is maintained by a local charity. This allows members of our local communities to have a maximum stay of up to six weeks following a stay in hospital, enabling them to rehabilitate before returning home.

In short, the aim is to make Sycamore Hall the place to live and enjoy later life. It is a very long way from being a care home and has a really welcoming, friendly and family feel to it. You really should come to visit us! You have no idea what you are missing and just how wonderful life could be here! This is a fabulous facility and we are really lucky to have it in Bainbridge. For all enquiries, please contact the Manager, Nicky Cooper, on **0370-192-4055**.

K.P.

Wensleydale Concert Series

September saw the end of our 10th anniversary concert series. It was a successful series with lots of positive feedback from audience members who came from as far afield as Berlin, Manchester to Scarborough and the south coast to Northumberland as well as lots of regulars who live locally.

During the series we hosted 18 musicians from all over the UK and from Berlin and Salzburg. We would like to say a huge thank you to everyone involved: the musicians and audiences but also a big thanks to volunteers who helped at the church, with parking, distributing posters and leaflets and especially to the individuals who generously sponsored concerts and to the many who gave smaller donations. Without your involvement the concert series could not happen.

Our 2026 season of six concerts is already planned for next May to September and tickets are on sale now in time for Christmas presents! Tickets are £18 if bought in advance (£20 at the

door) or £1 for under 18s and full-time students. We also have a generously discounted season ticket for £72 (that is the equivalent of six concerts for the price of four). For full details see www.wensleydaleconcertseries.co.uk now.

Our 2026 concerts sees a return of some old friends and supporters of our series: our very versatile friend and pianist Daniel Grimwood in a new collaboration with clarinettist Emily Worthington, also the effervescent pianist Yasmin Rowe is returning from Melbourne, Australia to give a piano recital.

Other past performers returning with new partners are pianist/composer Huw Watkins with the astonishing virtuoso horn player Ben Goldcheider and Richmond based early music specialist viol player Susanna Pell with her lutenist husband Jacob Heringman (as Pelingmans' Saraband). We also welcome the virtuoso pianist Tyler Hay for his debut in Wensleydale performing the monumental Grande Sonate by Franz Liszt.

Finally we are welcoming a young and extremely talented cellist Inez Karlsson with her pianist partner Ayaka Shigeno. Inez and Ayaka will be performing some beautiful and popular works but also are including the world premieres of two works, one written especially for this concert by composer David Blake and the other work by a composer featured a number of times in our series, Cheryl Frances Hoad.

Best wishes for a Happy Christmas and a hopefully less troubled New Year. We hope to see you in May.

Carol Haynes 07891 371280



Mike Addison Optician
Market Street, Kirkby Stephen,
017683 71555
Email : infoks@mikeaddisonoptician.com

- Providing eye care for all the family
- Private & NHS patients welcome
- Children & over 60's receive free eye examinations
- Supplier of all spectacle & vision related products

or The Shire Hall, Appleby, 017683 53199

Mike Addison FRCO CL OPTICIAN

PENNINE PRINT □□□□

Full Colour Print
Invites - Tickets
Brochures - Leaflets
Menus
all at affordable Prices

simon@pennineprint.co.uk
Tel: 07860 620 411

Unwell?
Choose the right service:

NHS

| | | |
|--|---|--|
|  <p>SELF-CARE stock up your medicine cabinet to treat minor issues at home</p> |  <p>PHARMACY for treatment and advice on minor illnesses</p> |  <p>GP SURGERY your first contact for ongoing health concerns</p> |
|  <p>NHS 111 Visit 111.nhs.uk or call 111 if you don't know what to do or where to go</p> |  <p>UTC/MIU Visit Urgent Treatment centres / Minor injuries units for urgent, but not life threatening issues</p> |  <p>A&E OR 999 for serious or life-threatening emergencies like chest pain or breathing difficulties</p> |



The countdown is on as we excitedly await Father Christmas' arrival. We have lots of fun Christmas themed activities and play planned for the weeks ahead. We have Christmas dinner for all the children and staff booked in the diary and a special guest visiting us before we break for the festive holiday. We are taking bookings now for the new year. If you would like your child (three months up to 12 years) to join us for funded sessions, paid sessions, wrap around care or just holiday care get in touch to reserve your place. To see if you qualify for the government funding please visit www.childcarechoices.gov.uk. You are welcome to come and have a look around the setting and meet the team, please contact us at dalesplay1@btconnect.com or call Joanne or Louise on 01969 667789.

This month we have had a bake sale and dressed in yellow to raise money for Children in Need, a charity very close to our hearts at Dalesplay. We had a walk to the Cenotaph to see the wreaths, the names on the monument and we made our own poppies to remember all those who lost their lives in the wars.



The children celebrated nursery rhyme week by sharing some of their favourite rhymes. We took part in road safety week. The children practised crossing roads safely, spotting dangers and took turns to dress up as the lolly pop person whilst we played on the ride-on toys to control the traffic and help peers cross safely. The Ducklings children have enjoyed lots of sensory play as they develop their gross motor skills. They have been practicing walking using the walking aids, singing lots of action rhymes and enjoyed playing in the home corner with the pots, pans and food. Take a look on our Facebook page, Dalesplay, to see some of the fun activities we have enjoyed.

We would like to say a very big thank you to Sharon Guy for organising our Christmas fayre and to everyone who came out on the day or sent in raffle prizes. Also, a very big thank you to Hawes Hares and Hounds walking group who

continue to plan fantastic walks for people in the community to enjoy. They have collected donations to put towards our refurbishment which is planned over the Christmas period.

Dalesplay is a charity providing care and education for children three months up to 12 years. We are here to provide a high standard service for families in the dales. No profit is made and we are run by a group of voluntary directors. If you would like to join the directors please do get in touch, we value your expertise. We are very grateful to Ann Rigby who retires at Christmas as a director after 13 years. She has been a huge help in delivering a high standard of service.

www.cozyholidaycottages.co.uk

Cozy Holiday Cottages - YORKSHIRE DALES

Since 2019, we have been welcoming guests to our beautiful dog friendly holiday cottages in the Yorkshire Dales.

Book your next Yorkshire Dales break with us!

- ♥ Gorgeous cottages
- ♥ Cozy log burners
- ♥ Large enclosed gardens
- ♥ Very dog friendly
- ♥ Hot Tub
- ♥ Remote & village locations



Do you own a holiday home in the Yorkshire Dales?
Cozy Holiday Cottages offers a superb bespoke management service - why not let us manage it for you?

07917 462300
info@cozyholidaycottages.co.uk
www.cozyholidaycottages.co.uk

Celebrate
New Year's Eve
at Yorebridge House



Exclusive 7-course Tasting Menu £115pp
Live Music from 9pm - All Welcome!

enquiries@yorebridgehouse.co.uk
Yorebridge House, Bainbridge, DL8 3EE



Visit our website

The George at Thoraby

It is always a pleasure to announce the re-opening of a local pub. Like all pubs, the George at Thoraby had to close its doors in March 2020 when the Covid epidemic emerged. It did re-open again after several months but it was clear that the owners were very half-hearted and no-one was surprised when the last pint was served in February 2022. When the property was put up for sale the worst was feared. Pubs are closing nationally at a rate of a dozen or so every week and it seemed unlikely that a buyer would come forward. Rumours of sales circulated wildly but few of the locals were optimistic that the pub would ever open again. Many thought that the owners would just wait until an opportunity arose to convert the building into a residential dwelling.

With this in mind, a village group was formed to consider future options. As a first step, the pub was registered with the council as a 'Last Inn' in the village. This meant it was a community asset, which would make it more difficult to achieve a change of use for the building. Consideration was then given to whether it would be possible to establish it as a community pub but everyone knew that this required an enormous effort, not just to set it up but to run it as well.

In 2024 the owners left, quite suddenly, and the pub was empty for several months. So what now? we all thought, as 2024 became 2025. Then, in February of this year, new owners moved in. They are Paul and Dan (short for Danielle) along with two lads in their twenties, Alfie and Louis. They are from West Yorkshire and this is their first venture into running a pub. They made it clear that there was a lot to do in the pub before it would be ready to open. Paul did nearly all the work himself, helped by the boys until they got jobs of their own, working for Bikers. There were hopes of the pub opening in summer, when the weather was so fine, but it was not ready until September 20th.

On the opening day it poured with rain but that didn't stop forty or fifty people turning up for a drink, or two, or three...or more. A whole barrel of Theakstons (72 pints) was drunk dry and the atmosphere was buzzing. Fortunately, Paul had ordered an extra barrel. For most of the day from 12noon to 11.00pm the local people showed their support and were delighted to see the pub open again. Paul and Dan were quite surprised but very pleased, if somewhat shattered.

Since then, trade has settled down a bit but is still doing well. The opening times from **12 noon to 11.00pm, every day except Monday**, are a big plus factor. Being able to roll up at any time makes it very convenient for locals and visitors alike. At present no food is being served but every Tuesday the travelling fish and chip van calls at the pub (**about 7.30pm**) and we are welcomed to take the food inside and hopefully buy a drink. Also on a Friday night at the end of each month a pizza van calls.

There is the possibility that next year some food may be provided but it is likely to be fairly limited in scope. The two letting rooms may also provide accommodation for visitors. Paul and Dan are keen to establish the pub side of the business before trying to be too ambitious and that makes a lot of sense.

Everyone says how welcoming the whole family is and how lucky we are to have such friendly people in the pub. A cheery greeting and a smile make so much difference. Although they don't have any of their own, dogs are equally welcome and quite often there are one or two tucked quietly away in corners or under tables. Drinkers are well supplied: Theakstons Best and XB are most popular but there is also a session IPA beer and Guinness, lager and cider on tap. You will often overhear "By, that's a good pint!" and it really is good. Paul certainly knows how to keep his beer.

So far the re-opening has been a huge success. Long days for Paul and Dan but for the rest of us, not just a place to go for a drink, but a focal point for socialising, which the village has been missing for several years. If you want a traditional Dales pub with a good atmosphere, come along and enjoy it. It is up to us to support them and we wish them every success.

N.P.

Royal British Legion Poppy Appeal-2025

On behalf of the RBL, I would like to thank all those from the Askrigg, Bainbridge and Hawes communities for their help and donations towards raising £3,273 during the Poppy Appeal. Without these donations the RBL couldn't help support the Armed forces Communities.

Many thanks. **Andy Johnson, Royal British Legion Poppy Appeal Organiser.**

Thoralby and District WI October Report

On **October 21st** Caroline Whalley gave us an informative and entertaining talk about making pottery. She was an established and successful chef for about 30 years but decided that she wanted to work with clay as she had always been interested in pottery. She has been making pottery for two years now and although she considers that she is still learning, she was very knowledgeable and demonstrated how to make Christmas tree and little house lanterns that tea lights would sit inside and three different sized bowls. Her examples of the bowls and plates that she had thrown on the wheel and glazed were lovely so it's no wonder that she has had many orders for her creative work. Everyone enjoyed her talk and she gave us a pottery rosemary leaf to strip off rosemary leaves as a gift which was appreciated by all the WI members.

There was an excellent trip to Marrick Priory earlier in October and there was a busy time in November with a Soup and Sweet to raise money for the Yorkshire Air Ambulance, a cooking demonstration by Tristan Prudden and a lunch at the Wheatsheaf.

The Christmas Meal at the Street Head Inn will be held in December. This will be the last report for this year so Merry Christmas for everyone at Thoralby and District WI and all the best for 2026.



Swan Farm, Redmire,
Leyburn DL8 4HA
01969 625647
castletimberbuildings@mail.com
castletimberbuildings.com

All of our products are hand made to order, from the smallest of sheds to the more elaborate designed summer houses. Our team of experienced joiners and specialists are on hand to advise and guide you, to help get the most of your product.

We aim to deliver the highest quality buildings, tailor-made to your requirements using only the finest quality timber and ethically sourced. You can be reassured that we also care for the environment.



CHAPEL GALLERY

Work from local artists and crafters. Bespoke Workshops available. Coffee and cakes. Dogs and children welcome.

Open daily (except Sundays)
11am to 4pm

Burtersett Road, Hawes, DL8 3NP

Tel: 07474 138536

info@chapelgalleryhawes.com

www.chapelgalleryhawes.com

THE HEALING COLLECTIVE

Encouraging health and well being
with a range of therapies.

Therapies for animals also available.

Coach House, Berry's Farm Shop & Café,
Swinithwaite, DL8 4UH. t.0845 474 2383

info@healingcollective.co.uk
www.healingcollective.co.uk



News from Sycamore Hall

Well, we can avoid it no longer- Christmas is coming! The decorations have been going up and our businesses are stocked with festive goodies and gifts.

By the time you read this, we will have enjoyed a visit to the Winter Wonderland at Tennants Garden Rooms where we plan to browse all the wonderful gift ideas and do a bit of shopping. Needless to say, we will also partake of some lunch!

We had a fascinating talk by Susan Basnett on manners, etiquette and traditions around the World. It was really interesting to hear about the different habits and expectations of eating, gifting, dressing etc in different countries. It is clearly a bit of a minefield to get it right and avoid offending anyone!

Olive's Cafe continues to be the place to meet and enjoy good food. Everything is delicious and the surroundings warm and welcoming. The Cafe is now decorated with some very impressive festive reindeer in advance of the grotto arriving!

Emily is hosting a 'Winter Wonderland' on **Friday 19th December** between **3.00pm and 6.00pm** when Santa and his reindeer will be making a brief stopover before his big day the following week. Do come along and see him and enjoy the amazing Grotto and feed the reindeer. Booking is essential (call Emily at Olive's Cafe on 629826). Tickets cost £10 per child and include a gift from Santa. Of course, there will also be lots of festive refreshments available in the Cafe. Sycamore Country Store and Maisy's Little Gift Shop will be open for you to check out their Christmas stock. Do come along and enjoy the festive atmosphere.

Lianna, our Beauty Therapist, is visiting us every five weeks or so to keep us all looking beautiful and provide some lovely pampering treats. This service is available to everyone in the area (men and women), not just our residents and staff, so do get in touch with Lianna if you fancy a bit of pampering - or if you would like to buy a voucher for a Christmas gift. The last visit before Christmas is on **Monday, December 22nd** and the next will be on **Monday January 26th**. Call **Lianna on 07792-086189** to make an appointment or discuss a gift voucher.

Meanwhile, our regular activities continue as follows:-

Mondays at 2.00 pm - 'Knit and Natter'

Tuesdays at 10.30 am - Bingo or Quiz

Thursdays at 10.30 am - Coffee Morning

Fridays at 11.00 am - Gentle Seated Exercise with Janet Seymour Every Weekday at 2.00 pm - Dominoes

Monthly services take place with Revd Dave Clark and the local Methodist Preachers. Please check for dates each month.

You are very welcome to join us for any of these activities. We love to meet new faces as well as familiar ones and can offer a warm welcome.

Our independent businesses are open, as usual. Sycamore Country Store is open Monday to Friday, 9.00 am to 1.00 pm for your everyday shopping needs with regular deliveries of fresh milk, eggs, bread, pasties, pies and cakes. Come and visit us to see our range.

Sonja's Hair Salon is open Thursdays and Fridays 9.30 am to 2.00 pm and Saturdays 9.30 am to 1.00 pm. If you wish to make an appointment please try to do so at least one week in advance to ensure you can get booked in. Maisy's Little Gift Shop will be open the same hours. Call in to see the range of toiletries, make-up, jewellery, candles, scarves, cushions and other gifts available. There is an extensive range of greetings cards, including some with local scenes.

Olive's Cafe is open to all from 8.30 am to 4.00 pm daily for breakfast, lunch and tea as well as takeaway. Fish and chips are available as a takeaway on Fridays. If you want to go along for the delicious Sunday lunches, it is best to make a booking as it gets very busy. Contact **Emily on 629826**.

The Post Office is with us on Mondays and Wednesdays between 9.00 am and 11.00 am for your posting and banking needs, and the library is open every day from 8.30 am to 7.00 pm.

Come and pay us a visit - you don't know what you are missing!

If you have any queries or would like to discuss the availability of apartments, please contact the **Manager, Nicky Cooper, on 0370-192-4055**.



**WENSLEYDALE
SCHOOL**
LEYBURN

Wensleydale School launches Reading Weeks

Leyburn – November 25th 2025. Wensleydale School is launching Reading Weeks this term - a new initiative to help every student discover the joy of reading. This coincides with the government announcing that 2026 will be the National Year of Reading, encouraging schools and communities across the UK to make reading for pleasure a priority.

Headteacher Julia Polley is clear about why it matters: "Reading is EVERYTHING! Research shows that students who read regularly don't just do better academically, they develop stronger thinking skills, greater empathy and even better long-term health."

How it works.

Students in Years 7–10 already spend time reading every Monday with their Academic Mentors (formerly tutors) as part of the school's enrichment programme. These are relaxed, no-pressure sessions where students can read whatever they like and chat about what they're enjoying. Many mentors have worked with the same students for two years now, so they know them well.

For students who find reading tricky, mentors often suggest magazines, short texts or books linked to their hobbies and interests - anything that gets them reading and keeps them engaged.

Reading Weeks will build on this. Once every half term, students will read for an hour each day, join in with some fun activities and take part in friendly form competitions. The first Reading Week starts on 24 November.

Deputy Headteacher Charles Barnett, who's leading the project, said, "We asked students what would make reading more enjoyable for them, and their ideas have really helped shape what we're doing. The aim is simple - help every child find something they actually want to read."

Everyone's involved.

The school would like say a massive thank you to Leyburn Co-op, which has donated over £2,000 to buy books for the school library. It's made a huge difference and comes at exactly the right time.

Teachers are getting involved too. Every

classroom will soon have a small shelf of each teacher's favourite books, showing students that reading isn't just for English lessons, it's for everyone.

Why It Matters.

Reading helps in every subject, but it does much more than that. It builds confidence, strengthens thinking skills and helps young people understand the world around them. This term's assemblies have explored how reading improves wellbeing, concentration, emotional intelligence and thinking skills. Across the school, homework focuses on building vocabulary and understanding key words in each subject to help students master the language they need to succeed.

Reading Weeks also connect directly to one of the school's core principles: that language unlocks the world. When students read widely and build their vocabulary, they're better able to understand their world and find their place in it.

With a national focus on reading coming in 2026, Wensleydale School is proud to be leading the way - putting books at the heart of school life and helping every student find stories and ideas they care about.

The school is welcoming donations of books in good condition to help grow the library collection. If you'd like to donate, please contact admin@wensleydaleschool.net.

**THE
MAGIC
OF CHRISTMAS**

Saturday Dec 6th

2-5:30pm

A start to the Festive Season

Mal Carruthers & Amy Cockett

Organ With Vocals

Festive Refreshments Festive Refreshments

St Margaret's Church: Hawes

**Followed by Carols with
Hawes Silver Band and a visit from
Santa in the Market Square!**

**Free Admission: Donations to the
Salvation Army Xmas Appeal**

FOR SALE

CHRISTMAS TREES

All varieties and sizes of trees at the very best prices at our plantation near Askrigg.

Also this year Christmas wreathes available from December 1st

Please contact **01969 650597**
mobile 07979 861438

SANDERSON & CO.

"Decorating Supplies"

**DULUX COLOUR
ADVICE CENTRE**

Scanner Colour
Matching & Paint Mixing



Stockist of Leading Brands including,
**Dulux, Crown, Leyland,
Ronseal, Cuprinol**

Extensive Wallpaper Pattern Library
Trade & Quantity Discounts Available

High Street, Leyburn DL8 5AQ
01969 623143

Email: sandersonandcoleyburn@gmail.com

Also CALOR & Camping Gaz stockist

Mobile heaters and accessories

Free local delivery



EDGLEY GARAGE



Edgley Garage, Aysgarth,
Leyburn, North Yorkshire,
DL8 3AD

07939 881858

edgleygarage@yahoo.com

MOT testing; Full servicing;
Air conditioning service;
Brakes, clutches and all
general repairs to vehicles.

Hawes School News

Victorian Day.

Class 3 have enjoyed taking part in Victorian Day, where the children dressed in Victorian costumes for the day. The children had to abide by Victorian School rules, including a hand and shoe inspection. Lessons included handwriting, chanting spellings and times tables, history and reading. It was a great day and the children enjoyed themselves even though the majority of the day was sat in silence!

Michael Rosen day.

We celebrated Michael Rosen Day in school at the start of November. The Reception to Year 6 joined a live webinar all about his work. Michael called it a "Poetry Party". The children really enjoyed the webinar. The nursery children also joined in and retold the story of "We're going on a bear hunt". We had a super day listening to and writing our own poetry using the work of Michael Rosen as inspiration.

Remembrance Day.

On Remembrance Sunday, some of the pupils from school supported the Remembrance Day Service in Hawes. The pupils joined the church service and the parade up to the war memorial outside school, where they laid a wreath. On November 11th the whole school held a two minutes silence and Class 1 visited the war memorial to lay their wreath and hold their silence.

Cluster Sports Events.

We have been joining in with Cluster Sports Events this term. Our Class 3 children went to the Wensleydale School to participate in a hockey tournament. The children were split into two teams (Hawes A and B) and played really well. The last match of the morning was a Hawes Derby, which was fast and furious! The children had a great morning and Hawes B team came 2nd overall. Well done to all.

School contact details: Phone **01969 667308**
hawes@ycatschools.co.uk.

Wishing Judith Metcalfe

a Happy 70th birthday on
December 23rd.

Love from all of us XXX

Index to Advertisers

| | Page | | Page |
|---|------|---|------|
| Accountancy, Yorkshire Dales | 33 | Logs, Springbank Logs, Hawes | 17 |
| Advertising Rates and Contacts | 44 | Logs, Seasoned Hardwood | 7 |
| Alcoholics Anonymous | 28 | | |
| Aysgarth Falls Hotel | 23 | Massage, Mobile Therapist | 15 |
| | | Middle House, Askrigg | 18 |
| Bear Cottage Interiors | 29 | Music Tuition, Colin Bailey | 33 |
| Boiler Service – Efficient Heat | 33 | | |
| Boiler and Aga Service, M.F.W. | 17 | Optician - Mike Addison | 35 |
| Builder and Plasterer, M. Moore and Son | 22 | Orthopaedic Massage, Reflex | 23 |
| Builder, Dinsdale John and Ted | 17 | Ousewem, Flood Resilience | 26 |
| Builders, Moore and Blackhurst | 28 | | |
| Building Contractor, Andrew Hawkins | 6 | Pet and House Sitting, Home Run | 32 |
| Building Services, Fothergill M | 33 | Plumbing and Heating, Parfitt J | 17 |
| Butchers, Cockett, Hawes | 26 | Plumbing & Heating, Upper Wenslydale | 11 |
| Butchers, Hartle, West Burton | 33 | PAT Testing | 33 |
| | | Post Office, | |
| Chapel Gallery | 38 | Hawes, Bainbridge and Askrigg | 29 |
| Chimney Sweep, Dales Sweep | 32 | Print Services, Pennine Print | 35 |
| Christmas Trees for sale, Askrigg | 41 | Print Services, Wensleydale Press | 19 |
| Coach Travel and Holidays – Bibby's | 13 | | |
| Coal Merchant, Peacock | 19 | Records & Music Memorabilia | 15 |
| Cozy Holiday Cottages | 36 | | |
| Craniosacral Therapist | 26 | Scrap Car and Commercials Collection | 13 |
| Cumbria Stove Centre | 19 | Sewing Needs; Kearton | 14 |
| | | Solicitors, Scotts, Hall and Birtles | 9 |
| Dales Garage | 12 | Solicitors, McGarry | 11 |
| Decorating Supplies. Sanderson & Co | 41 | Slimming World | 26 |
| Dental Lab, Orchard | 32 | Sycamore Country Store | 29 |
| Dog Walking and Play Field - Hawes | 23 | Sykes House, Askrigg | 30 |
| | | | |
| Edgley Garage, Aysgarth | 41 | Tailoring - Applegarth Couture | 13 |
| Electricians - Teasdale | 11 | Taxi, Peacock, Bainbridge | 19 |
| Estate Agent, Jessop Robin | 30 | Tea Room, Hamilton's, Aysgarth | 8 |
| | | Three Peaks Sale | 27 |
| Financial Advisor, Kathy Fawcett | 18 | Timber Buildings, Castle | 38 |
| Financial Services, Walter Dawson & Son | 14 | Travel Specialists – Sturdy Travel | 11 |
| Fish Market, Hawes | 14 | TV Aerial & Satellite Services. J.Banks | 27 |
| Flooring - NH | 15 | | |
| Fuel Available, Dale Head Garage | 13 | Vets Bainbridge | 24 |
| Funeral Directors, Sanderson and Co. | 4 | Vets, Wensleydale | 23 |
| Furniture, Handcrafted, Tom Addison | 33 | | |
| | | Wensleydale Creamery, Hawes | 16 |
| H&M Craftsmen, Ingleton | 22 | Wensleydale Tree Services, D. Allen | 29 |
| Hairdressing, Edie Peacock | 44 | Withywood Stores, West Witton | 15 |
| Handy in Hawes | 26 | Woodcraft Studio & Timber Services | 7 |
| Healing Collective, Swinithwaite | 38 | Woodwork and Decorating. S. Peacock | 17 |
| Hearing Tests and Aids | 12 | Woodwork and Decorating. Steve Ward | 28 |
| Home care, Upper Dales | 19 | | |
| | | Yorebridge House | 36 |
| Ironing Service–Tracy Hume | 27 | Yorkshire Foot Clinic | 11 |
| | | | |
| Joiner, Solid Joinery Solutions | 9 | | |

Swaledale Festival Returns in 2026 from Saturday, May 23rd to Saturday, June 6th.

Across 15 vibrant days, a record 75 events will light up stages throughout the spectacular northern Yorkshire Dales. Expect epic evenings out, all-age family events, high vibe happenings, creative workshops, and of course - plenty of adventures and discoveries out and about!

The full programme launches online on **January 12th**, ready for you to explore.

Coming your way:-One of the most exciting names in British folk; A major celebration marking a leading composer's milestone birthday; A powerful, uplifting fusion of Afro-Latin rhythms; A star piano recital featuring Chopin, Bach, and Beethoven; An all-age concert uniting audiences of all generations through iconic, much-loved music; A multi-award-winning solo artist praised as "both a custodian of tradition and a restless innovator"; Local artists woven into the programme in fresh and surprising ways.

Become a Festival Friend and enjoy a two-week priority booking period beginning **Monday, February 2nd**, along with an invitation to an exclusive Friends' Reception during the Festival - and, of course, the warm glow of helping to make something truly special happen here in the Dales. To take out or renew your membership, visit www.swalefest.org or call our office on **01748 880018** with any enquiries.

Booking is open earlier than usual to help you plan your Festival experience: Public booking opens **Monday, February 16th** and Friends priority booking opens **Monday, February 2nd**. Book your tickets online: www.swalefest.org.

Calling our Volunteers. Could you volunteer as a steward, driver, accommodation host or leaflet distributor? Would you like to meet new people and help deliver our special festival? We warmly welcome all volunteers - past, present and future! - to our Volunteer Briefing on **Tuesday, January 20th 2026 from 2.30pm to 3.45pm** at Reeth Memorial Hall. Find out what the roles involve, sign up to events and have a cup of tea.

Be part of Swaledale Festival's celebration of the seasons with our poetry call! Join us in celebrating the changing seasons through poetry. We're celebrating poets of all

ages, backgrounds, and experience levels. All entries will be considered for publication and celebration before and during Swaledale Festival 2026. For more information, please visit our website.-www.swalefest.org.

Rail diversions

Essential rail engineering works on the West Coast main line mean that trains from part of the West Coast line will be diverted onto the Settle-Carlisle line via Hellifield, travelling to and from Carlisle non-stop.

This engineering work starts just after Christmas and will last until mid-January. It will significantly increase the number of trains travelling - both ways - between Hellifield and Carlisle but they are scheduled to travel in between Northern's regular stopping trains. However, the fact that the West Coast trains will not be stopping at any local stations may confuse waiting passengers. You (and your visitors), students and all other passengers are reminded to allow plenty of time for car parking and then walking by the safe, legal route to your departure platform (or from your arrival platform).

Long-term planning and detailed preparations underpin this investment into major rail engineering work and we must hope they have fair weather for it - and that passengers on the diverted trains enjoy the wonderful winter scenery on the Settle-Carlisle route!

Settle-Carlisle Celebrations next year

(a) 2026 marks 150 years since the Settle-Carlisle line opened for passengers in 1876; S and C freight trains began in 1875;

(b) 2026 also marks 40 years since Garsdale and 7 other small stations re-opened on July 14th, 1986, after 16 years closure. More next time about both these 2026 anniversaries.

Bicentenary of the Stockton-Darlington railway (1825-2025). Still some celebrations to complete the year's programme, especially in the North of England;

(a) Dressed for Departure: Fashion and Textiles Exhibition at the Bowes Museum to Feb 1st;

(b) Inspiration, the rail industry's static exhibition train, touring many more venues across the rail network until June 2026. Booking essential via the Railway 200 website.



LEYBURN ARTS AND COMMUNITY CENTRE



Tuesday 2 December 6pm – French Film Festival screening – see website for full festival details
Love Affair(s) (N/C15+) 2hrs 02m

Friday 5 December 6pm – Celebrating 100th Anniversary of Community Cinema – **Ticket price of £3** – see website for further details
Singin' in the Rain (1952) (U) 1hr 43m

Friday 12 December 6pm – French Film Festival screening – see website for full festival details
The Bertrands' Farm (12+) 1hr 22m

Friday 19 December 6pm
It's a Wonderful Life (1946) (U) 2hrs 10m

COMING SOON: The Ballad of Wallis Island: Downton Abbey – The Grand Finale: I Swear

- You can book and pay online via our website.
- For a full list of what's on, head to our website or give us a call.

Thursday 4 December 2pm-4pm
Christmas Wreath Making Workshop

Thursday 4 December 7pm
Exhibition on Screen: Caravaggio

Friday 5 December 10am-midday
Fundraising Coffee Morning, Methodist Hall

Saturday 6 December 7.30pm
Evening with Paul Sowden

Sunday 7 December 10am-4pm
Shed Fundraising/Awareness stall, Middleham Key Centre

Sunday 7 December 2pm
Piece of Magic: Andre Rieu's 2025 Merry Christmas Concert: Merry Christmas

Thursday 11 December 7pm
Cinema Live: Westlife - Royal Albert Hall (25th Anniversary)

Thursday 22 January 7pm
National Theatre Live: Hamlet (with closed captions) (12 tbc)



The Old School House,
Richmond Rd,
Leyburn DL8 5DL



www.leyburnartscentre.com



01969 624510



Edie Peacock Hairdressing At the Parlour

Call: 07817 312906

Advertising

Boxed adverts: £6, £12, £18
(dependent on size)

There is a big reduction for six issues or more, so for six issues the totals are:
£25, £50 or £75

Greetings etc. £2

What's ons (non-commercial) are free

Contact for adverts:
Barry Cruickshanks
01969 667458

uwnlinput@gmail.com

Whilst we try to ensure that all information is correct we cannot be held legally responsible for omissions or inaccuracies in articles, adverts or listings, or for any inconvenience caused. Views expressed in articles are the sole responsibility of the person by-lined. Articles by committee members carry just their initials.

We appreciate being asked before any part of the Newsletter is reproduced.

Postal Subscriptions

If you would like to receive the Newsletter by post every month the cost is £16 per annum. Please pay by BACS (Account 74237721, sort code 51-61-33) and send your full address details to uwnlinput@gmail.com. Or send a cheque for this amount (made out to the Upper Wensleydale Newsletter) plus your details to Karen Jones, Skellgill Cottage, Skellgill Lane, Askrigg, DL8 3JG.

Published by

The Upper Wensleydale Newsletter
Lilac House, The Holme, Hawes, DL8 3QR
01969 667458

Email for submission of articles, what's ons, letters etc.: uwnlinput@gmail.com

Newsletters on line, simply search on "Upper Wensleydale Newsletter"
Archive hard copies back to 1995 are in the Dales Countryside Museum resources room.

Editors: Barry Cruickshanks,
Kevin Davis,

Committee: Malcolm Carruthers, Roy Chapman,
Tony Hutchinson, Alyson Jones, Karen Jones
(Treasurer), Alastair McLachlan
Neil Piper, Karen Prudden,

Founded in 1995
by the late Alan S. Watkinson

Your pull-out pages of December and New Year events and greetings

SPECIAL CHURCH AND CAROL-SINGING EVENTS

ASKRIGG, STALLING BUSK AND BAINBRIDGE AREA

| | | | | |
|----------------------|---------------|--------|---------|---|
| St Oswald's, Askrigg | Saturday | Dec 6 | 10.00am | Coffee Morning in the Church |
| | Sunday | Dec 7 | 2.00pm | The Christmas Memorial |
| | Sunday | Dec 14 | 5.00pm | Community Christingle and Christmas Tree Festival switch on |
| | Monday | Dec 15 | 7.00pm | *A Christmas Cracker concert |
| | Tuesday | Dec 16 | 6.00pm | *Mulled Wine, Hot Chocolate and cake |
| | Wednesday | Dec 17 | 7.30pm | *Concert by ALSP with guests |
| | Thursday | Dec 18 | 12-noon | *Soup Lunch |
| | Friday | Dec 19 | 6.00pm | *Mal Carruthers plays the organ |
| | Saturday | Dec 20 | 5.00pm | *Candlelit Evening Prayer |
| | Sunday | Dec 21 | 9.00am | BCP Holy Communion |
| | Christmas Eve | | 5.00pm | Carols on the Cobbles |
| | | | 11.30pm | Holy Communion |
| | Sunday | Jan 4 | 10.30am | The Gathering |
| | Sunday | Jan 11 | 10.30am | Café Style |
| | Sunday | Jan 18 | 10.30am | Morning Prayer |
| | Sunday | Jan 25 | 10.30am | Holy Communion |

*part of the Christmas Tree Festival Week – see poster on page 15 for details

| | | | | |
|-----------------------------|---------------|--------|---------|---|
| St Matthew's, Stalling Busk | Christmas Eve | | 3.00pm | Carols |
| | Sunday | Jan 11 | 12.30pm | Soup Lunch followed by Afternoon Prayer |
| | Sunday | Jan 25 | 2.30pm | Afternoon Prayer |
| | | | 3.15pm | Pathfinders and Explorers |

| | | | | |
|---------------|--------|-------|---------|-----------|
| Sycamore Hall | Friday | Dec 5 | 10.00am | Communion |
| | Friday | Jan 2 | 10.00am | Communion |

HAWES AREA

| | | | | |
|----------------------|---------------|--------|---------|---|
| St Margaret's, Hawes | Saturday | Dec 6 | 2.00pm | 'Magic of Christmas' concert, See p.40. |
| | Sunday | Dec 7 | 10.30am | The Gathering Toy Service. See p.24. |
| | Saturday | Dec 20 | 2.00pm | Family Film Afternoon |
| | Sunday | Dec 21 | 10.30am | Family Nativity Service |
| | Christmas Eve | | 7.00pm | Carols in the Market Square |
| | | | 9.00pm | Midnight in Bethlehem Communion |
| | Sunday | Dec 28 | 10.30am | Benefice Communion |
| | Sunday | Jan 11 | 10.30am | Holy Communion |
| | Sunday | Jan 18 | 10.30am | Family Service |
| | Sunday | Jan 25 | 10.30am | Holy Communion |

| | | | | |
|----------------------------|---------------|--------|---------|-------------------------------|
| St Mary & St John, Hardraw | Wednesday | Dec 3 | 7.00pm | Carols by Candlelight Concert |
| | Sunday | Dec 14 | 10.30am | Benefice Holy Communion |
| | Christmas Day | | 10.30am | Benefice Christmas Communion |
| | Sunday | Jan 11 | 9.00am | Morning Prayer |
| | Sunday | Jan 18 | 9.00am | Holy Communion |
| | Sunday | Jan 25 | 9.00am | Morning |

Evening Prayer by telephone is at 4.00pm every Sunday. See website www.upperwensleydalechurch.org/services.

HAWES AREA (continued)

| | | | | |
|------------------------|--------|--------|---------|---|
| Gayle Methodist Chapel | Sunday | Dec 7 | 10.30am | At St.Margaret's Hawes. Churches Together Toy Service |
| | Sunday | Dec 14 | 4.00pm | United Services Carols by Candlelight |
| | Sunday | Dec 21 | 2.00pm | Sunday Service led by Liz Haythornthwaite |
| | Sunday | Dec 28 | 10.30am | At Leyburn Methodist Church |
| | Sunday | Jan 4 | | No Service |
| | Sunday | Jan 11 | 2.00pm | Covenant Service led by Rev Jo Brown |
| | Sunday | Jan 18 | 2.00pm | Sunday Service led by Ruth Poultney |
| | | | | |
| | | | | |
| Hawes Junction Chapel | Sunday | Dec 14 | 2.30pm | Carols by Candlelight. See p.6 |

AYSGARTH AND WEST WITTON AREA

Church Services: In case of bad weather please check our website at penhillbenefice.co.uk/services for updates. There will be a Telephone Service each **Sunday** at **9.30am**. Dial **0333 0110 946** and enter room number 61337190# and PIN 7450#. (Local charges apply).

| | | | | |
|--------------------------------|---------------|--------|---------|--|
| St Andrew's, Aysgarth | Sunday | Dec 7 | 11.00am | Holy Communion |
| | Sunday | Dec 21 | 11.00am | Holy Communion and Carol Service |
| | Christmas Eve | | 11.30pm | Midnight Communion |
| | Christmas Day | | 11.00am | Christmas Praise |
| | Sunday | Dec 28 | 11.00am | Morning Prayer with Baptism |
| | Sunday | Jan 4 | 11.00am | Holy Communion |
| | Sunday | Jan 18 | 11.00am | Holy Communion |
| | Sunday | Jan 25 | 11.00am | Morning Prayer |
| St Bartholomew's, West Witton | Thursday | Dec 4 | 9.30am | Holy Communion |
| | Sunday | Dec 7 | 11.00am | Holy Communion |
| | Sunday | Dec 21 | 6.00pm | Carols and Readings |
| | Thursday | Dec 18 | 9.30am | Holy Communion |
| | Christmas Eve | | 4.00pm | Crib Service |
| | Sunday | Dec 28 | 9.30am | Holy Communion |
| | Sunday | Jan 4 | 11.00am | Holy Communion |
| | Thursday | Jan 8 | 9.30am | Holy Communion |
| | Sunday | Jan 11 | 10.30am | Holy Communion, Penhill Together |
| | Sunday | Jan 18 | 11.00am | Morning Prayer |
| | Thursday | Jan 22 | 9.30am | Holy Communion |
| | Sunday | Jan 25 | 9.30am | Holy Communion |
| Cote Gill, West Witton, DL84LT | Thursday | Dec 18 | 10.30am | Christmas Coffee Morning in aid of The Children's Society. There will also be a raffle. Everyone is welcome. |

CARPERBY, REDMIRE, PRESTON, THORALBY AND WENSLEY AREA

| | | | | |
|---------------------|---------------|--------|---------|----------------------------------|
| St. Mary's, Redmire | Sunday | Dec 7 | 9.30am | Morning Prayer |
| | Sunday | Dec 14 | 10.30am | Holy Communion. Penhill Together |
| | | | | Christingle Service |
| | Sunday | Dec 21 | 9.30am | Carol Service |
| | Christmas Eve | | 3.30pm | Crib service |
| | | | 8.00pm | Holy Communion |
| | Sunday | Jan 4 | 9.30am | Morning Prayer |
| | Sunday | Jan 18 | 9.30am | Holy Communion |

| | | | | |
|-----------------------------------|---------------|--------|---------|-----------------------|
| Thoralby Village Hall | Saturday | Dec 20 | 2.00pm | Carols |
| Redmire Village Hall | Wednesday | Dec 3 | 10.30am | Church Coffee Morning |
| | Wednesday | Dec 17 | 2.00pm | Church Afternoon Tea |
| | Wednesday | Jan 7 | 10.30am | Church Coffee Morning |
| | Wednesday | Jan 21 | 2.00pm | Church Afternoon Tea |
| Holy Trinity, Wensley | Christmas Day | | 10.00am | Christmas Communion |
| Thornton Rust Mission Room | Sunday | Dec 21 | 3.00pm | Carol Service |
| | Sunday | Jan 25 | 3.00pm | Evening Prayer |
| Carperby Institute | Sunday | Dec 21 | 6.30pm | Carols and Readings |
| St Margaret's, Preston-under-Scar | Sunday | Dec 7 | 9.30am | Holy Communion |
| | Sunday | Dec 21 | 9.30am | Holy Communion |
| | Sunday | Dec 21 | 6.30pm | Carols |
| | Sunday | Jan 4 | 9.30am | Holy Communion |
| | Sunday | Jan 18 | 9.30am | Holy Communion |

Davinia Hinde and the team at Bainbridge Vets would like to wish all of our clients and patients a Merry Christmas and a Happy New Year. Your continued support means so much to us as we wish you all the best for 2026 and all the exciting plans we have at the surgery.



Dave Clarke won't be sending Christmas cards this year but sends warmest thoughts and best wishes for Christmas and the coming year - Eat, drink and be merry - Regards Clarke!!'



Karen and Tim at Sycamore Country Store wish all their customers and suppliers a very Happy Christmas and a Peaceful New Year. Thank you for your support during 2025. Many thanks also to our family and friends who have been a great support during challenging times and who we very much value.



Edwin and Madeline Pratt would like to wish friends and family a Merry Christmas and a Happy New Year.



Hawes Silver Band

Invite you to join them for
**Carols, Music and Mince
Pies**
in

Hawes Market Hall

**21st DECEMBER
2025 at 3.00pm**

No entry fee - donations
welcome with proceeds for
local organisations

Veronica Dinsdale

would like to wish everyone
a Merry Christmas and a
Happy New Year.



Best Wishes to family and
friends wishing you all a
Happy Christmas and a
peaceful New Year.

From **Myra Staveley**



Wishing everyone a peaceful
Christmas and a healthy,
rewarding New Year.



Mary and Kelvin Young.



Wishing all my friends and
family a Merry Christmas
and a happy New Year.

From **Beryl Percival**



Jean Sleightholm wishes
all her friends and neighbours
a Happy Christmas and best
wishes for the New Year.

Rob and Val Ward
send Christmas wishes to
all. Peace and good health
for the New Year.



Judy Fawcett says
Season's Greetings and
happy New Year to family
and friends.



Denise Mason says
Merry Christmas and a
happy New Year to family
and friends.

Jim Lambert would
like to wish family and
friends a very Merry
Christmas and a happy and
healthy New Year.
A donation instead of cards
to Cancer Research UK.



**Anne Moore
(Carperby)** wishes

all family and friends a
Happy Christmas and a
good healthy New Year.

Donating money to local charities in
lieu of cards.



Joan Haigh wishes all
her friends, and neighbours a
very Happy Christmas and
best wishes for 2026.



Carol and Sharron
wish all their clients at
Twisted , Town Foot, Hawes
as very Merry Christmas and
a happy New Year.

Georgina Devine, from
Sedbergh, would like to wish
all her friends in Hawes a
Merry Christmas and a
happy New Year. It is
always nice to come on the Little
White Bus.



**Eric and Kathleen
Bell** would like to wish
family and friends a very
Merry Christmas and a
Happy New Year.

