

THE UPPER WENSLEYDALE NEWSLETTER

Issue 330

May 2026

**Donation please:
50p suggested**



Covering Upper Wensleydale from Wensley to Garsdale Head plus Walden
and Bishopdale,
Swaledale from Keld to Gunnerside plus Cowgill in Upper Dentdale.

Guest Editorial

Flying used to be relatively easy until the airlines decided to put some of the work load onto the passengers. It's not so many years ago when the only way to check in would be to go to the airport, queue at a desk and hand over your tickets and passport. You would lift your suitcase onto the scales and look nervously at the digital screen, hoping that the extra pair of socks you had packed at the last minute wouldn't put you over the luggage allowance. You would be asked the inane question, "Have you packed your bag yourself?" You would like to say, "Do I look as though I've got a houseful of servants?", but you don't, you answer "Yes" and as your suitcase disappears, you are handed back your documentation, which now includes a paper boarding pass and told to have a good flight. Job done.

You can still check in like this, but most airlines want you to check in on-line before you fly and what's more, some have the nerve to charge you for doing so, depending upon which seat you chose. You have to do it, if your party all want to sit together and you don't want to end up in the middle seats.

Sometimes checking in on-line is straight forward, sometimes it's not. You can be in the middle of a transaction and the screen goes blank, except for a message saying "This page cannot refresh". Well what do I do now, have I booked my seats or what? You wait for what seems an eternity and are just deciding whether or not to get in touch with the helpline when the page jumps back into life, the screen refreshes and you can complete your booking, but for a while it's stressful.

Seats booked, you now have to print off your boarding pass, or have it sent to your phone. I still find this a bit strange, giving yourself permission to board a plane. Such is my confidence in technology that when I printed off my first boarding pass I went to the check-in desk and asked if they would scan it to see if it worked. The young man behind the desk was very helpful and assured me that I would have no problem with it. I expect he was thinking, you have to amuse the old dears, they've not grown up with this technology.

Then there's bag drop. Sometimes there is someone from the airline to help you with this, but if not you have to hope that you have your wits about you and don't send your case to the wrong airport.

Next the dreaded security. That is not like it used to be. I once bought a decorative walking stick in Switzerland. I walked into the airport with it, put it through the scanner, picked it up and carried it onto the plane. Imagine doing that today? Security is often busy and noisy. You are shouted at, told where to stand, when to pick up a tray, what items of clothing to take off, put your electrical devices in the tray and asked "Have you got any liquids?"

While your possessions are being scanned, you go through the metal detector. You hope you don't bleep otherwise you're treated to a free massage. After this, it's the body scanner where you stand with your arms and legs akimbo trying to match your knee and elbow joints with those on the figure in front of you which looks as though you're trying to do a chimpanzee impersonation, but you've not done yet. Another scanner has recently been introduced. This one scans thick soled shoes. I must say, I rather approve of this scanner and I told the security man as much. I hope he passes on my feedback and they keep it, because not only does this piece of equipment cut out the need to bend down and untie your shoelaces, more importantly it eliminates the effort of trying to get up again!

At last you board the plane. I was once on a flight where there were a lot of empty seats. I was just getting comfortable when I was approached by a crew member who informed me that by law, during take off and landing, someone had to sit by each emergency door. They had not got enough cabin crew to cover every door, so would I mind changing seats and sitting by one of the emergency exits. The upside to this was, I got a more expensive seat with extended leg room. The downside was, I spent the entire flight trying to memorise the instructions for opening the door in case there was an emergency and praying that there wouldn't be.

At last you can relax, (unless you're on door duty) and look forward to your holiday once you have gone through the formalities at your destination. Since Brexit travelling to Europe is not as straightforward as it was. Your passport has to be stamped on arrival and exit. Since October 12th 2025 non EU citizens entering the Schengen Area, are now required to have their fingerprints and photograph taken for biometric registration. This happens at the point of arrival and is causing some delays at the ports and airports.

Formalities now over you can look forward to your holiday and not think about officialdom until you return home and go through passport control. This was once fully manned by bored looking officials with repetitive eye strain through looking at too many photographs.

Now some of it is automated. You go into your own little booth and put your passport into a machine. There are four ways you can insert your passport into the slot and only one is correct. I usually get it right on the fourth attempt. If you do it correctly your photograph appears on the screen, the barriers open and you are admitted into the country. Sometimes even if the passport is in the correct position your photograph refuses to appear on the screen.

You've had a long and tiring day, you're getting more frustrated by the minute and there's a queue forming behind you that stretches nearly as far back as the runway. Just when you think you will never see your loved ones again, an official comes and leads you away making you feel like a criminal, or an illegal immigrant. All they do is glance at your passport and wave you through. You would like to say, "Why couldn't you have done that in the first place" and "The old ways were the best", but you keep quiet.

Now relieved to be back on home turf, all that's left to do is collect your case from the baggage hall and hope it's not like a previous flight when there was a shortage of baggage handlers and you were waiting nearly thirty minutes for your case to arrive on the carousel.

I've checked in myself, I've issued my own boarding pass, I've dropped off my own bag and I've even been on door duty. I've processed myself through passport control, but if asked, I would refuse to help unload the plane. You've got to draw the line somewhere.

Sylvia Turner



Eunice the Ewe

In April I was hiding in the Musical, Movies and More poster on page 4. The lucky winner is Louis Dinsdale of Gayle.

Where am I this month? To enter for the £10 prize, please include your postal address if replying by email.

Postal Subscriptions

If you would like to receive the Newsletter by post every month the cost is £16 per annum. Please pay by BACS (**Account 74237721, sort code 51-61-33**) and send your full address details to uwnlinput@gmail.com. Or send a cheque for this amount (made out to the Upper Wensleydale Newsletter) plus your details to Karen Jones, Skellgill Cottage, Skellgill Lane, Askrigg, DL8 3JG.

The accuracy, appropriateness or legitimacy of any product or service advertised in this publication is the sole responsibility of the advertiser and not of the Upper Wensleydale Newsletter.

<u>In This Issue</u>	<u>Page</u>
Guest Editorial	2
Competition	4
Little white Bus	5
Penhill Benefice Services	5
Old Advert	6
Swaledale Festival	8
Bob Foster	9
Central Dales Practice	10
Road Closures	12
Hawes School News	12
Mystery Picture	14
Eyes on the Skies	18
What's Ons	20
Upper Wensleydale Benefice Services	21
Heavens Above	23
Border Patrol	24
Notes from Thorney Mire	28
Wensleydale School	31
BAWB School News	35

**DEADLINE FOR COPY FOR
THE NEXT ISSUE IS
TUESDAY MAY 26TH
PUBLISHED ON JUNE 3rd**

May Competition

Here are some anagrams to named roads, lanes or tracks in our area.

1. GRAM ORGAN BEADS
2. CHARM HID GOA
3. DICE DRAGS OAR
4. MINK NEAR BALE
5. SHAKE BAND
6. SHY NEATER LOB
7. GEM HATTER PO
8. A TALL TEN WHINGE
9. TOWNIEST PEST
10. AN ABLE LEN
11. HARROW OWED IT
12. RACER RAGE PLOY DEN

Please send in your answers to arrive by **Tuesday, May 26th**. Remember to include the details of your nominated charity which will receive the £50 prize should you win.

Submission of articles

Please note that all submissions should comply with current copyright legislation. If submitted articles are not the original work of the person submitting them, then all relevant permission should be sought and granted for reproduction.

SANDERSON & CO.

FUNERAL DIRECTORS

A complete and caring funeral service provided by an independent family business established in 1879.



For personal and dignified attention in time of need please contact

Richard Sanderson
Leyburn Business Park DL8 5QA

Tel: 01969 623143 (24hrs)

Mobile: 07710 652348

Email: sandersonandcoleyburn@gmail.com

We offer Golden Charter Pre-payment Funeral Plans Please ask for further (written) details.

April Competition Answers

1. Peterborough
2. Stevenage
3. Grantham
4. Leeds
5. Peterlee
6. St Michael's Mount
7. Bury St Edmunds
8. Felixstowe
9. Chesterfield
10. Victoria
11. Dudley
12. Carlisle
13. Basildon
14. Ross on Wye
15. Fort William
16. Duncansby Head
17. Kendal
18. Portland Bill

A few correct entries this month. The winner is Andrew Ashenhust of Devon, whose chosen charity to receive the £50 prize is Christian Aid, Yorkshire.

Drop-off points and contacts

For news, articles, reports, letters, What's On dates, competition entries, suggestions and comments:- All 01969 numbers unless stated.

Hawes:	Community Office	667400
Bainbridge:	Sylvia Crookes, 3, Bainside	07483 828272
Askrigg:	Sykes Shop,	650535
Carperby:	Anthony Abraham Hall Garth	663243
West Burton:	Nadine Bell, Margarets Cottage	663559
Aysgarth:	Hamilton's Tearoom	663423
Redmire:	Kevin Davis West Cottage	624165
Thoralby:	Neil Piper Fernlea	663747
West Witton	Christine Barker, Chestnut Garth	624934
Preston and Castle Bolton	Alastair McLachlan	07817 709167

Penhill Benefice

Church Services: In case of bad weather, please check our website for updates at penhillbenefice.co.uk/services.

There will be a Telephone Service each **Sunday at 9.30am**. Dial **0333 0110 946** and enter room number 61337190# and PIN 7450# (local charges apply).

Sunday, May 3rd

9.30am Holy Communion
St. Margaret's, Preston under Scar.

9.30am Morning Prayer,
St. Mary's, Redmire.

11.00am Holy Communion,
St. Andrew's, Aysgarth.

11.00am Holy Communion,
St. Bartholomew's, West Witton.

Sunday, May 10th

10.30am Holy Communion Penhill Together Service, St Andrew's, Aysgarth.

Thursday, May 14th. Ascension Day.

7.00pm Ecumenical Holy Communion Service at Jervaulx Abbey. (East Witton Church if wet weather). With Bedale Band. Please bring your own seat. The collection from this service will go to Christian Aid. Please park across the road at the Tea Room Car Park.

Sunday, May 17th

9.30am Holy Communion,
St. Margaret's, Preston under Scar.

9.30am Holy Communion,
St. Mary's, Redmire.

11.00am Holy Communion,
St. Andrew's, Aysgarth.

11.00am Morning Prayer,
St. Bartholomew's, West Witton.

Sunday, May 24th Pentecost.

9.30am Holy Communion,
St. Bartholomew's, West Witton.

11.00am Morning Prayer,
St. Andrew's, Aysgarth.

6.00pm Evening Prayer,
Thornton Rust Mission Room.

Sunday, May 31st, Trinity Sunday

10.30am Holy Communion Penhill Together
Holy Trinity, Wensley.

May Mid-Week Services:

Thursday, 14th and 28th at 9.30am.

Holy Communion, at St. Bartholomew's,
West Witton.

Church Coffee Morning: **Wednesday, May 6th** from **10.30am to noon** at Redmire Village Hall.

Church Afternoon Tea: **Wednesday, May 20th** from **2.00pm to 4.00pm** at Redmire Village Hall.

Little White Bus

Two messages to our customers.

It is great when people recognise the drivers of the Little White Bus (LWB) as it approaches by waving 'hello' at them. Unfortunately our drivers cannot tell if the wave is just a greeting or they want to get on the bus. So can we please request that if you want the bus to stop you don't wave but give the driver a thumbs-up sign.

The LWB will make a stop and pick-up at all of the Dales villages on the timetable if you want it to but we must reduce the cost and delays involved in unnecessary journeys and diversions. If you live in Castle Bolton or Preston-under-Scar then the LWB will come to your village to collect you if (and only if) you have requested a pick-up by ringing the Hawes Community Office at least one day earlier. The number is 01969 667400.

Some of the LWB visits to Sycamore Hall, Worton Bottoms and Thoraby are also by request at least 24 hours earlier. You can see which stops need to be requested as they are highlighted in blue on the timetable at the bus stop. You can of course download a copy of the timetable at <https://littlewhitebus.co.uk/wp-content/uploads/2025/10/156-service-new.pdf> or collect one from Hawes Community Office.

One final request. If you do request a stop and your plans change please cancel the pick-up by the LWB by ringing the Community Office (even at 10 minutes notice) and save the LWB an unnecessary journey. We appreciate your custom, your smiles, and all your support. Thanks ever so much, it means a lot to our LWB drivers.

Old Photographs and Advertisements

Here is another page from 'Hawes and its Immediate Neighbourhood – An Illustrated Guide for Visitors' dating from around 1910. Visitors could get fishing lessons from James Blades Senior.

INGS HOUSE, HAWES.

BOARDING ESTABLISHMENT.

NEAR STATION. MOTOR GARAGE.

GOOD STABLING. MODERATE CHARGES.

The House stands within Two Acres of its own grounds.
Large Garden and Lawn facing South.

Hot and Cold Baths. Good Cooking and Attendance.

Terms according to bedroom selected and according to season.

Large Parties catered for. Coaching Parties arranged.

Telegrams: Ings House, Hawes.

PROPRIETORS,

Mr. and Mrs. MOORE.

JAMES BLADES, Senr.,

Practical Angler, HAWES.

50 years' experience. Trout Flies on Gut, Hair or Eyed Hooks, 1s. 6d. per dozen. Gut or Hair Casts, 6d. each. Gut or Hair Casts mounted with Four Flies, 1s. each. Worm, Maggot or Minnow Tackle supplied. Flies tied to Pattern.

Lessons on Casting the Fly and other styles of Fishing.

Orders promptly attended to.

M. GILL, HOSIER,

BERLIN WOOL and FANCY REPOSITORY,

•HAWES•

Gentlemen's, Ladies' and Children's Woolen and Merino Under-clothing. Worsted and Lambs' Wool Yarns. Smallwares, &c. Specialities: CANYASES and FANCY GOODS for Working. Ready Worked Goods. "Esterlea" All-wool Stockings.

ANDREW HAWKINS BUILDING CONSTRUCTION CONTRACTORS

NEW BUILDS | EXTENSIONS
BARN CONVERSIONS | ROOFING & GROUNDWORKS
APPROVED DAMP PROOFING & REMEDIAL TREATMENT SPECIALISTS

Tel: 0800 002 9779

Email: hawkinsbuilder@hotmail.com

Unit 5 Harmsby Business Park, Harmsby Road, Leyburn, North Yorkshire, DL8 5GA

**Saturday
July 18th
12-4pm**

Save the Date!

**St Margaret's
Festival Day**

Stalls Lunches Cakes

Community Raffle with Great Prizes!

Community Concert Fun at 7pm!

St Margaret's Festival 2026

This bi-annual event is happening again this year in the busy town of Hawes. St Margaret's is a beautiful church right at the centre. Much is happening in the church, including regular children's services and it is a very popular venue for concerts with the glorious organ and large space. However we are in need of a new lighting system. This event will be a start to raising funds for this project. There will be a grand raffle, many stalls, refreshments and a concert to round the day off. We do hope you will save the date and support St Margaret's Festival on July 18th.

Maggie's Angels

DALE HEAD GARAGE

Town Head, Hawes

Tel.01969 667483

Fuel Available 24/7

News From Sycamore Hall

We are apparently now into summertime but I am not sure we can see that in the weather - yet. We hope that things will warm up as we are currently watching our gardener create a new patio area for us outside the summerhouse.

We have just received a new programme of events for the next couple of months which gives us plenty to look forward to. As the Newsletter is being printed, we will be enjoying a presentation by Gerard Marsh from the Yoredale Cave and Mine Group and hope that some of you will have joined us.

Llianna, our Beauty Therapist will be with us on **Monday, May 11th**. If you would like to enjoy some pampering, get in touch with Lianna to make an appointment (**07792-086189**). Her next visit will be on **Monday, June 15th**.

On **Wednesday, May 13th**, we will be welcoming Susan Basnett who is coming along to talk to us about Dales Village Names. This should be really fascinating. Do join us at **2.00pm**.

We will be holding one of our popular Quiz and Supper evenings on **Saturday, May 23rd from 6.00pm**. There will be a general knowledge quiz followed by supper, prepared by Olive's Cafe. Teams of four are welcome - make up your own or come along on the evening and join with others. Supper will be chicken and ham pie with chips and peas (vegetarian alternative - mushroom risotto). We hope you will come along and join us for this fun evening. Please book tickets and order food via Sycamore Country Store or Sonja's Salon at Sycamore Hall. Tickets cost £15 per person, including food. There will be a cash bar on the night.

If you would like to come along to join our residents in any of their activities, or if you would like to start a new activity, please get in touch as we are always looking for something to keep us busy. Meanwhile, our regular activities continue as follows:-

Mondays at 2.00pm - 'Knit and Natter'

Tuesdays at 10.30am - Bingo or Quiz

Thursdays at 10.30am - Coffee Morning

Fridays at 11.00am - Gentle Seated Exercise with Janet Seymour

Every Weekday at 2.00pm - Dominoes

Monthly services take place with Revd Dave

Clark and the local Methodist Preachers. Please check for dates each month. You are very welcome to join us for any of these activities. We love to see new faces as well as familiar ones and can offer a warm welcome.

Our independent businesses are open, as usual. Sycamore Country Store is open **Monday to Friday, 9.00am to 1.00pm** for your everyday shopping needs with regular deliveries of fresh milk, eggs, bread, pasties, pies and cakes. Come and visit us to see our range.

Sonja's Hair Salon is open **Thursdays and Fridays 9.30am to 2.00pm and Saturdays 9.30am to 1.00pm**. If you wish to make an appointment please try to do so at least one week in advance to ensure you can get booked in. Maisy's Little Gift Shop will be open the same hours. Olive's Cafe is open to all from **8.30am to 4.00pm** daily for breakfast, lunch and tea as well as takeaway. Fish and chips are available as a takeaway on Fridays - check out Facebook for details and other options. If you want to go along for the delicious Sunday lunches, it is best to make a booking as it gets very busy. Contact **Emily on 629826**.

The Post Office is with us on **Mondays and Wednesdays between 9.00am and 11.00am** for your posting and banking needs, and the library is open every day **from 8.30am to 7.00pm**.

Come and pay us a visit - you don't know what you are missing. If you have any queries or would like to discuss the availability of apartments, please contact the **Manager, Nicky Cooper, on 0370-192-4055**.

SALE at Maisy's Little Gift Shop at Sycamore Hall

10% off selected gifts, clothing and toiletries
Come along and grab a bargain!



Bowen Technique

Gentle healing to reset and balance the body and nervous system.

Treats a wide variety of symptoms including muscular and joint pain, asthma, stress, sleep issues and back pain.

to book an appointment

Contact 07825 640 120

boweninthedales@gmail.com



Swaledale Festival - Events in May

The 2026 Swaledale Festival starts on **May 23rd**, launching two extraordinary weeks of world-class music, creativity and discovery across the northern Dales.

The opening weekend features the dynamic violin and guitar duo Braimah Kanneh-Mason and Plinio Fernandes, alongside the UK debut of the ethereal vocal ensemble SYSTIR in Grinton.

Audiences can also look forward to performances from effervescent pianist Jeneba Kanneh-Mason (**May 29th**, Richmond), and master of the kora, West Africa's 22-string harp – Suntou Susso (**May 28th**, Grinton).

Multi-instrumentalist and singer Eleanor Grant, is joined by North Yorkshire artist Toby Pearson for a special Festival collaboration entitled Homecoming (**May 31st**, Grinton). The Festival welcomes acclaimed jazz vocalist Clare Teal (**May 30th**) to The Garden Rooms, Tennants, Leyburn:

The seasonal theme continues on **May 27th** in Richmond with bestselling author Sally Coulthard reading from her book The Wildlife Year, followed by the family-friendly All-Age Musical Seasons Safari that brings together double bassist Eleanor Grant, percussionist Delia Stevens, violinist Fenella Humphreys and accordionist Valerie Barr for a lively musical journey featuring excerpts from Vivaldi's The Four Seasons and other musical gems.

On **May 30th** Beth Daley leads Stir the Air, a relaxed creative writing workshop inspired by music and nature (Hawes), while shepherdess Alison O'Neill shares the 'labour of love' behind life on a hill farm in the annual Reeth Lecture (in Reeth, where else?!).

A defining feature of the Festival is the interplay between music and landscape. Festival-goers can take part in woodland sound explorations with percussionist Delia Stevens (**May 28th**, Reeth), and a unique open-air painting workshop with visual artist Martin Lever and violinist Fenella Humphreys (**May 29th**, Gunnerside).

The much-loved sound of local brass returns, with performances from Muker Silver Band

(**May 24th**, Muker) and Reeth Brass Band (**May 30th**, Grinton), alongside Leyburn Band performing a lively programme of classics in the spectacular setting of Bolton Castle (**May 25th**).

Community voices are at the heart of the Festival, from Marske Choir's recreation of the traditional 'Concert Party' (**May 23rd**, Reeth) to a performance by Catterick's Military WAGS Choir (**May 30th**, Aysgarth).

Two free art exhibitions will run throughout the Festival: Martin Lever's Into Over Beyond offers an abstract journey through Swaledale's landscapes (**May 22nd to June 3rd**, The Station), while Composed by the Land showcases photographers Gray Walker and Debbie Allen capturing the beauty and rhythm of the Yorkshire Dales (**May 22nd to June 7th**, Hudson House).

Beyond the stage, the Four Seasons Poetry Call will showcase poems from the community, inspired by the natural world and appearing in inventive ways throughout the Festival.

To open up the Festival and invite even more people to enjoy it, a limited number of £10 tickets for selected events will be released each Monday in May. Follow the Festival's social media channels for details. For tickets and full programme details see www.swalefest.org.

Leyburn community shed **Sale**

May 8th and 9th
10-4pm
at Leyburn Arts and Community Centre
Plant Fayre

Hand Tools, Power Tools, Bric-a-Brac, Household, Electrical, and various other items - all being sold to raise funds for the shed.

Plus - An additional table of handmade wooden items, being sold in support of Ukraine.

Tables of stuff you never imagined you needed, at prices you won't believe.
Support your local shed by filling yours!

New Forest for Ukraine

The Old School House

Bob Foster - Time For A Rest

Somehow, I am told that Bob Foster has reached retirement age. I have no idea how as he always seems so lively. Anyway, it is apparently true that at the end of March Bob hung up the keys to his coach business for the last time. Bob is not the sort of person to sit around doing nothing so we expect that he has already lined up things to keep his days full.

He has been involved with the Bainbridge and District Motor Club for many years so he may be able to dedicate more time to this and, if all else fails, no doubt his wife will have a list of jobs to be done at home.

Bob has been serving the residents of the Dales for 25 years and there can't be many families who have not entrusted the transporting of their children to the local schools to Bob and his team of drivers. In fact, there are probably some local residents who Bob took to school many years ago and who are now sending their own children on the same journeys.

We are so grateful to Bob and his team for looking after our children so well (despite some of them no doubt being a bit more challenging than others.) and getting them safely to and from their schools, not to mention numerous outings and swimming lessons, in all manner of weather conditions.

I understand that on his retirement, the BAWB schools decorated a bus in honour of Bob and gave him a really special send off, for which he is very grateful and touched. There is bound to be a bit of him that will miss his daily journeys with those lovely children.

Whilst these school runs may have been the mainstay of the business, Bob has also taken many other local residents on outings - not least of whom are the ladies of the Women's Institute who, as we know, are rarely at home with their feet up.

Over the years he has also done many memorable 'Up Dale, Down Dale Booze Cruises' and trips to and from Bongo's Nightclub - memories of which could probably fill a book - if anyone was brave enough to write it.

In short, Bob, Jayne and their team have been a huge part of life in the Dales for a very long time and have undoubtedly touched the lives of most people living here. We will all have our memories of times 'on the buses' and you never

know, he may be tempted back onto the roads if help is needed locally. If that does happen, don't forget to give him a wave.

So, on behalf of all your customers a huge THANK YOU to Bob, Jayne and their entire team. We are so grateful for everything you have done and for always being cheery, obliging, knowledgeable and entertaining.

We hope you enjoy having a bit more time on your hands. Enjoy a well-deserved long, happy and healthy retirement.

K.P.

Wensleydale Rail News

Spring Indian Inspired Afternoon Tea Train – **Sunday, May 3rd** - Join us for an Indian-inspired afternoon tea this May! Enjoy a scenic journey through the Yorkshire Dales whilst being served a glass of prosecco and then a selection of sandwiches, keema puff pastries, gulab jamun and cakes on delicate vintage china with unlimited tea and coffee. For more information and to book – <https://wensleydale-railway.co.uk/indian-afternoon-tea-spring-2/>.

The Gin Train Experience - All aboard The Gin Train Experience! We are pleased to announce that we will once again be hosting the Taplin and Mageean Gin Train. Enjoy a full range of their award winning Gin and Tonic from the comfort of a private carriage travelling through the spectacular Yorkshire Dales scenery on our Railway. They will run on **May 23rd, June 27th, July 25th, August 15th, September 19th and October 3rd**. For more details and to book see - <https://shop.taplinmageean.co.uk/collections/taplin-mageean-experiences>.

Model Rail Show – **May 9th and 10th** at Leeming Bar Station - This weekend event will feature two days of trains big and small, and we will have layouts of various gauges from N to O on display and trade stands in attendance. For more information - <https://wensleydale-railway.co.uk/model-railway-weekend/>.

Home Fleet Diesel Gala – **May 23rd to 25th** - Diesel fans, join us at Leeming Bar station for three days of diesel action over the Spring Bank Holiday weekend. This event is still in the planning stage. More information including loco rosters and timetables will follow soon at - <https://wensleydale-railway.co.uk/home-fleet-gala/>.

Facebook Message from the Central Dales Practice

As we are sure you've heard we are working with the ICB (Commissioners) and the other GP Practices across Richmondshire to find a viable and sustainable solution for the patients of Reeth Medical Practice.

At the present time we are looking at all options and working through these in detail. As you know, timeframes are tight so we need to move fast. We heard about the closure in the same way everyone else did and since then, have been actively trying to find solutions.

The GP Practices across Richmondshire are united in working together to retain services in Reeth and as a Practice we will play our part. The reality is we can plan and organise this, or the Reeth patients will be allocated to us at the end of May with no planning (which wouldn't be safe). We need to get this right for everyone.

We care about our community and we care about our patients. We hope you can all trust us when we say we do not want our current services adversely affected and we are working hard behind the scenes..

Obviously we need more clinical members of staff to look after patients and we are seeking support from local Practices whilst recruiting. In addition we will need to expand the whole team whilst being mindful of the physical space we have available. Any plan must and will include on site care in Reeth.

Nothing as yet has been agreed, nothing as yet is official and nothing as yet has been signed. We are simply working together to look at solutions and how this would work. Things are moving fast and we are doing all we can to get this right. Please bear with us and please, as a community, get behind us and support us because trust us, this is a difficult time and we are doing our best.

Yoredale Art Club Annual Exhibition

This will be held at The Methodist Hall, Leyburn DL8 5AT on bank holiday weekend: **Friday, May 1st to Monday, May 4th**. Open **10.00am – 4.30pm** daily except **Sunday, May 3rd: noon until 4.30pm**. Everyone welcome - admission is free. Light refreshments available to purchase and a daily raffle for an original painting.



Mike Addison FRCO.C.
OPTICIAN

Mike Addison Optician

Market Street, Kirkby Stephen,

017683 71555

Email : infoks@mikeaddisonoptician.com

- Providing eye care for all the family
 - Private & NHS patients welcome
 - Children & over 60's receive free eye examinations
 - Supplier of all spectacle & vision related products
- or The Shire Hall, Appleby, 017683 53199

Feather and Fern Florist

We create beautiful bespoke gift bouquets for every occasion.

From elegant wedding flowers and memorable event arrangements to thoughtful funeral tributes.

Each design is crafted with care and attention to detail.

Based at Unit One, East Borwins Farm, Bainbridge, DL8 3EP.

Call **Shannon on 07807 912985** or email featherandfern@outlook.com.

Local delivery and collection available

**SCOTTS
HALL
& BIRTLES**
SOLICITORS

For all your legal requirements offering a full range of services. Hawes DL8 3QL, Tel 667171 and at Leyburn, Golden Lion Yard, DL8 5AS, Tel 01969 625526.

email; info@shblegal.co.uk

Regulated and authorised by the Solicitors Regulation Authority

Road Closures affecting DalesBus

Various road closures in Upper Swaledale and Upper Wensleydale are expected to disrupt DalesBus services 80, 830, 831 and 858 in the next few weeks - please check here before travelling as details of the road closures are subject to change.

On **Sunday, May 3rd** and **Bank Holiday Monday, May 4th** Northern DalesBus services 830 and 831 are expected to need to divert between Simonstone and Hawes via Hardraw due to the closure of Brunt Acres Road. No bus stops will be missed, but the diversion may cause some minor delays to these services.

On **Saturdays, May 9th, 16th and June 6th** DalesBus 80 will be unable to run between Ribbleshead and Hawes, and will run between Lancaster, Ingleton and Ribbleshead only. We hope to run extra journeys from Ribbleshead to Ingleton connecting with the Yorkshire Dales Explorer train - details to be confirmed.

On **Sundays, May 10th, 17th and June 7th** DalesBus 830 and 858 will be diverted to serve Garsdale Station instead of Ribbleshead Station. Full details will be posted here when available.

On **Sunday May 10th** the Buttertubs Pass will be closed, so DalesBus 830 and 831 will be diverted between Hawes and Reeth, and will not call at Muker, Gunnerside or Low Row.



The Dog Shed
Grooming & Teeth Care

Dog grooming and teeth care
in Leyburn

Level 2&3 City & Guilds qualified
Emmi-pet teeth cleaning
Fully insured
One-to-one, quiet setting

Call Sarah on 07739 716344
or find us on Facebook!

Alex Kravchenko

BSc (Hons) MChS

Chiropodist / Podiatrist
Member of the Health Professions Council

Practising at
Yorkshire Foot Clinics
25, Frenchgate, Richmond DL10 4NZ
Bishop Auckland/ Hawes 667449

Clinic Tel 01748 850020
Email: yorkshirefootclinics@yahoo.com

McGARRY & Co. Solicitors

From small personal matters to larger commercial transactions, for personal advice in an impersonal world.

Market Place, Hawes,
North Yorkshire DL8 3QS
Telephone No 01969 666290
or email
office@mbmcgarry.co.uk

Farm and Home visits by appointment

Regulated by The Solicitors Regulation Authority
No. 553987

STURDY TRAVEL

INDEPENDENT TRAVEL SPECIALISTS

Now at Toll House (Next to Spar)
Market Place, Hawes DL8 5QX
Also at 1, Golden Yard, Market Place,
Leyburn, DL8 5AS

For all your travel needs, home and abroad

Call: 01677 422826

Email: robert@bakewelltravel.co.uk

Part of Bakewell Travel

ABTA No. P8596

Hawes School News

Music in school

We have received notification of a Music Mark Award from North Yorkshire Music Service which recognises our commitment to Music at Hawes School. This complements the trophy and a plate won by our KS2 children for their performances in the Wensleydale Tournament of Song at Tenants' in Leyburn on March 20th, as reported in last month's news.



We were also gifted a Bursary for school to spend on enhancing our music provision further.

Easter Service

We were able in the last week of the Spring Term to visit St Margaret's Church as a whole school for our Easter Service. It was wonderful having Dalesplay join us for this special celebration. The children joined in the service by reading poems and prayers and our KS2 children were able to share some of their winning entries from the Tournament of Song. It was great to share this with our school parents and the wider community of Hawes. Thank you to Rev Dave, Mrs Clark and Mr Hirst for welcoming us to the Church.

Clubs in school.

We are lucky to be able to provide after school clubs for our children in school. We have been

running Multi-skills and Streetdance after school since September. We are in the summer term able to reintroduce both our Yoga Club and also our Gardening Club. All the children attending these clubs enjoy the further enrichment of their school curriculum.

We are always interested in making connections with the community to extend our club offer. Please contact school if you have any expertise or experience in providing clubs for our children.

Contact details: Telephone **01969 667308**, email: hawes@ycatschools.co.uk or visit www.hawesprimary.co.uk.

Road Closure

B6255 Hawes To Ingleton - Drainage Works, Road And Boundary Walls Reinstatement

Please be advised that each of these phases will be carried out under a full road closure, 24 hours a day until completed

Phase 1 - East of Appersett Gill

This site is located on the B6255 approximately 1.5 miles to the southwest of Hawes, North Yorkshire. This phase will take place between **5th to 18th May**

Phase 2 - East of Long Gill Bridge

This site is located on the B6255 approximately 4.5 miles to the southwest of Hawes.

This phase will take place between **19th May to 1st June**.

Phase 3 - Widdale Head Bridge (High Bridge)

This site is located on the B6255 approximately 6.2 miles to the southwest of Hawes.

Hearing loss shouldn't make you feel isolated and anxious, we are here to help.



For all your hearing needs!

- Hearing test
- Free hearing aid trials
- Ear wax removal
- Tinnitus assessment and therapies
- Hearing aid repairs and servicing

 **Hear & Now**
Independent Hearing & Tinnitus Specialists

CALL 01765 278 744

8 Queen Street, Ripon, North Yorkshire HG4 1ED
info@hearandnowonline.co.uk
www.hearandnowonline.co.uk



Dales Garage

Services we provide
Exhaust, Diagnostics, Brakes, Welding, MOT, Suspension, Timing Belts, Clutches, Batteries, Tyres, Services. All makes and models.

Unit 2, Hawes Ind Estate, Brunt Acres Road
Hawes DL8 3UZ

www.facebook.com/dalesgarage1

Call – James 07399 513605

Tyler 07376 487776

Concert Success

Many people in the Hawes area will be familiar with the wonderful concerts presented by Mal Carruthers and Amy Cockett, usually in Hawes Church with Rev Dave. Over a dozen concerts have been staged and it was thought that using a new venue down dale might be worth a try. Well, the concert that took place at St Andrew's Church in Aysgarth on Saturday, April 18th was a huge success, enjoyed by nearly a hundred people.

The highlight of the night was the sheer professionalism of Amy's singing and Mal on the keyboard and organ. Many of us are used to the visual on-screen presentation introducing the music but many new members of the audience were amazed at how brilliantly it was all put together. Much of the credit for this must go to 'Magic' Mike Hirst, who applied his technical wizardry to the whole production. The main theme was music from the movies and musicals, so there were many familiar tunes in the repertoire. Amy sang beautifully and the music was hugely enjoyable. It was obvious that hours and hours of time had been spent on rehearsal, perfecting the performance.

Aysgarth Church had pulled out all the stops to put on a good show, with Revd Tom giving a lively turn as the night's MC, mountains of refreshments to consume at the interval and plenty of helpers. Many loyal supporters came from Hawes, but lots of others came from far

and wide, probably encouraged by the attractive posters pinned up throughout the dale. Entry was free but donations encouraged. Everyone was very generous and, astonishingly, the total takings are likely to be over £1,400. This will be almost enough to pay for the remaining pew cushions needed in the church. Sponsorship from local businesses also helped, notably the top raffle prize, which was a night and breakfast for two people at the Aysgarth Falls Hotel.

Mal, Amy and Mike are a terrific trio. This was their 14th concert. Their 15th is at Hawes Church on **Saturday, 27th June**, when they will present 'Musicals 2'. It'll be a great night. Don't miss it.

Applegarth Couture

www.applegarthcouture.co.uk

Made to measure
Wedding, evening and daywear,
tailoring and alterations.

Contact: **Rebecca Atkinson,**
Aysgarth
01969 629398 or 07521 030870

Firewood

Seasoned hardwood logs

Tel: 01969 662692
Mob: 07970 629227



Hamilton's Tea Room At Yoredale House,

Aysgarth

Licensed Tea Room

HOMEMADE FOOD,

Light Lunches, Clotted Cream Teas

Open Feb-Nov, 10.30am - 4.30pm

Closed Mondays and Tuesdays

Tel: 01969 663423

info@yoredalehouse.co.uk

Your local family owned Coach Operator



**COACH HOLIDAYS and
FULL DAY EXCURSION PROGRAMME**

Call 015242 41330 for our current brochures or visit
our website to view up and coming Holidays
and Day Trips

Email: enquiries@bibbys.co.uk

Website: www.bibbys.co.uk

WANTED - SCRAP CARS AND COMMERCIALS

FREE collection from all areas.

www.scrapcarmcumbria.co.uk

07825 293099

SYNTHIAN

Performing full-throttle live 80s anthems
Depeche Mode, Duran Duran, Erasure, OMD, Ultravox,
A-ha, Human League & more!

MARKET HOUSE FUNDRAISER
Market Pl, Hawes, DL8 3QX
Saturday 30th May 2026
Tickets £15

Tuesday Hawes Fish Market

Also door to door delivery every Friday. Pre-order or just turn up on a Friday at

Askrigg Stone Cross. 9.30am to 10.45am
Bainbridge playground. 11.00am to 11.30am

West Burton 12noon to 12.30pm

Thornton Rust W.I. Hall 12.45pm to 1.00pm

Mobile 07711 989590

Facebook Hawesfishmarket;

Email Hawesfishmarket@gmail.com

FOR ALL YOUR SEWING NEEDS

Contact. Sheila Kearton at
Woodhall, Askrigg

Alterations and custom soft furnishings

CURTAINS, ROMAN
BLINDS, CUSHIONS
DRESSMAKING AND
REPAIRS



Tel 01969 663484 or 07800 576925



Mystery Picture

The column in last month's mystery picture can be found at the doorway to Redmire church.

Where would you find this decorative archway?



PROUDLY YORKSHIRE FOR 140 YEARS

Throughout the Dales, WDS is your partner for every part of your financial life.

Tax returns, bookkeeping, payroll, business growth, wealth planning—we bring it all together so nothing is missed.

From Making Tax Digital to the latest Budget updates, let our local experts guide you now.

01969 623636

WALTERDAWSON.CO.UK

Withywood Stores West Witton



Proud to stock local produce,
Dales Daires, Curlew Dairy cheese, local
fresh meat, deli, pies, fruit and veg,
preserves/chutney, West Witton Honey

A selection of wines, local ales, Off-licence, takeaway coffee
Newspapers, magazines, maps, stationery, greetings and local
scenery cards. Parcelly service UPS, DHL, APC
Selection of household / Diy items. New lines constantly added.

Opening: Mon-Friday 8 am - 6 pm
Saturday 8 am - 6 pm
Sundays 8 am - 12 noon

withywoodstores@mail.com
Withywoodstore.co.uk

01969 326484

Wensleydale Bridge Club

Bridge: From the Kitchen Table to the Club!

Enjoy whist and other card games. Then why not give Bridge a try. Love your social Bridge games but curious about the 'Duplicate' world? Join Wensleydale Bridge Club every third Wednesday of the month for a friendly transition night.

Duplicate Bridge isn't about being a pro; it's simply about playing the same hands as everyone else to see how you fare. It's fair, fascinating, and a great way to sharpen your skills in a no-pressure environment. We offer a warm welcome, helpful guidance as well as tea and biscuits.

When: 3rd Wednesday of the month at 7.00pm. Where: Wensley Village Hall. Cost: £4
Any questions or no partner? No problem—we'll find you one. Contact ian.mayfield@sky.com to book your seat at the table.



nh flooring
Carpets • Laminates • Vinyls • LVT
Solid & Engineered Wood • Accessories

For All Of Your Flooring Needs!

NH Flooring in Richmond can fit quality flooring to any Houses, Apartments, Offices, Holiday Lets, Hotels, Pubs, Vans and anywhere else you want it.

We offer a complete flooring service including:
Supplying, Fitting, Screeding & Levelling,
Repairing, Uplift & Removals, Trimming,
Edge Whipping, Cladding and much more.


NH Flooring - Richmond
www.nhflooring.co.uk 01748 822834
Unit 6 Borough Court, Borough Road, Richmond. DL10 4SX



**WOODCRAFT STUDIO
and TIMBER SERVICES**
formerly Gayle Mill Trust

Gates, posts and fencing to suit all your needs.
Timber sales of larch and local hardwoods cut
and delivered for your own project.
Mobile sawmill to cut your own trees into
planks or beams.
Seasonal firewood delivered throughout the
Dales

Ring **07967 844636** for further details



Leyburn
Methodist Hall
Every
Wednesday
9.00am and
6.00pm

touching hearts, changing lives

No need to book Just come along and
start your journey to a slimmer you.

Call Helen for more info **07969 559998**

Better Health Massage

Mobile Therapist, 8am to 8pm, 7days
Improve overall general well being, inside and out.

Ruth Boddy MFHT, ITEC Dip. Massage
ruth@betterhealthmassage.co.uk

Fully qualified and insured
07773 781803
www.betterhealthmassage.co.uk




Hawes Christmas Lights present

TAKE THAT



RULE THE WORLD

SATURDAY 27th JUNE 2026

7.00 for 7.30pm

HAWES MARKET HALL

Ticket £25

Entry by Ticket only; £30 on the door

from lizlawson@hotmail.co.uk

Wensleydale Press: 01969 667575

No Bar - Bring your own drinks

Leyburn Arts and Community Centre

May means enjoying the Spring flowers and tree blossoms and getting stuck in back to our own gardening when the weather has improved (hopefully) for even the most reluctant gardeners! So in preparation for these activities we shall be holding our now annual Plant Fayre on **Friday 8th and Saturday, May 9th, 10.00am – 4.00pm**. As usual there will be a splendid choice of plants for every spot. We have some out on display already, if you wish to make an early start.

May also brings, as well as our regular Friday films (including Hamnet this month), live music with the 684's on **Saturday 9th**, the comedian James Acaster via Cinema Live, filmed at one of his sell out shows and an Exhibition on Screen of the works of Frida Kahlo. The previous screenings in this series have all been excellent and well attended; with an expert leading us on a personal tour of the artist's works and information about their lives which led them to be so creative.

The James Acaster film however, is something new for us, we don't usually have comedy performances and never someone so well known. The reviews have been very good so come and see what you think.

Looking further ahead to June we have National Theatre Live who bring onto our screens Playboy of the Western World. These are now being offered with subtitles - a boon for those with less than perfect hearing, like me! For nostalgia we have Twice Nightly - the Glory Days of Variety, a theatre production.

As always there are volunteer vacancies - this month our cooks have gone on holiday at the same time (which is very bad planning) so we are seeking cooks for the Lunch Club and Tuesday Club! Fancy that - volunteers having holidays?!

Best wishes from the team at Leyburn Arts and Community Centre.



Visitor Centre

Cheesy Afternoon Tea

£19 pp

Check out our menu refresh!

Calvert's Restaurant and

1897 Coffee Shop

New Menus

Yorkshire Wensleydale Cheese

Experience: Kids Go Free

Weekends and School Holidays

Keep up to date on

Facebook and Instagram

wensleydale.co.uk 01969 667664

The Iron Maiden

Not enough hours in the day?

Fed up of never ending ironing?

My ironing service is definitely a way of buying back much needed quality time in a busy life!

Tracy Hume

07527 796523 or 01969 666048.

Can arrange collection/delivery

Dales Charity Bingo Report

An excellent turnout for our April bingo night in Hawes Market Hall and we were delighted to see more younger players come along and join in during their school holidays. The night was to support of the Bainbridge Village Hall Committee who laid out a wonderful raffle table, ensuring most tables took home at least one prize.

The evening raised £574 for the Bainbridge Village Hall Maintenance Fund, which is being put straight to use to help repair recent damage to the exterior of the building. Thank you to everyone who came along and supported the night.

Our next bingo night will be held in Hawes on **May 13th** for Hawes in Bloom – please see our advertisement below. If you would like to know more, please email us at dalescharitybingo@gmail.com.



Wednesday 13th May 2026
Hawes Market Hall

Entry from 7.00 pm, for
Eyes down at 7.30pm

Tea, coffee available during the break

IN AID OF HAWES IN BLOOM



Registered
Heating
Business



J.Parfitt Plumbing & Heating Ltd

All aspects of domestic / commercial
plumbing and heating work undertaken

Phone: **01969 650665**

Mobile: **07882 005261**

www.parfittplumbing.co.uk

S Peacock

Woodwork and Decorating

- Fitting of skirting/architrave, doors, shelving
- Wood panelling •Bespoke Furniture
- Painting •Wallpapering

Contact Shaun on: **07794 246392**

Email: shaunpeacock1983@gmail.com



**Springbank
Logs**

Seasoned Firewood Logs For Sale

Hardwood and Softwood available.
Bulk Bags, Bulk Loads and smaller
bags available, also kindling bags.
Can deliver locally – Hawes Area

01969 667916 after 5.00pm
Mobile: 07974 507825
any time; P.O.A

JOHN & TED DINSDALE

Builders ~ Roofers ~ Renovations ~ Extensions

*All aspects of property maintenance.
Fireplaces, Wood Burners supplied and fitted*

01969 667 718 ~ 07511 424 865

MFW Aga & Boiler Services

Specialising in the servicing of Aga / Rayburn
cookers and domestic oil boilers.

All Dales area covered

For service please contact Mike on:

Phone: **01609 779751** Mobile: **07731 349276**



The Friends of the Dales charity has the following events scheduled to support its Eyes on the Skies campaign speaking out against birds of prey persecution:

Birding for Beginners: Saturday, May 9th, 10.00am – 4.00pm.

Designed especially for 18-35 year olds, this event offered in collaboration with the Upper Wharfedale Field Society, comprises an informal but informative morning session near Grassington to get you clued up on what to look (and listen!) for.

In the afternoon participants will then venture out on a 4 to 5 mile scenic walk, spotting birds along the way and learning how different species use the landscape throughout the year. To book email: victoria.benn@friendsofthedales.org.uk.

Online Talk – Talking Raptor Persecution with Dr Ruth Tingay: *New date* **Wednesday, May 20th, 5.30pm – 7.00pm.**

A unique opportunity to hear from wildlife conservationist Dr Ruth Tingay, who has worked in the field of raptor research and conservation for more than 30 years. A former President of the international Raptor Research Foundation, Ruth now focuses on campaigning against the illegal killing of birds of prey in the UK through the blog Raptor Persecution UK. Ruth is also a co-director of the wildlife conservation organisation Wild Justice, with Chris Packham.

Book at www.friendsofthedales.org.uk/events.

Kathy Fawcett DipPFS
Financial Adviser



EMERALD
ASSOCIATES

01969 624242  07866 132787

Leyburn u3a

A Working Artist in Wensleydale

On **Friday, May 15th** join us for our AGM and find about our current projects and future plans. The brief formal meeting will be followed by a short talk 'A Working Artist In Wensleydale' by local artist Lynn Ward.

Lynn is full time commercial artist based in Golden Lion Yard, Leyburn and known for murals and landscape painting. Being born and bred in Yorkshire, her artwork is strongly inspired by our stunning surroundings.

She has been in business for over 25 years creating a wide range of artwork from pantomime scenery, murals in restaurants, right down to personalised illustrations.

Join us and enjoy the talk, hot drinks and cake. Doors open at **10.00am for 10.30am** at Leyburn Arts and Community Centre, Richmond Road, Leyburn DL8 5DL.



KTL JOINERY

PROPERTY REFURBISHMENT and MAINTENANCE

- + Hotel & B&B Maintenance Services
- + Extensions & Property Improvements
- + Kitchen Design & Installation
- + Bathroom Refurbishments
- + All aspects of joinery undertaken

☎ 07801 263793

✉ ktljoinery@outlook.com  [ktl.joinery](https://www.instagram.com/ktl.joinery)

MH
PUB · DINING · HOTEL

Village Pub, Restaurant and Hotel
Located in Askrigg, in the heart of Wensleydale

12 Comfortable En-Suite Bedrooms

Double & Twin Rooms

Pub & Restaurant

Great Food and Drinks

Private Car Park

Beer Garden

Main Street | Askrigg | DL8 3HG
01969 650515 | info@middlehouseaskrigg.co.uk
www.middlehouseaskrigg.co.uk

**Yorkshire Dales National Park
Authority
Appoints New Chief Executive**

The Yorkshire Dales National Park Authority has announced the appointment of James Blake, currently Chief Executive of the Youth Hostel Association (YHA), as its new Chief Executive Officer. James will take up the role later this year following the retirement of the Authority's outgoing CEO David Butterworth.

Penhill Ladies

Our next meeting is on **Wednesday, May 20th** in Carperby Village Institute. It is an open meeting and non members are welcome.

'I May Be Gone A While' is the title of the talk by our guest speaker, Jim Morton, about his 8895 mile walk around the British coast to raise money for the Gurkha Welfare Trust. There is a charge of £5 for non-members. We look forward to seeing you there!



**James Peacock SOLID FUEL
MERCHANT Bainbridge**

Good quality fuels at competitive prices.
Smokeless Fuel, Logs and Sticks all available.
Deliveries in Wensleydale, Swaledale and
Coverdale. No delivery too small.

**James Peacock PRIVATE HIRE
Bainbridge**


4-8 seats, Airport runs, pubs, stations, walking
or cycling holiday, luggage transfers.....

Tel: 01969 650212 / 650465

Email: info@james-peacock.co.uk

Web: www.james-peacock.co.uk

Yoga Fusion
By Janesse



Yoga and Pilates inspired movement
Flow into strength and flexibility

Morning and evening
sessions available in Hawes

yogafusionbyj@gmail.com

**UPPER DALES
HOME CARE**



Home care services are specifically designed to provide assistance with daily living activities in the comfort of an individual's home.

OUR SERVICES

	
	
Help at Home includes: Cleaning Laundry Light Chores Meal Prep	Company & Support: Companionship either in person or by phone
	
	Carers' Break Sitting Services: Support for those caring for loved ones

CONTACT US
01969 667400
or 07817 71227

VISIT OUR WEBSITE
www.udcp.co.uk

**COPY SHOP
PRINTING ~ PAPER
SCANNING & LAMINATING**

Wensleydale Press

Burtersett Road, Hawes 01969 667575
wpress@tiscali.co.uk

Cumbria Stove Centre
Supply and installation of wood,
coal and gas stoves.

- ◆ Flue and chimney lining services.
- ◆ Inglenook specialists.
- ◆ Fully qualified and experienced Hetas engineers

01539 821061 (day) - 01539 625227 (eve)
SHOWROOM: 34a, Main Street, Staveley

MAY WHATS ON LISTING;
please add these dates to your Diary

May

- 1 Dominoes. Carperby Institute. 7.30pm.
- 1 Yoredale Art Club Exhibition opens until May 4th. See p.10.
- 2 Hawes Junction Chapel. 7.00pm. See p.27.
- 2 Blueboxt Spring Lunch. 12.30pm. Thorlby Village Hall. See p.26.
- 2 Concert. Reeth Memorial Hall. 7.30pm. See p.26.
- 2 Nashville Concert. 7.30pm. Tennants Leyburn.
- 3 Hawes Silver Band at 'Songs of Praise.' Hawes Junction Chapel. 2.30pm. See p.29.
- 9 Little White Bus trip to Northallerton. See p.39.
- 9 Birding for Beginners. 10.00am. See p.18.
- 9 Concert at LACC. 7.30pm. See p.30
- 9,10 Model Rail Show. Leeming Bar station. See p.9.
- 13 Charity Bingo. 7.00pm. Hawes Market Hall. See p.17.
- 15 Start of Little White Bus service to Reeth. See p.32.
- 15 Leyburn u3a. AGM and talk. 10.00am. See p.18.
- 16 Charity Ceilidh. Askrigg Village Hall. 6.30pm. See p.27.
- 16 Classical Concert. 7.30pm. St Andrews Church, Aysgarth. See p.22.
- 18 Hawes Amateur Dramatic Society. AGM. 7.00pm. The Fountain, Hawes. See p.25.
- 19 Arts Society Talk. Tennants. 2.00pm. See p.20.
- 20 Friends of the Dales on-line talk. 5.30pm. See p.18.
- 20 Penhill Ladies Meeting. 7.30pm. Carperby Village Institute. See p.19.
- 22 Concert. Reeth Memorial Hall. 7.30pm. See p.26.
- 23-25 Diesel Gala. Leeming Bar Station. See p.9.
- 23 Quiz and Supper Evening. 6.00pm. Scyamore Hall. See p.7.

27 Upper Wensleydale Ladies Luncheon Club AGM Meeting. Street Head Inn. Noon. Last one till September.

28 Little White Bus trip to Barnard Castle. See p.39.

30 Synthian concert. 7.30pm. Hawes Market House. See p.26.

Arts Society Wensleydale

How Great Design Influenced the Railways

From those gorgeous 1930s travel posters, through nationalisation of the railways in 1948, with their bright regional colours, to the creation of the famous BR Double-Arrow symbol in the 1960s... it's surprising how British railways have led the way in terms of design. In the next Arts Society lecture given by Mark Ovenden in May, we plan to reminisce over those beautiful graphics, and the bygone days of railway architecture and travel. We'll pay homage to the wonderful Tube map by Harry Beck and look to the future of train and station design.

Why not get onboard and join us on **Tuesday, May 19th at 2.00pm** at Tennants Auction House, Leyburn. Non-members/guests are always welcome at all Arts Society Wensleydale lectures. A donation of £10 is suggested or why not become a member? For more information on Wensleydale Arts Society, visit <https://theartsociety.org/wensleydale>.

New Registration Scheme for Household Waste Recycling Centres

NYCC are introducing a new registration scheme for household waste recycling centres (HWRCs). This will help us make sure that our HWRCs are only used by North Yorkshire residents who pay for the service through their Council Tax. We have found that around 16% of current HWRC users live outside the county. Restricting usage to residents is expected to generate savings of up to £400,000 per year.

Registering is free and you can do it online in a couple of minutes. You can find out more at <https://www.northyorks.gov.uk/bins-recycling-and-waste/bins-recycling-and-waste/household-waste-recycling-centres> You will need to give us your: name; address; email address or telephone number if you do not have an email address and your vehicle registration. Registration will last for 3 years.



Upper Wensleydale Benefice May 2026

	St Mary & St John's, Hardraw 9.00am	St Margaret's Hawes 10.30am	St Oswald's Askrigg 10.30am	St Matthew's, Stalling Busk 2.30pm
1 May	Sycamore Hall – Communion at 10am			
3 May	The Gathering – Benefice Family Communion St Oswald's Church, Askrigg at 10.30am			
10 May	Morning Prayer	Holy Communion	Café Style	12.30 Soup followed by Communion
17 May	Holy Communion	Family Service	Morning Prayer	
24 May	Morning Prayer	Holy Communion	Holy Communion	Afternoon Prayer Pathfinders and Explorers
31 May		BCP Service at 9.00am	Forest Church at Sycamore Hall 10.30am	

Evening Prayer by telephone is held at **4.00pm** every Sunday except 31 May.. For details see the website www.upperwensleydalechurch.org/services

Rogation Sunday

I hope that you all had a very Happy Easter in between the rain and wind of 'Storm Dave' (what a name!) On Easter Sunday morning a large crowd of us gathered on the beach at Semerwater where once again we were able to join in the joy of an Easter Immersion Baptism in the lake followed by BBQ fish and fresh locally baked bread – a great way to start our celebrations.

For Christians, Easter reminds us of the love and the Hope that can be found in living our lives with a God who is there to be known and there to be experienced. The Christian experience is one of being blessed in order to be a blessing^{Gen.12:2} and on 'Rogation Sunday' (May 10th this year) the Church remembers an ancient practice as she prays for God's blessing on the land and upon all those who work upon it in order to provide us with the food we need.

For many years now the Church in Upper Wensleydale has regularly been praying God's

blessing upon our communities, businesses, schools, shops and yes: upon our farmers and the land and the livestock that they care for.

In the middle ages it was a common practice for the villages to 'beat the bounds' in mid spring. This involved the parishioners walking the boundaries of their communities whilst being led in prayer for God's blessing on a successful harvest. The words from the 1662 prayer book include the following: 'Merciful Father we beseech thee to continue thy loving-kindness unto us, that our land may yield us her fruits of increase, to thy glory and our comfort.'

I constantly marvel at the skill and determination with which our farmers work in all weathers on our behalf. As we enjoy new life leaping and bouncing across our landscape in this lambing season, perhaps I might encourage you to pray a blessing on their wellbeing or to consider with gratitude all that they do in order that we might not go hungry. 'The Lord bless you and keep you'.^{Num.6:24}



Wensleydale Concert Series 2026

We are pleased to be presenting our eleventh series of six concerts beginning on **Saturday, May 16th at 7.30pm** in St. Andrew's Church, Aysgarth. The concert includes music for clarinet and piano performed by Emily Worthington, a world leading specialist in early clarinet music, together with pianist Daniel Grimwood, a popular regular friend of our series.



The concert will give a taste of musical society from 19th century Bavaria entitled 'At home with the Baermanns' and features music and arrangements by the clarinetist Carl Baermann and his close circle of friends including Schubert, Weber, Schumann, Liszt and Brahms as well as piano works by Moscheles, Mendelssohn and Thalberg. This concert is presented in partnership with the Swaledale Festival.

Our series continues from **June 20th** with five more concerts including two piano recitals, a french horn and piano recital, a cello and piano recital and an early music concert of lutes and viols. All concerts are at St Andrew's Church, Aysgarth, apart from the concert on **July 4th** which will be in Carperby Village Hall.

Full details and tickets are available via our website www.wensleydaleconcertseries.co.uk - please do check the website for details of parking and access before travelling. Tickets can be purchased online via our ticket agent or by calling **0333 6663366** and quoting the concert date and Wensleydale Concert Series.

You can also order by post using our booking form (and pay by cheque or by BACS which avoids paying fees!). There are season tickets available for £72, a saving of £48 over individual tickets. Tickets bought in advance are £18 (£20 at the door cash only please) and £1 for full time students.

Printed programmes will be available for £1.50 at the door for most concerts. If you have any questions please contact **Carol Haynes** on **07891 371280**.

THE HEALING COLLECTIVE

Encouraging health and well being
with a range of therapies.

Therapies for animals also available.

Coach House, Berry's Farm Shop & Café,
Swinithwaite, DL8 4UH. t.0845 474 2383

info@healingcollective.co.uk
www.healingcollective.co.uk



MICHAEL MOORE and SON BUILDER AND PLASTERER Family Business Est 1906

Alterations, pointing, stonework,
Roof work, garden patios, paths,
plastering, insulated plaster
boarding,
Over-skimming Artex walls and
ceilings, tiling walls and floors,
underfloor heating, PVC sash
windows.

Tel: 01969 667045
Mob: 07968 684942

Hawes DL8 3NS

H & M

CRAFTSMEN
Ingleton | Est. 1987

KITCHENS · BEDROOMS · STUDIES

High Quality, Bespoke Furniture With
Full Design And Fitting Service



Showroom: Ingleton Industrial Estate, LA6 3NU
015242 41535 · kitchensandbedrooms.co.uk

Heavens Above

Apart from a few problems with a frozen loo, last month's Artemis Moon mission was a great success – the images the crew captured of the far side of the lunar surface and the Earth were really spectacular. An expensive way to 'spend a penny' though, when you consider the toilet cost \$23 million to design and build. By coincidence the four crew members landed safely just two days before the 65th anniversary of the very first human space flight by the Russian cosmonaut, Yuri Gagarin, on April 12th, 1961.

You'll probably find our lunar neighbour back in the news again this month as we've two full Moons coming up, one on **May 1st**, the other - a so-called Blue Moon - on **May 31st**. Normally we only have just one full Moon each month but because the phases of the Moon take 29 and a half days to complete their cycle compared to the 30/31 days in most calendar months, every two to three years we end up with an extra full Moon. A bit like the extra day added to a leap year. In any event the Moon definitely won't look blue on **May 31st**. It might look slightly

dimmer than usual, though, as it's at its furthest distance from us in its orbit when it becomes full making it a micromoon - the smallest full Moon of the year.

The two brightest planets, Venus and Jupiter, continue to dominate the evening sky this month. You'll find them over in the west soon after sunset. They'll slowly approach each other during the coming weeks as they head towards a striking planetary conjunction on **June 9th** when they'll appear to be only 1.5 degrees apart. From **May 20th** onwards you should also be able to spot the innermost planet, Mercury, to the lower right of Venus. By the end of the month it will have brightened to magnitude 1.5 and won't set until **11.00pm**. Mars, and the two outer planets, Uranus and Neptune are too close to the Sun to be visible this month but if you're a really early riser you might just catch the ringed-planet, Saturn, in the pre-dawn sky. It rises in the east around **3.00am** by the middle of May. Have clear skies!

Al Bireo



Wensleydale Craft Fairs

Quality crafts by local and regional makers

at the Market House, Hawes

2 - 4 May

16-17 May

23-25 May

www.wensleyfairs.co.uk

Tel: 07857 439450

AYSGARTH

FALLS

HOTEL



Now serving Afternoon Tea by advanced booking
Wednesday - Saturday 12pm - 4pm



Food served daily from 12pm

www.aysgarthfallsotel.com
01969 663775



A personal friendly service for
'all creatures great and small'

- Small animal consultations, diagnostics, and surgery
- Budget friendly preventative health care plans for dogs, cats, and horses
- Farm Animal routine work
- Ambulatory equine services
- In-house 24-hour emergency service for small animal, farm, and equine

01969 422201

www.wensleydale-vets.com
info@wensleydale-vets.com



Orthopaedic Massage

Joint & muscle pain; sports injuries
Degenerative conditions, persistent pain
Time to talk through your symptoms
Help to understand triggers
Clear guidance & rehab

Clinic in Hawes & Burterset

07975 999373

Find me on Facebook

Border Patrol

I'm not one for exaggeration, never in a million years would I be guilty of that – anyway this is a true story. Last autumn I was hurtling along at pensioner speed down the Roman road and noticed a huge flock of birds gathering on the fading meadowsweet, to feast on the developing seed heads. "Must be starlings" I muttered - from afar and going by that number I was convinced, but on approaching was amazed to identify them as goldfinches. Well over a hundred there were, just ahead of me as I made my way down, what a sight. Apparently, a small group of goldfinches is known as a 'charm', however there were far too many for that to suit so I thought how about an 'infestation'...no, too ugly and reproachful, maybe an 'annual convention' of goldfinches, hmm, a bit corporate and long winded, but it's the best I could do. This was when the seed of an idea was sown, to germinate and eventually take root as I surveyed my least favourite part of the garden...let me explain.

Hispanic bluebells and garden mint – I couldn't sit down and plot out a more rankly overpowering combination and yet there they were, already sprouting up and threatening a garden takeover. The mint was my own daft culinary introduction but I've no idea how the bluebells appeared – anyway, total excavation was necessary, a complete clearance before any thought of replanting.

I'll never totally eradicate at the first attempt – those little green shoots will make an appearance throughout summer, but I'll conscientiously dig them out as they appear. Useful tip – when starting on any tough job I always summon up a major irritant as a stimulant to get me started; paying £9.20 on Northallerton high street for two bog standard coffees was a clincher, a boiling over frustration useful when channelled into an attack on the projected border. I went at it with an astonishing level of brutality, roots and bulbs heading skywards, totally unsustainable and eventually had to slow down, develop a method, a comfortable rhythm, otherwise it would be hello A&E.

The soil was shaded, heavy and took all morning to dig over, so a double tonic lunch break couldn't come soon enough, a cuppa with a drop of honey in, ahh, the 'Red Bull' for us oldies - watch out garden, here I come. With

memories of overpriced coffees fading fast, I approached the fun planting part, sifting through the possibilities for a damp, gloomy site with gluey soil; how about rooted, spotted laurel cuttings, hmm, dull, dull, dull, with no floral display to talk of; next up, a vision of a wall of 'Winter Flame' dogwoods sprang to mind - with a shudder that was banished, more about that later. I also had five pots of moth eaten 'Elizabeth' chrysanthemums failing to get me all a tingle; dismissing these also rans and with goldfinch recollections, I settled on the purple meadowsweet, *Filipendula purpurea*. At a stately four feet and with masses of pinky violet flowers in summer, that would guarantee quite an exhibition. Being a stranger to moderation, I went for overkill, planting five clumps to completely fill out the border and create an enormous bank of colour, purposely not including any other fussy colours to detract from the show, apart from a thin band of poached egg plants down at the front, just where the sun catches.

Rousing stuff. However, let me temper all the positivity and eat a giant slice of humble pie by touching on that aforementioned dogwood, 'Winter Flame'. Several articles back I was raving about it, but have since noticed with alarm that it soon starts to misbehave by suckering all over, sprouting 10 to 15 feet away from the parent plant and swiftly gatecrashing that precious border – apologies for that, I would stay well clear.

Back to our meadowsweets and the preferred 'purpurea'. At the end of the season, I will cut down to ground level and mulch with some hopefully amazingly rich compost. The wild species die back naturally, all the while providing goldfinch fodder – we'll be grateful if a couple of dowdy house sparrows show up, although they prefer the peanuts which are great value – three large bagfuls for the price of two dodgy Northallerton coffees.

Ed Gardener

Steve Ward

Decorating and Woodwork

Mobile 07964 931461

Email :- stevenwardwensleydale
@gmail.com

Hawes Amateur Dramatic Society Update

Could you be our lucky winner? We are still trying to track down the holder of Lucky Programme No. 154 from our last souvenir programme draw. If you have it, Suzanne has your prize waiting for you. The winning programme was most likely sold at the Friday evening or Saturday matinee performance. Please contact **Suzanne on 07896 896501** if you think it might be yours.

Although pantomime season may feel a long way off, preparations are already underway for our next production. Our Annual General

Meeting will take place on **Monday, May 18th at 7.00pm** at The Fountain, Hawes, and everyone is welcome to attend.

We are always keen to welcome new members, from juniors upwards, whether you'd like to be part of the cast, front of house or help behind the scenes with the crew. Our productions can only continue thanks to the support of the local community, so if you'd like to get involved or find out more, please call Suzanne on the number above. We look forward to seeing both familiar faces and new ones on **May 18th.**

SANDERSON & CO.

"Decorating Supplies"

**DULUX COLOUR
ADVICE CENTRE**

Scanner Colour
Matching & Paint Mixing



Stockist of Leading Brands including,
*Dulux, Crown, Leyland,
Ronseal, Cuprinol*

Extensive Wallpaper Pattern Library
Trade & Quantity Discounts Available

High Street, Leyburn DL8 5AQ
01969 623143

Email: sandersonandcoleyburn@gmail.com

Also **CALOR & Camping Gaz** stockist

Mobile heaters and accessories

Free local delivery



EDGLEY GARAGE



Edgley Garage, Aysgarth,
Leyburn, North Yorkshire,
DL8 3AD

07939 881858

edgleygarage@yahoo.com

MOT testing; Full servicing;

Air conditioning service;

Brakes, clutches and all

general repairs to vehicles.

The Moorcock

Garsdale Head

Our licensed Tea Room is open
daily (according to season) from
11.00am to 5.00pm.

We serve light meals, snacks, tea
and coffee and a range of beers and
spirits. Bed and Breakfast facilities
are also available.

Tel 07960 930047

www.the-moorcock.co.uk
Email: Themoorcock@outlook.com



Edie Peacock

Hairdressing

At the Parlour

Call: 07817 312906

Bainbridge Vets Ltd

A comprehensive, friendly veterinary
service treating animals large and small
24 hour emergency service.

Open Surgery

Monday-Friday 9.00-9.30am and 2.00- 2.30pm

Saturday morning 9.00-9.30am

(appointments available at other times)

01969 650263

Market House Fundraiser

The Market House are running a fundraiser on **Saturday, May 30th**.

We have the fabulous Synthian playing. They are an electro80's synth pop duo, delivering iconic songs, a packed dance floor and a full visual show. Come along and dance to the old favourites by Erasure, Depeche Mode, Ultravox, Gary Numan and many more.

Tickets are £15 and can be bought from Laura at Hawes Community Office or by email - markethousehawes@gmail.com. Doors open at **7.30pm** - the band are on stage from **8.00pm** and will be performing two sets.

Over 18's only with a cash bar on the night (please note only alcohol purchased on site can be consumed). This is going to be a fab night, so don't miss out. Get your tickets now!



HANDY IN HAWES

HOME & GARDEN
REPAIRS & MAINTENANCE
FLAT PACK ASSEMBLY
NEW PROJECTS

DAMIAN : 07421 768511
dlake65@outlook.com

Friends of BlueBoxt invite you to a

Spring Lunch

At Thoraby Village Hall
DL8 3SU

On Saturday 2nd May 2026
12.30pm for 1.00pm

Two-course lunch
(Welcome drink, main and dessert, Tea and Coffee)

Entertainment by Vocalists
Colin Bailey and Gail Barlow

Tickets £15
Limited places - early reservation advisable

Book your place at

www.wensleydale.org

Tickets available from:
Ray Wilkinson, Eve Peacock or
Colin Bailey
info@Wensleydale.org
01969 748810



Proceeds in Aid of BlueBoxt Creative and Performing Arts
Registered Charity 1109194



Reeth Memorial Hall Concerts

Saturday, May 2nd – The Bar-Steward Sons of Val Doonican:

Bar-Stewardised parody versions of well-known songs on folk instruments with new satirical comedy lyrics, by a band known for their stylish choice of sexy knitwear and no-holds-barred, anarchic live shows. Tickets £20 (£22 door).

Friday, May 22nd – Over the Moon

A wild ride from 40's sounding western swing and Appalachian old-time, to cowboy blues. Simple and sweet, all their material has a common thread that speaks of the Canadian west. A special concert when they last played here in 2024.

Tickets £16 (£18 door).

Saturday, June 27th – Dixon County

An all-live and kicking country band with not a backing track in sight, performing a broad mix of country songs spanning the decades and guaranteed to get you dancing.

Tickets £14 (£16 door).

Tickets for concerts are available from Reeth PO or phone **Glen Steward 01748 884989** or visit www.reethmemorialhall.weebly.com. Tickets are half price for under 16s. All concerts start at **8.00pm** – doors open **7.30pm**.

White Rose Candles, Wensley

Hand made quality candles and wax melts.
Church candles and bespoke orders for weddings etc welcome.

Tel: **01969 623544** or e mail
whiterosecandles@btinternet.com
Website www.whiterosecandles.com

J. W. COCKETT and SON

Family Butchers
Estd. 1854

Wholesale and Retail Bakers
Main Street, Hawes
Tel 01969 667251

Best Quality Meats
High Class Baking
Freezer Orders Supplied

Hawes Junction Chapel

Mount Zion, Garsdale Head, LA10 5PT

2026 is the 150th Anniversary of the Chapel. The foundation stone was laid on May 1st 1876. —the same day as the first passenger service on the Settle/Carlisle began. It is believed that the building was the only place of worship built by the railway company.

Saturday May 2nd at 7.00pm

Andy shares past memories and photographs of Hawes Junction and Lunds.

Sunday May 3rd at 2.30pm

Anniversary of stone Laying with Rev, Richard Teal and the Hawes Silver Band.

Light refreshments will be served at the close of both events.

Charity Ceilidh

Askrigg Village Hall
Saturday, May 16th. Doors 6.30pm
Tickets £10 adults, £5 children.
Family 2+2 = £25

We have QR code and the telephone no for tickets is
07398 329669



JB TV AERIAL & SATELLITE SERVICES



John Banks
Proprietor

Telephone: 07891 944175
Email: johnbankshawes@gmail.com



PIANO TUNER

PAUL CRAY M.P.T.A
Tel: 07798 525846



Reawaken your passion for music
paulcray.pianotuner@gmail.com

DALESPLAY

We had a fun filled Easter holiday at Dalesplay with the children. Lots of the school-aged



children joined us in our holiday club to enjoy Easter baking, visits from the lambs and the Easter bunny dropped by to play. We had Easter egg hunts, egg rolling and a visit from Zoolab with lots of different animals.

We joined Hawes primary school for an Easter service at Hawes St Margaret's Church. Despite the damp weather we enjoyed our walk through the town and joining in the service. Thank you Hawes Primary school, Rev Dave and Sarah for inviting us.

The children in the Sunshine's room have been making worm farms, helping to recycle around the setting and the children have taken on the roles of light supervisor and tap supervisor very seriously to ensure we save energy and water to help the environment. The role play area has turned into a construction site. The children have been exploring different materials to build with, designing what they want to build using their fabulous imaginations and working well as a team.

The Ducklings room have enjoyed exploring lots of sensory play and their role play area has transformed into a house. They have been cooking in the toy kitchen, talking on the phone, using the toy Hoover and dust pan and brush to clean up and pretending to ride on a bus.

Dalesplay and Hawes Primary School have been planning together for those children moving up in September to ensure the children have a smooth transition and their learning is consistent.

With summer fast approaching we strongly advise those wanting children booked in to get in touch now to book your place. We are busy and we don't want to disappoint anyone. We are also taking bookings now for places in September for funded and paid sessions. We care for children from three months up to 12 years. Please note we have a new email address, please send all enquiries to admin@dalesplay.co.uk.

Notes From Thorney Mire

Spring

In this troubled world of ours, it is reassuring to know that at least one thing is constant. That is, Spring will come. It may be late, it may be cold, but it will arrive. It teases, one day it can be sunny with some warmth, when thoughts turn to outdoor activities, but two days later there could be snow on the ground, and thoughts turn to sitting by the fire!

Whatever the weather, signs of Spring begin to appear on the verges. Leaves of the dog's mercury with its insignificant flowers can be seen. Cheerful celandines flower, making small bright splashes of yellow amongst the dead grasses. Coltsfoot are few and far between. I only found three this year, but the wild primroses never fail. You have to know where to look for them as they keep themselves to themselves. They are partially hidden by the wall, beneath the trees and their flowers are not very large. They never seem to spread, but they are always there, heralding Spring.

On one of the rare, warm and sunny days we had in late February, when I stepped outside I heard the call of a curlew. It wasn't the full cry, but enough to let you know that Spring was on the way. Later that same day when driving down the dale, a flock of about twenty to thirty lapwings were circling in a field to our left. In one body they flew across the road and circled above the opposite field.

For the third year running, lapwings have not returned to the fields along our lane, but they are not too far away. They come each year to the fields bordering Bands Lane which is only about one mile from Thorney Mire. When walking along Bands Lane recently, I was treated to an aerial display by curlews and lapwings, swooping and diving and calling with their distinctive cries. It was lovely to watch the return of these birds to their moorland breeding grounds.

The people in Hawes have also enjoyed, on several evenings, a murmuration of starlings. I was lucky to see this spectacle. The term murmuration comes from the sound their wings make when flying. It is thought that the birds flock together like this because there is safety in numbers and it makes it more difficult for a predator to target one particular bird. Starlings can change direction in a split second and each

bird reacts rapidly to its nearest neighbours, therefore making changing patterns and a synchronised effect.

I have seen a red squirrel on a couple of occasions, one on the same day when I heard the first curlew. It was climbing up the trunk of the ash tree and a few days later, one with a distinctive white tip to its tail, was scampering along the barn roof. The hare we see occasionally is still around as I saw it run across the field, along the lane then down the track by the barn.

I have some sad news. In my last article I mentioned that two collared doves had visited the garden for several years. Only one had returned, but was later joined by a second dove. I hoped they would pair up. They did and started to nest build. Imagine my dismay when one morning I saw a pile of feathers which looked as though they belonged to a collared dove on the road by our gate. These feather stretched for about four yards along the road, terminating under a tree on the verge. There was no sign of a bird either dead or alive, but this poor unfortunate dove must have been dragged along the road. After that incident neither of the birds were seen again. Until that is, yesterday when a single collared dove flew over the courtyard. I live in hope.

It's that time of year when normally solitary birds are seen together. Two nuthatch will appear at the feeders, two robins tolerate each other and three dunnocks decide to have a battle. I rather suspect that it was two males and one female. The goldfinches are nesting in the large cypress tree. They can be aggressive birds. I watched four goldfinches in aerial combat. One landed on the floor in the submissive position while a second one trampled and jumped on it. I was amazed that it got up again, but it did and joined the others to continue fighting. A

D MOORE & M BLACKHURST

BUILDERS  **GENERAL MAINTENANCE**

*All types of building work undertaken
25 years' experience ~ Free Estimates*

07772 284602 ~ 07975 897715

3 Woodburn, Hawes. 01969 667505

blackbird is nesting either in the front garden or nearby as it gives me a good telling off every time I step outside. We have had a siskin and the long tailed tits no longer come in groups, just a solitary one. In my last article I asked where have all the chaffinches gone? We had only got one, but since then several more have found us.

I was watching the rooks and jackdaws flying across the field towards the top wood carrying nesting material in their beaks. Each species of bird seems to be pre-programmed to build a nest to a certain design, so that when we find an abandoned nest we know which bird has built it. To build such constructions using only their beaks seems nothing short of a miracle. Especially when you think that we humans have trouble assembling with two hands anything that arrives flat packed, even when it comes with pictorial instructions.

Sylvia Turner



Hawes Silver Band

The band plays at the Songs of Praise service at Hawes Junction Chapel at **2.30pm** on **Sunday, May 3rd**.

The band plays for local events and celebrations and enquiries are welcome, see hawessilverband.org.uk. New players with any level of skill on a brass instrument are welcome at our regular practice sessions, **7.30pm** at the Market House, Hawes most Sunday evenings. We can also help complete beginners to maintain the great tradition of brass banding in the Dales. Instruments can be loaned. Contact Sue Woof at bandswoof@gmail.com.



Sycamore Country Store

Now Open Inside Sycamore Hall

OPENING HOURS:

MONDAY TO FRIDAY. 9.00 am to 1.00 pm

Selling a wide range of everyday essentials, including dairy products, fruit & veg, bread, cakes & savouries, sandwiches and sweets

HAWES POST OFFICE in the Community Office

OPENING TIMES:

9.00am to 5.00pm Monday to Friday

9.00am to noon on Saturday

Phone number: 01969 667201

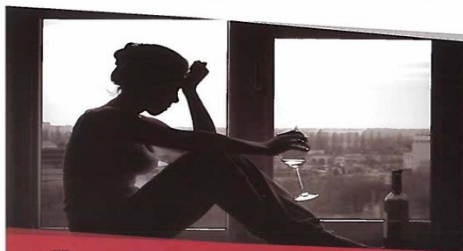
BAINBRIDGE POST OFFICE

Post Office open at Bainbridge in Sycamore Hall 9.00am to 11.00am
Mondays and Wednesdays

ASKRIGG POST OFFICE

In Sykes House, Noon to 2.00pm
Mondays and Wednesdays

IS ALCOHOL COSTING YOU MORE THAN MONEY?



Alcoholics Anonymous

0800 917 7650

www.alcoholics-anonymous.org.uk

Email: help@aamail.org

SCAN HERE FOR LOCAL MEETINGS



ALL ENQUIRIES ARE TREATED IN THE STRICTEST CONFIDENCE

WENSLEYDALE TREE and HORTICULTURAL SERVICES (Est. 1995)

DAVID ALLEN (HND Arboriculture)

CHARLIE ALLEN (BSc Arboriculture)

Fully insured (£5million) professional tree work:
felling, crown thinning etc.

Petrol log splitter and woodchipper for hire.

Tree stump removal.

Hedge establishment and maintenance.

Supply/ planting of forest/ ornamental trees.

Fruit tree maintenance. Weed control services.

treesinhawes@gmail.com

01969 667364 or 07811 576108



Blueboxt May Update

Fund Raising Events in May

Spring Lunch – **Saturday, May 2nd, 12.30pm for 1.00pm** at Thorlby Village Hall. Entertainment by vocalists Gail Barlow and Colin Bailey. Tickets are £15 each which includes a welcome drink and a two course meal with Tea and Coffee.

Live Music with The 684s on **Saturday, May 9th, 7.30pm** at Leyburn Arts and Community Centre. Local live 7-piece band takes you on a nostalgic journey, celebrating the best of Laurel Canyon Americana. Expect hits and hidden gems from artists such as Carole King, The Byrds, James Taylor, Joni Mitchell, Mamas and Papas, Crosby, Stills and Nash, Zappa and many more!

Coffee Morning at Leyburn Methodist Church Hall – **Friday, May 22nd, from 9.30am**. Pop along and enjoy a cuppa and a chat. There will also be a Cake Stall and Raffle.

Regular Activities:

Raising Creative Aspirations - We are continuing to welcome applications from young people aged 16 to 26 years who are interested in working in the Creative Industries Sector. Supported by Youth Music and using public funding by the National Lottery through Arts Council England, we will be able to support 20 young people with coaching and business advice and three paid Freelance Creative placements designed to build careers in the music and creative industries. See website for more details or contact us to find out more.

Get Musical Jam Band - What a great four sessions before the Easter break. New sessions are running on **Wednesdays 4.00pm – 5.30pm** at Leyburn Scout and Guide Hall. If you play an instrument and would like to gain experience of

being in a band with other young people, this session is for you. Contact us to find out more.

Light My Choir! – Our mixed voice community choir is welcoming new members (16 years and over). No prior experience required - come and meet our fun and friendly group and give it a try. We meet on **Monday evenings 7.00pm – 9.00pm** at Leyburn Methodist Church Hall. Contact us to find out more.

To find out more or book places for our events and activities visit www.wensleydale.org or contact **Colin Bailey** on: **01969 745810/07711 211169** or email: info@wensleydale.org.

CHAPEL GALLERY

Work from local artists and crafters. Bespoke Workshops available. Coffee and cakes. Dogs and children welcome.

Open daily (except Sundays)
11am to 4pm

Burtersett Road, Hawes, DL8 3NP

Tel: 07474 138536

info@chapelgalleryhawes.com

www.chapelgalleryhawes.com



Robin Jessop

Free Market Appraisals

For Selling & Letting Rural Property.

Specialists in Selling by Auction.

Market Valuations for Tax Planning, Lending, Compensation and Council Tax purposes

Marwood House, Railway Street, Leyburn

Tel: 622800

Sykes House in Askrigg Grocery Shop and B&B Shop Open 7 days a week

Enquire for
B&B bookings at
www.sykeshouse.co.uk
01969 650535

Wensleydale School Recognised for Support of Young Carers

Wensleydale School in Leyburn has been awarded the Schools Carers Charter Bronze Award by Carers Plus Yorkshire, recognising its commitment to supporting students who have caring responsibilities at home. The award highlights the school's work in both supporting known young carers and developing proactive ways to identify and help others who may not yet have come forward.

At present, the school has identified nine students as young carers, with a further group of around 20 who may also have caring responsibilities and will be offered additional support. Young carers often face significant challenges alongside their education, including emotional pressures, disrupted routines at home, interrupted sleep, reduced time for schoolwork, and less opportunity to socialise with friends.

Practical support in school

To achieve the award, Wensleydale has introduced a range of initiatives, including appointing a dedicated Young Carers Champion, Mrs McDougall, who has received specialist training. The school has also worked closely with Carers Plus Yorkshire to raise awareness through assemblies, provide information for students, and strengthen staff understanding of how best to support young carers. Further support is continuing to develop, with group sessions and a lunchtime hub planned to give young carers opportunities for peer support and a space to talk openly about their experiences. The school works closely with families and external organisations to ensure students receive the help they need, both in and out of school, with regular check-ins in place for those who require additional support.

Recognition and next steps

Richard Lundie, Assistant Headteacher, says, "We are very happy to be the first secondary school in Hambleton and Richmondshire to gain this recognition. It is all part of what we do at Wensleydale to try and support students, whatever their needs, so they can be successful and happy at school." Nationally, it is estimated that around one million young people under the age of 18 have caring responsibilities, which can have a significant impact on their wellbeing and education.

Wensleydale School is now working towards

the **Silver Award**, with further initiatives already underway, including a young carers pass for students, awareness sessions, and expanded support provision. Parents who believe their child may be a young carer are encouraged to contact Richard Lundie, at the school for further information and support.

Bainbridge Womens' Institute

April has seen us out and about as usual. The Garden Club ladies visited the garden of one of our members which involved a bit of shower dodging! They enjoyed retreating inside for refreshments during the wet spells! They have also been to visit Braithwaite's Garden Centre to treat themselves to some new plants for their own gardens.

The speaker for our April meeting was unfortunately unable to come along so instead we made our own entertainment with a scavenging hunt around the village and a quiz for those unable to venture out. We had great fun and enjoyed the opportunity to chat with friends.

We have just held our annual Community Lunch for the more 'mature' members of our community. Around 60 residents from the Parish came along to enjoy a delicious home-cooked lunch, prepared and served by our members. There was a lovely atmosphere and everyone had a great time. Huge thanks to those of our members who were able to assist with this special event. It is a lovely opportunity to be able to give back to our community.

Our May meeting will take place at Bainbridge Village Hall on **Thursday, May 21st from 7.30pm** when David Banks is coming along to talk to us about the 'Origins of Yorkshire'. This should be really interesting so do think about coming along. This is an Open Meeting so we will be pleased to welcome along anyone who is interested as well as those considering joining us.

If you are interested in joining our busy and friendly group you will be very welcome to come along to any of our monthly meetings and see what we get up to. There is no commitment to join on the day, so give us a try! A new membership year has just started so it is a good time to join and get full value from your membership. You can get further details from our President, **Sue Stokes on 07816-955-723**.

DENTURE PROBLEMS?



Are you unhappy with the look or fit of your existing dentures?

WE CAN HELP

Our in-house Clinical Dental Technician Mark can provide quality bespoke dentures designed to your individual needs



To Book
FREE
Consultation CALL
01677 422968

Website: www.orcharddentallab.co.uk
Email: info@orcharddentallab.co.uk
1 The Villas, Bridge Street, Bedale, DL8 2AB

New Summer Bus Link Between Hawes and Reeth

A new Friday summer bus service linking Hawes, Tan Hill, Arkengarthdale and Reeth will run on selected dates from **May 15th to September 25th**. Operated by Little White Bus, the new "Dale Jumper" service will provide a direct cross-Dales link for both residents and visitors, connecting communities in Wensleydale, Swaledale and Arkengarthdale, along one of the Upper Dales most scenic routes. Stops will include the Buttertubs, Thwaite, Keld, Tan Hill, Whaw, CB Inn, Langthwaite and Reeth.

The service will run on **May 15th, 22nd and 29th; June 26th; July 3rd, 10th, 17th, 24th and 31st; August 7th, 14th, 21st and 28th and September 4th, 11th, 18th and 25th**. There will be no service in early June because of roadworks.

Buses will leave Hawes at **9.00am and 1.00pm**, arriving in Reeth at **10.30am and 2.30pm**. Return journeys will leave Reeth at **10.45am and 2.45pm**.

The new route is expected to be a useful link for local people travelling between the Dales, while also offering visitors, walkers and day-trippers the chance to enjoy a spectacular journey through the Yorkshire Dales without the car. Concessionary bus passes will not be valid on this service. More information can be found on the Little White Bus Facebook Page and at all local pubs on the route!



Home Run

Pet sitting, House sitting, Dog walking

I offer a friendly, personalised pet and house sitting service in Wensleydale and further afield.

Nicola – 07866 336924
nicola@homerundogsitting.co.uk
www.homerundogsitting.co.uk



- City & Guilds qualified
- Fully insured ● Certificates issued
- Prompt professional service
- NO MESS - NO FUSS!

Martin Tradewell
QUALIFIED CHIMNEY SWEEP
01969 640099

5, The Row, Horsehouse, Leyburn. DL8 4TT
Email: martin@daleschimneysweep.co.uk



Swan Farm, Redmire,
Leyburn DL8 4HA
01969 625647
castletimberbuildings@mail.com
castletimberbuildings.com

All of our products are hand made to order, from the smallest of sheds to the more elaborate designed summer houses. Our team of experienced joiners and specialists are on hand to advise and guide you, to help get the most of your product.

We aim to deliver the highest quality buildings, tailor-made to your requirements using only the finest quality timber and ethically sourced. You can be reassured that we also care for the environment.

Middleham and the Dales Local History Group

Wednesday, May 20th, 2.00pm
at Leyburn Arts and Community Centre

Sir James Falshaw: grandson of Coverdale,
engineer and Lord Provost of Edinburgh
by Val Slater

In this talk we hear about James Falshaw's background, education and exceptional career in railway construction in England and Scotland. He was invited into local politics and became one of Edinburgh's most prominent citizens.

Known as a man of firm purpose, James was rather brusque in business but generous and supportive to his extended family and friends. Will you agree with Val's conclusion that he was 'one of the good guys'?

Since returning to her native North Yorkshire twelve years ago, Val has pursued her passion for family and social history. Her mother's ancestors, Falshaws amongst them, lived in Coverdale for many generations.

Members, new members and visitors are always welcome, annual membership is £12 for nine meetings and visitors can attend for £3 per meeting. For more information contact **Tony Keates** 01969 640436, dotandtonyk@btinternet.com.

EFFICIENT HEAT

OIL BOILERS SERVICED
AND REPAIRED

Contact Nick
07729 105466 / 01969 667847

Music Tuition for all ages with
www.colinbaileymusic.co.uk
07711 211169

Drums & Percussion; Vocals;
Piano & Keyboards; Music Theory;
'Get Musical' Workshops.

GS PAT TESTING

HOLIDAY LETS
LANDLORDS
SMALL BUSINESS

FULLY INSURED

☎ 07984214960

✉ gspattesting@gmail.com



TOM ADDISON

FINE FURNITURE

Fine quality furniture handcrafted in the heart of
Wensleydale.

Free standing and fitted furniture designed &
handmade to your requirements.



All enquiries welcome: 07585952951



tom@tafinefurniture.co.uk www.tafinefurniture.co.uk



M Fothergill

Building Services

All aspects of building work undertaken

667936 /

07966 624649

Hawes DL8 3RP

Plastering Alterations Extensions
Roof work General Maintenance



Yorkshire Dales Accountancy
Chartered Accountants

taxation & business advisors

We provide a broad range of accountancy
and taxation services to our clients.
Please feel free to contact Martin or Hazel.

E-mail:

info@yorkshiredalesaccountancy.co.uk

Telephone: 01969 678128

Website:

www.yorkshiredalesaccountancy.co.uk

Three Masterpieces, Two Virtuosos, and a Twist!

Music is all about making musical connections, and this year's Swaledale Festival is rich in it. The **3.30pm concert on May 31st** in St Mary's Richmond brings together two daring and enterprising English violinists. For North Yorkshire's own Richmond Chamber Orchestra to share the stage with them is a thrilling connection, especially playing Bach's Concerto for Two Violins, Grieg's 'Holberg Suite', and Vivaldi's 'Four Seasons' in Max Richter's brilliant recomposition.

The most important connections of all are between the two musicians. Despite Fenella Humphreys and Philippa Mo never having



played together before, they are kindred spirits with many things in common. Both love Bach's music, and both love to make unexpected connections. Philippa's festival recital of Bach and young American composer Missy Mazzoli for instance; Fenella's CDs 'Prism' and 'Bach to the Future' both create fascinating links between old and new. They both perform in surprising venues: Philippa in the Clock Tower of St Pancras and Raffles Old War Office in Whitehall; Fenella in Kettle's Yard, Cambridge and the Omnibus Theatre in Clapham. Both champion new music; both have played in the Dales, Philippa in the festival and as founding director of the Richmond Chamber Orchestra, Fenella in Aysgarth Church last year. Both make a sound to die for and have astonishing techniques.

Now for connections and Vivaldi's 'Four Seasons'. Composer Max Richter fell in love with it aged six. "It was one of the few classical records my parents owned. I would line the needle up, wait for the crackle, and sit back as the music flowed magically into the room.

Wonderful melodies, drama, stories and atmosphere." But the magic wore off: Vivaldi became *the* music for TV adverts, jingles, musak for supermarkets and airports. Fenella Humphreys says, "I never learnt them as a kid and avoided them for years, partly because I'd become so accustomed to hearing them in the background that I didn't realise how brilliant they really are." Richter launched a "salvage mission", and his 'Four Seasons Recomposed' is the result. Some people called it dumbing down: others called it 'subtle', 'magical', 'fascinating'. "There's something extremely liberating about throwing yourself into this new world", says Fenella. Richter stays loyal to Vivaldi's harmonies and melodies, but there are subtle changes, the odd 'new' tune as well. Richter achieved what he wanted: to refresh Vivaldi's masterpiece, and send you back to check: is that the original or not? And ironically it has replaced the original as the much used music for films, adverts, musak etc: the salvage mission has succeeded. By the way, Bach and Grieg recomposed their pieces in the programme, and Vivaldi himself used 'Spring' from the 'Four Seasons' in one of his operas. They're all at it!

Tickets from www.swalefest.org.

A. M.

SYNTHIAN
Performing full-throttle live 80s anthems
Depeche Mode, Duran Duran, Erasure, OMD, Ultravox,
A-ha, Human League & more!
MARKET HOUSE FUNDRAISER
Market Pl, Hawes, DL8 3QX
Saturday 30th May 2026
Tickets £15

BAWB Schools News

This month we are featuring an article written by two of our Year 6 children, Alex and Florence.

Vicky Collins, Executive Headteacher

Fabulous life in the classrooms By Florence and Alex

We have been doing some very exciting things lately. From equations in maths, to population in geography, to Jesus in RE and to a healthy lifestyle in science.

In English, we have been learning about different fairy tales, and we have also written some amazing fairy tales ourselves. Some techniques we have used are dialogue, archaic conjunctions (for, yet nor), hyphenated words, rule of three and ellipsis (...). We all really enjoyed this!

Now we have started learning about persuasive texts for children's rights. So far in table groups, we have looked at the 45 children's rights and picked the most important nine of our choice. We then put them on a diamond nine with the top one the most important right of our choice at the top and the least important at the bottom. After that we put them on a poster from the order of our diamond nine with the title of the right and why it is important with a bit of colour and stuck them in our English books.

We have also been enjoying science, maths, history and so many more fun subjects to test our brains on. In the Year 6 classroom, we

have been learning about how people get to go on banknotes in history.

In science we have been learning about healthy bodies and minds and in DT the Year 6 children have made and evaluated playgrounds out of: lollypop sticks, glue, paper and more.

World Book Day

Lately, our whole school has took part in world book day, we all dressed up in characters from books. Alex dressed up as Willy Wonka from Charlie and the Chocolate Factory. Everyone brought a book in, so after assembly, we left our books in the hall, and each class came in one classroom at a time and chose a book to take home. In assembly, we had a sheet and there was a live stream of CBBC about red nose day while filling the sheet in to plan your own holiday!

Red Nose Day

On Red Nose Day we had a lovely day filled with laughter, crafting so much more. We made clown face biscuits, we made red nose day hats, we threw wet sponges at all the teachers, and the whole school wore red clothes. We all had so much more fun than some of the (very wet) teachers because they were cold, wet and regretting doing it a tiny bit! But, overall, it was such a greatest day ever. Everyone wore great clothes and costumes; everyone was happy and wet!

W.S.HARTLE FAMILY BUTCHER, WEST BURTON

Best Quality Meat, West Burton Lamb,
Homemade Sausages and Burgers,
Free Local Delivery and Freezer Orders
Tel: David on **01969 663302** or visit
www.hartlebutchers.co.uk

TEASDALE ELECTRICAL

Your local electrician serving the dales and the surrounding areas
Askrigg
North Yorkshire
Tel - **07814 184974 (Steve)**
Email - teasdaleelectrical@icloud.com



www.cozyholidaycottages.co.uk



Since 2019, we have been welcoming guests to our beautiful dog friendly holiday cottages in the Yorkshire Dales.

Book your next Yorkshire Dales break with us!

- ♥ Gorgeous cottages
- ♥ Cozy log burners
- ♥ Large enclosed gardens
- ♥ Very dog friendly
- ♥ Hot Tub
- ♥ Remote & village locations



Do you own a holiday home in the Yorkshire Dales?
Cozy Holiday Cottages offers a superb bespoke management service - why not let us manage it for you?

07917 462300

info@cozyholidaycottages.co.uk
www.cozyholidaycottages.co.uk



Dales Countryside Museum News

Opening times: Daily **10.00am to 5.00pm**
February to October. Last entry one hour before
closing. Contact: hawes@yorkshiredales.org.uk
or call **01969 666210**.

Good to know:

- We're family friendly - children visit free – we have SEND backpacks and lots of activities for children round the whole site.
- We have a buggy store and we are a Breast Feeding friendly site.
- We're an accessible site with a Changing Places facility and assistance dogs are welcome.
- We have a dog owners shared ticket.
- You can get a £1 discount on our admission fee for one person with a DCM/YDNPA car parking ticket.
- We have electric car charging points in the car park.
- We have free WiFi.
- Our ticket includes entry to the Research room where you can access Ancestry if you're looking into your family history and receive research support from our volunteer team on Mondays and Wednesdays.
- Yorkshire Dales Young Archaeologists' Club and the Young Creatives Club are based here.
- We're supported by our volunteer team and the charitable organisation, Friends of the DCM. If you'd like to get involved, please get in touch.
- Our café is temporarily closed so look out for Dave and his Coffee Truck if you need a snack and a drink. We have picnic benches in our garden and along the outdoor trail.

Exhibition: **February 1st to May 31:**

Middle of Somewhere :

Take the chance to see this thought-provoking exhibition. Joanne Coates is a working-class visual artist who lives and works in the Yorkshire Dales. She uses photography to question the concepts of power, identity, wealth,

and poverty. In the creation of this exhibition, Joanne collaborated with participants to explore parallels between people and places. She has delved into questions around climate change, the cost-of-living crisis, disparities of wealth and the impact on low-income communities which can be the realities of rural life.

Young Creatives:

Our Young Creatives group have been exploring the use of sound for interpretation that can be shared both indoors and out. Ideas for their exhibition pieces are being developed and the group have been exploring the collections of the different venues in the network. Going Places is an Art Fund programme made possible with major support from The National Lottery Heritage Fund, The Julia Rausing Trust, with additional support from a generous group of trusts, foundations and individuals. If you're aged 18-30 and are interested in getting involved, just get in touch - we'd love to hear from you!

We're also looking to meet with groups of young people so that their voices can be shared through the project. If you're in a group or lead a group and would be interested in having a chat, please just get in touch.

Daughters of the Dales:

We are continuing our research into women in the Dales for our Daughters of the Dales exhibition. People are kindly sending in suggestions, so if you have stories to share of women in your family, from your village, or any other sources of information, please do get in touch at dcm@yorkshiredales.org.uk.

Yorkshire Dales Young Archaeologists' Club:

In April we worked with Rob Stokes and members had a go at flint knapping! Please email dcm@yorkshiredales.org.uk if your child is aged between eight and 16 and they're interested in joining us for a trial session.

Learning:

Our loan boxes can be booked for a half term to enrich learning in your school or as part of a free led session. Give us a call to chat through your needs. Check this website to see supporting material to help you make the most of our **Home - Out Of The Box Learning**.

Home Educators

If you're interested in bringing your children to explore the museum and our collections, please get in touch.

DCM events coming up in May. Events are included in the Museum admission unless otherwise stated. Bookings can be made online and via hawes@yorkshiredales.org.uk. For the full listing please see www.dalescountrysidemuseum.org.uk.

FDCM talk - Quaker mining pioneers in the Yorkshire Dales by Pip Pointon

Friday, May 15th, 7.30pm– 9.00pm.

Donations welcome from non-members.

Rag Rug Demo

Saturday, May 23rd, 11.00am– 4.00pm.

A demonstration of Rag Rugging using the two techniques of hooking and prodding using traditional tools and fabrics. Have a go at using an old peg to prod a rug, also a small display of rugs and related items will be on display.

Drystone Walling Demonstration

Tuesday, May 26th, 11.00am– 3.00pm.

Join Dales Volunteers as they showcase the traditional craft of drystone walling. They will explain the construction of this iconic feature of the National Park landscape. Demonstrations will run throughout the day.

Family Activity - Spring Tote Bags

Wednesday, May 27th, 1.00pm– 4.00pm.

Carry Spring around with you, by making a seasonally inspired tote bag.

Hands on History - Iron Age Roundhouses

Thursday, May 28th, 1.00pm– 4.00pm.

Family activity where you can explore Iron age round houses and make your own.

Forest Skills

Friday, May 29th, 2.00pm– 4.30pm.

Join us for a Gruffalo's Child themed activity session during May half-term. Try your hand at whittling and learn new knife skills, build a shelter, and use flint and steel to start a fire. Take part in story time and listen to facts and folklore based on the fauna and flora from the

story. Make a clay model, play in the sand activity tray, or have a go at bead threading, with an optional survival bracelet for older children.

All this is finished off with campfire snacks of popcorn, marshmallows, and damper bread, washed down with campfire hot drinks, such as hot chocolate. We look forward to seeing you all there! Please note children must be accompanied by an adult.

£5 - Booking essential.

Stir the Air: creative writing for all ages

Saturday, May 30th, 2.00pm – 3.30pm.

Writer Beth Daley leads an all-age creative-writing workshop inspired by music, images and the changing world around us. With playful props, prompts and gentle guidance, you'll create your own poems inspired by the seasons. For all ages and all levels of experience.

Adult £10, Under 25's £3 - Booking essential.

Flora and Fauna

Tuesday, June 2nd, 11.30am– 3:00pm.

Join Dales Volunteers for a four mile walk from the Museum exploring plants, waterfalls and possibly red squirrels.

£6 - No dogs allowed.

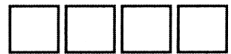
Recipes and Remedies from the museum archives

Tuesday, June 9th, 11.30am– 12.30pm.

Join Jane for a pop-up session in the museum to talk about some weird and wonderful recipes from our archives.

PENNINE

PRINT



Full Colour Print

Invites - Tickets

Brochures - Leaflets

Menus

all at affordable Prices

simon@pennineprint.co.uk

Tel: 07860 620 411

Index to Advertisers

	Page		Page
Accountancy, Yorkshire Dales	33	Massage, Mobile Therapist	15
Advertising Rates and Contacts	40	Middle House, Askrigg	18
Alcoholics Anonymous	29	Music Tuition, Colin Bailey	33
Aysgarth Falls Hotel	23		
Boiler Service – Efficient Heat	33	Optician - Mike Addison	10
Boiler and Aga Service, M.F.W.	17	Orthopaedic Massage, Reflex	23
Bowen Technique	7	Pet and House Sitting, Home Run	32
Builder and Plasterer, M. Moore and Son	22	Plumbing and Heating, Parfitt J	17
Builder, Dinsdale John and Ted	17	PAT Testing	33
Builders, Moore and Blackhurst	28	Piano Tuner	27
Building Contractor, Andrew Hawkins	6	Post Office,	
Building Services, Fothergill M	33	Hawes, Bainbridge and Askrigg	29
Butchers, Cockett, Hawes	26	Print Services, Pennine Print	37
Butchers, Hartle, West Burton	35	Print Services, Wensleydale Press	19
Candles – White Rose, Wensley	26	Scrap Car and Commercials Collection	13
Chapel Gallery	30	Sewing Needs; Kearton	14
Chimney Sweep, Dales Sweep	32	Solicitors, Scotts, Hall and Birtles	10
Coach Travel and Holidays – Bibby's	13	Solicitors, McGarry	11
Coal Merchant, Peacock	19	Slimming World	15
Cozy Holiday Cottages	35	Sycamore Country Store	29
Craniosacral Therapist	38	Sykes House, Askrigg	30
Cumbria Stove Centre	19		
Dales Garage	12	Tailoring - Applegarth Couture	13
Decorating Supplies. Sanderson & Co	25	Taxi, Peacock, Bainbridge	19
Dental Lab, Orchard	32	Tea Room, Hamilton's, Aysgarth	13
Dog Grooming, The Dog Shed	11	Tea Room–The Moorcock	25
		Timber Buildings, Castle	32
Edgley Garage, Aysgarth	25	Travel Specialists – Sturdy Travel	11
Electricians - Teasdale	35	TV Aerial & Satellite Services. J.Banks	27
Estate Agent, Jessop Robin	30		
		Vets Bainbridge	25
Financial Advisor, Kathy Fawcett	18	Vets, Wensleydale	23
Financial Services, Walter Dawson & Son	14		
Fish Market, Hawes	14	Wensleydale Craft Fairs	23
Flooring - NH	15	Wensleydale Creamery, Hawes	16
Florist – Feather and Fern	10	Wensleydale Tree Services, D. Allen	29
Fuel Available, Dale Head Garage	6	Withywood Stores, West Witton	15
Funeral Directors, Sanderson and Co.	4	Woodcraft Studio & Timber Services	15
Furniture, Handcrafted, Tom Addison	33	Woodwork and Decorating. S. Peacock	17
		Woodwork and Decorating. Steve Ward	24
H&M Craftsmen, Ingleton	22		
Hairdressing, Edie Peacock	25	Yogafusion	19
Handy in Hawes	26	Yorkshire Foot Clinic	11
Healing Collective, Swinithwaite	22		
Hearing Tests and Aids	12		
Home care, Upper Dales	19		
Ironing Service –Tracy Hume	16		
KTL Joinery	18		
Logs, Springbank Logs, Hawes	17		
Logs, Seasoned Hardwood	13		

Craniosacral Therapist

Craniosacral Therapy and SCENAR (Self Controlling Energy-Neuro-Adapting Regulator) reflexotherapy now available in Hawes or at your home.

Finding your way to new health.

Call/text **07850 421925** for appointment/
voucher



Yorebridge Sport and Leisure Centre

The Wensleydale Centre, Askrigg,
Tel **01969 650060**

On-demand Classes:

As well as having two Zoom classes a week (**9.00am Mondays and Wednesdays**) we are now building a catalogue of on-demand classes on our Membership platform, ClubRight. These can be accessed by Premier Plus Members or by purchasing a pay-as-you-go class voucher. Another step forwards to help make exercise accessible to all, no matter how busy your week looks!

A welcoming space for locals and visitors:

We pride ourselves on being welcoming and accessible for our local community and for visitors to the area. We saw a big increase in holiday makers during the Easter Holidays, taking advantage of our pay-as-you-go vouchers. These vouchers, and all our Memberships, are available through our ClubRight system, linked from our website: www.yorebridgesportandleisure.co.uk/.

Yorebridge Sport and Leisure is open **6.00am - 10.00pm**, seven days a week including Bank Holidays.

Tennis has got underway this spring! Our adult tennis club meets on a Monday evening. Individual and family tennis memberships are available on our ClubRight system, and did you know that our gym members get free access to the MUGA!

Courts are available for anyone to book through the LTA Clubspark www.clubspark.lta.org.uk/YorebridgeTennisClub. We have tennis and other sports equipment available to borrow for free and there are customer toilets available.

Class Timetable:

Pay as you go and class membership option available.

High Intensity Bootcamp - Monday and **Thursday** (live) **6.00am - 7.00am** - get that morning metabolism boost.

Fit for Life - **Mondays** (live and on Zoom) **9.15am - 10.15am**. Building and maintaining strength to live life your way. Weights, resistance bands and equipment available to borrow in the gym.

Warm and Well – **Mondays** (live) **11.00am – noon**. Enjoy a social, active class building core strength. Standing and chair-based exercise.

Adult Tennis Club – **Mondays** (live) **5.00pm – 7.00pm**. Social tennis, weather permitting. Get in touch with the tennis club to join the group yorebridgetennis@gmail.com.

Circuits – **Wednesdays** (live and on Zoom) **9.00am - 10.00am**. Exercises to keep active people, active. Work at your level through a mix of cardio and strengthening exercises. Weights, resistance bands and equipment available to borrow in the gym.

Yogafusion – **Thursdays** (live) **9.00am – 10.00am** with Janesse. To book please email yogafusionbyj@gmail.com.

Strong and Able – **Fridays** (live) **11.00am – noon**. Maintain your ability to get out and enjoy life, build muscle tone, stability around movement and keep flexible and mobile around joints. Standing and chair-based exercise.

Walking Football **Fridays** (live) **6.00pm – 7.00pm** Get in touch with the tennis club to join the group yorebridgetennis@gmail.com.

Little White Bus Excursions

The Little White bus which provides scheduled bus services in both Wensleydale and Swaledale is putting on some excursions further afield this year. Join your friendly community bus for a fun day trip out. Trips are going to:

Day trip to Northallerton on **Saturday, May 9th and Saturday, June 13th**.

Ticket price: £10 per person. Picking up from: Appersett, Hardraw, Hawes, Gayle, Burtersett, Countersett, Bainbridge, Bainbridge (Sycamore House), Leyburn and Leyburn (Kirkwood Hall).

Day trip to Thorpe Farm and Barnard Castle on **Thursday, May 28th** (school holidays).

Ticket price: £15 per person / child (you'll have 90 minutes at each venue). Picking up from: Redmire, Askrigg, Bainbridge, Hawes (Dales Countryside Museum), Hardraw, Thwaite and Keld.

For more information or to book, please see www.littlewhitebus.co.uk/day-trips/ or phone **01969 667400** or drop into the Hawes Library and Community Office.



LEYBURN ARTS AND COMMUNITY CENTRE



Friday 1 May 6pm
Chinatown (1974) (15) 2hrs 10m

Friday 8 May 6pm
Kangeroo (PG) 1hr 47m

Friday 15 May 6pm
The House of Mirth (2000) (12) 2hrs 15m

Friday 22 May 6pm
Song Sung Blue (12A) 2hrs 12m

Friday 29 May 6pm
Hamnet (12A) 2hrs 05m

Coming Soon

- H is for Hawk
- Nuremberg
- The President's Cake

Thursday 7 May 7pm £12/£6
Cinema Live: James Acaster: Cinemagoers Welcome

Friday 8 and Saturday 9 May
Leyburn Arts and Community Centre is hosting its annual Plant Fayre

Saturday 9 May 7.30pm £15/£7.50
Live Music with the 684s

Thursday 21 May 7pm £12/£6
Exhibition on Screen: Frida Kahlo

Coming Soon

- Tuesday 2 June – NTL: The Playboy of the Western World
- Saturday 6 June – Twice Nightly: The Glory Days of Variety
- Saturday 20 June – Evening with Jason Isaacs
- Thursday 25 June – NTL: Les Liaisons Dangereuses

- You can book and pay online via our website.
- Our licensed cafe/bar opens 30 minutes before all events and screenings.
- For a full list of what's on, head to our website or give us a call.



The Old School House,
Richmond Rd,
Leyburn DL8 5DL



www.leyburnartscentre.com



01969 624510

Advertising

**Boxed adverts: £6, £12, £18
(dependent on size)**

There is a big reduction for six issues or more, so for six issues the totals are:
£25, £50 or £75

Greetings etc. £2

What's ons (non-commercial) are free

Contact for adverts:

Barry Cruickshanks

01969 667458

uwnlinput@gmail.com

Whilst we try to ensure that all information is correct we cannot be held legally responsible for omissions or inaccuracies in articles, adverts or listings, or for any inconvenience caused. Views expressed in articles are the sole responsibility of the person by-lined. Articles by committee members carry just their initials.

We appreciate being asked before any part of the Newsletter is reproduced.

Published by

The Upper Wensleydale Newsletter
Lilac House, The Holme, Hawes, DL8 3QR
01969 667458

Email for submission of articles, what's ons, letters etc.: **uwnlinput@gmail.com**

Newsletters on line, simply search on "Upper Wensleydale Newsletter"
Archive hard copies back to 1995 are in the Dales Countryside Museum resources room.

Editors: Barry Cruickshanks,
Kevin Davis,

Committee: Malcolm Carruthers, Roy Chapman,
Tony Hutchinson, Alyson Jones, Karen Jones
(Treasurer), Alastair McLachlan
Neil Piper, Karen Prudden,

**Founded in 1995
by the late Alan S. Watkinson**